



**HALEX**

BEYOND THE CURRENT

## Electrical Distributors



**PRODUCT CATALOG**

MARCH 2025

BEYOND THE CURRENT

# CONTRACTOR CLEAR PACKS®

BRAND NEW CCP DESIGN



## PATENTED INNOVATION TO DRIVE SALES!

Introducing a new innovative way to merchandise and sell our most popular products in higher quantities. Our new Contractor Clear Packs (CCPs) are more durable, easier to stack, and come with theft resistant closures. They protect the product and your profits! The new CCP design is heading to stores in 2023.

- EASY TO STOCK
- EASY TO ORGANIZE
- EASY TO SELL

Available throughout these select categories!

EMT

FLEX

NM

RGD

ACC



# HALEX®

BEYOND THE CURRENT

Customer Service Contact:  
1-800-749-3261 • [CS@halexco.com](mailto:CS@halexco.com)

101 Production Drive • Harrison, OH 45030  
1-800-749-3261 • [halexco.com](http://halexco.com)

# TABLE OF CONTENTS

Catalog Parts Numbering System .....	2	Clamp Connectors - Two-Piece .....	41	<b>SERVICE ENTRANCE FITTINGS</b>	
Best Sellers .....	5	Clamp Connectors - Combination .....	41	One Hole Ground Strap .....	76
<b>UNIVERSAL STRAPS</b>		Saddle Connectors .....	41	One-Hole Straps (SE & SEU Cable) .....	76
One and Two Hole Straps .....	8	Duplex Connectors .....	42	Two-Hole Straps (SE & SEU Cable) .....	76
<b>ELECTRICAL METALLIC TUBING FITTINGS</b>		Water-Tight UF Connectors .....	42	Water-Tight Connectors .....	76
Set-Screw Connectors .....	10-11	EMT-To-Non-Metallic Combination Couplings .....	42	Service Entrance Caps - Clamp Type .....	77
Set-Screw Couplings .....	12	One-Hole Straps .....	42	Oval Service Entrance Caps .....	78
Compression Connectors .....	13-14	<b>LIQUID-TIGHT CONDUIT FITTINGS</b>		Oval Service Entrance Cable Hoods .....	78
EMT To LQD Compression Couplings .....	14	Straight Liquid Tight Connectors - One-Piece .....	44	Slip-Fit Mast Heads .....	78
Compression Couplings .....	15	Straight Liquid Tight Connectors - Multi-Piece .....	44	PVC Service Entrance Caps .....	78
EMT To RGD Compression Couplings .....	15	90° Liquid Tight Connectors - One-Piece .....	45	Conduit Sill Plates .....	79
Rain Tight Compression Connectors .....	16	90° Liquid Tight Connectors - Multi-Piece .....	45	Clamp Connectors - Service Entrance .....	79
Rain Tight Compression Couplings .....	17	Straight Liquid Tight Connectors .....	46	Kenny Clamps .....	79
Flex-To-EMT Couplings .....	17	45° Liquid Tight Connectors .....	46	Offset Bottom Reducers .....	80
EMT Insulation Bushings .....	18	90° Liquid Tight Connectors .....	47	Conduit Supports (Lag Screw) .....	80
EMT-To-Rigid Combination Couplings .....	18	Straight Quick-Set Liquid Tight Connectors .....	47	Conduit Supports (Bolt Nut Washer) .....	80
EMT-To-Non-Metallic Combination Couplings .....	18	90° Quick-Set Liquid Tight Connectors .....	48	Service Drop Brackets .....	80
EMT-To-Box Offset Connectors -		LQD EMT Couplings .....	48	Fork Bolts .....	80
Set-Screw Type .....	19	LQD RGD Couplings .....	48	Adjustable Porcelain Wireholder .....	81
EMT-To-Box Offset Connectors -		Screw-In Couplings .....	48	Porcelain Wireholders .....	81
Compression Type .....	19	<b>RIGID CONDUIT FITTINGS</b>		Roof Flashings .....	81
EMT-To-EMT Pull Elbows .....	19	Set-Screw Connectors .....	50	Electric Pane Washers .....	81
EMT RGD 90° Pull Elbow .....	19	Set-Screw Couplings .....	50-51	Long Service Entrance ELL .....	82
EMT-To-Box Pull Elbows .....	20	Compression Connectors .....	51	Wedge Clamp Connectors .....	82
EMT / Rigid-To-EMT / Rigid		Compression Couplings .....	52	<b>ACCESSORIES</b>	
Combination Elbows .....	20	Rigid-To-EMT Couplings .....	52	Cable Staples For SEU and Range Cable .....	84
EMT / Rigid-To-Box Combination Elbows .....	20	Rigid Three-Piece Couplings .....	52	Plastic Insulating Staples .....	84
EMT-To-EMT Inside-Corner Pull Elbows .....	20	Aluminum Couplings .....	53	Strain Relief Cord Connector .....	84
90° Compression Elbows - Short Radius .....	21	90° Short Radius Elbows .....	53	Non-Metallic Strain Relief Cord Connector .....	84
90° Compression Elbows - Large Radius .....	21	Rigid Couplings .....	53	Knockout Seals .....	85
90° Compression Connector .....	21	Rigid To Rigid Pull Elbows .....	54	3 Piece Knockout Seals .....	85
90° Set-Screw Elbows - Large Radius .....	21	EMT/Rigid-To-EMT/Rigid Combo Elbows .....	54	Switch Box Supports .....	85
90° Elbows .....	22	Pull Elbow Couplings .....	54	Snap In Bushings .....	85
45° Elbows .....	22	EMT/Rigid-To-Box Combo Elbow .....	54	Universal Snap In Bushings .....	86
Speed Thread One Hole Strap .....	23	90° Large Radius Elbows .....	54	Nail Plates .....	86
One-Hole Straps .....	23	Rigid-To-Box Pull Elbows .....	55	Jack Chain .....	86
EMT RGD Clampbacks .....	23	45° Rigid Elbows .....	55	"S" Hook .....	86
Two-Hole Straps .....	24	90° Short Radius Elbows .....	55	"Sky Tie" Cable Clamps .....	86
EMT RGD Strut Clamps .....	24	90° Rigid Elbows .....	55	Extension Springs .....	87
Drive Straps .....	24	90° Elbows - Aluminum .....	56	Duct Seal .....	87
EMT / Rigid Combo Conduit Bodies .....	25-30	Offset Nipples .....	56	Fixture Hangers .....	87
Conduit Body Cover .....	30	Chase Nipples .....	56	Conduit Hangers .....	87
<b>FLEXIBLE METALLIC CONDUIT FITTINGS</b>		Conduit Nipples .....	57-59	SPEED THREAD Conduit Hanger .....	87
Screw-In Connectors .....	32	Water-Tight Conduit Hubs .....	60	Beam Clamps .....	88
Screw-In Couplings .....	32	Water-Tight Conduit Hubs With Bonding Screw .....	60	<b>GROUNDING AND BONDING FITTINGS</b>	
Set-Screw Connectors .....	33	Box Spacers .....	60	Ground Clamps (Bare Wire) .....	90
Saddle Connectors .....	33	Conduit Bushings .....	61	Ground Clamps (Bare Wire) - For Direct Burial .....	91
Squeeze Connectors .....	34	Plastic Bushings .....	61	Ground Clamps (Armored Cable) .....	92
AC (BX) Connectors .....	34	Reducing Washers .....	62	Ground Rod Clamps .....	92
Clamp Connectors .....	35	Conduit Locknuts .....	62-63	Ground Screws .....	92
Duplex Connectors .....	35	Sealing Conduit Locknuts .....	63	Ground Wires .....	92
90° Duplex Connectors .....	35	Grounding Locknuts .....	63-64	Ground Clips .....	93
Flex-To-EMT Couplings .....	36	Insulated Metallic Grounding Bushing .....	64	Split Bolt Connectors .....	93
MC Snap-In Connectors .....	36	Clamp Backs .....	64	Split Bolt Connectors (With Spacer Bar) .....	93
MC Snap-In Duplex Connector .....	36	Reducing Bushings .....	65	Solderless Terminal Lugs .....	93
Cut-In Snap Lock Connector .....	37	One-Hole Strap Malleable Iron .....	65	<b>DISCONNECT</b>	
MC-AC-Flex Double Snap Connector .....	37	Clamp Back And One Hole Strap .....	65	Fused ACD .....	96
Double Snap In Lock 90° BX Connector .....	37	Speed Thread One Hole Strap .....	66	Non-Fused AC Disconnects .....	96
AC / MC One-Hole Strap .....	37	One-Hole Straps .....	66	Non-Metallic ACD .....	96
BX Strap .....	37	Two-Hole Straps .....	67	AC Whips .....	96
90° Connectors .....	38	Rigid / EMT Combo Conduit Bodies .....	67-69		
Anti-Short Bushings .....	38	Mogul Pulling Elbows - Type LB .....	70		
<b>NON-METALLIC SHEATHED CABLE FITTINGS</b>		Threaded Conduit Bodies - No Cover .....	71-72		
Push-In Cable Connectors .....	40	Threaded Conduit Bodies -			
Plastic Cable Connectors .....	40	With Stamped Cover .....	72-74		
Clamp Connectors .....	40	Service Entrance ELL .....	74		
Clamp Connectors - Service Entrance .....	40	Conduit Body Covers .....	74		
Clamp Connectors - Snap-In .....	41	Conduit Body Gaskets .....	74		

\*There are four CCPs/ Carton\*

\*Halex uses UL ratings\*

# INTRODUCTION: PARTS NUMBERING SYSTEM

Halex uses a part numbering system that allows users to quickly distinguish three key pieces of information: **Material Type, Trade Size, and Pack Format**. The first digit of our part number defines material type. The last two numerals define the trade size. Finally, if there is a B at the end of a part number it identifies it as a bulk or high-count item. Below is a key and an example so you can familiarize yourself with the numbering system:

# 12105B

1 = Zinc    05 = 1/2"    B = BULK

First Digit	Material Type
0, 1	Zinc
3	Brass, Bronze, Copper, Malleable Iron
5	Zinc Die Cast or Stamped Aluminum
7	Plastic
8, 9	Zinc with Insulated Throat or Gasket

Last Digits	Trade Size
03	3/8"
05	1/2"
07	3/4"
10	1"
12	1 1/4"
15	1 1/2"
20	2"
25	2 1/2"
30	3"
35	3 1/2"
40	4"

At Halex, our packaging system is meticulously crafted to ensure the highest quality and convenience for our customers and end users. Below, you'll find an overview of our packaging and how it is presented in our catalog.

- **PCS/PKG Column:** Indicates the number of individual pieces in one sellable pack.
- **TOTAL CTN QTY Column:** Indicates the number of sellable packs in one carton.

A sellable unit can be an individually labeled piece, or multiple pieces inside a bag, box, or Contractor Clear Pack. A carton contains multiple sellable units grouped together. Please see the example below for further clarification.

## Example: ONE-HOLE STRAPS

	SIZE	PART #	PCS / PKG	TOTAL CTN QTY	CTN WT
UPC	3/4"	<b>96112</b>	4 / BAG	10 BAGS	2.54
	1 1/4"	<b>96114</b>	1	10	1.12

In this scenario, part number **96114** is an *individually labeled* piece and sold separately, and there are **10 pieces in the carton**. In comparison, part number **96112** is a *bagged item* that has **4 pieces per package and a total of 40 pieces in the carton** (4 pieces per bag x 10 bags = 40 total pieces).

# Corrosion Resistant Air Conditioner Disconnects

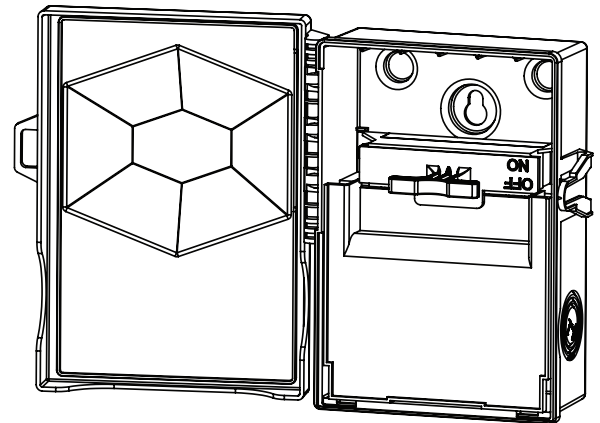
## ABOUT THE NMHNF60R

The 60 AMP Non Metallic Non-Fusible ACD is the latest in a line of innovative products from Halex. This ACD is made with the electrical and HVAC professionals in mind. The patent pending knock out seals are easier to take out so installers remove the right size faster and with less effort. In addition this product uses a proprietary material to extend the products life in costal applications. Easy to stock. Easy to sell. Easy to install. Halex is proud to take these products Beyond the Current.

## PRODUCT BENEFITS

- **Designed for costal applications:** Innovative corrosion resistant material. PPE-PS (polyphenylene-polystyrene) resist the effects of coastal salt air better than anything on the market
- **NEMA 3R rating**
- **Concentric Knock Outs:** Knock out the correct size with less effort and more accuracy
- **Built in security:** The disconnect has a durable padlock feature for securing the box after installation
- **Easier installation:** Durable 180° swing hinge makes working within the disconnect box easier
- **Simplify mounting:** Requires just 2 points for safe secure mounting to walls

## 60 AMP Non-Fusible



## NMHNF60R

SIZE	PART #	PCS / PKG	TOTAL CTN QTY	CTN WT
60 AMP	<b>NMHNF60R</b>	Single Box	1	0.75
60 AMP	<b>NMHNF60R10</b>	MasterPack	10	7.50

# Speed Thread One Hole Conduit Straps

## PRODUCT BENEFITS

Speed Thread conduit straps come pre-threaded with a captive screw. They are easier to install, reducing installation time by up to 30%. Never lose a screw again because these screws are captive and will not fall out during installation. Simplify your job, and your parts list, by having both the screw and strap all in one.



## NEW CONTRACTOR CLEAR PACKS



### RGD

	SIZE	PART #	PCS / PKG	TOTAL CTN QTY	CTN WT
CCP	1/2"	61705B	40 / CCP	4 CCP's	7.4
	3/4"	61707B	20 / CCP	4 CCP's	5.3

### EMT

	SIZE	PART #	PCS / PKG	TOTAL CTN QTY	CTN WT
CCP	1/2"	61305B	50 / CCP	4 CCP's	6.3
	3/4"	61307B	40 / CCP	4 CCP's	7.8

# BEST SELLERS

## EMT SET SCREW CONNECTORS

12101B Page 10



## FLEX CLAMP-COMBINATION CONNECTORS

05711B Page 35



## FLEX AC/MC ONE HOLE STRAPS

62180B Page 37



## NM PUSH-IN CONNECTORS

75105B Page 40



## NM CLAMP CONNECTORS

05103B Page 40

05107B Page 40

05103B Page 40



# BEST SELLERS



**RGD THREADED CONDUIT BODY  
WITH COVER AND GASKET TYPE LB**

**58607B Page 70**



**ACC NAIL PLATES**

**05711B Page 84**



**ACD 60 AMP NON-FUSED AC DISCONNECT**

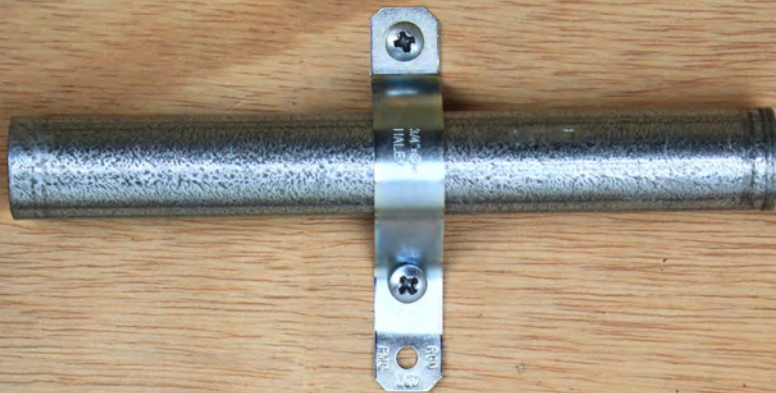
**HNF60R Page 94**





HALEX®

BEYOND THE CURRENT



• *One and Two Hole Straps.... 8*

## UNIVERSAL ONE AND TWO HOLE STRAPS

1.800.749.3261  
halexco.com

# UNIVERSAL ONE AND TWO HOLE STRAPS

UNV

## UNIVERSAL ONE-HOLE STRAPS

Steel

- **APPLICATION:** Use to support EMT, RGD, FMC, or LQD conduit. Indoors or outdoors.
- **FEATURES:**
  - 1/2" Fits - EMT, RGD, FMC, LQD
  - 3/4" Fits - EMT, RGD, FMC, LQD



Contact us for Canadian regulatory listings



	SIZE	PART #	PCS / PKG	TOTAL CTN QTY	CTN WT
CCP	1/2"	62105B	75 / CCP	4 CCP's	8.4
	3/4"	62107B	50 / CCP	4 CCP's	9.6

## UNIVERSAL TWO-HOLE STRAPS

Steel

- **APPLICATION:** Use to support EMT, RGD, FMC, or LQD conduit. Indoors or outdoors.
- **FEATURES:**
  - 1/2" Fits - EMT, RGD, FMC, LQD
  - 3/4" Fits - EMT, RGD, FMC, LQD



Contact us for Canadian regulatory listings



	SIZE	PART #	PCS / PKG	TOTAL CTN QTY	CTN WT
CCP	1/2"	62205B	80 / CCP	4 CCP's	7.0
	3/4"	62207B	80 / CCP	4 CCP's	8.4



HALEX®

BEYOND THE CURRENT

halexco.com



- *Set-Screw Connectors..... 10-11*
- *Set-Screw Couplings..... 12*
- *Compression Connectors/ Couplings..... 15*
- *Combination Couplings..... 18*
- *Offset Connectors .... 19*
- *Elbows..... 21-22*
- *Straps..... 23-24*
- *Conduit Bodies ..... 30*

## **ELECTRICAL METALLIC TUBING FITTINGS**

## SET-SCREW CONNECTORS

Zinc Die Cast

- **APPLICATION:** Used to connect EMT conduit to steel outlet box, load center, or other metal enclosure. Indoors only. Not rated for burial.
- **FEATURES:**
  - 1/2" and 3/4" Concrete tight
  - 1"- 4" Concrete tight when taped



Contact us for Canadian regulatory listings



	SIZE	PART #	PCS / PKG	TOTAL CTN QTY	CTN WT
CCP	1/2"	<b>12101B</b>	50 / CCP	4 CCP's	32.71
	3/4"	<b>12301B</b>	25 / CCP	4 CCP's	28.21
	3/4"	<b>12111B</b>	20 / CCP	4 CCP's	28.76
BULK	1"	<b>12110B</b>	20 / BOX	10 BOXES	31.25
	1 1/4"	<b>12112B</b>	25 / BOX	4 BOXES	26.29
	1 1/2"	<b>12115B</b>	15 / BOX	4 BOXES	22.51
	2"	<b>12120B</b>	10 / BOX	4 BOXES	21.57
	2 1/2"	<b>12125B</b>	12 / BOX	1 BOX	9.82
	3"	<b>12130B</b>	12 / BOX	1 BOX	12.73
	3 1/2"	<b>12135B</b>	10 / BOX	1 BOX	12.29
	4"	<b>12140B</b>	6 / BOX	1 BOX	9.24

### WITH INSULATED THROAT



BULK	1/2"	<b>92105B</b>	50 / BOX	10 BOXES	31.55
	3/4"	<b>92107B</b>	25 / BOX	1 BOX	
	1"	<b>92110B</b>	20 / BOX	10 BOXES	23.31
	1 1/4"	<b>92112B</b>	25 / BOX	1 BOX	
	1 1/2"	<b>92115B</b>	15 / BOX	4 BOXES	16.95
	2"	<b>92120B</b>	10 / BOX		
	2 1/2"	<b>92125B</b>	12 / BOX		
	3"	<b>92130B</b>	12 / BOX	1 BOX	
	3 1/2"	<b>92135B</b>	10 / BOX	1 BOX	12.35
		4"	<b>92140B</b>	6 / BOX	1 BOX

## SET-SCREW CONNECTORS

Steel

- **APPLICATION:** Used to connect EMT conduit to steel outlet box, load center, or other metal enclosure. Indoors only.
- **FEATURES:** Concrete tight when taped



Contact us for Canadian regulatory listings

	SIZE	PART #	PCS / PKG	TOTAL CTN QTY	CTN WT
CCP	1/2"	<b>62705B</b>	50 / CCP	4 CCP's	48.98
	3/4"	<b>62707B</b>	25 / CCP	4 CCP's	28.52
	1"	<b>62711B</b>	20 / CCP	4 CCP's	37.56
BULK	1"	<b>62710B</b>	20 / BOX	10 BOXES	45.41
	1"	<b>62770B</b>	15 / BOX	1 BOX	
	1 1/4"	<b>62712B</b>	25 / BOX	1 BOX	9.12
	1 1/2"	<b>62715B</b>	25 / BOX	1 BOX	6.32
	2"	<b>62720B</b>	20 / BOX	1 BOX	12.70
	2 1/2"	<b>62725B</b>	12 / BOX	1 BOX	15.22
	3"	<b>62730B</b>	6 / BOX	1 BOX	10.64
	3 1/2"	<b>62735B</b>	12 / BOX	1 BOX	
	4"	<b>62740B</b>	6 / BOX	1 BOX	15.19



### WITH INSULATED THROAT

	SIZE	PART #	PCS / PKG	TOTAL CTN QTY	CTN WT
CCP	1/2"	<b>82705B</b>	50 / CCP	4 CCP's	51.66
	3/4"	<b>82707B</b>	25 / CCP	4 CCP's	39.66
BULK	1"	<b>82710B</b>	20 / BOX	10 BOXES	45.41
	1 1/4"	<b>82712B</b>	25 / BOX	1 BOX	9.09
	1 1/2"	<b>82715B</b>	25 / BOX	1 BOX	11.52
	2"	<b>82720B</b>	20 / BOX	1 BOX	
	2 1/2"	<b>82725B</b>	12 / BOX	1 BOX	
	3"	<b>82730B</b>	12 / BOX	1 BOX	
	3 1/2"	<b>82735B</b>	6 / BOX	1 BOX	
		4"	<b>82740B</b>	6 / BOX	1 BOX



## SET-SCREW COUPLINGS

Zinc Die Cast

- APPLICATION:** Used to join two lengths of EMT conduit together. Use one coupling for every 10" of pipe Indoors only.
- FEATURES:**
  - 1/2" and 3/4" Concrete tight
  - 1" - 4" Concrete tight when taped



Contact us for Canadian regulatory listings



	SIZE	PART #	PCS / PKG	TOTAL CTN QTY	CTN WT
CCP	1/2"	12201B	50 / CCP	4 CCP's	34.81
	3/4"	12401B	25 / CCP	4 CCP's	26.91
	1"	12211B	15 / CCP	4 CCP's	22.36
BULK	1"	12210B	20 / BOX	10 BOXES	29.65
	1 1/4"	12212B	25 / BOX	4 BOXES	30.14
	1 1/2"	12215B	15 / BOX	4 BOXES	23.95
	2"	12220B	5 / BOX	4 BOXES	12.92
	2 1/2"	12225B	12 / BOX	1 BOX	10.28
	3"	12230B	12 / BOX	1 BOX	13.10
	3 1/2"	12235B	10 / BOX	1 BOX	
	4"	12240B	6 / BOX	1 BOX	10.43

## SET-SCREW COUPLINGS

Steel

- APPLICATION:** Used to join two lengths of EMT conduit together. Indoors only.
- FEATURES:** Concrete tight when taped



Contact us for Canadian regulatory listings



	SIZE	PART #	PCS / PKG	TOTAL CTN QTY	CTN WT
CCP	1/2"	62805B	50 / CCP	4 CCP's	43.10
	3/4"	62807B	25 / CCP	4 CCP's	36.66
	1"	62809B	10 / CCP	4 CCP's	19.96
BULK	1"	62810B	10 / BOX	10 BOXES	27.20
	1"	62811B	10 / BOX	10 BOXES	27.20
	1 1/4"	62812B	25 / BOX	1 BOX	11.02
	1 1/2"	62815B	25 / BOX	1 BOX	14.14
	2"	62820B	20 / BOX	1 BOX	13.78
	2 1/2"	62825B	12 / BOX	1 BOX	20.74
	3"	62830B	12 / BOX	1 BOX	21.93
	3 1/2"	62835B	6 / BOX	1 BOX	13.64
	4"	62840B	6 / BOX	1 BOX	

## COMPRESSION CONNECTORS

*Zinc Die Cast*

- **APPLICATION:** Used to connect EMT conduit to steel outlet box, load center, or other metal enclosure. Indoors only.
- **FEATURES:** Concrete tight



Contact us for Canadian regulatory listings

	SIZE	PART #	PCS / PKG	TOTAL CTN QTY	CTN WT
CCP	1/2"	<b>02101B</b>	50 / CCP	4 CCP's	46.56
	3/4"	<b>02301B</b>	25 / CCP	4 CCP's	34.31
	1"	<b>02111B</b>	15 / CCP	4 CCP's	45.76
BULK	1"	<b>02110B</b>	20 / BOX	10 BOXES	45.45
	1 1/4"	<b>02112B</b>	25 / BOX	4 BOXES	36.66
	1 1/2"	<b>02115B</b>	15 / BOX	4 BOXES	34.36
	2"	<b>02120B</b>	10 / BOX	4 BOXES	32.03
	2 1/2"	<b>02125B</b>	12 / BOX	1 BOX	13.84
	3"	<b>02130B</b>	12 / BOX	1 BOX	16.86
	3 1/2"	<b>02135B</b>	10 / BOX	1 BOX	17.63
	4"	<b>02140B</b>	6 / BOX	1 BOX	12.49



### WITH INSULATED THROAT

BULK	1/2"	<b>82105B</b>	25 / BOX	4 BOXES	36.66
	3/4"	<b>82107B</b>	25 / BOX	1 BOX	
	1"	<b>82110B</b>	20 / BOX	1 BOX	
	1 1/4"	<b>82112B</b>	25 / BOX	1 BOX	
	1 1/2"	<b>82115B</b>	15 / BOX	1 BOX	
	2"	<b>82120B</b>	10 / BOX	1 BOX	
	2 1/2"	<b>82125B</b>	12 / BOX	1 BOX	
	3"	<b>82130B</b>	12 / BOX	1 BOX	
	3 1/2"	<b>82135B</b>	10 / BOX	1 BOX	
	4"	<b>82140B</b>	6 / BOX	1 BOX	



### 2-PIECE DESIGN

BULK	3/4"	<b>02007B</b>	25 / BOX	1 BOX	2.37
------	------	---------------	----------	-------	------



## COMPRESSION CONNECTORS

Steel

- **APPLICATION:** Used to connect EMT conduit to steel outlet box, load center, or other metal enclosure. Indoors only.
- **FEATURES:** Concrete tight



Contact us for Canadian regulatory listings



	SIZE	PART #	PCS / PKG	TOTAL CTN QTY	CTN WT
CCP	1/2"	<b>62305B</b>	25 / CCP	4 CCP's	33.68
	3/4"	<b>62307B</b>	25 / CCP	4 CCP's	51.76
	1"	<b>62311B</b>	10 / CCP	4 CCP's	27.86
BULK	1"	<b>62310B</b>	10 / BOX	10 BOXES	21.45
	1 1/4"	<b>62312B</b>	25 / BOX	1 BOX	5.34
	1 1/2"	<b>62315B</b>	20 / BOX	1 BOX	11.25
	2"	<b>62320B</b>	15 / BOX	1 BOX	11.44
	2 1/2"	<b>62325B</b>	12 / BOX	1 BOX	21.96
	3"	<b>62330B</b>	12 / BOX	1 BOX	
	3 1/2"	<b>62335B</b>	6 / BOX	1 BOX	
	4"	<b>62340B</b>	6 / BOX	1 BOX	

### WITH INSULATED THROAT



	SIZE	PART #	PCS / PKG	TOTAL CTN QTY	CTN WT
CCP	1/2"	<b>82305B</b>	25 / CCP	4 CCP's	28.42
	3/4"	<b>82307B</b>	25 / CCP	4 CCP's	51.76
BULK	1"	<b>82310B</b>	10 / BOX	10 BOXES	21.45
	1 1/4"	<b>82312B</b>	25 / BOX	1 BOX	5.34
	1 1/2"	<b>82315B</b>	20 / BOX	1 BOX	11.25
	2"	<b>82320B</b>	15 / BOX	1 BOX	11.44
	2 1/2"	<b>82325B</b>	12 / BOX	1 BOX	22.52
	3"	<b>82330B</b>	12 / BOX	1 BOX	23.04
	3 1/2"	<b>82335B</b>	6 / BOX	1 BOX	
	4"	<b>82340B</b>	6 / BOX	1 BOX	

## EMT TO LQD COMPRESSION COUPLINGS

Steel

- **APPLICATION:** Used to join EMT and LQD conduit together. Indoors only.
- **FEATURES:** Concrete tight



Contact us for Canadian regulatory listings



	SIZE	PART #	PCS / PKG	TOTAL CTN QTY	CTN WT
BULK	1/2"	<b>64905B</b>	25 / BOX	1 BOX	
	3/4"	<b>64907B</b>	20 / BOX	1 BOX	
	1"	<b>64910B</b>	10 / BOX	1 BOX	



## COMPRESSION COUPLINGS

*Zinc Die Cast*

- **APPLICATION:** Used to join two lengths of EMT conduit together. Indoors only.
- **FEATURES:** Concrete tight



Contact us for Canadian regulatory listings

	SIZE	PART #	PCS / PKG	TOTAL CTN QTY	CTN WT
CCP	1/2"	<b>22205B</b>	45 / CCP	4 CCP's	55.78
	3/4"	<b>02401B</b>	25 / CCP	4 CCP's	46.19
	1"	<b>02211B</b>	12 / CCP	4 CCP's	36.40
BULK	1"	<b>02210B</b>	20 / BOX	10 BOXES	54.15
	1 1/4"	<b>02212B</b>	25 / BOX	4 BOXES	46.08
	1 1/2"	<b>02215B</b>	15 / BOX	4 BOXES	42.14
	2"	<b>02220B</b>	10 / BOX	4 BOXES	36.07
	2 1/2"	<b>02225B</b>	12 / BOX	1 BOX	15.95
	3"	<b>02230B</b>	12 / BOX	1 BOX	21.11
	3 1/2"	<b>02235B</b>	10 / BOX	1 BOX	
	4"	<b>02240B</b>	6 / BOX	1 BOX	15.12



## EMT TO RGD COMPRESSION COUPLINGS

*Zinc Die Cast*

- **APPLICATION:** Used to join EMT and RGD conduit together. Indoors only.
- **FEATURES:** Concrete tight



Contact us for Canadian regulatory listings

	SIZE	PART #	PCS / PKG	TOTAL CTN QTY	CTN WT
BULK	1/2"	<b>65005B</b>	20 / BOX	1 BOX	
	3/4"	<b>65007B</b>	10 / BOX	1 BOX	
	1"	<b>65010B</b>	10 / BOX	1 BOX	



## COMPRESSION COUPLINGS

*Steel*

- **APPLICATION:** Used to join two lengths of EMT conduit together. Indoors only.
- **FEATURES:** Concrete tight



Contact us for Canadian regulatory listings

	SIZE	PART #	PCS / PKG	TOTAL CTN QTY	CTN WT
CCP	1/2"	<b>62401B</b>	35 / CCP	4 CCP's	55.91
	3/4"	<b>62402B</b>	20 / CCP	4 CCP's	41.71
	1"	<b>62411B</b>	10 / CCP	4 CCP's	31.16
BULK	1"	<b>62410B</b>	10 / BOX	10 BOXES	33.60
	1 1/4"	<b>62412B</b>	25 / BOX	1 BOX	12.28
	1 1/2"	<b>62415B</b>	20 / BOX	1 BOX	11.75
	2"	<b>62420B</b>	15 / BOX	1 BOX	11.41
	2 1/2"	<b>62425B</b>	12 / BOX	1 BOX	31.22
	3"	<b>62430B</b>	6 / BOX	1 BOX	16.59
	3 1/2"	<b>62435B</b>	6 / BOX	1 BOX	
	4"	<b>62440B</b>	6 / BOX	1 BOX	28.91



### RAIN TIGHT COMPRESSION CONNECTORS

Steel

- **APPLICATION:** Used to connect EMT conduit to steel outlet box, load center, or other metal enclosure in a wet location. Outdoors.



Contact us for Canadian regulatory listings



	SIZE	PART #	PCS / PKG	TOTAL CTN QTY	CTN WT
CCP	1/2"	<b>62501B</b>	45 / CCP	4 CCP's	44.56
	3/4"	<b>62502B</b>	25 / CCP	4 CCP's	35.44
	1"	<b>62570B</b>	10 CCP	4 CCP's	39.91
BULK	1/2"	<b>62505B</b>	50 / BOX	1 BOX	6.43
	3/4"	<b>62507B</b>	25 / BOX	1 BOX	4.14
	1"	<b>62510B</b>	15 / BOX	1 BOX	4.06
	1"	<b>62503B</b>	15 / BOX	1 BOX	
	1 1/4"	<b>62512B</b>	20 / BOX	1 BOX	8.58
	1 1/2"	<b>62515B</b>	10 / BOX	1 BOX	4.95
	2"	<b>62520B</b>	10 / BOX	1 BOX	6.52
	2 1/2"	<b>62525B</b>	6 / BOX	1 BOX	11.74
	3"	<b>62530B</b>	6 / BOX	1 BOX	11.87
	3 1/2"	<b>62535B</b>	6 / BOX	1 BOX	
4"	<b>62540B</b>	6 / BOX	1 BOX	16.04	

#### WITH INSULATED THROAT



BULK	1/2"	<b>92505B</b>	50 / BOX	1 BOX	6.43
	3/4"	<b>92507B</b>	25 / BOX	1 BOX	4.28
	1"	<b>92510B</b>	15 / BOX	1 BOX	4.06
	1 1/4"	<b>92512B</b>	20 / BOX	1 BOX	4.95
	1 1/2"	<b>92515B</b>	10 / BOX	1 BOX	
	2"	<b>92520B</b>	10 / BOX	1 BOX	
	2 1/2"	<b>92525B</b>	6 / BOX	1 BOX	
	3"	<b>92530B</b>	6 / BOX	1 BOX	
	3 1/2"	<b>92535B</b>	6 / BOX	1 BOX	
	4"	<b>92540B</b>	6 / BOX	1 BOX	

## RAIN TIGHT COMPRESSION COUPLINGS

Steel

- **APPLICATION:** Used to connect two lengths of EMT conduit together in a wet location. Outdoors.



Contact us for Canadian regulatory listings

	SIZE	PART #	PCS / PKG	TOTAL CTN QTY	CTN WT
CCP	1/2"	<b>62601B</b>	35 / CCP	4 CCP's	59.55
	3/4"	<b>62602B</b>	20 / CCP	4 CCP's	36.56
	1"	<b>62603B</b>	10 / CCP	4 CCP's	33.16
BULK	1"	<b>62610B</b>	15 / BOX	1 BOX	4.91
	1 1/4"	<b>62612B</b>	20 / BOX	1 BOX	9.30
	1 1/2"	<b>62615B</b>	10 / BOX	1 BOX	5.54
	2"	<b>62620B</b>	10 / BOX	1 BOX	7.29
	2 1/2"	<b>62625B</b>	6 / BOX	1 BOX	12.21
	3"	<b>62630B</b>	6 / BOX	1 BOX	14.84
	4"	<b>62640B</b>	6 / BOX	1 BOX	21.88



## FLEX-TO-EMT COUPLINGS

Zinc Die Cast

- **APPLICATION:** Used to join EMT conduit to flexible metal conduit. Indoors only.
- **SUITABLE FOR:**
  - 1/2" steel, steel reduced wall and aluminum flexible metal conduit to EMT
  - 3/4" - 1" flexible metal conduit to EMT



Contact us for Canadian regulatory listings

	SIZE	PART #	PCS / PKG	TOTAL CTN QTY	CTN WT
<i>SET-SCREW TYPE</i>					
BULK	1/2" - 3/8"	<b>15105B</b>	25 / BOX	1 BOX	
	1/2" - 1/2"	<b>15305B</b>	25 / BOX	10 BOXES	21.75
	3/4" - 3/4"	<b>15307B</b>	25 / BOX	10 BOXES	27.51
<i>COMPRESSION TO SCREW-IN TYPE</i>					
BULK	1/2"	<b>04905B</b>	50 / BOX	10 BOXES	41.95
	3/4"	<b>04907B</b>	25 / BOX	10 BOXES	28.95
	1"	<b>04910B</b>	25 / BOX	1 BOX	
<i>CLAMP TYPE</i>					
BULK	1/2"	<b>90605B</b>	25 / BOX	1 BOX	
	3/4"	<b>90607B</b>	100 / BOX	1 BOX	
	1"	<b>90610B</b>	50 / BOX	1 BOX	



## EMT INSULATION BUSHINGS

PVC

- **APPLICATION:** Used to protect cables from abrasion from edge of EMT. Installed directly onto conduit. Indoors only.



	SIZE	PART #	PCS / PKG	TOTAL CTN QTY	CTN WT
BULK	1/2"	<b>75005B</b>	100 / BOX	10 BOXES	5.63
	3/4"	<b>75007B</b>	75 / BOX	10 BOXES	5.13
	1"	<b>75010B</b>	50 / BOX	10 BOXES	4.15
	1 1/4"	<b>75012B</b>	25 / BOX	10 BOXES	3.20
	1 1/2"	<b>75015B</b>	25 / BOX	10 BOXES	3.20
	2"	<b>75020B</b>	25 / BOX	10 BOXES	3.46
	2 1/2"	<b>27625B</b>	25 / BOX	1 BOX	
	3"	<b>27630B</b>	25 / BOX	1 BOX	
	4"	<b>27640B</b>	25 / BOX	1 BOX	

## EMT-TO-RIGID COMBINATION COUPLINGS

Steel

- **APPLICATION:** Used to join EMT conduit to Rigid metal conduit. Indoors only.



Contact us for Canadian regulatory listings



	SIZE	PART #	PCS / PKG	TOTAL CTN QTY	CTN WT
BULK	1/2" - 1/2"	<b>15304B</b>	25 / BOX	1 BOX	3.96
	3/4" - 3/4"	<b>15306B</b>	25 / BOX	1 BOX	5.06
	1"	<b>17310B</b>	10 / BOX	1 BOX	

## EMT-TO-NON-METALLIC COMBINATION COUPLINGS

Zinc Die Cast

- **APPLICATION:** Used to join EMT conduit to non-metallic sheathed cable, fits 12/2 or equivalent size and should be limited to one cable per coupling for optimal performance. Indoors only.



Contact us for Canadian regulatory listings



	SIZE	PART #	PCS / PKG	TOTAL CTN QTY	CTN WT
CCP	1/2" - NM	<b>15301B</b>	25 / CCP	4 CCP's	17.58
BULK	1/2" - NM	<b>15303B</b>	50 / BOX	10 BOXES	32.25

## EMT-TO-BOX OFFSET CONNECTORS

Zinc Die Cast

- **APPLICATION:** Used to connect EMT conduit to a metal outlet box or enclosure where an offset is desired. Indoors only.



Contact us for Canadian regulatory listings

### SET-SCREW TYPE

	SIZE	PART #	PCS / PKG	TOTAL CTN QTY	CTN WT
BULK	1/2"	<b>03705B</b>	10 / BOX	10 BOXES	12.27
	3/4"	<b>03707B</b>	10 / BOX	10 BOXES	17.85



## EMT-TO-BOX OFFSET CONNECTORS

Zinc Die Cast

- **APPLICATION:** Used to connect EMT conduit to a metal outlet box or enclosure where an offset is desired. Indoors only. Not rated for wet locations.



Contact us for Canadian regulatory listings

### COMPRESSION TYPE

	SIZE	PART #	PCS / PKG	TOTAL CTN QTY	CTN WT
BULK	1/2"	<b>13905B</b>	10 / BAG	1 BOX	
	1/2"	<b>03905B</b>	20 / BOX	1 BOX	
	3/4"	<b>03907B</b>	10 / BOX	1 BOX	



## EMT-TO-EMT PULL ELBOWS

Zinc Die Cast

- **APPLICATION:** Used to connect EMT conduit together at a 90° bend. Dry location.

Contact us for Canadian regulatory listings



### WITHOUT GASKET

	SIZE	PART #	PCS / PKG	TOTAL CTN QTY	CTN WT
UPC	1/2"	<b>14405</b>	1	15	2.29
	3/4"	<b>14407</b>	1	10	3.11

### WITH NEOPRENE GASKET

	SIZE	PART #	PCS / PKG	TOTAL CTN QTY	CTN WT
UPC	1/2"	<b>94405</b>	1	10	2.10
	3/4"	<b>94407</b>	1	5	1.72
	1"	<b>94410</b>	1	5	3.36



## EMT / RGD 90° PULL ELBOW

Zinc Die Cast

- **APPLICATION:** Used to connect EMT conduit and RGD conduit together at a 90° bend. Dry location.

Contact us for Canadian regulatory listings



	SIZE	PART #	PCS / PKG	TOTAL CTN QTY	CTN WT
UPC	1"	<b>94710B</b>	25	1 BOX	
	1 1/4"	<b>94712B</b>	20	1 BOX	





### EMT-TO-BOX PULL ELBOWS

Zinc Die Cast

- **APPLICATION:** Used to connect EMT conduit to a metal box or enclosure to form a 90° bend.

Contact us for Canadian regulatory listings 


	SIZE	PART #	PCS / PKG	TOTAL CTN QTY	CTN WT
<b>WITHOUT NEOPRENE GASKET</b>					
<b>BULK</b>	1/2"	<b>14305B</b>	1 / BOX	1 BOX	
	3/4"	<b>14307B</b>	1 / BOX	1 BOX	



### EMT / RIGID COMBINATION ELBOWS

Zinc Die Cast

- **APPLICATION:** Use as a wire pulling elbow to facilitate wire pulling through a sharp bend in a run of threaded Rigid or IMC conduit. Rain tight when used with Rigid conduit. Indoors or outdoors.

Contact us for Canadian regulatory listings 


	SIZE	PART #	PCS / PKG	TOTAL CTN QTY	CTN WT
<b>BULK</b>	1/2"	<b>94505B</b>	10 / BOX	1 BOX	
	3/4"	<b>94507B</b>	5 / BOX	1 BOX	
	1"	<b>94510B</b>	25 / BOX	1 BOX	
	1 1/4"	<b>94512B</b>	20 / BOX	1 BOX	



### EMT / RIGID-TO BOX COMBINATION ELBOWS

Zinc Die Cast

- **APPLICATION:** Used to connect a run of threaded rigid or IMC conduit to an outlet box or other metal enclosure. Suitable for outdoor locations when protected by overhead cover. Indoors or outdoors.

Contact us for Canadian regulatory listings 

	SIZE	PART #	PCS / PKG	TOTAL CTN QTY	CTN WT
<b>BULK</b>	1/2"	<b>94705B</b>	10 / BOX	1 BOX	
	3/4"	<b>94707B</b>	5 / BOX	1 BOX	
	1"	<b>94710B</b>	25 / BOX	1 BOX	
	1 1/4"	<b>94712B</b>	20 / BOX64	1 BOX	

### EMT-TO-EMT INSIDE CORNER ELBOW

Zinc Die Cast

- **APPLICATION:** Used to connect EMT conduit together on a 90° Inside corner. Indoors only



Contact us for Canadian regulatory listings




	SIZE	PART #	PCS / PKG	TOTAL CTN QTY	CTN WT
<b>BULK</b>	1/2"	<b>14605B</b>	10 / BOX	1 BOX	
	3/4"	<b>14607B</b>	5 / BOX	1 BOX	

## 90° COMPRESSION ELBOWS - SHORT RADIUS

Zinc Die Cast

- **APPLICATION:** Used to connect EMT conduit to steel outlet box or enclosure where a close radius is desired. Indoors or outdoors.

Contact us for Canadian regulatory listings 

	SIZE	PART #	PCS / PKG	TOTAL CTN QTY	CTN WT
BULK	1/2"	<b>02905B</b>	25 / BOX	10 BOXES	50.88
	3/4"	<b>02907B</b>	20 / BOX	10 BOXES	55.21



## 90° COMPRESSION ELBOWS - LARGE RADIUS

Zinc Die Cast

- **APPLICATION:** Used to connect EMT conduit to a steel outlet box or enclosure where a close radius is desired. Indoors or outdoors.

Contact us for Canadian regulatory listings 

	SIZE	PART #	PCS / PKG	TOTAL CTN QTY	CTN WT
BULK	1/2"	<b>02805B</b>	20 / BOX	10 BOXES	29.77
	3/4"	<b>02807B</b>	10 / BOX	10 BOXES	22.19



## 90° COMPRESSION CONNECTOR

Zinc Die Cast

- **APPLICATION:** Used to connect EMT conduit to a steel outlet box or enclosure where a close radius is desired. Indoors only.

Contact us for Canadian regulatory listings 

	SIZE	PART #	PCS / PKG	TOTAL CTN QTY	CTN WT
UPC	1"	<b>11810B</b>	10 / BOX	1 BOX	



## 90° SET-SCREW ELBOWS - LARGE RADIUS

Zinc Die Cast

- **APPLICATION:** Used to connect EMT conduit to a steel outlet box or enclosure where a large radius is desired. Indoors only.

Contact us for Canadian regulatory listings 

	SIZE	PART #	PCS / PKG	TOTAL CTN QTY	CTN WT
BULK	1/2"	<b>02705B</b>	20 / BOX	10 BOXES	24.43
	3/4"	<b>02707B</b>	10 / BOX	10 BOXES	19.59



### 90° ELBOWS

- **APPLICATION:** Used to connect EMT conduit together to allow for 90° bends. Indoors or outdoors.

Steel



Contact us for Canadian regulatory listings



	SIZE	PART #	PCS / PKG	TOTAL CTN QTY	CTN WT
BULK	1/2"	<b>64405B</b>	50 / BOX	1 BOX	14.09
	3/4"	<b>64407B</b>	50 / BOX	1 BOX	25.91
	1"	<b>64410B</b>	25 / BOX	1 BOX	13.41
	1 1/4"	<b>64412B</b>	20 / BOX	1 BOX	15.55
	1 1/2"	<b>64415B</b>	15 / BOX	1 BOX	31.26
	2"	<b>64420B</b>	10 / BOX	1 BOX	33.67
	2 1/2"	<b>64425B</b>	1 / BOX	1 BOX	
	3"	<b>64430B</b>	1 / BOX	1 BOX	
	3 1/2"	<b>64435B</b>	1 / BOX	1 BOX	
	4"	<b>64440B</b>	1 / BOX	1 BOX	

### 45° ELBOWS

- **APPLICATION:** Used to connect EMT conduit together to allow for 45° bends. Indoors or outdoors.

Steel



Contact us for Canadian regulatory listings



	SIZE	PART #	PCS / PKG	TOTAL CTN QTY	CTN WT
BULK	1/2"	64505B	50 / BOX	1 BOX	
	3/4"	64507B	50 / BOX	1 BOX	
	1"	64510B	35 / BOX	1 BOX	
	1 1/4"	64512B	30 / BOX	1 BOX	
	1 1/2"	64515B	15 / BOX	1 BOX	
	2"	64520B	15 / BOX	1 BOX	
	2 1/2"	64525B	1 / BOX	1 BOX	
	3"	64530B	1 / BOX	1 BOX	
	3 1/2"	64535B	1 / BOX	1 BOX	
	4"	64540B	1 / BOX	1 BOX	



## SPEED THREAD™

### ONE HOLE STRAP SPEED THREAD

Steel

- APPLICATION:** Used to connect two lengths of EMT conduit together in a dry location. Indoors. Captive screw included.



Contact us for Canadian regulatory listings

	SIZE	PART #	PCS / PKG	TOTAL CTN QTY	CTN WT
CCP	1/2"	61305B	50 / CCP	4 CCP's	6.3
	3/4"	61307B	40 / CCP	4 CCP's	7.8



### ONE-HOLE STRAPS

Steel

- APPLICATION:** To support EMT conduit where greater load bearing is required. Both one-hole straps and two-hole straps are rated for the same weight and are pull tested to the same standards. Indoors or outdoors.



Contact us for Canadian regulatory listings

	SIZE	PART #	PCS / PKG	TOTAL CTN QTY	CTN WT
CCP	1/2"	61505B	100 / CCP	4 CCP's	48.28
	3/4"	61507B	100 / CCP	4 CCP's	34.40
	1"	61511B	50 / CCP	4 CCP's	26.08
BULK	1 1/4"	61512B	50 / BOX	10 BOXES	41.81
	1 1/2"	61515B	25 / BOX	10 BOXES	38.91
	2"	61520B	20 / BOX	10 BOXES	47.83
	2 1/2"	61125B	50 / BOX	1 BOX	
	3"	61130B	25 / BOX	1 BOX	
	3 1/2"	61135B*	25 / BOX	1 BOX	20.23
	4"	61140B*	20 / BOX	1 BOX	16.33



\*Both EMT and RGD

### EMT - RGD CLAMPBACKS

Steel

- APPLICATION:** Used to provide spacing between mounting surface and conduit. Indoors or outdoors.



Contact us for Canadian regulatory listings

	SIZE	PART #	PCS / PKG	TOTAL CTN QTY	CTN WT
BULK	1"	33210B	25 / BOX	1 BOX	
	1 1/4"	33212B	10 / BOX	1 BOX	
	1 1/2"	33215B	10 / BOX	1 BOX	
	2"	33220B	5 / BOX	1 BOX	
	2 1/2"	33225B	25 / BOX	1 BOX	
	3"	33230B	10 / BOX	1 BOX	
	3 1/2"	33235B	10 / BOX	1 BOX	
	4"	33240B	10 / BOX	1 BOX	



### TWO-HOLE STRAPS

Steel

- **APPLICATION:** To support EMT conduit where greater load bearing is required. Both one-hole straps and two-hole straps are rated for the same weight and are pull tested to the same standards. Indoors or outdoors.



Contact us for Canadian regulatory listings



	SIZE	PART #	PCS / PKG	TOTAL CTN QTY	CTN WT
CCP	1/2"	<b>61605B</b>	100 / CCP	4 CCP's	19.58
	1"	<b>61610B</b>	50 / CCP	4 CCP's	14.70
BULK	1 1/4"	<b>61612B</b>	25 / BOX	10 BOXES	16.80
	1 1/2"	<b>61615B</b>	25 / BOX	10 BOXES	16.93
	2"	<b>61620B</b>	50 / BOX	4 BOXES	26.39
	2 1/2"	<b>61225B</b>	25 / BOX	1 BOX	4.07
	3"	<b>61230B</b>	25 / BOX	1 BOX	
	3 1/2"	<b>61235B</b>	25 / BOX	1 BOX	7.00
	4"	<b>61240B</b>	20 / BOX	1 BOX	6.60

### EMT / RGD STRUT CLAMPS

Steel

- **APPLICATION:** Used to secure conduit to strut. Indoors and outdoors.



Contact us for Canadian regulatory listings



	SIZE	PART #	PCS / PKG	TOTAL CTN QTY	CTN WT
BULK	1/2"	<b>18705B</b>	100 / BOX	1 BOX	
	3/4"	<b>18707B</b>	100 / BOX	1 BOX	
	1"	<b>18710B</b>	100 / BOX	1 BOX	
	1 1/4"	<b>18712B</b>	100 / BOX	1 BOX	
	1 1/2"	<b>18715B</b>	50 / BOX	1 BOX	
	2"	<b>18720B</b>	50 / BOX	1 BOX	
	2 1/2"	<b>18725B</b>	50 / BOX	1 BOX	
	3"	<b>18730B</b>	25 / BOX	1 BOX	
	3 1/2"	<b>18735B</b>	25 / BOX	1 BOX	
	4"	<b>18740B</b>	25 / BOX	1 BOX	

### DRIVE STRAPS

Steel

- **APPLICATION:** To secure EMT conduit to a wood or masonry surface. Indoors or outdoors.



Contact us for Canadian regulatory listings




	SIZE	PART #	PCS / PKG	TOTAL CTN QTY	CTN WT
CCP	1/2"	<b>61401B</b>	200 / CCP	4 CCP's	74.16
	3/4"	<b>61402B</b>	150 / CCP	4 CCP's	61.96
BULK	1"	<b>61410B</b>	100 / BOX	10 BOXES	21.83

## EMT / RIGID CONDUIT BODIES

Aluminum

WITH COVER AND GASKET ASSEMBLED

- **APPLICATION:** Used to gain access to the interior of a raceway for wire pulling, splicing (with regulatory listings) and maintenance. Suitable for outdoor locations when protected by overhead cover.

Contact us for Canadian regulatory listings 

	SIZE	PART #	PCS / PKG	TOTAL CTN QTY	CTN WT
<b>TYPE: LL WITH GASKET &amp; COVER</b>					
BULK	1/2"	56205B	10 / BOX	1 BOX	
	3/4"	56207B	10 / BOX	1 BOX	
	1"	56210B	5 / BOX	1 BOX	
	1 1/4"	56212B	2 / BOX	1 BOX	
	1 1/2"	56215B	2 / BOX	1 BOX	
	2"	56220B	5 / BOX	1 BOX	



<b>TYPE: C WITH COVER AND GASKET</b>					
BULK	1/2"	56405B	10 / BOX	1 BOX	
	3/4"	56407B	10 / BOX	1 BOX	
	1"	56410B	5 / BOX	1 BOX	
	1 1/4"	56412B	2 / BOX	1 BOX	
	1 1/2"	56415B	2 / BOX	1 BOX	
	2"	56420B	5 / BOX	1 BOX	



<b>TYPE: LB WITH COVER AND GASKET</b>					
BULK	1/2"	57505B	10 / BOX	1 BOX	
	3/4"	57507B	10 / BOX	1 BOX	
	1"	57510B	5 / BOX	1 BOX	
	1 1/4"	57512B	2 / BOX	1 BOX	
	1 1/2"	57515B	2 / BOX	1 BOX	
	2"	57520B	5 / BOX	1 BOX	



<b>TYPE: T WITH COVER AND GASKET</b>					
BULK	1/2"	56805B	10 / BOX	1 BOX	
	3/4"	56807B	10 / BOX	1 BOX	
	1"	56810B	5 / BOX	1 BOX	
	1 1/4"	56812B	2 / BOX	1 BOX	
	1 1/2"	56815B	2 / BOX	1 BOX	
	2"	56820B	5 / BOX	1 BOX	



<b>TYPE: LR WITH COVER AND GASKET</b>					
BULK	1/2"	56505B	10 / BOX	1 BOX	
	3/4"	56507B	10 / BOX	1 BOX	
	1"	56510B	5 / BOX	1 BOX	
	1 1/4"	56512B	2 / BOX	1 BOX	
	1 1/2"	56515B	2 / BOX	1 BOX	
	2"	56520B	5 / BOX	1 BOX	



# ELECTRICAL METALLIC TUBING FITTINGS

EMT



	SIZE	PART #	PCS / PKG	TOTAL CTN QTY	CTN WT
<b>TYPE: X WITH COVER AND GASKET</b>					
<b>BULK</b>	1/2"	<b>55505B</b>	5 / BOX	1 BOX	
	3/4"	<b>55507B</b>	5 / BOX	1 BOX	
	1"	<b>55510B</b>	2 / BOX	1 BOX	
	1 1/4"	<b>55512B</b>	1 / BOX	1 BOX	
	1 1/2"	<b>55515B</b>	1 / BOX	1 BOX	
	2"	<b>55520B</b>	1 / BOX	1 BOX	

## EMT / RIGID CONDUIT BODIES

Aluminum

### WITHOUT COVER AND GASKET ASSEMBLED

- **APPLICATION:** Used to gain access to the interior of a raceway for wire pulling, splicing (with limitations as specified by NEC), and maintenance. Suitable for outdoor locations when protected by overhead cover.



Contact us for Canadian regulatory listings

	SIZE	PART #	PCS / PKG	TOTAL CTN QTY	CTN WT
<b>TYPE LL: WITHOUT COVER AND GASKET</b>					
<b>BULK</b>	1/2"	<b>57305B</b>	10 / BOX	1 BOX	
	3/4"	<b>57307B</b>	10 / BOX	1 BOX	
	1"	<b>57310B</b>	5 / BOX	1 BOX	
	1 1/4"	<b>57312B</b>	2 / BOX	1 BOX	
	1 1/2"	<b>57315B</b>	2 / BOX	1 BOX	
	2"	<b>57320B</b>	5 / BOX	1 BOX	



	SIZE	PART #	PCS / PKG	TOTAL CTN QTY	CTN WT
<b>TYPE: C WITHOUT COVER AND GASKET</b>					
<b>BULK</b>	1/2"	<b>57905B</b>	10 / BOX	1 BOX	
	3/4"	<b>57907B</b>	10 / BOX	1 BOX	
	1"	<b>57910B</b>	5 / BOX	1 BOX	
	1 1/4"	<b>57912B</b>	2 / BOX	1 BOX	
	1 1/2"	<b>57915B</b>	2 / BOX	1 BOX	
	2"	<b>57920B</b>	5 / BOX	1 BOX	



	SIZE	PART #	PCS / PKG	TOTAL CTN QTY	CTN WT
<b>TYPE: LB WITHOUT COVER AND GASKET</b>					
<b>BULK</b>	1/2"	<b>57605B</b>	10 / BOX	1 BOX	
	3/4"	<b>57607B</b>	10 / BOX	1 BOX	
	1"	<b>57610B</b>	5 / BOX	1 BOX	
	1 1/4"	<b>57612B</b>	2 / BOX	1 BOX	
	1 1/2"	<b>57615B</b>	2 / BOX	1 BOX	
	2"	<b>57620B</b>	5 / BOX	1 BOX	




## EMT / RIGID CONDUIT BODIES

Aluminum

WITHOUT COVER AND GASKET ASSEMBLED

- **APPLICATION:** Used to gain access to the interior of a raceway for wire pulling, splicing (with limitations as specified by NEC), and maintenance. Suitable for outdoor locations when protected by overhead cover.

Contact us for Canadian regulatory listings 

	SIZE	PART #	PCS / PKG	TOTAL CTN QTY	CTN WT
<b>TYPE: T WITHOUT COVER AND GASKET</b>					
BULK	1/2"	55805B	10 / BOX	1 BOX	
	3/4"	55807B	10 / BOX	1 BOX	
	1"	55810B	5 / BOX	1 BOX	
	1 1/4"	55812B	2 / BOX	1 BOX	
	1 1/2"	55815B	2 / BOX	1 BOX	
	2"	55820B	5 / BOX	1 BOX	



	SIZE	PART #	PCS / PKG	TOTAL CTN QTY	CTN WT
<b>TYPE: LR WITHOUT GASKET</b>					
BULK	1/2"	57705B	10 / BOX	1 BOX	
	3/4"	57707B	10 / BOX	1 BOX	
	1"	57710B	5 / BOX	1 BOX	
	1 1/4"	57712B	2 / BOX	1 BOX	
	1 1/2"	57715B	2 / BOX	1 BOX	
	2"	57720B	5 / BOX	1 BOX	




## SET SCREW CONDUIT BODIES

Aluminum

WITH COVER AND GASKET ASSEMBLED

- **APPLICATION:** Used to gain access to the interior of a raceway for wire pulling, splicing (with limitations as specified by NEC), and maintenance. Suitable for outdoor locations when protected by overhead cover.

Contact us for Canadian regulatory listings 

	SIZE	PART #	PCS / PKG	TOTAL CTN QTY	CTN WT
<b>TYPE: LL WITH COVER AND GASKET</b>					
BULK	1/2"	57005B	10 / BOX	1 BOX	
	3/4"	57007B	10 / BOX	1 BOX	
	1"	57010B	5 / BOX	1 BOX	
	1 1/4"	57012B	2 / BOX	1 BOX	
	1 1/2"	57015B	2 / BOX	1 BOX	
	2"	57020B	1 / BOX	1 BOX	
	2 1/2"	57025B	1 / BOX	1 BOX	
	3"	57030B	1 / BOX	1 BOX	
	3 1/2"	57035B	1 / BOX	1 BOX	
	4"	57040B	1 / BOX	1 BOX	



# ELECTRICAL METALLIC TUBING FITTINGS

EMT

SET SCREW CONDUIT BODIES ALUMINUM CONTINUED FROM PREVIOUS PAGE

**TYPE: C WITH COVER AND GASKET**



BULK	1/2"	<b>57105B</b>	10 / BOX	1 BOX	
	3/4"	<b>57107B</b>	10 / BOX	1 BOX	
	1"	<b>57110B</b>	5 / BOX	1 BOX	
	1 1/4"	<b>57112B</b>	2 / BOX	1 BOX	
	1 1/2"	<b>57115B</b>	2 / BOX	1 BOX	
	2"	<b>57120B</b>	1 / BOX	1 BOX	
	2 1/2"	<b>57125B</b>	1 / BOX	1 BOX	
	3"	<b>57130B</b>	1 / BOX	1 BOX	
	3 1/2"	<b>57135B</b>	1 / BOX	1 BOX	
	4"	<b>57140B</b>	1 / BOX	1 BOX	

**TYPE: LB WITH COVER AND GASKET**



BULK	1/2"	<b>58705B</b>	10 / BOX	1 BOX	
	3/4"	<b>58707B</b>	10 / BOX	1 BOX	
	1"	<b>58710B</b>	5 / BOX	1 BOX	
	1 1/4"	<b>58712B</b>	2 / BOX	1 BOX	
	1 1/2"	<b>58715B</b>	2 / BOX	1 BOX	
	2"	<b>58720B</b>	1 / BOX	1 BOX	
	2 1/2"	<b>58725B</b>	1 / BOX	1 BOX	
	3"	<b>58730B</b>	1 / BOX	1 BOX	
	3 1/2"	<b>58735B</b>	1 / BOX	1 BOX	
	4"	<b>58740B</b>	1 / BOX	1 BOX	

**TYPE: T WITH GASKET**



BULK	1/2"	<b>56705B</b>	10 / BOX	1 BOX	
	3/4"	<b>56707B</b>	10 / BOX	1 BOX	
	1"	<b>56710B</b>	5 / BOX	1 BOX	
	1 1/4"	<b>56712B</b>	2 / BOX	1 BOX	
	1 1/2"	<b>56715B</b>	2 / BOX	1 BOX	
	2"	<b>56720B</b>	1 / BOX	1 BOX	
	2 1/2"	<b>56725B</b>	1 / BOX	1 BOX	
	3"	<b>56730B</b>	1 / BOX	1 BOX	
	3 1/2"	<b>56735B</b>	1 / BOX	1 BOX	
	4"	<b>56740B</b>	1 / BOX	1 BOX	



SET SCREW CONDUIT BODIES ALUMINUM CONTINUED FROM PREVIOUS PAGE

**TYPE: LR WITH COVER AND GASKET**

BULK	1/2"	<b>58505B</b>	10 / BOX	1 BOX	
	3/4"	<b>58507B</b>	10 / BOX	1 BOX	
	1"	<b>58510B</b>	5 / BOX	1 BOX	
	1 1/4"	<b>58512B</b>	2 / BOX	1 BOX	
	1 1/2"	<b>58515B</b>	2 / BOX	1 BOX	
	2"	<b>58520B</b>	1 / BOX	1 BOX	
	2 1/2"	<b>58525B</b>	1 / BOX	1 BOX	
	3"	<b>56930B</b>	1 / BOX	1 BOX	
	3 1/2"	<b>56935B</b>	1 / BOX	1 BOX	
	4"	<b>56940B</b>	1 / BOX	1 BOX	



## SET SCREW CONDUIT BODIES

**WITHOUT COVER AND GASKET ASSEMBLED**

- **APPLICATION:** Used to gain access to the interior of a raceway for wire pulling, splicing (with limitations as specified by NEC), and maintenance. Suitable for outdoor locations when protected by overhead cover.

Aluminum



Contact us for Canadian regulatory listings

SIZE                      PART #                      PCS / PKG                      TOTAL CTN QTY                      CTN WT

**TYPE: LL WITHOUT COVER AND GASKET**

BULK	1/2"	<b>59305B</b>	10 / BOX	1 BOX	
	3/4"	<b>59307B</b>	10 / BOX	1 BOX	
	1"	<b>59310B</b>	5 / BOX	1 BOX	
	1 1/4"	<b>59312B</b>	2 / BOX	1 BOX	
	1 1/2"	<b>59315B</b>	2 / BOX	1 BOX	
	2"	<b>59320B</b>	1 / BOX	1 BOX	
	2 1/2"	<b>59325B</b>	1 / BOX	1 BOX	
	3"	<b>59330B</b>	1 / BOX	1 BOX	
	3 1/2"	<b>59335B</b>	1 / BOX	1 BOX	
	4"	<b>59340B</b>	1 / BOX	1 BOX	



**TYPE: C WITHOUT COVER AND GASKET**

BULK	1/2"	<b>59005B</b>	10 / BOX	1 BOX	
	3/4"	<b>59007B</b>	10 / BOX	1 BOX	
	1"	<b>59010B</b>	5 / BOX	1 BOX	
	1 1/4"	<b>59012B</b>	2 / BOX	1 BOX	
	1 1/2"	<b>59015B</b>	2 / BOX	1 BOX	
	2"	<b>59020B</b>	1 / BOX	1 BOX	
	2 1/2"	<b>59025B</b>	1 / BOX	1 BOX	
	3"	<b>59030B</b>	1 / BOX	1 BOX	
	3 1/2"	<b>59035B</b>	1 / BOX	1 BOX	
	4"	<b>59040B</b>	1 / BOX	1 BOX	



# ELECTRICAL METALLIC TUBING FITTINGS

EMT

## SET SCREW CONDUIT BODIES ALUMINUM CONTINUED FROM PREVIOUS PAGE

	SIZE	PART #	PCS / PKG	TOTAL CTN QTY	CTN WT
<b>TYPE: LB WITHOUT COVER AND GASKET</b>					
BULK	1/2"	<b>58105B</b>	10 / BOX	1 BOX	
	3/4"	<b>58107B</b>	10 / BOX	1 BOX	
	1"	<b>58110B</b>	5 / BOX	1 BOX	
	1 1/4"	<b>58112B</b>	2 / BOX	1 BOX	
	1 1/2"	<b>58115B</b>	2 / BOX	1 BOX	
	2"	<b>58120B</b>	1 / BOX	1 BOX	
	2 1/2"	<b>58125B</b>	1 / BOX	1 BOX	
	3"	<b>58130B</b>	1 / BOX	1 BOX	
	3 1/2"	<b>58135B</b>	1 / BOX	1 BOX	
	4"	<b>58140B</b>	1 / BOX	1 BOX	



<b>TYPE: T WITHOUT COVER AND GASKET</b>					
BULK	1/2"	<b>57405B</b>	10 / BOX	1 BOX	
	3/4"	<b>57407B</b>	10 / BOX	1 BOX	
	1"	<b>57410B</b>	5 / BOX	1 BOX	
	1 1/4"	<b>57412B</b>	2 / BOX	1 BOX	
	1 1/2"	<b>57415B</b>	2 / BOX	1 BOX	
	2"	<b>57420B</b>	1 / BOX	1 BOX	
	2 1/2"	<b>57425B</b>	1 / BOX	1 BOX	
	3"	<b>57430B</b>	1 / BOX	1 BOX	
	3 1/2"	<b>57435B</b>	1 / BOX	1 BOX	
	4"	<b>57440B</b>	1 / BOX	1 BOX	



<b>TYPE: LR WITHOUT COVER AND GASKET</b>					
BULK	1/2"	<b>57805B</b>	10 / BOX	1 BOX	
	3/4"	<b>57807B</b>	10 / BOX	1 BOX	
	1"	<b>57810B</b>	5 / BOX	1 BOX	
	1 1/4"	<b>57812B</b>	2 / BOX	1 BOX	
	1 1/2"	<b>57815B</b>	2 / BOX	1 BOX	
	2"	<b>57820B</b>	1 / BOX	1 BOX	
	2 1/2"	<b>57825B</b>	1 / BOX	1 BOX	
	3"	<b>57830B</b>	1 / BOX	1 BOX	
	3 1/2"	<b>57835B</b>	1 / BOX	1 BOX	
	4"	<b>57840B</b>	1 / BOX	1 BOX	



## CONDUIT BODY COVER - WITH PLATED SCREWS

- APPLICATION:** Used to replace broken or missing covers on conduit bodies to keep them sealed and secure. Indoor only.

Zinc



Contact us for Canadian regulatory listings

BULK	1/2"	<b>19305B</b>	25 / BOX	1 BOX	
	3/4"	<b>19307B</b>	25 / BOX	1 BOX	
	1"	<b>19310B</b>	25 / BOX	1 BOX	
	1 1/4" - 1 1/2"	<b>19315B</b>	25 / BOX	1 BOX	
	2"	<b>19320B</b>	25 / BOX	1 BOX	
	2 1/2" - 3"	<b>19330B</b>	25 / BOX	1 BOX	
	3 1/2" - 4"	<b>19340B</b>	10 / BOX	1 BOX	



30





**HALEX**

BEYOND THE CURRENT



## FLEXIBLE METALLIC CONDUIT FITTINGS

- *Screw-In Connectors..... 32*
- *Screw-In Couplings..... 32*
- *Set-Screw Connectors..... 33*
- *Saddle Connectors ..... 33*
- *Squeeze Connectors ..... 34*
- *AC (BX) Connectors..... 34*
- *Clamp-Combination Connectors..... 35*
- *Duplex Connectors ..... 35*
- *Flex-to-EMT Combination Couplings..... 36*
- *MC Snap-In Connectors..... 36*
- *MC Snap-In Duplex Connectors..... 36*
- *Cut-In Snap Lock Connector ..... 37*
- *MC-AC-FLEX Double Snap Connector ..... 37*
- *AC / MC One-Hole Strap..... 37*
- *90° Connectors..... 38*
- *Anti-Short Bushings ..... 38*

## SCREW-IN CONNECTORS

Zinc Die Cast

- **APPLICATION:** Used to connect flexible metallic conduit to steel outlet box, load center or other metal enclosure. Indoors only.
- **SUITABLE FOR:**
  - 1/2" - Steel, reduced wall steel and aluminum flexible metal conduit
  - 3/8", 3/4" to 1 1/4" and 2" - Flexible metal conduit
  - 1 1/2" - Steel and reduced wall flexible metal conduit



Contact us for Canadian regulatory listings



	SIZE	PART #	PCS / PKG	TOTAL CTN QTY	CTN WT
CCP	3/8" (1/2" KO)	<b>04403B</b>	50 / CCP	4 CCP's	28.08
	1/2"	<b>04405B</b>	50 / CCP	4 CCP's	28.90
BULK	3/4"	<b>04407B</b>	25 / BOX	10 BOXES	24.81
	1"	<b>04410B</b>	25 / BOX	10 BOXES	41.19
	1 1/4"	<b>04412B</b>	10 / BOX	10 BOXES	28.99
	1 1/2"	<b>04415B</b>	10 / BOX	4 BOXES	15.19
	2"	<b>04420B</b>	10 / BOX	4 BOXES	24.31

WITH INSULATED THROAT



BULK	3/8" (1/2" KO)	<b>84403B</b>	50 / BOX	10 BOXES	27.35
	1/2"	<b>84405B</b>	50 / BOX	10 BOXES	27.25
	3/4"	<b>84407B</b>	25 / BOX	1 BOX	
	1"	<b>84410B</b>	25 / BOX	1 BOX	
	1 1/4"	<b>84412B</b>	10 / BOX	1 BOX	
	1 1/2"	<b>84415B</b>	10 / BOX	1 BOX	
	2"	<b>84420B</b>	10 / BOX	1 BOX	

## SCREW-IN COUPLINGS

Zinc Die Cast

- **APPLICATION:** Used to join two pieces of flexible metallic conduit. Indoors only.
- **SUITABLE FOR:**
  - 1/2" - Steel, reduced wall steel and aluminum flexible metal conduit
  - 3/8", 3/4" to 1 1/4" and 2" - Flexible metal conduit
  - 1 1/2" - Steel and reduced wall flexible metal conduit



Contact us for Canadian regulatory listings



	SIZE	PART #	PCS / PKG	TOTAL CTN QTY	CTN WT
BULK	1/2"	<b>04505B</b>	50 / BOX	10 BOXES	28.45
	3/4"	<b>04507B</b>	25 / BOX	10 BOXES	21.50
	1"	<b>04510B</b>	100 / BOX	1 BOX	
	1 1/4"	<b>04512B</b>	50 / BOX	1 BOX	
	1 1/2"	<b>04515B</b>	25 / BOX	1 BOX	
	2"	<b>04520B</b>	25 / BOX	1 BOX	

## SET-SCREW CONNECTORS

Zinc Die Cast

- APPLICATION:** Used to connect steel or aluminum flexible metallic conduit to a steel outlet box or other metal enclosure. Indoors only.

Contact us for Canadian regulatory listings

	SIZE	PART #	PCS / PKG	TOTAL CTN QTY	CTN WT
BULK	1/2"	<b>04805B</b>	25 / BOX	10 BOXES	26.08
	3/4"	<b>04807B</b>	25 / BOX	10 BOXES	40.01
	3/8"	<b>04803B</b>	100 / BOX	1 BOX	

WITH INSULATED THROAT

BULK	1/2"	<b>84805B</b>	25 / BOX	10 BOXES	27.25
	3/4"	<b>84807B</b>	25 / BOX	10 BOXES	40.01



## SADDLE CONNECTORS

Zinc Die Cast

- APPLICATION:** Used to connect flexible metallic conduit, AC, MC and NM sheathed cable to a steel outlet box or other metal enclosure. Indoors only.
- SUITABLE FOR:**
  - #14-2 to the largest size fittable NM sheathed cable
  - #14-2 with ground steel and aluminum armored cable -.470" diameter,
  - 3/8" steel flexible metal conduit, aluminum cont. corrugated metal clad cable 0.510-0.620" diameter
  - Aluminum smooth sheath metal clad cable 0.410-0.500" diameter
  - Aluminum interlocked metal clad cable 0.462-0.548" diameter
  - Steel interlocked metal clad cable 0.422-0.552" diameter

Contact us for Canadian regulatory listings

	SIZE	PART #	PCS / PKG	TOTAL CTN QTY	CTN WT
CCP	3/8" (1/2" KO)	<b>06703B</b>	50 / CCP	4 CCP's	37.06

WITH INSULATED THROAT

BULK	3/8" (1/2" KO)	<b>86703B</b>	50 / BOX	10 BOXES	37.15
------	----------------	---------------	----------	----------	-------



## SQUEEZE CONNECTORS

Zinc Die Cast

- **APPLICATION:** Used to connect flexible metallic conduit and steel AC cable to a steel outlet box, load center or other metal enclosure. All sizes up to 1" are compatible with AC, MC, and FMC. Sizes 1 1/4" and larger exclusively compatible with FMC. Indoors only.
- **SUITABLE FOR:**
  - 3/8" steel flexible conduit,
  - .561 steel and .538 - .599
  - Aluminum interlocked metal clad cable
  - 1/2" steel flexible metal conduit and #4-2 wire steel armored cable
  - 3/4" steel flexible metal conduit and #6-3 wire steel armored cable
  - 1" steel and reduced wall steel flexible metal conduit and #2-2 wire steel armored cable
  - 1 1/4" - 4" steel flexible metal conduit



Contact us for Canadian regulatory listings



	SIZE	PART #	PCS / PKG	TOTAL CTN QTY	CTN WT
CCP	1/2"	04205B	25 / CCP	4 CCP's	23.60
BULK	3/8" (1/2" KO)	04203B	50 / BOX	10 BOXES	32.86
	3/4"	04207B	25 / BOX	10 BOXES	33.30
	1"	04210B	10 / BOX	10 BOXES	20.54
	1 1/4"	04212B	10 / BOX	10 BOXES	28.63
	1 1/2"	04215B	5 / BOX	10 BOXES	19.47
	2"	04220B	10 / BOX	4 BOXES	20.76
	2 1/2"	04225B	10 / BOX	1 BOX	9.57
	3"	04230B	5 / BOX	1 BOX	7.00
	3 1/2"	04235B	2 / BOX	1 BOX	3.37
	4"	04240B	1 / BOX	1 BOX	2.16

### WITH INSULATED THROAT



BULK	1/2"	84205B	25 / BOX	1 BOX	
	3/4"	84207B	25 / BOX	10 BOXES	28.50
	1"	84210B	10 / BOX	10 BOXES	22.25
	1 1/4"	84212B	10 / BOX	1 BOX	
	1 1/2"	84215B	5 / BOX	10 BOXES	22.25
	2"	84220B	10 / BOX	4 BOXES	20.59

## AC (BX) CONNECTORS

Zinc Die Cast

- **APPLICATION:** Used to connect AC (BX) cable to a steel outlet box or other metal enclosure. Indoors only.
- **SUITABLE FOR:**
  - #14-2 steel armored cable



Contact us for Canadian regulatory listings



	SIZE	PART #	PCS / PKG	TOTAL CTN QTY	CTN WT
CCP	3/8" (1/2" KO)	05803B	100 / CCP	4 CCP's	49.62

## CLAMP CONNECTORS

*Zinc Die Cast*

- **APPLICATION:** In a dry location, use to connect flexible metallic conduit, AC, MC, or NM cable to steel outlet box or other enclosure. Indoors only.
- **SUITABLE FOR:**
  - #14/2 thru #12/3 with ground NM sheathed cable
  - #14-2 wire steel armored cable
  - 3/8" steel flexible metal conduit, aluminum continuous corrugated metal clad cable 0.365"-0.519" diameter
  - Aluminum smooth sheath metal clad cable 0.345" - 0.525" diameter
  - Aluminum interlocked metal clad cable 0.455" - 0.575" diameter
  - Rectangular aluminum continuous corrugated metal clad cable 0.277" x 0.375", steel interlocked metal clad cable 0.435" - 0.547" diameter



Contact us for Canadian regulatory listings

	SIZE	PART #	PCS / PKG	TOTAL CTN QTY	CTN WT
CCP	3/8" (1/2" KO)	<b>05711B</b>	50 / CCP	4 CCP's	26.18
BULK	1/2"	<b>05705B</b>	25 / BOX	1 BOX	
	3/4"	<b>05707B</b>	25 / BOX	1 BOX	
	1"	<b>05710B</b>	2 / BOX	1 BOX	
	1 1/4"	<b>05712B</b>	2 / BOX	1 BOX	
	1 1/2"	<b>05715B</b>	2 / BOX	1 BOX	
	2"	<b>05720B</b>	5 / BOX	1 BOX	



## DUPLEX CONNECTORS

*Zinc Die Cast*

- **APPLICATION:** Used to connect two pieces of flexible metallic conduit, AC, MC, or NM sheathed cable, to a steel outlet box or other metal enclosure when using only one knockout opening. Indoors only.
- **SUITABLE FOR:**
  - #14-2 thru #12-3 wire with ground NM sheathed cable
  - #14-2 wire steel armored cable
  - #14-2 wire with ground aluminum armored cable
  - 3/8" FMC, aluminum smooth sheath metal clad cable 0.410"-0.500" diameter
  - 3/8" FMC, aluminum interlocked metal clad cable 0.460"-0.538" diameter
  - 3/8" FMC, steel interlocked metal clad cable 0.438"-0.560" diameter



Contact us for Canadian regulatory listings

	SIZE	PART #	PCS / PKG	TOTAL CTN QTY	CTN WT
CCP	3/8" (1/2" KO)	<b>15803B</b>	25 / CCP	4 CCP's	30.84



## 90° DUPLEX CONNECTORS

*Zinc Die Cast*

- **APPLICATION:** Used to connect two pieces of flexible metallic conduit, AC, MC, or NM sheathed cable, to a steel outlet box or other metal enclosure when using only one knockout opening at a 90° bend. Indoors only.



Contact us for Canadian regulatory listings

	SIZE	PART #	PCS / PKG	TOTAL CTN QTY	CTN WT
CCP	3/8" (1/2" KO)	<b>91603B</b>	25 / CCP	4 CCP's	30.84



# FLEXIBLE METALLIC CONDUIT FITTINGS

**FLEX**

## FLEX-TO-EMT COUPLINGS

*Zinc Die Cast*

- **APPLICATION:** Used to join EMT conduit to flexible metal conduit. Indoors only.
- **SUITABLE FOR:**
  - 1/2" steel, steel reduced wall and aluminum flexible metal conduit to EMT
  - 3/4" - 1" flexible metal conduit to EMT



Contact us for Canadian regulatory listings



	SIZE	PART #	PCS / PKG	TOTAL CTN QTY	CTN WT
<i>SET-SCREW TYPE</i>					
BULK	1/2" - 3/8"	<b>15105B</b>			
	1/2" - 1/2"	<b>15305B</b>	25 / BOX	10 BOXES	21.75
	3/4" - 3/4"	<b>15307B</b>	25 / BOX	10 BOXES	27.51



	SIZE	PART #	PCS / PKG	TOTAL CTN QTY	CTN WT
<i>COMPRESSION TO SCREW-IN TYPE</i>					
BULK	1/2"	<b>04905B</b>	50 / BOX	10 BOXES	41.95
	3/4"	<b>04907B</b>	25 / BOX	10 BOXES	28.95
	1"	<b>04910B</b>			



	SIZE	PART #	PCS / PKG	TOTAL CTN QTY	CTN WT
<i>CLAMP TYPE</i>					
BULK	1/2"	<b>90605B</b>	25 / BOX	1 BOX	
	3/4"	<b>90607B</b>	100 / BOX	1 BOX	
	1"	<b>90610B</b>	50 / BOX	1 BOX	

## MC SNAP-IN CONNECTORS

*Steel*

- **APPLICATION:** Used to connect aluminum or steel AC, aluminum MC, and steel flexible metal conduit. Indoors only.
- **SUITABLE FOR:**
  - Aluminum and steel armored cable with #14-2 - #10/2 wire, steel flexible metal conduit, .45 diameter aluminum interlocked MC cable.



Contact us for Canadian regulatory listings



	SIZE	PART #	PCS / PKG	TOTAL CTN QTY	CTN WT
BULK	3/8" (1/2" KO)	<b>65705B</b>	50 / BOX	10 BOXES	43.25

## MC SNAP-IN DUPLEX CONNECTORS

*Steel*

- **APPLICATION:** Used to connect aluminum or steel AC and MC cables. Indoors only.
- **SUITABLE FOR:**
  - Aluminum and steel armored cable with #14-2 - #12-4 wire; steel MC cable with #14-2 - #10-2 wire; aluminum MC cable with #14-2 - #12-4 wire.



Contact us for Canadian regulatory listings



	SIZE	PART #	PCS / PKG	TOTAL CTN QTY	CTN WT
BULK	3/8" (1/2" KO)	<b>65805B</b>	25 / BOX	10 BOXES	32.65



## CUT-IN SNAP LOCK CONNECTORS

Steel

- APPLICATION:** Use these connectors provide significant labor savings when connecting metal clad or armored cable in old work electrical box installations. Indoors only

Contact us for Canadian regulatory listings

	SIZE	PART #	PCS / PKG	TOTAL CTN QTY	CTN WT
<b>BULK</b>	3/8" (1/2" KO)	<b>85803NB</b>	25 / BOX	10 BOXES	8.75



## MC-AC-FLEX DOUBLE SNAP CONNECTORS

Zinc Die Cast

- APPLICATION:** Used for installing metal clad or armored cable to steel boxes or enclosures. Indoors only.
- SUITABLE FOR:**
  - AL and steel AC 14-2 to 10-3
  - AL and steel MC / MCI - A / HCF 14-2 to 10-3
  - AL and steel 3/8" FMC / RWFMC

Contact us for Canadian regulatory listings

	SIZE	PART #	PCS / PKG	TOTAL CTN QTY	CTN WT
<b>CCP</b>	3/8" (1/2" KO)	<b>85703NB</b>	50 / CCP	4 CCP's	33.66



## DOUBLE SNAP-IN LOCK 90° BX CONNECTOR

Zinc Die Cast

- APPLICATION:** Use these connectors provide significant labor savings when connecting 90° bend metal clad or armored cable in old work electrical box installations. Indoors only

Contact us for Canadian regulatory listings

	SIZE	PART #	PCS / PKG	TOTAL CTN QTY	CTN WT
<b>BULK</b>	3/4"	<b>11103B</b>	12 / BOX	10 BOXES	
	3/4"	<b>11105B</b>	6 / BOX	10 BOXES	



## AC / MC ONE-HOLE STRAPS

- APPLICATION:** Used to secure AC / MC cable range of .475 to .580 to a wood, masonry or similar surface. 0.196 in hole size. Indoors only.

Steel  
Contact us for Canadian regulatory listings

	SIZE	PART #	PCS / PKG	TOTAL CTN QTY	CTN WT
<b>CCP</b>	3/8"	<b>62180B</b>	200 / CCP	4 CCP's	50.00



## BX STRAP

Zinc Die Cast

- APPLICATION:** Used to secure AC cable to a wall or other surface.

Contact us for Canadian regulatory listings

	SIZE	PART #	PCS / PKG	TOTAL CTN QTY	CTN WT
<b>BULK</b>	1/4"	<b>12502B</b>	100 / BOX	1 BOX	
	1/2"	<b>12505B</b>	100 / BOX	1 BOX	
	9/16"	<b>12506B</b>	100 / BOX	1 BOX	
	14/2" -10/3"	<b>12543B</b>	100 / BOX	1 BOX	



# FLEXIBLE METALLIC CONDUIT FITTINGS

**FLEX**

## 90° CONNECTORS

Zinc Die Cast

- **APPLICATION:** Used to connect flexible metal conduit, aluminum and steel AC and MC cable to a steel outlet box or other metal enclosure. Indoors only.
- **SUITABLE FOR:**
  - 3/8"- 3/4" steel and aluminum armored cable, steel and aluminum interlocked metal clad cable, flexible cord, and flexible metal conduit
  - 1" - 4" flexible metal conduit



Contact us for Canadian regulatory listings



	SIZE	PART #	PCS / PKG	TOTAL CTN QTY	CTN WT
<b>CCP</b>	3/8" (1/2" KO)	<b>11001B</b>	35 / CCP	4 CCP's	33.30
<b>BULK</b>	1/2"	<b>11005B</b>	25 / BOX	10 BOXES	33.75
	3/4"	<b>11007B</b>	10 / BOX	10 BOXES	21.48
	1"	<b>11010B</b>	5 / BOX	10 BOXES	17.25
	1 1/4"	<b>11012B</b>	10 / BOX	4 BOXES	20.01
	1 1/2"	<b>11015B</b>	5 / BOX	1 BOX	5.39
	2"	<b>11020B</b>	5 / BOX	1 BOX	6.07
	2 1/2"	<b>11025B</b>	2 / BOX	1 BOX	6.43
	3"	<b>11030B</b>	1 / BOX	1 BOX	3.66
	3 1/2"	<b>11035B</b>	25 / BOX	1 BOX	
	4"	<b>11040</b>	1 / BOX	1 BOX	7.88

WITH INSULATED THROAT



	3/8" (1/2" KO)	<b>91003B</b>	25 / BOX	10 BOXES	21.75
<b>BULK</b>	1/2"	<b>91005B</b>	25 / BOX	10 BOXES	37.51
	3/4"	<b>91007B</b>	10 / BOX	10 BOXES	22.25
	1"	<b>91010B</b>	5 / BOX	1 BOX	
	1 1/4"	<b>91012B</b>	10 / BOX	1 BOX	
	1 1/2"	<b>91015B</b>	5 / BOX	1 BOX	
	2"	<b>91020B</b>	6 / BOX	1 BOX	

## ANTI-SHORT BUSHINGS

Polyethylene

- **APPLICATION:** Used to protect wire within flexible metallic conduit. Indoors only.
- **SUITABLE FOR:**
  - <sup>1</sup> Fits cable range: 14/2, 14/3, 12/2
  - <sup>2</sup> Fits cable range: 14/2, 12/3, 6/1, 4/1
  - <sup>3</sup> Fits cable range: 12/4, 10/2, 10/3, 2/1



Contact us for Canadian regulatory listings



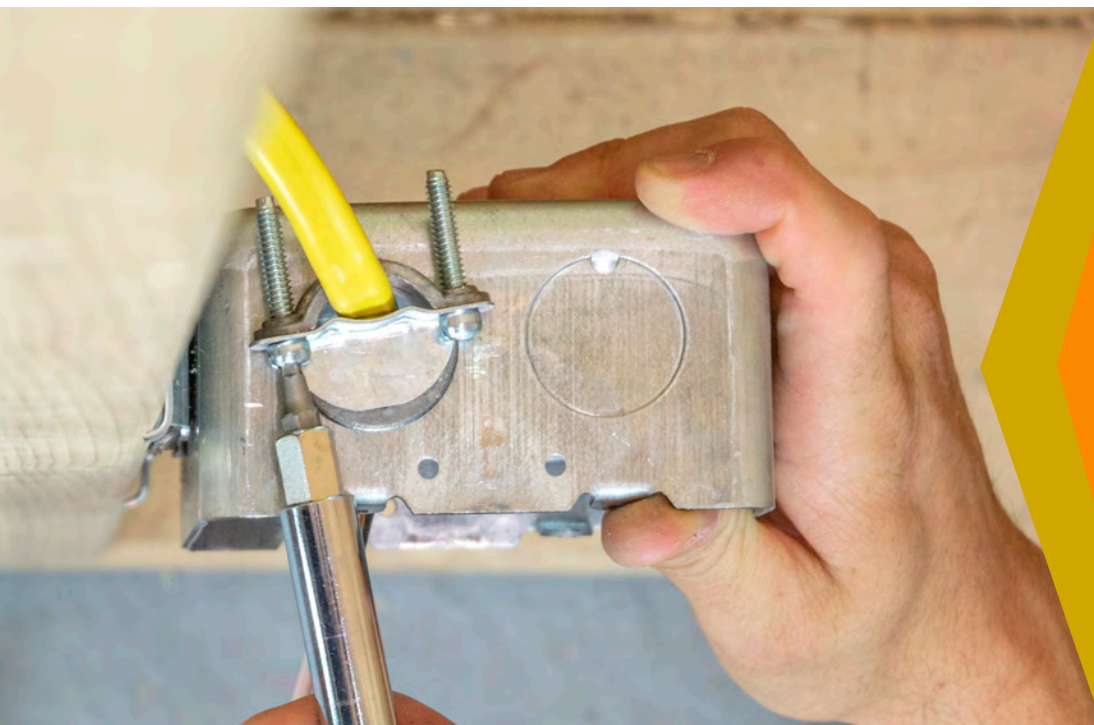
	SIZE	PART #	PCS / PKG	TOTAL CTN QTY	CTN WT
<b>BULK</b>	0 (5/16")	<b>75400BP<sup>1</sup></b>	25 / BOX	1 BOX	0.88
	1 (3/8")	<b>75401BP<sup>2</sup></b>	2 / BOX	1 BOX	2.28
	2 (7/16")	<b>75402BP<sup>3</sup></b>	25 / BOX	1 BOX	1.28
	3 (1/2")	<b>75403BP<sup>3</sup></b>	2 / BOX	1 BOX	1.64
	4 (3/4")	<b>75404BP<sup>3</sup></b>	2 / BOX	1 BOX	1.28
	0 (5/16")	<b>75400B<sup>1</sup></b>	25	1 BOX	
	1 (3/8")	<b>75401B<sup>2</sup></b>	25	1 BOX	
	2 (7/16")	<b>75402B<sup>3</sup></b>	2	1 BOX	
	3 (1/2")	<b>75403B<sup>3</sup></b>	2	1 BOX	
	4 (3/4")	<b>75404B<sup>3</sup></b>	5	1 BOX	





**HALEX®**

BEYOND THE CURRENT



- *Push-In Cable Connectors..... 40*
- *Plastic Cable Connectors..... 40*
- *Clamp Connectors ..... 40*
- *Clamp Connectors Service Entrance ..... 40*
- *Clamp Connectors Snap-In ..... 41*
- *Clamp Connectors Two-Piece ..... 41*
- *Clamp Connectors Combination ..... 41*
- *Saddle Connectors ..... 41*
- *Duplex Connectors ..... 42*
- *Water-Tight UF Connectors ..... 42*
- *EMT-To-Non-Metallic Combination Couplings..... 42*
- *One-Hole Straps ..... 42*

## **NON-METALLIC SHEATHED CABLE FITTINGS**

# NON-METALLIC SHEATHED CABLE FITTINGS

NM

## PUSH-IN CABLE CONNECTORS

Nylon



- APPLICATION:** Used to connect non-metallic sheathed cable to a steel outlet box or other metal enclosure. Snap-in design for quick, easy two-step installation and no locknuts required. Dry location. Only one non-metallic cable should go through.



Contact us for Canadian regulatory listings

	SIZE	PART #	PCS / PKG	TOTAL CTN QTY	CTN WT
CCP	3/8" (1/2" KO)	75105B	100 / CCP	4 CCP's	8.08

## PLASTIC CABLE CONNECTORS

PVC



- APPLICATION:** Used to connect non-metallic sheathed cable to a steel outlet box or other metal enclosure. Snap-in design. Dry location.



Contact us for Canadian regulatory listings

	SIZE	PART #	PCS / PKG	TOTAL CTN QTY	CTN WT
CCP	1/2"	75111B	35 / CCP	4 CCP's	11.54
BULK	3/4"	75102B	25 / BOX	10 BOXES	8.07

## CLAMP CONNECTORS

Zinc Die Cast

- APPLICATION:** Used to connect non-metallic sheathed cable to a steel outlet box or other metal enclosure. Dry location.
  - <sup>1</sup> Fits NM cable: #14/2, 12/2, 12/3, AWG or 2 #14/2 AWG
  - <sup>2</sup> Fits NM cable: #12/3 - 8/3 AWG or flex cord 0.460" - 0.720" diameter
  - <sup>3</sup> Fits NM cable: #14/2 - 6/3 AWG or 3 #10/3 AWG or flex cord 0.450" - 0.730" diameter
  - <sup>4</sup> Fits NM cable: #6/3 - 2/3 AWG or flex cord 0.800" - 1.350" diameter; or SE cable 3 conductor or 3 #1/0 min; 3 conductor or 3 #2/0 max
  - <sup>5</sup> Fits NM cable, flex cords, multi-flex cords; fitting range 0.835" - 1.520" diameter or SE cable 2 conductor 4/0
  - <sup>6</sup> Fits NM cable, flex cords, multi-flex cords; fitting range 1.085" - 1.520" diameter



Contact us for Canadian regulatory listings



	SIZE	PART #	PCS / PKG	TOTAL CTN QTY	CTN WT
CCP	3/8" (1/2" KO)	05103B <sup>1</sup>	100 / CCP	4 CCP's	47.72
	3/4"	05107B <sup>2</sup>	50 / CCP	4 CCP's	41.36
	1"	05110B <sup>3</sup>	25 / CCP	4 CCP's	33.10
BULK	1 1/4"	05112B <sup>4</sup>	10 / BOX	10 BOXES	21.49
	1 1/2"	05115B <sup>5</sup>	5 / BOX	10 BOXES	22.25
	2"	05120B <sup>6</sup>	10 / BOX	10 BOXES	45.83

## CLAMP CONNECTORS - SERVICE ENTRANCE

Zinc / Steel

- APPLICATION:** Used to connect oval service cable to steel outlet box or other metal enclosure. Dry location.
  - <sup>1</sup> Fits SE oval cable: 1.065 x 0.635 - 1.250" x 0.740"
  - <sup>2</sup> Fits SE oval cable: 1.405 x 0.875 - 1.450" x 0.857"



Contact us for Canadian regulatory listings



	SIZE	PART #	PCS / PKG	TOTAL CTN QTY	CTN WT
BULK	1 1/4"	05312B <sup>1</sup>	10 / BOX	10 BOXES	21.49
	1 1/2"	05315B <sup>2</sup>	5 / BOX	10 BOXES	11.64
	2"	05320B <sup>2</sup>	10 / BOX	4 BOXES	18.88

## CLAMP CONNECTORS - SNAP-IN

Zinc

- APPLICATION:** Used to connect non-metallic sheathed cable to a steel outlet box or other metal enclosure. Snap-in design for quick, easy two-step installation and no locknuts required. Dry Location. Only UL approved for one non-metallic cable.

<sup>1</sup> Fits NM cable: #14/2 - 12/2 or flex cord .209" - .450" diameter

<sup>2</sup> Fits NM cable: #10/3 - 8/2, SE oval 0.36 x 0.61 - 0.51 x 0.80 or SER cable 0.05" - 0.75" diameter



Contact us for Canadian regulatory listings



	SIZE	PART #	PCS / PKG	TOTAL CTN QTY	CTN WT
CCP	3/8" (1/2" KO)	85103NB <sup>1</sup>	100 / CCP	4 CCP's	44.76
BULK	3/4"	85107NB <sup>2</sup>	50 / BOX	10 BOXES	38.75

## CLAMP CONNECTORS - TWO-PIECE

Zinc Electro-Plated Steel

- APPLICATION:** Used to secure #14 - #10 non-metallic sheathed cable to a steel outlet box or other metal enclosure. No locknut is required. Dry location.

<sup>1</sup> NM cable wire range .160 - .560

<sup>2</sup> NM cable wire range .200 - .850

<sup>3</sup> NM cable wire range .250 - 1.000

<sup>4</sup> NM cable wire range .312 - 1.200

	SIZE	PART #	PCS / PKG	TOTAL CTN QTY	CTN WT
BULK	3/8" (1/2" KO)	65103B <sup>1</sup>	100 / BOX	10 BOXES	38.51
	3/4" - 1"	65110B <sup>2</sup>	50 / BOX	10 BOXES	37.51
	1 1/4"	65112B <sup>3</sup>	25 / BOX	10 BOXES	30.23
	1 1/2"	65115B <sup>4</sup>	25 / BOX	1 BOX	



## CLAMP CONNECTORS - COMBINATION

Zinc Die Cast

- APPLICATION:** Used to connect flexible metallic conduit, AC, MC, or NM cable to steel outlet box or other enclosure. Miscellaneous: 3/8" size fits 1/2" knockout. Dry location. Fits AC cable - steel 14/2 - 10/2, 0.463 - 0.59 and aluminum 14/2 - 10/2, 0.47 - 0.552; MCI cable - steel 14/2 - 10/3, 0.46 - 0.55 and aluminum 14/2 - 10/3 0, .465 - 0.585; MCI-A cable - aluminum 12/2 - 10/2, 0.435 - 0.518; HCF MCI-A cable - aluminum 12/2-10/2, 0.416 - 0.495; FMC steel and aluminum 3/8"



Contact us for Canadian regulatory listings



	SIZE	PART #	PCS / PKG	TOTAL CTN QTY	CTN WT
CCP	3/8" (1/2" KO)	05711B	50 / CCP	10 CCP's	26.18

## SADDLE CONNECTORS

Zinc Die Cast

- APPLICATION:** Used to connect flexible metallic conduit, AC, MC and NM sheathed cable to a steel outlet box or other metal enclosure. Dry location.



Contact us for Canadian regulatory listings



	SIZE	PART #	PCS / PKG	TOTAL CTN QTY	CTN WT
CCP	3/8" (1/2" KO)	06703B	50 / CCP	4 CCP's	37.06

### WITH INSULATED THROAT

BULK	3/8" (1/2" KO)	86703B	50 / BOX	10 BOXES	37.15
------	----------------	--------	----------	----------	-------

### DUPLEX CONNECTORS

Zinc Die Cast

- **APPLICATION:** Used to connect two pieces of flexible metallic conduit, AC, MC, or NM sheathed cable, to a steel outlet box or other metal enclosure when using only one knockout opening. Dry location.
- **SUITABLE FOR:**
  - #14-2 thru #12-3 wire with ground NM sheathed cable
  - #14-2 wire steel armored cable
  - #14-2 wire with ground aluminum armored cable
  - 3/8" FMC, aluminum smooth sheath metal clad cable 0.410" - 0.500" diameter
  - 3/8" FMC, aluminum interlocked metal clad cable 0.460" - 0.538" diameter
  - 3/8" FMC, steel interlocked metal clad cable 0.438" - 0.560" diameter



Contact us for Canadian regulatory listings



	SIZE	PART #	PCS / PKG	TOTAL CTN QTY	CTN WT
CCP	3/8" (1/2" KO)	15803B	25 / CCP	4 CCP's	30.84

### WATER-TIGHT UF CONNECTORS

Zinc Die Cast

- **APPLICATION:** Used to secure #14 - #12 UF cable to a waterproof box with threaded hub. Dry location.



Contact us for Canadian regulatory listings



	SIZE	PART #	PCS / PKG	TOTAL CTN QTY	CTN WT
BULK	1/2"	06605B	25 / BOX	10 BOXES	25.83
	3/4"	06607B	25 / BOX	10 BOXES	37.83

### EMT-TO-NON-METALLIC COUPLINGS

Zinc Die Cast

- **APPLICATION:** Used to join EMT conduit to non-metallic sheathed cable. Dry location.



Contact us for Canadian regulatory listings



	SIZE	PART #	PCS / PKG	TOTAL CTN QTY	CTN WT
CCP	1/2"	15301B	25 / CCP	4 CCP's	17.58
BULK	1/2"	15303B	50 / BOX	10 BOXES	32.25

### ONE-HOLE STRAPS

Steel

- **APPLICATION:** Used to secure non-metallic sheathed cable or service entrance cable (SEU, SE) to a wood, masonry or similar surface. Dry location.



Contact us for Canadian regulatory listings



	SIZE	PART #	PCS / PKG	TOTAL CTN QTY	CTN WT
BULK	#12/2 - #14/2	62171B	100 / BOX	10 BOXES	13.83



**HALEX**

BEYOND THE CURRENT



## LIQUID-TIGHT CONDUIT FITTINGS

- *Straight Liquid-Tight Connectors One-Piece* ..... 44
- *Straight Liquid-Tight Connectors Multi-Piece* ..... 44
- *90 Degree Liquid-Tight Connectors One-Piece* ..... 45
- *90 Degree Liquid-Tight Connectors Multi-Piece* ..... 45
- *Straight Liquid-Tight Connectors Malleable Iron* ..... 46
- *45 Degree Liquid-Tight Connectors Malleable Iron* ..... 46
- *90 Degree Liquid-Tight Connectors Malleable Iron* ..... 47
- *Straight Quick-Set Liquid Tight Connectors*..... 47
- *90 Degree Quick-Set Liquid Tight Connectors*..... 48
- *Screw-In Couplings* ..... 48

### STRAIGHT LIQUID TIGHT CONNECTORS - ONE-PIECE

Zinc Die Cast

- **APPLICATION:** Used to connect flexible metallic or type B non-metallic liquid tight conduit to a steel outlet box or other metal enclosure or hub. Indoors or outdoors.
- **FEATURES:** Straight connection. One-piece design allows for quick and easy installation.



Contact us for Canadian regulatory listings



	SIZE	PART #	PCS / PKG	TOTAL CTN QTY	CTN WT
BULK	1/2"	<b>06305B</b>	25 / BOX	4 BOXES	15.14
	3/4"	<b>06307B</b>	10 / BOX	10 BOXES	22.83

*WITH INSULATED THROAT*

BULK	3/4"	<b>86307B</b>	10 / BOX	10 BOXES	22.83
------	------	---------------	----------	----------	-------

### STRAIGHT LIQUID TIGHT CONNECTORS - MULTI-PIECE

Zinc Die Cast

- **APPLICATION:** Used to connect flexible metallic or type B non-metallic liquid tight conduit to a steel outlet box or other metal enclosure or hub. Indoors or outdoors.
- **FEATURES:** Multi-piece straight connection.



Contact us for Canadian regulatory listings



	SIZE	PART #	PCS / PKG	TOTAL CTN QTY	CTN WT
BULK	3/8"	<b>16203B</b>	25 / BOX	4 BOXES	16.14
	1/2"	<b>16205B</b>	25 / BOX	4 BOXES	14.20
	3/4"	<b>16207B</b>	10 / BOX	10 BOXES	19.25
	1"	<b>16210B</b>	10 / BOX	10 BOXES	28.95
	1 1/4"	<b>16212B</b>	4 / BOX	10 BOXES	25.05
	1 1/2"	<b>16215B</b>	2 / BOX	10 BOXES	15.83
	2"	<b>16220B</b>	2 / BOX	10 BOXES	18.39

*WITH INSULATED THROAT*

BULK	3/8"	<b>96203B</b>	25 / BOX	1 BOX	17.14
	1/2"	<b>96205B</b>	25 / BOX	1 BOX	15.14
	3/4"	<b>96207B</b>	10 / BOX	10 BOXES	22.83
	1"	<b>96210B</b>	10 / BOX	1 BOX	37.25
	1 1/4"	<b>96212B</b>	4 / BOX	10 BOXES	25.05
	1 1/2"	<b>96215B</b>	2 / BOX	10 BOXES	16.51
	2"	<b>96220B</b>	2 / BOX	1 BOX	19.91
	2 1/2"	<b>96225B</b>	1 / BOX	1 BOX	2.21
	3"	<b>96230B</b>	1 / BOX	1 BOX	3.22



## 90° LIQUID TIGHT CONNECTORS - ONE-PIECE

Zinc Die Cast

- **APPLICATION:** Used to connect flexible metallic or type B non-metallic conduit to a steel outlet box or other metal enclosure. Indoors or outdoors.
- **FEATURES:** 90 degree connection. One-piece design allows for quick and easy installation.



Contact us for Canadian regulatory listings



	SIZE	PART #	PCS / PKG	TOTAL CTN QTY	CTN WT
BULK	1/2"	<b>06805B</b>	25 / BOX	4 BOXES	19.45

## 90° LIQUID TIGHT CONNECTORS - MULTI-PIECE

Zinc Die Cast

- **APPLICATION:** Used to connect flexible metallic or type B non-metallic liquid tight conduit to a steel outlet box or other metal enclosure or hub. Indoors or outdoors.
- **FEATURES:** Multi-piece 90 degree connection.



Contact us for Canadian regulatory listings



	SIZE	PART #	PCS / PKG	TOTAL CTN QTY	CTN WT
BULK	3/8"	<b>16903B</b>	25 / BOX	4 BOXES	21.14
	1/2"	<b>16905B</b>	25 / BOX	4 BOXES	22.38
	3/4"	<b>16907B</b>	10 / BOX	10 BOXES	28.35
	1"	<b>16910B</b>	5 / BOX	10 BOXES	35.25
	1 1/4"	<b>16914B</b>	4 / BOX	10 BOXES	44.51
	1 1/2"	<b>16915B</b>	2 / BOX	10 BOXES	28.51
	2"	<b>16920B</b>	2 / BOX	10 BOXES	41.71

### WITH INSULATED THROAT

BULK	2"	<b>96920B</b>	2 / BOX	10 BOXES	41.71
	2 1/2"	<b>96925B</b>	1 / BOX	1 BOX	3.80



### STRAIGHT LIQUID TIGHT CONNECTORS

Malleable Iron

- **APPLICATION:** Used to connect flexible metallic liquid tight conduit to a steel outlet box or other metal enclosure or hub. Indoors or outdoors.
- **FEATURES:** Straight connection



Contact us for Canadian regulatory listings



	SIZE	PART #	PCS / PKG	TOTAL CTN QTY	CTN WT
BULK	3/8"	<b>66203B</b>	25 / BOX	4 BOXES	15.56
	1/2"	<b>66205B</b>	25 / BOX	4 BOXES	16.34
	3/4"	<b>66206B</b>	10 / BOX	10 BOXES	31.83
	1"	<b>66210B</b>	5 / BOX	4 BOXES	11.68
	1 1/4"	<b>66212B</b>	5 / BOX	4 BOXES	12.34
	1 1/2"	<b>66215B</b>	2 / BOX	10 BOXES	16.23
	2"	<b>66220B</b>	2 / BOX	10 BOXES	28.85
	2 1/2"	<b>66225B</b>	1 / BOX	1 BOX	
	3"	<b>66230B</b>	1 / BOX	1 BOX	
	3 1/2"	<b>66235B</b>	1 / BOX	1 BOX	
	4"	<b>66240B</b>	1 / BOX	1 BOX	

#### WITH INSULATED THROAT



BULK	3/8"	<b>86203B</b>	25 / BOX	1 BOX	15.54
	1/2"	<b>86205B</b>	25 / BOX	4 BOXES	16.34
	3/4"	<b>86207B</b>	10 / BOX	10 BOXES	24.14
	1"	<b>86210B</b>	5 / BOX	4 BOXES	8.79
	1 1/4"	<b>86212B</b>	5 / BOX	4 BOXES	12.34
	1 1/2"	<b>86215B</b>	2 / BOX	10 BOXES	16.23
	2"	<b>86220B</b>	2 / BOX	10 BOXES	28.85
	2 1/2"	<b>86225B</b>	1 / BOX	1 BOX	2.62
	3"	<b>86230B</b>	1 / BOX	1 BOX	3.91
	4"	<b>86240B</b>	1 / BOX	1 BOX	6.56

### 45° LIQUID TIGHT CONNECTORS

Malleable Iron

- **APPLICATION:** Used to connect flexible metallic liquid tight conduit to a steel outlet box or other metal enclosure or hub. Indoors or outdoors.
- **FEATURES:** 45 degree connection.



Contact us for Canadian regulatory listings



	SIZE	PART #	PCS / PKG	TOTAL CTN QTY	CTN WT
BULK	3/8"	<b>66503B</b>	10 / BOX	10 BOXES	29.95
	1/2"	<b>66505B</b>	10 / BOX	10 BOXES	27.96
	3/4"	<b>66507B</b>	10 / BOX	4 BOXES	14.64
	1"	<b>66510B</b>	5 / BOX	4 BOXES	13.94
	1 1/4"	<b>66512B</b>	5 / BOX	4 BOXES	19.79
	1 1/2"	<b>66515B</b>	2 / BOX	10 BOXES	24.25
	2"	<b>66520B</b>	2 / BOX	10 BOXES	37.89

#### WITH INSULATED THROAT



BULK	2 1/2"	<b>86525B</b>	1 / BOX	1 BOX	4.94
------	--------	---------------	---------	-------	------



## 90° LIQUID TIGHT CONNECTORS

Malleable Iron

- **APPLICATION:** Used to connect flexible metallic liquid tight conduit to a steel outlet box or other metal enclosure or hub. Indoors or outdoors.
- **FEATURES:** 90 degree connection.



Contact us for Canadian regulatory listings

	SIZE	PART #	PCS / PKG	TOTAL CTN QTY	CTN WT
BULK	1/2"	<b>66905B</b>	10 / BOX	10 BOXES	30.75
	3/4"	<b>66907B</b>	10 / BOX	4 BOXES	19.14
	1"	<b>66910B</b>	5 / BOX	4 BOXES	16.34
	1 1/4"	<b>66912B</b>	5 / BOX	4 BOXES	24.83
	1 1/2"	<b>66915B</b>	2 / BOX	10 BOXES	31.89
	2"	<b>66920B</b>	2 / BOX	10 BOXES	42.51
	2 1/2"	<b>66925B</b>	1 / BOX	1 BOX	
	3"	<b>66930B</b>	1 / BOX	1 BOX	
	3 1/2"	<b>66935B</b>	1 / BOX	1 BOX	
	4"	<b>66940B</b>	1 / BOX	1 BOX	



WITH INSULATED THROAT

BULK	3/8"	<b>86903B</b>	10 / BOX	1 BOX	28.25
	1/2"	<b>86905B</b>	10 / BOX	10 BOXES	31.25
	3/4"	<b>86907B</b>	10 / BOX	4 BOXES	19.14
	1"	<b>86910B</b>	5 / BOX	4 BOXES	16.34
	1 1/4"	<b>86912B</b>	5 / BOX	4 BOXES	24.83
	1 1/2"	<b>86915B</b>	2 / BOX	10 BOXES	27.25
	2"	<b>86920B</b>	2 / BOX	1 BOX	
	2 1/2"	<b>86925B</b>	1 / BOX	1 BOX	6.12
		3"	<b>86930B</b>	1 / BOX	1 BOX



## STRAIGHT QUICK-SET LIQUID TIGHT CONNECTORS

Nylon

- **APPLICATION:** Used to connect type B non-metallic liquid tight conduit to a weatherproof outlet box, pool/spa equipment motor, central air conditioning unit or various other electrical enclosures or hubs. Indoors or outdoors.
- **FEATURES:** Straight connection.



Contact us for Canadian regulatory listings

	SIZE	PART #	PCS / PKG	TOTAL CTN QTY	CTN WT
BULK	3/8"	<b>76203B</b>	25 / BOX	1 BOX	
	1/2"	<b>76205B</b>	25 / BOX	4 BOXES	7.52
	3/4"	<b>76207B</b>	10 / BOX	10 BOXES	11.59
	1"	<b>76210B</b>	5 / BOX	10 BOXES	8.25
	1 1/4"	<b>76212B</b>	5 / BOX	1 BOX	1.24
	1 1/2"	<b>76215B</b>	2 / BOX	1 BOX	0.64
		2"	<b>76220B</b>	2 / BOX	1 BOX



### 90° QUICK-SET LIQUID TIGHT CONNECTORS

Nylon

- **APPLICATION:** Used to connect type B non-metallic liquid tight conduit to a weatherproof outlet box, pool/spa equipment motor, central air conditioning unit or various other electrical enclosures or hubs. Indoors or outdoors.
- **FEATURES:** 90 degree connection



Contact us for Canadian regulatory listings



	SIZE	PART #	PCS / PKG	TOTAL CTN QTY	CTN WT
BULK	1/2"	<b>76905B</b>	10 / BOX	10 BOXES	9.45
	3/4"	<b>76907B</b>	10 / BOX	10 BOXES	12.51
	1"	<b>76910B</b>	5 / BOX	10 BOXES	10.60
	1 1/4"	<b>76912B</b>	5 / BOX	5 BOXES	9.47
	1 1/2"	<b>76915B</b>	2 / BOX	5 BOXES	5.13
	2"	<b>76920B</b>	2 / BOX	5 BOXES	8.18

### LQD/EMT COUPLINGS

Steel

- **APPLICATION:** Used to connect EMT conduit to a liquid tight conduit or AC whip. Indoors only.



Contact us for Canadian regulatory listings



	SIZE	PART #	PCS / PKG	TOTAL CTN QTY	CTN WT
BULK	1/2"	<b>60105B</b>	25 / BOX	1 BOX	
	3/4"	<b>60107B</b>	20 / BOX	1 BOX	
	2"	<b>60110B</b>	10 / BOX	1 BOX	

### LQD/RGD COUPLINGS

Steel

- **APPLICATION:** Used to connect EMT conduit to a liquid tight conduit or AC whip. Outdoor use.



Contact us for Canadian regulatory listings



	SIZE	PART #	PCS / PKG	TOTAL CTN QTY	CTN WT
BULK	3/8"	<b>93503B</b>	20 / BOX	1 BOX	
	1/2"	<b>93505B</b>	20 / BOX	1 BOX	
	3/4"	<b>93507B</b>	10 / BOX	1 BOX	
	1"	<b>93510B</b>	5 / BOX	1 BOX	
	1 1/4"	<b>93512B</b>	5 / BOX	1 BOX	
	1 1/2"	<b>93515B</b>	12 / BOX	1 BOX	
	2"	<b>93520B</b>	5 / BOX	1 BOX	

### SCREW-IN COUPLINGS

PVC

- **APPLICATION:** Used to connect two lengths of type B non-metallic liquid tight conduit. Indoors or outdoors.



Contact us for Canadian regulatory listings



	SIZE	PART #	PCS / PKG	TOTAL CTN QTY	CTN WT
BULK	1/2"	<b>74505B</b>	30 / BOX	1 BOX	1.81
	3/4"	<b>74507B</b>	25 / BOX	1 BOX	1.92



- *Set-Screw Compression Connectors and Couplings*..... 50-51
- *Elbows* ..... 53-56
- *Nipples* ..... 56-59
- *Water-Tight Conduit Hubs* ..... 60
- *Spacers and Bushings* ..... 60-61
- *Washers* ..... 62
- *Locknuts* ..... 62-64
- *Reducing Bushings* ..... 65
- *Straps*..... 65-67
- *Conduit Bodies* ..... 67-69
- *Conduit Body Covers and Gaskets* ..... 70-74

## **RIGID CONDUIT FITTINGS**

### SET-SCREW CONNECTORS

Zinc Die Cast

- **APPLICATION:** Used to connect EMT, Rigid or IMC conduit to steel outlet box, load center, or other metal enclosure. Indoors only.



Contact us for Canadian regulatory listings



	SIZE	PART #	PCS / PKG	TOTAL CTN QTY	CTN WT
BULK	2 1/2"	<b>12125B</b>	12 / BOX	1 BOX	9.82
	3"	<b>12130B</b>	12 / BOX	1 BOX	26.29
	3 1/2"	<b>12135B</b>	10 / BOX	1 BOX	12.29
	4"	<b>12140B</b>	6 / BOX	1 BOX	9.24
	1/2"	<b>62905B</b>	50 / BOX	1 BOX	
	3/4"	<b>62907B</b>	25 / BOX	1 BOX	

WITH INSULATED THROAT

BULK	3 1/2"	<b>92135B</b>	10 / BOX	1 BOX	12.35
------	--------	---------------	----------	-------	-------

### SET-SCREW CONNECTORS

Steel

- **APPLICATION:** Used to connect EMT, Rigid or IMC conduit to steel outlet box, load center, or other metal enclosure. Indoors only.



Contact us for Canadian regulatory listings



	SIZE	PART #	PCS / PKG	TOTAL CTN QTY	CTN WT
BULK	2 1/2"	<b>62725B</b>	12 / BOX	1 BOX	15.22
	3 1/2"	<b>62735B</b>	6 / BOX	1 BOX	10.64
	4"	<b>62740B</b>	6 / BOX	1 BOX	15.19

WITH INSULATED THROAT

BULK	4"	<b>82740B</b>	6 / BOX	1 BOX	15.16
------	----	---------------	---------	-------	-------

### SET-SCREW COUPLINGS

Zinc Die Cast

- **APPLICATION:** Used to join two lengths of EMT, Rigid or IMC conduit together. Indoors only.



	SIZE	PART #	PCS / PKG	TOTAL CTN QTY	CTN WT
BULK	2 1/2"	<b>12225B</b>	12 / BOX	1 BOX	10.28
	3"	<b>12230B</b>	12 / BOX	1 BOX	13.10
	4"	<b>12240B</b>	6 / BOX	1 BOX	10.43

## SET-SCREW COUPLINGS

Steel

- **APPLICATION:** Used to join two lengths of EMT, Rigid or IMC conduit together. Indoors only.



Contact us for Canadian regulatory listings

	SIZE	PART #	PCS / PKG	TOTAL CTN QTY	CTN WT
BULK	2 1/2"	<b>62825B</b>	12 / BOX	1 BOX	20.74
	3"	<b>62830B</b>	12 / BOX	1 BOX	21.93
	3 1/2"	<b>62835B</b>	6 / BOX	1 BOX	13.64



## COMPRESSION CONNECTORS

Zinc Die Cast

- **APPLICATION:** Used to connect EMT, threadless Rigid or IMC conduit to a steel outlet box, load center, or other metal enclosure. Indoors only.



Contact us for Canadian regulatory listings

	SIZE	PART #	PCS / PKG	TOTAL CTN QTY	CTN WT
BULK	2 1/2"	<b>02125B</b>	12 / BOX	1 BOX	13.84
	3"	<b>02130B</b>	12 / BOX	1 BOX	16.86
	3 1/2"	<b>02135B</b>	10 / BOX	1 BOX	17.63
	4"	<b>02140B</b>	6 / BOX	1 BOX	12.49



## COMPRESSION CONNECTORS

Steel

- **APPLICATION:** Used to join threadless Rigid or IMC conduit to a steel outlet box OR other metal enclosure. Indoors only.



Contact us for Canadian regulatory listings

	SIZE	PART #	PCS / PKG	TOTAL CTN QTY	CTN WT
BULK	1/2"	<b>63505B</b>	25 / BOX	4 BOXES	37.14
	3/4"	<b>63507B</b>	25 / BOX	4 BOXES	37.14
	1"	<b>63510B</b>	5 / BOX	1 BOX	1.60
	1 1/4"	<b>63512B</b>	5 / BOX	1 BOX	2.48
	1 1/2"	<b>63515B</b>	2 / BOX	1 BOX	1.51
	2"	<b>63520B</b>	2 / BOX	1 BOX	2.11
	2 1/2"	<b>6325B</b>	12 / BOX	1 BOX	21.96



### WITH INSULATED THROAT

	SIZE	PART #	PCS / PKG	TOTAL CTN QTY	CTN WT
BULK	1/2"	<b>82405B</b>	12 / BOX	1 BOX	
	3/4"	<b>82407B</b>	12 / BOX	1 BOX	
	1"	<b>82410B</b>	20 / BOX	1 BOX	
	1 1/4"	<b>82412B</b>	10 / BOX	1 BOX	
	1 1/2"	<b>82415B</b>	5 / BOX	1 BOX	
	2"	<b>82420B</b>	5 / BOX	1 BOX	



### COMPRESSION COUPLINGS

Zinc Die Cast

- **APPLICATION:** Used to join two lengths of EMT, threadless Rigid or IMC conduit together. Indoors only.

Contact us for Canadian regulatory listings



	SIZE	PART #	PCS / PKG	TOTAL CTN QTY	CTN WT
BULK	2 1/2"	<b>02225B</b>	12 / BOX	1 BOX	15.95
	3"	<b>02230B</b>	12 / BOX	1 BOX	21.11
	4"	<b>02240B</b>	6 / BOX	1 BOX	15.12

### COMPRESSION COUPLINGS

Steel

- **APPLICATION:** Used to join two lengths of threadless Rigid or IMC conduit together. Indoors only.

Contact us for Canadian regulatory listings



	SIZE	PART #	PCS / PKG	TOTAL CTN QTY	CTN WT
BULK	1/2"	<b>63605B</b>	10 / BOX	1 BOX	1.41
	3/4"	<b>63607B</b>	10 / BOX	1 BOX	2.14
	1"	<b>63610B</b>	5 / BOX	1 BOX	2.26
	1 1/4"	<b>63612B</b>	5 / BOX	1 BOX	3.99
	1 1/2"	<b>63615B</b>	2 / BOX	1 BOX	1.85
	2"	<b>63620B</b>	2 / BOX	1 BOX	2.24
	2 1/2"	<b>62425B</b>	12 / BOX	1 BOX	31.22
	3"	<b>62430B</b>	6 / BOX	1 BOX	16.59
	4"	<b>62440B</b>	6 / BOX	1 BOX	28.91

### RIGID-TO-EMT COUPLINGS

Steel

- **APPLICATION:** Used to join EMT conduit to Rigid metal conduit. Indoors only.

Contact us for Canadian regulatory listings



	SIZE	PART #	PCS / PKG	TOTAL CTN QTY	CTN WT
BULK	1/2"	<b>15304B</b>	25 / BOX	1 BOX	3.96
	3/4"	<b>15306B</b>	25 / BOX	1 BOX	5.06

### RIGID THREE-PIECE COUPLINGS

Malleable Iron

- **APPLICATION:** Used as a threaded coupling between lengths of threaded Rigid or IMC conduit, when neither can be rotated. Indoors or outdoors.

Contact us for Canadian regulatory listings



	SIZE	PART #	PCS / PKG	TOTAL CTN QTY	CTN WT
BULK	1/2"	<b>65505B</b>	25 / BOX	1 BOX	
	3/4"	<b>65507B</b>	25 / BOX	1 BOX	6.64
	1"	<b>65510B</b>	10 / BOX	1 BOX	
	1 1/4"	<b>65512B</b>	10 / BOX	1 BOX	
	1 1/2"	<b>65515B</b>	10 / BOX	1 BOX	
	2"	<b>65520B</b>	10 / BOX	1 BOX	
	2 1/2"	<b>65525B</b>	10 / BOX	1 BOX	
	3"	<b>65530B</b>	1 / BOX	1 BOX	
	3 1/2"	<b>65535B</b>	1 / BOX	1 BOX	
	4"	<b>65540B</b>	1 / BOX	1 BOX	

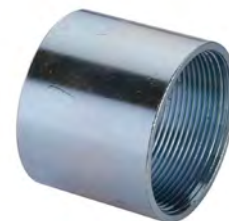
## ALUMINUM COUPLINGS

*Aluminum*

- **APPLICATION:** Used to join threaded Rigid or IMC conduit together. Indoors or outdoors.



Contact us for Canadian regulatory listings



	SIZE	PART #	PCS / PKG	TOTAL CTN QTY	CTN WT
UPC	1 1/4"	<b>54012</b>	1 / BOX	5 BOXES	1.08
	2"	<b>54020</b>	1 / BOX	3 BOXES	1.09

## 90° SHORT RADIUS ELBOWS

*Zinc Die Cast*

- **APPLICATION:** Used to connect Rigid or IMC conduit to an outlet box where a close radius is desired. Indoors or outdoors.



Contact us for Canadian regulatory listings



	SIZE	PART #	PCS / PKG	TOTAL CTN QTY	CTN WT
UPC	1/2"	<b>19005</b>	1 / BAG	20 BAGS	2.26
	3/4"	<b>19007</b>	1 / BAG	10 BAGS	1.90

## RIGID COUPLINGS

*Steel*

- **APPLICATION:** Used to join threaded Rigid or IMC conduit together. Indoors or outdoors.



Contact us for Canadian regulatory listings



	SIZE	PART #	PCS / PKG	TOTAL CTN QTY	CTN WT
BULK	1/2"	<b>64001B</b>	100 / BOX	1 BOX	12.37
	1/2"	<b>64005B</b>	100 / BOX	1 BOX	12.28
	3/4"	<b>64007B</b>	50 / BOX	1 BOX	9.23
	1"	<b>64010B</b>	30 / BOX	1 BOX	
	1 1/4"	<b>64012B</b>	25 / BOX	1 BOX	
	1 1/2"	<b>64015B</b>	25 / BOX	1 BOX	
	2"	<b>64020B</b>	20 / BOX	1 BOX	
	2 1/2"	<b>64025B</b>	12 / BOX	1 BOX	
	3"	<b>64030B</b>	8 / BOX	1 BOX	
	3 1/2"	<b>64035B</b>	4 / BOX	1 BOX	
	4"	<b>64040B</b>	4 / BOX	1 BOX	



### RIGID TO RIGID PULL ELBOWS

Zinc Die Cast

- APPLICATION:** Used as a wire pulling elbow to facilitate wire pulling through a sharp bend in a run of threaded Rigid or IMC conduit. Indoors or outdoors.



Contact us for Canadian regulatory listings

	SIZE	PART #	PCS / PKG	TOTAL CTN QTY	CTN WT
BULK	1/2"	<b>94105B</b>	10 / BOX	10 BOXES	19.66
	3/4"	<b>94107B</b>	5 / BOX	10 BOXES	16.27



### EMT/RIGID-TO-EMT/RIGID COMBO ELBOWS

Zinc Die Cast

- APPLICATION:** Used as a wire pulling elbow to facilitate wire pulling through a sharp bend in a run of threaded Rigid or IMC conduit. RGD indoors or outdoors. EMT indoors only.



Contact us for Canadian regulatory listings

	SIZE	PART #	PCS / PKG	TOTAL CTN QTY	CTN WT
UPC	1/2"	<b>94505</b>	1 / BOX	10 BOXES	1.85
	3/4"	<b>94507</b>	1 / BOX	10 BOXES	3.01
	1"	<b>94510</b>	1 / BOX	5 BOXES	3.03



### PULL ELBOW COUPLINGS

WITH GASKET AND COVER

Zinc Die Cast

- APPLICATION:** Used to join threadless Rigid or IMC conduit to a steel outlet box OR other metal enclosure. Indoors only.



Contact us for Canadian regulatory listings

	SIZE	PART #	PCS / PKG	TOTAL CTN QTY	CTN WT
BULK	1"	<b>94110B</b>	25 / BOX	1 BOX	
	1 1/4"	<b>94212B</b>	20 / BOX	1 BOX	



### EMT/RIGID-TO-BOX COMBO ELBOW

Zinc Die Cast

- APPLICATION:** Used to connect a run of threaded Rigid or IMC conduit to an outlet box or other metal enclosure. RGD Indoors or outdoors. EMT indoor only



Contact us for Canadian regulatory listings

	SIZE	PART #	PCS / PKG	TOTAL CTN QTY	CTN WT
BULK	1"	<b>94210B</b>	25 / BOX	1 BOX	
	1 1/4"	<b>94312B</b>	20 / BOX	1 BOX	



### 90° LARGE RADIUS ELBOWS

Zinc Die Cast

- APPLICATION:** Used to connect Rigid or IMC conduit to an outlet box where a large radius is desired, for example to accommodate larger gauge wire. Indoors or outdoors.



Contact us for Canadian regulatory listings

	SIZE	PART #	PCS / PKG	TOTAL CTN QTY	CTN WT
BULK	1/2"	<b>19205B</b>	25 / BOX	1 BOX	3.06
	3/4"	<b>19207B</b>	10 / BOX	1 BOX	1.08



## RIGID-TO-BOX PULL ELBOWS

*Zinc Die Cast*

- **APPLICATION:** Used to connect a run of threaded Rigid or IMC conduit to an outlet box or other metal enclosure. Indoors or outdoors.



Contact us for Canadian regulatory listings

	SIZE	PART #	PCS / PKG	TOTAL CTN QTY	CTN WT
<i>WITHOUT GASKET</i>					
UPC	1/2"	<b>14205</b>	1 / BOX	10 BOXES	2.09
	3/4"	<b>14207</b>	1 / BOX	5 BOXES	1.36
<i>WITH GASKET</i>					
BULK	1/2"	<b>94205B</b>	10 / BOX	10 / BOXES	21.05
	3/4"	<b>94207B</b>	5 / BOX	10 / BOXES	12.13



## 45° RIGID ELBOWS

*Steel*

- **APPLICATION:** Used to allow a 45° change of direction in a run of Rigid or IMC conduit. Indoors or outdoors.



Contact us for Canadian regulatory listings

	SIZE	PART #	PCS / PKG	TOTAL CTN QTY	CTN WT
BULK	1/2"	<b>64205B</b>	50 / BOX	1 BOX	
	3/4"	<b>64207B</b>	50 / BOX	1 BOX	
	1"	<b>64210B</b>	35 / BOX	1 BOX	
	1 1/4"	<b>64212B</b>	30 / BOX	1 BOX	
	1 1/2"	<b>64215B</b>	15 / BOX	1 BOX	
	2"	<b>64220B</b>	15 / BOX	1 BOX	
	2 1/2"	<b>64225B</b>	1 / BOX	1 BOX	
	3 1/2"	<b>64235B</b>	1 / BOX	1 BOX	



## 90° RIGID ELBOWS

*Steel*

- **APPLICATION:** Used to allow a 90° change of direction in a run of Rigid or IMC conduit. Indoors or outdoors.



Contact us for Canadian regulatory listings

	SIZE	PART #	PCS / PKG	TOTAL CTN QTY	CTN WT
BULK	1/2"	<b>64105B</b>	50 / BOX	1 BOX	36.35
	3/4"	<b>64107B</b>	50 / BOX	1 BOX	55.85
	1"	<b>64110B</b>	20 / BOX	1 BOX	40.30
	1 1/4"	<b>64112B</b>	20 / BOX	1 BOX	62.00
	1 1/2"	<b>64115B</b>	10 / BOX	1 BOX	44.60
	2"	<b>64120B</b>	10 / BOX	1 BOX	67.50
	2 1/2"	<b>64125B</b>	1 / BOX	1 BOX	
	3"	<b>64130B</b>	1 / BOX	1 BOX	
	3 1/2"	<b>64135B</b>	1 / BOX	1 BOX	
	4"	<b>64140B</b>	1 / BOX	1 BOX	



## 90° ELBOWS

- **APPLICATION:** Used to allow a 90° change of direction in a run of Rigid or IMC conduit. Indoors or outdoors.

Aluminum



Contact us for Canadian regulatory listings



	SIZE	PART #	PCS / PKG	TOTAL CTN QTY	CTN WT
UPC	1 1/4"	<b>54112</b>	1 / BOX	5 BOXES	6.39
	2"	<b>54120</b>	1 / BOX	2 BOXES	5.21

## OFFSET NIPPLES

Zinc Die Cast

- **APPLICATION:** Used as an offset connector between two enclosures. Offsets the axis of the raceway by 3/4". Indoors or outdoors



Contact us for Canadian regulatory listings



	SIZE	PART #	PCS / PKG	TOTAL CTN QTY	CTN WT
BULK	1/2"	<b>04005B</b>	10 / BOX	10 BOXES	11.73
	3/4"	<b>04007B</b>	10 / BOX	10 BOXES	17.12
	1"	<b>04010B</b>	10 / BOX	10 BOXES	21.49
	1 1/4"	<b>04012B</b>	5 / BOX	10 BOXES	16.71
	1 1/2"	<b>04015B</b>	5 / BOX	10 BOXES	22.66
	2"	<b>04020B</b>	2 / BOX	10 BOXES	12.57
	2 1/2"	<b>04025B</b>	2 / BOX	1 BOX	2.87
	3"	<b>04030B</b>	1 / BOX	1 BOX	2.16

## CHASE NIPPLES

Zinc Die Cast

- **APPLICATION:** Used with a Rigid coupling to terminate threaded conduit to a knockout box or enclosure, where space within the box is limited. Used with a locknut to provide a short raceway between boxes or enclosures. Indoors or outdoors.



Contact us for Canadian regulatory listings



	SIZE	PART #	PCS / PKG	TOTAL CTN QTY	CTN WT
BULK	1/2"	<b>07005B</b>	100 / BOX	10 BOXES	35.69
	3/4"	<b>07007B</b>	50 / BOX	10 BOXES	30.90
	1"	<b>07010B</b>	25 / BOX	10 BOXES	24.98
	1 1/4"	<b>07012B</b>	25 / BOX	10 BOXES	30.25
	1 1/2"	<b>07015B</b>	25 / BOX	1 BOX	4.54
	2"	<b>07020B</b>	10 / BOX	4 BOXES	11.88
	2 1/2"	<b>07025B</b>	10 / BOX	4 BOXES	17.20
	3"	<b>07030B</b>	10 / BOX	4 BOXES	20.60
	3 1/2"	<b>07035B</b>	10 / BOX	1 BOX	
	4"	<b>07040B</b>	5 / BOX	4 BOXES	16.68

## CONDUIT NIPPLES

Steel

- **APPLICATION:** Used to connect two steel outlet boxes or other metal enclosures; use to extend a length of threaded Rigid or IMC conduit. Indoors or outdoors.



Contact us for Canadian regulatory listings

	SIZE	PART #	PCS / PKG	TOTAL CTN QTY	CTN WT
BULK	3/4" X CLOSE	<b>64307B</b>	25 / BOX	1 BOX	
	3/4" x 1 1/2"	<b>64317B</b>	25 / BOX	1 BOX	
	3/4" X 2"	<b>64327B</b>	25 / BOX	1 BOX	
	3/4" x 2 1/2"	<b>65425B</b>	25 / BOX	1 BOX	
	3/4" X 3"	<b>64332B</b>	25 / BOX	1 BOX	
	3/4" x 3 1/2"	<b>65435B</b>	25 / BOX	1 BOX	
	3/4" X 4"	<b>64342B</b>	25 / BOX	1 BOX	
	3/4" X 5"	<b>64352B</b>	25 / BOX	1 BOX	10.97
	3/4" X 6"	<b>64362B</b>	25 / BOX	1 BOX	
	3/4" X 8"	<b>64382B</b>	1 / BOX	1 BOX	0.72
	3/4" X 10"	<b>64392B</b>	1 / BOX	1 BOX	0.90
	3/4" X 12"	<b>64302B</b>	1 / BOX	1 BOX	1.08
	1/2" X CLOSE	<b>64305B</b>	25 / BOX	1 BOX	
	1/2" X 1 1/2"	<b>64311B</b>	25 / BOX	1 BOX	
	1/2" X 2"	<b>64325B</b>	1 / BOX	1 BOX	
	1/2" X 2 1/2"	<b>65325B</b>	25 / BOX	1 BOX	
	1/2" X 3"	<b>64331B</b>	25 / BOX	1 BOX	
	1/2" X 3 1/2"	<b>65335B</b>	25 / BOX	1 BOX	
1/2" X 4"	<b>64341B</b>	25 / BOX	1 BOX		
1/2" X 6"	<b>64361B</b>	25 / BOX	1 BOX		



CONTINUATION OF CHART PROVIDED ON NEXT PAGE

# RIGID CONDUIT FITTINGS

**RGD**

## CONDUIT NIPPLES

CONTINUATION OF CHART FROM PREVIOUS PAGE.

SIZE	PART #	PCS / PKG	TOTAL CTN QTY	CTN WT
1" X CLOSE	<b>65310B</b>	25 / BOX	1 BOX	
1" X 2"	<b>65313B</b>	25 / BOX	1 BOX	
1" X 2 1/2"	<b>64323B</b>	25 / BOX	1 BOX	
1" X 3"	<b>64333B</b>	25 / BOX	1 BOX	
1" x 3 1/2"	<b>66335B</b>	25 / BOX	1 BOX	
1" X 4"	<b>64343B</b>	25 / BOX	1 BOX	12.64
1" X 5"	<b>64353B</b>	25 / BOX	1 BOX	
1" X 6"	<b>64363B</b>	25 / BOX	1 BOX	
1" x 8"	<b>64383B</b>	25 / BOX	1 BOX	1.10
1" x 10"	<b>64393B</b>	1 / BOX	1 BOX	1.30
1" x 12"	<b>64303B</b>	1 / BOX	1 BOX	3.80
1 1/4 X CLOSE	<b>64312B</b>	25 / BOX	1 BOX	
1 1/4 X 2"	<b>64314B</b>	25 / BOX	1 BOX	
1 1/4" x 2 1/2"	<b>66325B</b>	25 / BOX	1 BOX	
1 1/4" X 3"	<b>64334B</b>	25 / BOX	1 BOX	
1 1/4" x 3 1/2"	<b>65635B</b>	25 / BOX	1 BOX	
1 1/4" x 4"	<b>64344B</b>	1 / BOX	1 BOX	
1 1/4" X 5"	<b>64354B</b>	25 / BOX	1 BOX	
1 1/4" X 6"	<b>64364B</b>	25 / BOX	1 BOX	
1 -1/4" x 8"	<b>64384B</b>	1 / BOX	1 BOX	1.25
1 1/4" x 10"	<b>64394B</b>	1 / BOX	1 BOX	1.80
1 1/4" x 12"	<b>64308B</b>	1 / BOX	1 BOX	
1 1/2" X CLOSE	<b>64310B</b>	25 / BOX	1 BOX	
1 1/2" X 2"	<b>64313B</b>	25 / BOX	1 BOX	
1 1/2" x 2 1/2"	<b>66425B</b>	25 / BOX	1 BOX	
1 1/2" X 3"	<b>64335B</b>	25 / BOX	1 BOX	
1 1/2" x 3 1/2"	<b>64635B</b>	25 / BOX	1 BOX	
1 1/2" x 4"	<b>64345B</b>	25 / BOX	1 BOX	20.53
1 1/2" x 5"	<b>64355B</b>	25 / BOX	1 BOX	26.37
1 1/2" X 6"	<b>64365B</b>	25 / BOX	1 BOX	
1 1/2" x 8"	<b>64385B</b>	1 / BOX	1 BOX	1.50
1 1/2" x 10"	<b>64395B</b>	1 / BOX	1 BOX	2.00
1 1/2" x 12"	<b>64605B</b>	1 / BOX	1 BOX	
2" X CLOSE	<b>64320B</b>	25 / BOX	1 BOX	
2" x 2 1/2"	<b>64625B</b>	25 / BOX	1 BOX	
2" X 3"	<b>64336B</b>	25 / BOX	1 BOX	
2" x 3 1/2"	<b>64735B</b>	25 / BOX	1 BOX	
2" x 4"	<b>64346B</b>	25 / BOX	1 BOX	24.66
2" X 5"	<b>64356B</b>	25 / BOX	1 BOX	
2" X 6"	<b>64366B</b>	25 / BOX	1 BOX	
2" X 8"	<b>64386B</b>	1 / BOX	1 BOX	
2" x 10"	<b>64396B</b>	1 / BOX	1 BOX	2.70
2" x 12"	<b>64306B</b>	1 / BOX	1 BOX	3.06

BULK



## CONDUIT NIPPLES

CONTINUATION OF CHART FROM PREVIOUS PAGE.

	SIZE	PART #	PCS / PKG	TOTAL CTN QTY	CTN WT
BULK	2 1/2" x CLOSE	<b>64617B</b>	1 / BOX	1 BOX	1.00
	2 1/2" x 3"	<b>64630B</b>	1 / BOX	1 BOX	
	2 1/2" x 3 1/2"	<b>64835B</b>	1 / BOX	1 BOX	
	2 1/2" x 4"	<b>64347B</b>	1 / BOX	1 BOX	1.50
	2 1/2" x 5"	<b>64357B</b>	1 / BOX	1 BOX	1.97
	2 1/2" x 6"	<b>64367B</b>	1 / BOX	1 BOX	2.40
	2 1/2" x 8"	<b>64387B</b>	1 / BOX	1 BOX	3.29
	2 1/2" x 10"	<b>64397B</b>	1 / BOX	1 BOX	
	2 1/2" x 12"	<b>64607B</b>	1 / BOX	1 BOX	5.05
	3" x CLOSE	<b>64618B</b>	1 / BOX	1 BOX	11.64
	3" x 3"	<b>64338B</b>	1 / BOX	1 BOX	
	3" x 3 1/2"	<b>64935B</b>	1 / BOX	1 BOX	
	3" x 4"	<b>64348B</b>	1 / BOX	1 BOX	2.00
	3" x 5"	<b>64358B</b>	1 / BOX	1 BOX	2.60
	3" x 6"	<b>64368B</b>	1 / BOX	1 BOX	3.00
	3" x 8"	<b>64388B</b>	1 / BOX	1 BOX	4.11
	3" x 10"	<b>64398B</b>	1 / BOX	1 BOX	5.28
	3" x 12"	<b>64608B</b>	1 / BOX	1 BOX	6.30
	3 1/2" x CLOSE	<b>64619B</b>	1 / BOX	1 BOX	19.20
	3 1/2" x 4"	<b>64349B</b>	1 / BOX	1 BOX	
	3 1/2" x 5"	<b>64359B</b>	1 / BOX	1 BOX	
	3 1/2" x 6"	<b>64369B</b>	1 / BOX	1 BOX	3.73
	3 1/2" x 8"	<b>64389B</b>	1 / BOX	1 BOX	
	3 1/2" x 10"	<b>64399B</b>	1 / BOX	1 BOX	6.55
	3 1/2" x 12"	<b>64309B</b>	1 / BOX	1 BOX	
	4" x CLOSE	<b>64620B</b>	1 / BOX	1 BOX	21.60
	4" x 4"	<b>64340B</b>	1 / BOX	1 BOX	2.85
	4" x 5"	<b>64350B</b>	1 / BOX	1 BOX	3.80
	4" x 6"	<b>64360B</b>	1 / BOX	1 BOX	4.40
	4" x 8"	<b>64380B</b>	1 / BOX	1 BOX	6.00
	4" x 10"	<b>64390B</b>	1 / BOX	1 BOX	7.75
	4" x 12"	<b>64300B</b>	1 / BOX	1 BOX	9.25



### WATER-TIGHT CONDUIT HUBS

Zinc Die Cast

- APPLICATION:** Used to connect Rigid or IMC conduit to a load center or other metal enclosure where a water-tight joint is required at knockouts or slip-fit holes. Indoors or outdoors.



Contact us for Canadian regulatory listings



	SIZE	PART #	PCS / PKG	TOTAL CTN QTY	CTN WT
BULK	1"	<b>16310B</b>	10 / BOX	1 BOX	
	1 1/4"	<b>16312B</b>	10 / BOX	1 BOX	
	1 1/2"	<b>16315B</b>	10 / BOX	1 BOX	
	2"	<b>16320B</b>	10 / BOX	1 BOX	
	2 1/2"	<b>16325B</b>	2 / BOX	1 BOX	3.35
	3"	<b>16330B</b>	1 / BOX	1 BOX	
	3 1/2"	<b>16335B</b>	1 / BOX	1 BOX	2.82
	4"	<b>16340B</b>	1 / BOX	1 BOX	3.26

### WATER-TIGHT CONDUIT HUBS WITH BONDING SCREW

Zinc Die Cast

- APPLICATION:** Used to connect Rigid or IMC conduit to a load center or other metal enclosure where a water-tight joint is required at knockouts or slip-fit holes. Indoors or outdoors



Contact us for Canadian regulatory listings



	SIZE	PART #	PCS / PKG	TOTAL CTN QTY	CTN WT
BULK	1/2"	<b>06405B</b>	5 / BOX	1 BOX	
	3/4"	<b>06407B</b>	1 / BOX	1 BOX	
	1"	<b>06410B</b>	1 / BOX	1 BOX	
	1 1/4"	<b>06412B</b>	1 / BOX	1 BOX	
	1 1/2"	<b>06415B</b>	1 / BOX	1 BOX	
	2"	<b>06420B</b>	1 / BOX	1 BOX	
	2 1/2"	<b>06425B</b>	1 / BOX	1 BOX	
	3"	<b>06430B</b>	25 / BOX	1 BOX	
	3 1/2"	<b>06435B</b>	50 / BOX	1 BOX	
	4"	<b>06440B</b>	10 / BOX	1 BOX	

### BOX SPACERS

Zinc Die Cast

- APPLICATION:** Used as a raceway between two steel outlet boxes or other metal enclosures. Indoors only.



Contact us for Canadian regulatory listings



	SIZE	PART #	PCS / PKG	TOTAL CTN QTY	CTN WT
BULK	1/2"	<b>16405B</b>	50 / BOX	10 BOXES	45.00
	3/4"	<b>16407B</b>	50 / BOX	10 BOXES	61.16

## CONDUIT BUSHINGS

*Zinc Die Cast*

- **APPLICATION:** Used with locknut to terminate threaded Rigid or IMC conduit to an outlet box. Indoors or outdoors.



Contact us for Canadian regulatory listings

	SIZE	PART #	PCS / PKG	TOTAL CTN QTY	CTN WT
BULK	1/2"	<b>05205B</b>	100 / BOX	10 BOXES	32.25
	3/4"	<b>05207B</b>	25 / BOX	10 BOXES	37.85
	1"	<b>05210B</b>	5 / BOX	10 BOXES	25.91
	1 1/4"	<b>05212B</b>	100 / BOX	1 BOX	
	1 1/2"	<b>05215B</b>	50 / BOX	1 BOX	
	2"	<b>05220B</b>	25 / BOX	1 BOX	
	2 1/2"	<b>05225B</b>	25 / BOX	1 BOX	
	3"	<b>05230B</b>	10 / BOX	1 BOX	
	3 1/2"	<b>05235B</b>	10 / BOX	1 BOX	
	4"	<b>05240B</b>	5 / BOX	1 BOX	



## PLASTIC BUSHINGS

*Thermoplastic*

- **APPLICATION:** Used with locknut to terminate threaded Rigid or IMC conduit to an outlet box. Indoors or outdoors.



Contact us for Canadian regulatory listings

	SIZE	PART #	PCS / PKG	TOTAL CTN QTY	CTN WT
BULK	1/2"	<b>75205B</b>	100 / BOX	10 BOXES	7.03
	3/4"	<b>75207B</b>	100 / BOX	10 BOXES	12.25
	1"	<b>75210B</b>	50 / BOX	10 BOXES	10.55
	1 1/4"	<b>75212B</b>	25 / BOX	10 BOXES	7.70
	1 1/2"	<b>75215B</b>	25 / BOX	10 BOXES	8.20
	2"	<b>75220B</b>	25 / BOX	10 BOXES	10.41
	2 1/2"	<b>75225B</b>	10 / BOX	10 BOXES	13.51
	3"	<b>75230B</b>	10 / BOX	10 BOXES	16.30
	3 1/2"	<b>75235B</b>	5 / BOX	10 BOXES	13.25
	4"	<b>75240B</b>	5 / BOX	10 BOXES	14.01



### REDUCING WASHERS

Steel

- APPLICATION:** Used to reduce the size of the knockout in a steel outlet box or other metal enclosure. Must use one inside the enclosure opening and one on the outside. Indoors or outdoors.



Contact us for Canadian regulatory listings



	SIZE	PART #	PCS / PKG	TOTAL CTN QTY	CTN WT
BULK	1/2" - 3/4"	<b>68205B</b>	250 / BOX	1 BOX	
	1" x 1/2"	<b>68305B</b>	250 / BOX	10 BOXES	52.25
	1" x 3/4"	<b>68307B</b>	250 / BOX	10 BOXES	37.53
	1 1/4" x 1/2"	<b>68405B</b>	100 / BOX	1 BOX	3.14
	1 1/4" x 3/4"	<b>68407B</b>	100 / BOX	1 BOX	3.14
	1 1/4" x 1"	<b>68410B</b>	100 / BOX	1 BOX	2.14
	1 1/2" x 1/2"	<b>68505B</b>	100 / BOX	1 BOX	4.14
	1 1/2" x 3/4"	<b>68507B</b>	100 / BOX	1 BOX	4.14
	1 1/2"-1"	<b>68510B</b>	50 / BOX	1 BOX	
	1 1/2" x 1 1/4"	<b>68512B</b>	100 / BOX	1 BOX	3.14
	2" x 1/2"	<b>68605B</b>	50 / BOX	1 BOX	4.14
	2" x 3/4"	<b>68607B</b>	50 / BOX	1 BOX	4.14
	2" x 1"	<b>68610B</b>	50 / BOX	1 BOX	3.64
	2" x 1 1/4"	<b>68612B</b>	50 / BOX	1 BOX	3.14
	2"-1 1/2"	<b>68615B</b>	25 / BOX	1 BOX	
	2 1/2" - 1/2"	<b>68525B</b>	25 / BOX	1 BOX	
	2 1/2" - 3/4"	<b>68527B</b>	25 / BOX	1 BOX	
	2 1/2" - 1"	<b>68521B</b>	25 / BOX	1 BOX	
	2 1/2" - 1/4"	<b>68522B</b>	25 / BOX	1 BOX	
	2 1/2" - 1 1/2"	<b>68529B</b>	25 / BOX	1 BOX	
2 1/2"-2"	<b>68720B</b>	25 / BOX	1 BOX		

### CONDUIT LOCKNUTS

Steel

- APPLICATION:** Used to secure Rigid, IMC conduit or various threaded fittings to a steel outlet box or other metal enclosure. Indoors or outdoors.



Contact us for Canadian regulatory listings



	SIZE	PART #	PCS / PKG	TOTAL CTN QTY	CTN WT
BULK	1/2"	<b>61905B</b>	200 / BOX	10 BOXES	22.31
	3/4"	<b>61907B</b>	100 / BOX	10 BOXES	16.33
	1"	<b>61910B</b>	100 / BOX	10 BOXES	28.61
	1 1/4"	<b>61912B</b>	50 / BOX	10 BOXES	18.71
	1 1/2"	<b>61915B</b>	50 / BOX	10 BOXES	32.25
	2"	<b>61920B</b>	50 / BOX	4 BOXES	14.74
	2 1/2"	<b>61925B</b>	25 / BOX	1 BOX	1.91
	3"	<b>61930B</b>	25 / BOX	1 BOX	4.53
	3 1/2"	<b>61935B</b>	10 / BOX	4 BOXES	10.34
	4"	<b>61940B</b>	10 / BOX	4 BOXES	11.56



## SEALING CONDUIT LOCKNUTS

Steel

- APPLICATION:** Used to secure Rigid, IMC conduit or various threaded fittings to a steel outlet box or other metal enclosures, when moisture proof protection is desired. Indoors or outdoors.



Contact us for Canadian regulatory listings

	SIZE	PART #	PCS / PKG	TOTAL CTN QTY	CTN WT
BULK	1/2"	<b>61805B</b>	50 / BOX	10 BOXES	11.83
	3/4"	<b>61807B</b>	25 / BOX	10 BOXES	9.33
	1"	<b>61810B</b>	25 / BOX	10 BOXES	11.83
	1 1/4"	<b>61812B</b>	10 / BOX	10 BOXES	9.83
	1 1/2"	<b>61815B</b>	10 / BOX	10 BOXES	9.83
	2"	<b>61820B</b>	10 / BOX	10 BOXES	13.83
	2 1/2"	<b>96125B</b>	25 / BOX	1 BOX	
	3"	<b>96130B</b>	25 / BOX	1 BOX	
	3 1/2"	<b>96135B</b>	25 / BOX	1 BOX	
	4"	<b>96140B</b>	25 / BOX	1 BOX	



## CONDUIT LOCKNUTS

Zinc Die Cast

- APPLICATION:** Used to secure Rigid, IMC conduit or various threaded fittings to a steel outlet box or other metal enclosures. Indoors or outdoors.

Contact us for Canadian regulatory listings



	SIZE	PART #	PCS / PKG	TOTAL CTN QTY	CTN WT
BULK	1/2"	<b>01905B</b>	200 / BOX	10 BOXES	19.31
	3/4"	<b>01907B</b>	100 / BOX	10 BOXES	15.83
	1"	<b>01910B</b>	100 / BOX	10 BOXES	24.45
	1 1/4"	<b>01912B</b>	50 / BOX	10 BOXES	20.45
	1 1/2"	<b>01915B</b>	50 / BOX	10 BOXES	25.20
	2"	<b>01920B</b>	50 / BOX	4 BOXES	13.60
	2 1/2"	<b>01925B</b>	25 / BOX	1 BOX	3.55
	3"	<b>01930B</b>	25 / BOX	1 BOX	5.26
	3 1/2"	<b>01935B</b>	10 / BOX	1 BOX	
	4"	<b>01940B</b>	10 / BOX	4 BOXES	10.63



## GROUNDING LOCKNUTS

Zinc Die Cast

- APPLICATION:** Used to secure Rigid, IMC conduit or various threaded fittings to a steel outlet box or other metal enclosures. Indoors or outdoors.

Contact us for Canadian regulatory listings



	SIZE	PART #	PCS / PKG	TOTAL CTN QTY	CTN WT
BULK	1/2"	<b>01805B</b>	100 / BOX	1 BOX	
	3/4"	<b>01807B</b>	100 / BOX	1 BOX	
	1"	<b>01810B</b>	50 / BOX	1 BOX	
	1 1/4"	<b>01812B</b>	50 / BOX	1 BOX	
	1 1/2"	<b>01815B</b>	25 / BOX	1 BOX	
	2"	<b>01820B</b>	25 / BOX	1 BOX	3.18
	2 1/2"	<b>01825B</b>	50 / BOX	1 BOX	
	3"	<b>01830B</b>	50 / BOX	1 BOX	
	3 1/2"	<b>01835B</b>	25 / BOX	1 BOX	
	4"	<b>01840B</b>	25 / BOX	1 BOX	



### GROUNDING LOCK NUTS

Steel

- **APPLICATION:** Used to secure Rigid, IMC conduit or various threaded fittings to a steel outlet box or other metal enclosures. Indoors or outdoors.



Contact us for Canadian regulatory listings



	SIZE	PART #	PCS / PKG	TOTAL CTN QTY	CTN WT
BULK	1/2"	<b>68105B</b>	100 / BOX	1 BOX	
	3/4"	<b>68107B</b>	100 / BOX	1 BOX	
	1"	<b>68110B</b>	50 / BOX	1 BOX	
	1 1/4"	<b>68112B</b>	50 / BOX	1 BOX	
	1 1/2"	<b>68115B</b>	25 / BOX	1 BOX	
	2"	<b>68120B</b>	20 / BOX	1 BOX	
	2 1/2"	<b>68125B</b>	50 / BOX	1 BOX	
	3"	<b>68130B</b>	50 / BOX	1 BOX	
	3 1/2"	<b>68135B</b>	25 / BOX	1 BOX	
	4"	<b>68140B</b>	25 / BOX	1 BOX	

### INSULATED METALLIC GROUNDING BUSHING

Zinc Die Cast

- **APPLICATION:** Used with locknut to terminate service conduit to a cabinet. Lug provided for bonding jumper to a neutral bus bar. Indoors or Outdoors.



Contact us for Canadian regulatory listings



	SIZE	PART #	PCS / PKG	TOTAL CTN QTY	CTN WT
BULK	1/2"	<b>95205B</b>	25 / BOX	1 BOX	1.61
	3/4"	<b>95207B</b>	25 / BOX	1 BOX	1.86
	1"	<b>95210B</b>	25 / BOX	4 BOXES	10.14
	1 1/4"	<b>95212B</b>	20 / BOX	1 BOX	2.74
	1 1/2"	<b>95215B</b>	20 / BOX	1 BOX	3.62
	2"	<b>95220B</b>	10 / BOX	1 BOX	2.09
	2 1/2"	<b>95225B</b>	10 / BOX	4 BOXES	17.23
	3"	<b>95230B</b>	10 / BOX	4 BOXES	19.99
	3 1/2"	<b>95235B</b>	5 / BOX	4 BOXES	15.59
	4"	<b>95240B</b>	5 / BOX	4 BOXES	13.63

### CLAMP BACKS

Malleable Iron

- **APPLICATION:** Used to provide spacing between mounting surface and Rigid conduit. Indoors or outdoors.



Contact us for Canadian regulatory listings



	SIZE	PART #	PCS / PKG	TOTAL CTN QTY	CTN WT
BULK	1/2"	<b>33205B</b>	25 / BOX	10 BOXES	29.75

## REDUCING BUSHINGS

Steel

Contact us for Canadian regulatory listings 

- **APPLICATION:** Used to reduce the entry size of a run of threaded conduit. Dry locations only.

	SIZE	PART #	PCS / PKG	TOTAL CTN QTY	CTN WT
BULK	3/4" x 1/2"	<b>13205B</b>	50 / BOX	10 BOXES	20.00
	1" x 1/2"	<b>13305B</b>	50 / BOX	4 BOXES	24.61
	1" x 3/4"	<b>13307B</b>	50 / BOX	4 BOXES	14.40
	1 1/4" x 1/2"	<b>13405B</b>	25 / BOX	4 BOXES	25.76
	1 1/4" x 3/4"	<b>13407B</b>	25 / BOX	1 BOX	
	1 1/4" x 1"	<b>13410B</b>	25 / BOX	4 BOXES	13.56
	1 1/2" x 1/2"	<b>13505B</b>	25 / BOX	4 BOXES	39.14
	1 1/2" x 3/4"	<b>13507B</b>	25 / BOX	4 BOXES	33.14
	1 1/2" - 1"	<b>13510B</b>	1 / BOX	1 BOX	
	1 1/2" - 1 1/4"	<b>13512B</b>	1 / BOX	1 BOX	
	2" x 1/2"	<b>13605B</b>	10 / BOX	1 BOX	8.65
	2" - 1/2"	<b>13607B</b>	10 / BOX	1 BOX	
	2" - 3/4"	<b>13610B</b>	1 / BOX	1 BOX	
	2" - 1"	<b>13612B</b>	1 / BOX	1 BOX	
	2" - 1 1/4"	<b>13615B</b>	1 / BOX	1 BOX	
	2" - 1 1/2"	<b>13715B</b>	5 / BOX	1 BOX	5.65



## ONE-HOLE STRAPS

Malleable Iron

- **APPLICATION:** Used to secure Rigid or IMC conduit to wood, masonry or similar surfaces where load bearing is required. Indoors or outdoors.

Contact us for Canadian regulatory listings 

	SIZE	PART #	PCS / PKG	TOTAL CTN QTY	CTN WT
BULK	1/2"	<b>31205B</b>	50 / BOX	10 BOXES	27.25
	3/4"	<b>31207B</b>	50 / BOX	10 BOXES	32.25
	1"	<b>31210B</b>	25 / BOX	1 BOX	
	1 1/2"	<b>31215B</b>	10 / BOX	1 BOX	
	1 1/4"	<b>31312B</b>	20 / BOX	1 BOX	
	2"	<b>31320B</b>	25 / BOX	1 BOX	
	2 1/2"	<b>31325B</b>	25 / BOX	1 BOX	
	3"	<b>31230B</b>	25 / BOX	1 BOX	
	3 1/2"	<b>31235B</b>	10 / BOX	1 BOX	
4"	<b>31240B</b>	10 / BOX	1 BOX		



## CLAMP BACK AND ONE HOLE STRAP

Malleable Iron

- **APPLICATION:** Used to secure Rigid or IMC conduit to mounting surface, and to provide space between conduit and mounting surface. Indoors or outdoors.

Contact us for Canadian regulatory listings 

	SIZE	PART #	PCS / PKG	TOTAL CTN QTY	CTN WT
UPC	1 1/4"	<b>53212</b>	1 / BAG	10 BAGS	3.66
	2"	<b>53220</b>	1 / BAG	10 BAGS	8.74



## SPEED THREAD™

### ONE HOLE STRAP SPEED THREAD

Steel



- **APPLICATION:** Used to join RGD conduit to flexible metallic conduit in a dry or wet location. Outdoors or Indoors.



Contact us for Canadian regulatory listings

	SIZE	PART #	PCS / PKG	TOTAL CTN QTY	CTN WT
CCP	1/2"	<b>61705B</b>	40 / CCP	4 CCP's	7.4
	3/4"	<b>61707B</b>	20 / CCP	4 CCP's	5.3

### ONE-HOLE STRAPS

Steel

- **APPLICATION:** Used to secure Rigid or IMC conduit to wood, masonry or similar surfaces where load bearing is required. Indoors or outdoors.



Contact us for Canadian regulatory listings



	SIZE	PART #	PCS / PKG	TOTAL CTN QTY	CTN WT
CCP	1/2"	<b>61105B</b>	100 / CCP	4 CCP's	33.50
	3/4"	<b>61107B</b>	100 / CCP	4 CCP's	54.90
BULK	1"	<b>61110B</b>	50 / BOX	10 BOXES	43.25
	1 1/4"	<b>61112B</b>	50 / BOX	1 BOX	5.23
	1 1/2"	<b>61115B</b>	25 / BOX	10 BOXES	41.96
	2"	<b>61120B</b>	10 / BOX	1 BOX	
	2 1/2"	<b>61425B</b>	50 / BOX	1 BOX	
	3 1/2"	<b>61135B*</b>	25 / BOX	1 BOX	20.23
	4"	<b>61140B*</b>	20 / BOX	1 BOX	16.33

\*Both EMT and RGD

## TWO-HOLE STRAPS

Steel

CONTINUATION OF CHART FROM PREVIOUS PAGE.


	SIZE	PART #	PCS / PKG	TOTAL CTN QTY	CTN WT
BULK	1/2"	<b>61205B</b>	100 / BOX	10 BOXES	20.55
	3/4"	<b>61207B</b>	100 / BOX	10 BOXES	24.61
	1"	<b>61210B</b>	50 / BOX	10 BOXES	23.43
	1 1/4"	<b>61212B</b>	25 / BOX	10 BOXES	16.39
	1 1/2"	<b>61215B</b>	25 / BOX	10 BOXES	29.14
	2"	<b>61220B</b>	50 / BOX	4 BOXES	23.09
	2 1/2"	<b>61225B</b>	25 / BOX	1 BOX	4.07
	3 1/2"	<b>61235B</b>	25 / BOX	1 BOX	7.73
	4"	<b>61240B</b>	20 / BOX	1 BOX	7.33



## EMT / RIGID CONDUIT BODIES

WITH COVER AND GASKET ASSEMBLED

Aluminum

Contact us for Canadian regulatory listings 

- APPLICATION:** Used to gain access to the interior of a raceway for wire pulling, splicing (with limitations as specified by NEC), and maintenance. Suitable for outdoor locations when protected by overhead cover.

	SIZE	PART #	PCS / PKG	TOTAL CTN QTY	CTN WT
<b>TYPE: LL WITH GASKET &amp; COVER</b>					
BULK	1/2"	<b>56205B</b>	10 / BOX	1 BOX	
	3/4"	<b>56207B</b>	10 / BOX	1 BOX	
	1"	<b>56210B</b>	5 / BOX	1 BOX	
	1 1/4"	<b>56212B</b>	2 / BOX	1 BOX	
	1 1/2"	<b>56215B</b>	2 / BOX	1 BOX	
	2"	<b>56220B</b>	5 / BOX	1 BOX	



<b>TYPE: C WITH COVER AND GASKET</b>					
BULK	1/2"	<b>56405B</b>	10 / BOX	1 BOX	
	3/4"	<b>56407B</b>	10 / BOX	1 BOX	
	1"	<b>56410B</b>	5 / BOX	1 BOX	
	1 1/4"	<b>56412B</b>	2 / BOX	1 BOX	
	1 1/2"	<b>56415B</b>	2 / BOX	1 BOX	
	2"	<b>56420B</b>	5 / BOX	1 BOX	



<b>TYPE: LB WITH COVER AND GASKET</b>					
BULK	1/2"	<b>57505B</b>	10 / BOX	1 BOX	
	3/4"	<b>57507B</b>	10 / BOX	1 BOX	
	1"	<b>57510B</b>	5 / BOX	1 BOX	
	1 1/4"	<b>57512B</b>	2 / BOX	1 BOX	
	1 1/2"	<b>57515B</b>	2 / BOX	1 BOX	
	2"	<b>57520B</b>	5 / BOX	1 BOX	



CONTINUATION OF CHART PROVIDED ON NEXT PAGE

## EMT / RIGID CONDUIT BODIES

WITH COVER AND GASKET ASSEMBLED



	SIZE	PART #	PCS / PKG	TOTAL CTN QTY	CTN WT
<b>TYPE: T WITH COVER AND GASKET</b>					
<b>BULK</b>	1/2"	<b>56805B</b>	10 / BOX	1 BOX	
	3/4"	<b>56807B</b>	10 / BOX	1 BOX	
	1"	<b>56810B</b>	5 / BOX	1 BOX	
	1 1/4"	<b>56812B</b>	2 / BOX	1 BOX	
	1 1/2"	<b>56815B</b>	2 / BOX	1 BOX	
	2"	<b>56820B</b>	5 / BOX	1 BOX	

**TYPE: LR WITH COVER AND GASKET**

<b>BULK</b>	1/2"	<b>56505B</b>	10 / BOX	1 BOX	
	3/4"	<b>56507B</b>	10 / BOX	1 BOX	
	1"	<b>56510B</b>	5 / BOX	1 BOX	
	1 1/4"	<b>56512B</b>	2 / BOX	1 BOX	
	1 1/2"	<b>56515B</b>	2 / BOX	1 BOX	
	2"	<b>56520B</b>	5 / BOX	1 BOX	

**TYPE: X WITH COVER AND GASKET**

<b>BULK</b>	1/2"	<b>55505B</b>	5 / BOX	1 BOX	
	3/4"	<b>55507B</b>	5 / BOX	1 BOX	
	1"	<b>55510B</b>	2 / BOX	1 BOX	
	1 1/4"	<b>55512B</b>	1 / BOX	1 BOX	
	1 1/2"	<b>55515B</b>	1 / BOX	1 BOX	
	2"	<b>55520B</b>	1 / BOX	1 BOX	

## EMT / RIGID CONDUIT BODIES

WITHOUT COVER AND GASKET ASSEMBLED

- **APPLICATION:** Used to gain access to the interior of a raceway for wire pulling, splicing (with limitations as specified by NEC), and maintenance. Suitable for outdoor locations when protected by overhead cover.

Aluminum



Contact us for Canadian regulatory listings

	SIZE	PART #	PCS / PKG	TOTAL CTN QTY	CTN WT
<b>TYPE LL: WITHOUT COVER AND GASKET</b>					
<b>BULK</b>	1/2"	<b>57305B</b>	10 / BOX	1 BOX	
	3/4"	<b>57307B</b>	10 / BOX	1 BOX	
	1"	<b>57310B</b>	5 / BOX	1 BOX	
	1 1/4"	<b>57312B</b>	2 / BOX	1 BOX	
	1 1/2"	<b>57315B</b>	2 / BOX	1 BOX	
	2"	<b>57320B</b>	5 / BOX	1 BOX	



**TYPE: C WITHOUT COVER AND GASKET**

BULK	1/2"	<b>57905B</b>	10 / BOX	1 BOX	
	3/4"	<b>57907B</b>	10 / BOX	1 BOX	
	1"	<b>57910B</b>	5 / BOX	1 BOX	
	1 1/4"	<b>57912B</b>	2 / BOX	1 BOX	
	1 1/2"	<b>57915B</b>	2 / BOX	1 BOX	
	2"	<b>57920B</b>	5 / BOX	1 BOX	



**TYPE: LB WITHOUT COVER AND GASKET**

BULK	1/2"	<b>57605B</b>	10 / BOX	1 BOX	
	3/4"	<b>57607B</b>	10 / BOX	1 BOX	
	1"	<b>57610B</b>	5 / BOX	1 BOX	
	1 1/4"	<b>57612B</b>	2 / BOX	1 BOX	
	1 1/2"	<b>57615B</b>	2 / BOX	1 BOX	
	2"	<b>57620B</b>	5 / BOX	1 BOX	



**TYPE: T WITHOUT COVER AND GASKET**

BULK	1/2"	<b>55805B</b>	10 / BOX	1 BOX	
	3/4"	<b>55807B</b>	10 / BOX	1 BOX	
	1"	<b>55810B</b>	5 / BOX	1 BOX	
	1 1/4"	<b>55812B</b>	2 / BOX	1 BOX	
	1 1/2"	<b>55815B</b>	2 / BOX	1 BOX	
	2"	<b>55820B</b>	5 / BOX	1 BOX	



**TYPE: LR WITHOUT GASKET**

BULK	1/2"	<b>57705B</b>	10 / BOX	1 BOX	
	3/4"	<b>57707B</b>	10 / BOX	1 BOX	
	1"	<b>57710B</b>	5 / BOX	1 BOX	
	1 1/4"	<b>57712B</b>	2 / BOX	1 BOX	
	1 1/2"	<b>57715B</b>	2 / BOX	1 BOX	
	2"	<b>57720B</b>	5 / BOX	1 BOX	



## MOGUL PULLING ELBOWS - TYPE LB

Aluminum

- **APPLICATION:** Used to gain access to the interior of a raceway for wire pulling, splicing (with limitations as specified by the NEC), and maintenance. Indoors or outdoors.



Contact us for Canadian regulatory listings



	SIZE	PART #	PCS / PKG	TOTAL CTN QTY	CTN WT
BULK	1 1/4"	<b>58212B</b>	5 / BOX	1 BOX	
	1 1/2"	<b>58215B</b>	2 / BOX	1 BOX	
	2"	<b>58220B</b>	2 / BOX	1 BOX	8.46
	2 1/2"	<b>58225B</b>	1 / BOX	1 BOX	
	3"	<b>58230B</b>	1 / BOX	1 BOX	
	3 1/2"	<b>58235B</b>	1 / BOX	1 BOX	
	4"	<b>58240B</b>	1 / BOX	1 BOX	





## THREADED CONDUIT BODIES WITHOUT COVER AND GASKET

Aluminum

- **APPLICATION:** Used to gain access to the interior of a raceway for wire pulling, splicing (with limitations as specified by the NEC), and maintenance. Indoors or outdoors when gasket and cover are installed.



Contact us for Canadian regulatory listings

	SIZE	PART #	PCS / PKG	TOTAL CTN QTY	CTN WT
<b>TYPE: LB WITHOUT COVER AND GASKET</b>					
BULK	1/2"	59605B	10 / BOX	1 BOX	
	3/4"	59607B	10 / BOX	1 BOX	
	1"	59610B	5 / BOX	1 BOX	
	1 1/4"	59612B	2 / BOX	1 BOX	
	1 1/2"	59615B	2 / BOX	1 BOX	
	2"	59620B	1 / BOX	1 BOX	
	2 1/2"	59625B	1 / BOX	1 BOX	
	3"	59630B	1 / BOX	1 BOX	5.59
	3 1/2"	59635B	1 / BOX	1 BOX	11.00
	4"	59640B	1 / BOX	1 BOX	12.85



<b>TYPE: T WITHOUT COVER AND GASKET</b>					
BULK	1/2"	59805B	10 / BOX	1 BOX	
	3/4"	59807B	10 / BOX	1 BOX	
	1"	59810B	5 / BOX	1 BOX	
	1 1/4"	59812B	2 / BOX	1 BOX	
	1 1/2"	59815B	2 / BOX	1 BOX	
	2"	59820B	1 / BOX	1 BOX	
	2 1/2"	59825B	1 / BOX	1 BOX	6.94
	3"	59830B	1 / BOX	1 BOX	7.50
	3 1/2"	59835B	1 / BOX	1 BOX	
	4"	59840B	1 / BOX	1 BOX	11.53



<b>TYPE: LL WITHOUT COVER AND GASKET</b>					
BULK	1/2"	59905B	10 / BOX	1 BOX	
	3/4"	59907B	10 / BOX	1 BOX	
	1"	59910B	5 / BOX	1 BOX	
	1 1/4"	59912B	2 / BOX	1 BOX	
	1 1/2"	59915B	2 / BOX	1 BOX	
	2"	59920B	1 / BOX	1 BOX	
	2 1/2"	59925B	1 / BOX	1 BOX	3.91
	3"	59930B	1 / BOX	1 BOX	7.31
	3 1/2"	59935B	1 / BOX	1 BOX	
	4"	59940B	1 / BOX	1 BOX	10.71



# RIGID CONDUIT FITTINGS

RGD

THREADED CONDUIT BODIES WITHOUT COVER AND GASKET CONTINUED FROM PREVIOUS PAGE



	SIZE	PART #	PCS / PKG	TOTAL CTN QTY	CTN WT
<b>TYPE: LR WITHOUT COVER AND GASKET</b>					
BULK	1/2"	<b>59705B</b>	10 / BOX	1 BOX	
	3/4"	<b>59707B</b>	10 / BOX	1 BOX	
	1"	<b>59710B</b>	5 / BOX	1 BOX	
	1 1/4"	<b>59712B</b>	2 / BOX	1 BOX	
	1 1/2"	<b>59715B</b>	2 / BOX	1 BOX	
	2"	<b>59720B</b>	1 / BOX	1 BOX	
	2 1/2"	<b>59725B</b>	1 / BOX	1 BOX	3.91
	3"	<b>59730B</b>	1 / BOX	1 BOX	7.71
	3 1/2"	<b>59735B</b>	1 / BOX	1 BOX	
4"	<b>59740B</b>	1 / BOX	1 BOX	11.24	



	SIZE	PART #	PCS / PKG	TOTAL CTN QTY	CTN WT
<b>TYPE: C WITHOUT COVER AND GASKET</b>					
BULK	1/2"	<b>59405B</b>	10 / BOX	1 BOX	
	3/4"	<b>59407B</b>	10 / BOX	1 BOX	
	1"	<b>59410B</b>	5 / BOX	1 BOX	
	1 1/4"	<b>59412B</b>	2 / BOX	1 BOX	
	1 1/2"	<b>59415B</b>	2 / BOX	1 BOX	
	2"	<b>59420B</b>	1 / BOX	1 BOX	
	2 1/2"	<b>59425B</b>	1 / BOX	1 BOX	
	3"	<b>59430B</b>	1 / BOX	1 BOX	
	3 1/2"	<b>59435B</b>	1 / BOX	1 BOX	
4"	<b>59440B</b>	1 / BOX	1 BOX		

## THREADED CONDUIT BODIES WITH STAMPED COVER

Aluminum

- **APPLICATION:** Used to gain access to the interior of a raceway for wire pulling, splicing (with limitations as specified by the NEC), and maintenance. Indoors or outdoors.



Contact us for Canadian regulatory listings



	SIZE	PART #	PCS / PKG	TOTAL CTN QTY	CTN WT
<b>TYPE: LB WITH COVER</b>					
BULK	1/2"	<b>58605B</b>	10 / BOX	1 BOX	
	3/4"	<b>58607B</b>	10 / BOX	1 BOX	
	1"	<b>58610B</b>	5 / BOX	1 BOX	
	1 1/4"	<b>58612B</b>	2 / BOX	1 BOX	
	1 1/2"	<b>58615B</b>	2 / BOX	1 BOX	
	2"	<b>58620B</b>	1 / BOX	1 BOX	
	2 1/2"	<b>58625B</b>	1 / BOX	1 BOX	
	3"	<b>58630B</b>	1 / BOX	1 BOX	5.59
	3 1/2"	<b>58635B</b>	1 / BOX	1 BOX	11.00
	4"	<b>58640B</b>	1 / BOX	1 BOX	12.85

THREADED CONDUIT BODIES WITH STAMPED COVER CONTINUED FROM PREVIOUS PAGE

	SIZE	PART #	PCS / PKG	TOTAL CTN QTY	CTN WT
<b>TYPE: T WITH STAMPED COVER</b>					
<b>BULK</b>	1/2"	<b>58805B</b>	10 / BOX	1 BOX	
	3/4"	<b>58807B</b>	10 / BOX	1 BOX	
	1"	<b>58810B</b>	5 / BOX	1 BOX	
	1 1/4"	<b>58812B</b>	2 / BOX	1 BOX	
	1 1/2"	<b>58815B</b>	2 / BOX	1 BOX	
	2"	<b>58820B</b>	1 / BOX	1 BOX	3.03
	2 1/2"	<b>58825B</b>	1 / BOX	1 BOX	6.94
	3"	<b>58830B</b>	1 / BOX	1 BOX	7.50
	3 1/2"	<b>58835B</b>	1 / BOX	1 BOX	
	4"	<b>58840B</b>	1 / BOX	1 BOX	11.53



<b>TYPE: C WITH STAMPED COVER</b>					
<b>BULK</b>	1/2"	<b>58405B</b>	10 / BOX	1 BOX	
	3/4"	<b>58407B</b>	10 / BOX	1 BOX	
	1"	<b>58410B</b>	5 / BOX	1 BOX	
	1 1/4"	<b>58412B</b>	2 / BOX	1 BOX	
	1 1/2"	<b>58415B</b>	2 / BOX	1 BOX	
	2"	<b>58420B</b>	1 / BOX	1 BOX	
	2 1/2"	<b>58425B</b>	1 / BOX	1 BOX	
	3"	<b>58430B</b>	1 / BOX	1 BOX	
	3 1/2"	<b>58435B</b>	1 / BOX	1 BOX	
	4"	<b>58440B</b>	1 / BOX	1 BOX	



<b>TYPE: LR WITH STAMPED COVER</b>					
<b>BULK</b>	1/2"	<b>58905B</b>	10 / BOX	1 BOX	
	3/4"	<b>58907B</b>	10 / BOX	1 BOX	
	1"	<b>58910B</b>	5 / BOX	1 BOX	
	1 1/4"	<b>58912B</b>	2 / BOX	1 BOX	
	1 1/2"	<b>58915B</b>	2 / BOX	1 BOX	
	2"	<b>58920B</b>	1 / BOX	1 BOX	
	2 1/2"	<b>58925B</b>	1 / BOX	1 BOX	3.91
	3"	<b>58930B</b>	1 / BOX	1 BOX	7.31
	3 1/2"	<b>58935B</b>	1 / BOX	1 BOX	
	4"	<b>58940B</b>	1 / BOX	1 BOX	11.24



# RIGID CONDUIT FITTINGS

RGD

THREADED CONDUIT BODIES WITH STAMPED COVER ALUMINUM CONTINUED FROM PREVIOUS PAGE

	SIZE	PART #	PCS / PKG	TOTAL CTN QTY	CTN WT
<b>TYPE: LL WITH STAMPED COVER</b>					
<b>BULK</b>	1/2"	<b>58305B</b>	1 / BOX	1 BOX	
	3/4"	<b>58307B</b>	1 / BOX	1 BOX	
	1"	<b>58310B</b>	1 / BOX	1 BOX	
	1 1/4"	<b>58312B</b>	1 / BOX	1 BOX	
	1 1/2"	<b>58315B</b>	1 / BOX	1 BOX	
	2"	<b>58320B</b>	1 / BOX	1 BOX	
	2 1/2"	<b>58325B</b>	1 / BOX	1 BOX	3.91
	3"	<b>58330B</b>	1 / BOX	1 BOX	7.31
	3 1/2"	<b>58335B</b>	1 / BOX	BULK	
	4"	<b>58340B</b>	1 / BOX	1 BOX	10.71



## SERVICE ENTRANCE ELL

Aluminum

- APPLICATION:** Used to gain access to the interior of a raceway for wire pulling, inspections, and maintenance. Indoors or outdoors.

Contact us for Canadian regulatory listings 

	SIZE	PART #	PCS / PKG	TOTAL CTN QTY	CTN WT
<b>UPC</b>	1/2"	<b>59505</b>	1 / BOX	10 BOXES	2.16
	3/4"	<b>59507</b>	1 / BOX	5 BOXES	1.74
	1"	<b>59510</b>	1 / BOX	3 BOXES	1.46
	1 1/4"	<b>59512</b>	1 / BOX	2 BOXES	1.72
	1 1/2"	<b>59515</b>	1 / BOX	2 BOXES	1.99
	2"	<b>59520</b>	1 / BOX	1 BOX	1.49



## CONDUIT BODY COVERS

Aluminum

- APPLICATION:** Used to cover all styles of metallic conduit bodies. Indoors or outdoors.

Contact us for Canadian regulatory listings 

	SIZE	PART #	PCS / PKG	TOTAL CTN QTY	CTN WT
<b>BULK</b>	1/2"	<b>59205B</b>	50 / BOX	1 BOX	3.16
	3/4"	<b>59207B</b>	50 / BOX	1 BOX	4.16
	1"	<b>59210B</b>	50 / BOX	1 BOX	4.82
	1 1/4"-1 1/2"	<b>59215B</b>	50 / BOX	1 BOX	8.82
	2"	<b>59220B</b>	25 / BOX	1 BOX	7.37
	3"	<b>59230B</b>	10 / BOX	1 BOX	
	4"	<b>59240B</b>	5 / BOX	1 BOX	



## CONDUIT BODY GASKETS

Neoprene

- APPLICATION:** Used in conjunction with cover to provide a dust-tight seal to all types of metallic conduit bodies. Indoors or outdoors.

Contact us for Canadian regulatory listings 

	SIZE	PART #	PCS / PKG	TOTAL CTN QTY	CTN WT
<b>BULK</b>	1/2"	<b>59105B</b>	25 / BOX	1 BOX	0.36
	3/4"	<b>59107B</b>	25 / BOX	1 BOX	0.36
	1"	<b>59110B</b>	25 / BOX	1 BOX	0.36
	1 1/4" - 1 1/2"	<b>59115B</b>	20 / BOX	1 BOX	0.56
	2"	<b>59120B</b>	20 / BOX	1 BOX	1.32
	2 1/2" - 3"	<b>59130B</b>	10 / BOX	1 BOX	0.87
	3 1/2" - 4"	<b>59140B</b>	10 / BOX	1 BOX	1.06





**HALEX**

BEYOND THE CURRENT



- Straps..... 76
- Water-Tight  
Connectors..... 76
- Service  
Entrance Caps..... 77
- Straps, Reducers,  
and Supports ..... 80
- Brackets, Bolts  
and Wireholders..... 80
- ELL, Clamps  
Connectors,  
Flashings and  
Pane Washers..... 82

## SERVICE ENTRANCE FITTINGS

1.800.749.3261  
[halexco.com](http://halexco.com)

## ONE-HOLE GROUNDED STRAPS

Steel

- **APPLICATION:** Use to secure bare solid copper wire to a working surface. Indoors or outdoors.



Contact us for Canadian regulatory listings



	SIZE	PART #	PCS / PKG	TOTAL CTN QTY	CTN WT
UPC	3/16"	<b>26212</b>	50 / BAG	20 BAGS	2.58
	1/4"	<b>26214</b>	50 / BAG	10 BAGS	2.72

## ONE-HOLE STRAPS (SE & SEU CABLE)

Steel

- **APPLICATION:** Use to secure service entrance cable to a wood, masonry or similar surface. Indoors or outdoors. For insulated wire.



Contact us for Canadian regulatory listings



	SIZE	PART #	PCS / PKG	TOTAL CTN QTY	CTN WT
BULK	#12/2 - #14/2	<b>62171B</b>	100 / BOX	10 BOXES	13.83
	3#8 - 3#4	<b>62191B</b>	100 / BOX	10 BOXES	21.83
	3#3 - 3#2	<b>62192B</b>	100 / BOX	10 BOXES	23.43
	3#1 - 3#2/0	<b>62193B</b>	25 / BOX	10 BOXES	19.33
	3#3/0 - 3#4/0	<b>62194B</b>	25 / BOX	10 BOXES	22.25

## TWO-HOLE STRAPS (SE & SEU CABLE)

Steel

- **APPLICATION:** Use to secure service entrance cable (SEU, SER) to a wood, masonry or similar surface. Indoors or outdoors. For insulated wire.



Contact us for Canadian regulatory listings



	SIZE	PART #	PCS / PKG	TOTAL CTN QTY	CTN WT
BULK	3#8 - 3#4	<b>62291B</b>	100 / BOX	10 BOXES	22.25
	3#3 - 3#2	<b>62292B</b>	100 / BOX	1 BOX	22.25
	3#1 - 3#2/0	<b>62293B</b>	25 / BOX	1 BOX	6.83
	3#3/0 - 3#4/0	<b>62294B</b>	5 / BOX	1 BOX	

## WATER-TIGHT CONNECTORS

*Zinc Die Cast*

- **APPLICATION:** Use to secure SE/SEU cable to a metal enclosure. Use to connect UF cable to a waterproof box with threaded hub. Indoors or outdoors. The SIZE column below includes the gauge size for each part number



Contact us for Canadian regulatory listings

	SIZE	PART #	PCS / PKG	TOTAL CTN QTY	CTN WT
BULK	1/2"	<b>06605B</b>	25 / BOX	10 BOXES	25.83
	3/4"/#12-3	<b>06607B</b>	25 / BOX	10 BOXES	37.83
	3/4" 14/2-12/2	<b>67607B</b>	25 / BOX	1 BOX	
	3/4" 14/3- 10/3	<b>67707B</b>	25 / BOX	1 BOX	
	1" / 3#4	<b>07310B</b>	10 / BOX	10 BOXES	19.91
	1" / 3#6	<b>07210B</b>	10 / BOX	1 BOX	
	1" / 3#8	<b>07410B</b>	10 / BOX	1 BOX	
	1 1/4" / 3#3	<b>08112B</b>	10 / BOX	10 BOXES	31.91
	1 1/4" / 3#2	<b>08212B</b>	10 / BOX	10 BOXES	40.93
	1 1/4" / 3#1	<b>07412B</b>	2 / BOX	1 BOX	
	1 1/2" / 3#2/0	<b>07415B</b>	10 / BOX	1 BOX	
	1 1/2" / 3#1/0	<b>09115B</b>	5 / BOX	1 BOX	
	2" / 3#2/0	<b>10220B</b>	5 / BOX	10 BOXES	46.01
	2" / 3#4/0	<b>10420B</b>	5 / BOX	10 BOXES	45.51
	2" / 3#4/0	<b>10520B</b>	5 / BOX	10 BOXES	45.51
	2" / 3#1/0	<b>07420B</b>	5 / BOX	1 BOX	



## SERVICE ENTRANCE CAPS - CLAMP TYPE

*Aluminum*

- **APPLICATION:** Use in an overhead service entrance. Mounts on top of EMT, Rigid, or IMC conduit. Indoors or outdoors.



Contact us for Canadian regulatory listings

	SIZE	PART #	PCS / PKG	TOTAL CTN QTY	CTN WT
BULK	1/2"	<b>58005B</b>	10 / BOX	1 BOX	
	3/4"	<b>58007B</b>	10 / BOX		
	1"	<b>58010B</b>	5 / BOX		
	1 1/4"	<b>58012B</b>	5 / BOX	1 BOX	2.92
	1 1/2"	<b>58015B</b>	3 / BOX		
	2"	<b>58020B</b>	5 / BOX	1 BOX	7.08
	2 1/2"	<b>58025B</b>	1 / BOX	1 BOX	
	3"	<b>58030B</b>	1 / BOX	1 BOX	4.84
	3 1/2"	<b>58035B</b>	1 / BOX	1 BOX	7.20
	4"	<b>58040B</b>	1 / BOX	1 BOX	7.20





### OVAL SERVICE ENTRANCE CAPS

Aluminum

- **APPLICATION:** Use in overhead services that utilize SEU cable. Indoors or outdoors.

  
Contact us for Canadian regulatory listings

	SIZE	PART #	PCS / PKG	TOTAL CTN QTY	CTN WT
BULK	3#8 - #1	<b>57499B</b>	20 / BOX	1 BOX	
	3#1/0 - 4/0	<b>57699B</b>	10 / BOX	1 BOX	



### OVAL SERVICE ENTRANCE CABLE HOODS

PVC

- **APPLICATION:** Use in overhead services that utilize SEU cable. Indoors or outdoors.

	SIZE	PART #	PCS / PKG	TOTAL CTN QTY	CTN WT
BULK	3#3 - 1	<b>77631B</b>	25 / BOX		
	3#2/0 - 4/0	<b>77702B</b>	25 / BOX		



### OVAL SERVICE ENTRANCE CAPS

PVC

- **APPLICATION:** Use in overhead services that utilize SEU cable. Indoors or outdoors.

  
Contact us for Canadian regulatory listings

	SIZE	PART #	PCS / PKG	TOTAL CTN QTY	CTN WT
BULK	3#2/0 - #4/0	<b>77902B</b>	10 / BOX	1 BOX	
	#2/3	<b>77906B</b>	30 / BOX	1 BOX	



### SERVICE ENTRANCE CAPS - SET SCREW TYPE

Aluminum

- **APPLICATION:** Use in an overhead service entrance. Mounts on top of EMT, Rigid, or IMC conduit. Indoors or outdoors.

  
Contact us for Canadian regulatory listings

	SIZE	PART #	PCS / PKG	TOTAL CTN QTY	CTN WT
BULK	2 1/2"	<b>57925B</b>	10 / BOX	1 BOX	



### PVC SERVICE ENTRANCE CAPS

PVC

- **APPLICATION:** Use in overhead service entrance. Mounts on top of PVC conduit. Serves as connecting point for service entrance wires. Outdoors.

  
Contact us for Canadian regulatory listings

	SIZE	PART #	PCS / PKG	TOTAL CTN QTY	CTN WT
UPC	1"	<b>77910</b>	1 / BOX	5 BOXES	1.28
	2"	<b>77920</b>	1 / BOX	2 BOXES	2.32



## SILL PLATES

*Aluminum*

- APPLICATION:** In conjunction with sealing compound, use to protect the service entrance cable and cover the hole where it enters the dwelling. Outdoors only. The SIZE column below includes the gauge size for each part number.

	SIZE	PART #	PCS / PKG	TOTAL CTN QTY	CTN WT
BULK	0/4	<b>50504B</b>	20 / BOX	1 BOX	
	1/2" - 3/4"	<b>50505B</b>	10 / BOX	1 BOX	
	1" 3/3	<b>50510B</b>	10 / BOX	1 BOX	
	1 1/4" 3/2	<b>50512B</b>	25 / BOX	1 BOX	
	1 1/2"	<b>50515B</b>	25 / BOX	1 BOX	
	2"	<b>50520B</b>	25 / BOX	1 BOX	



## CLAMP CONNECTORS - SERVICE ENTRANCE

*Zinc Die Cast*

- APPLICATION:** In a dry location, use to connect oval service cable to steel outlet box or other metal enclosure. Indoors only.



Contact us for Canadian regulatory listings

	SIZE	PART #	PCS / PKG	TOTAL CTN QTY	CTN WT
BULK	1"	<b>05310B</b>	12 / BOX	1 BOX	
	1 1/4"	<b>05312B</b>	10 / BOX	10 BOXES	21.49
	1 1/2"	<b>05315B</b>	5 / BOX	10 BOXES	11.64
	2"	<b>05320B</b>	10 / BOX	4 BOXES	18.88



## KENNY CLAMPS

*Bronze*

- APPLICATION:** Ensures code compliance for grounding electrode conductors installations. Indoors only.



Contact us for Canadian regulatory listings

	SIZE	PART #	PCS / PKG	TOTAL CTN QTY	CTN WT
BULK	1/2" 1/0	<b>38001B</b>	10 / BOX	1 BOX	
	1/2" 2/0	<b>38002B</b>	10 / BOX	1 BOX	
	1/2" 3/0	<b>38003B</b>	10 / BOX	1 BOX	
	1/2" 2	<b>38020B</b>	10 / BOX	1 BOX	
	1/2" 4	<b>38041B</b>	10 / BOX	1 BOX	
	1/2" 6	<b>38061B</b>	10 / BOX	1 BOX	
	1/2" 8	<b>38081B</b>	10 / BOX	1 BOX	
	1/2" 4	<b>38040B</b>	10 / BOX	1 BOX	
	1/2" 6	<b>38060B</b>	10 / BOX	1 BOX	
	1/2" 8	<b>38080B</b>	10 / BOX	1 BOX	





## OFFSET BOTTOM REDUCERS

Aluminum



- **APPLICATION:** Use to connect Rigid or IMC conduit to a metal base hub. Indoors or outdoors.

Contact us for Canadian regulatory listings

	SIZE	PART #	PCS / PKG	TOTAL CTN QTY	CTN WT
BULK	2"	<b>50920B</b>	50 / BOX	1 BOX	
	2 1/2"	<b>50925B</b>	25 / BOX	1 BOX	

## CONDUIT SUPPORTS (LAG SCREW)

Malleable Iron



- **APPLICATION:** Use to secure SE conduit to surface of building. Indoors or outdoors.

	SIZE	PART #	PCS / PKG	TOTAL CTN QTY	CTN WT
BULK	2"	<b>51320B</b>	25 / BOX	1 BOX	
	2 1/2"	<b>51325B</b>	25 / BOX	1 BOX	

## CONDUIT SUPPORTS (BOLT NUT WASHER)

Malleable Iron



- **APPLICATION:** Use to secure service entrance conduit to the surface of a building. Indoors or outdoors.

	SIZE	PART #	PCS / PKG	TOTAL CTN QTY	CTN WT
BULK	2"	<b>33520B</b>	25 / BOX	1 BOX	
	2 1/2"	<b>33525B</b>	25 / BOX	1 BOX	

## SERVICE DROP BRACKETS

Steel



- **APPLICATION:** Use to secure service entrance pipe to the house. Outdoors.

	SIZE	PART #	PCS / PKG	TOTAL CTN QTY	CTN WT
UPC	19/32"	<b>58050</b>	1 / BOX	10 BOXES	19.28

## FORK BOLTS

Steel



- **APPLICATION:** Used to secure service entrance cables to a structure. Outdoors only.

	SIZE	PART #	PCS / PKG	TOTAL CTN QTY	CTN WT
UPC	12" Bolt	<b>58060</b>	1 / BOX	4 BOXES	6.63

## ADJUSTABLE PORCELAIN WIREHOLDER

Porcelain

- APPLICATION:** Use as a holding device for the incoming service entrance wires. Mounts below the overhead service entrance cap. Holds less than 100 lbs. Indoors or outdoor.

	SIZE	PART #	PCS / PKG	TOTAL CTN QTY	CTN WT
<b>BULK</b>	1 1/4" - 3"	<b>60525B</b>	20 / BOX	1 BOX	



## PORCELAIN WIREHOLDERS

Porcelain

- APPLICATION:** Use in overhead services to secure the incoming service entrance wires. SIZE column indicated length of the screw. Indoors or outdoors.

	SIZE	PART #	PCS / PKG	TOTAL CTN QTY	CTN WT
<b>LIGHT DUTY</b>					
<b>BULK</b>	1 11/16"	<b>60416B</b>	10 / BOX	1 BOX	
<b>MEDIUM DUTY</b>					
<b>BULK</b>	2 1/4"	<b>60322B</b>	50 / BOX	1 BOX	
<b>HEAVY DUTY</b>					
<b>BULK</b>	2 1/4"	<b>60222B</b>	25 / BOX	1 BOX	
<b>HEAVY DUTY WITH PIPE HANGER</b>					
<b>BULK</b>	2"	<b>60646B</b>	25 / BOX	1 BOX	



## SERVICE CLEVIS

Porcelain

- APPLICATION:** Used to dead-end service entrance drops at either end. Holds up to 500 lbs. Indoors or outdoors.

	SIZE	PART #	PCS / PKG	TOTAL CTN QTY	CTN WT
<b>UPC</b>	3/16" x 3"	<b>60625</b>	1 / BOX	1 BOX	4.01



## SERVICE ENTRANCE ELL

Aluminum

- APPLICATION:** Use to gain access to the interior of a raceway for wire pulling, inspections, and maintenance. Indoors or outdoors.



Contact us for Canadian regulatory listings

	SIZE	PART #	PCS / PKG	TOTAL CTN QTY	CTN WT
<b>BULK</b>	1/2"	<b>59505B</b>	10 / BOX	1 BOX	
	3/4"	<b>59507B</b>	10 / BOX	1 BOX	
	1"	<b>59510B</b>	5 / BOX	1 BOX	
	1 1/4"	<b>59512B</b>	2 / BOX	1 BOX	
	1 1/2"	<b>59515B</b>	1 / BOX	1 BOX	
	2"	<b>59520B</b>	1 / BOX	1 BOX	



# SERVICE ENTRANCE FITTINGS

SE



## LONG SERVICE ENTRANCE ELLS-SLB

Aluminum



- **APPLICATION:** Use to gain access to the interior of a raceway for wire pulling, inspections, and maintenance. Indoors or outdoors.

Contact us for Canadian regulatory listings

	SIZE	PART #	PCS / PKG	TOTAL CTN QTY	CTN WT
BULK	1 1/4"	<b>59513B</b>	2 / BOX	1 BOX	
	2"	<b>59521B</b>	1 / BOX	1 BOX	

## WEDGE CLAMP CONNECTORS

Aluminum

- **APPLICATION:** Use to connect a triplex overhead service entrance cable to a mounting device or building. Indoors or outdoors. In order of parts: 300 lbs, 400 lbs, 500 lbs.



	SIZE	PART #	PCS / PKG	TOTAL CTN QTY	CTN WT
BULK	6 - 2	<b>51061B</b>	50 / BOX	1 BOX	
	4 - 1/0	<b>51062B</b>	25 / BOX	1 BOX	
	2/0-4/0	<b>51063B</b>	25 / BOX	1 BOX	

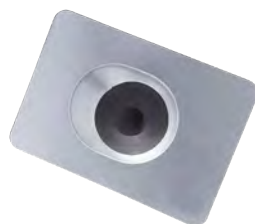
## ROOF FLASHINGS

Steel



- **APPLICATION:** Use to prevent water leaks in overhead services where conduit mast penetrates the roof surface. Outdoors.

Contact us for Canadian regulatory listings



	SIZE	PART #	PCS / PKG	TOTAL CTN QTY	CTN WT
BULK	1 1/4"	<b>60812B</b>	25 / BOX	1 BOX	
	1 1/2"	<b>60815B</b>	25 / BOX	1 BOX	
	2"	<b>60820B</b>	25 / BOX	1 BOX	
	2 1/2"	<b>60825B</b>	25 / BOX	1 BOX	

## ROOF FLASHINGS

Neoprene



- **APPLICATION:** Use to prevent water leaks in overhead services where conduit mast penetrates the roof surface. Outdoors.

Contact us for Canadian regulatory listings



	SIZE	PART #	PCS / PKG	TOTAL CTN QTY	CTN WT
BULK	1 1/4"	<b>20815B</b>	12 / BOX	1 BOX	
	2"	<b>20820B</b>	20 / BOX	1 BOX	
	2 1/2"	<b>20825B</b>	6 / BOX	1 BOX	
	3"	<b>20830B</b>	6 / BOX	1 BOX	

## ELECTRIC PANE WASHERS

Steel

- **APPLICATION:** Used to secure a panel to a wall. Indoors only.



	SIZE	PART #	PCS / PKG	TOTAL CTN QTY	CTN WT
UPC	1 1/4" Diameter	<b>96312</b>	1 / BAG	10 BAGS	0.93



- *Cable Staples* ..... 84
- *Plastic Insulating Staples* ..... 84
- *Strain Relief Cord Connector*..... 84
- *Non-Metallic Strain Relief Cord Connector*..... 84
- *Switch Box Supports* .... 85
- *Snap In Bushings*..... 85
- *Nail Plate*..... 86
- *Jack Chain* ..... 86
- *"S" Hook* ..... 86
- *"Sky Tie" Cable Clamps* ..... 86
- *Extension Springs* ..... 87
- *Duct Seal* ..... 87
- *Fixture Hangers* ..... 87
- *Conduit Hangers* ..... 87
- *SPEED THREAD* ..... 87
- *Beam Clamps* ..... 88

## ACCESSORIES

## CABLE STAPLES FOR SEU AND RANGE CABLE

Steel

- **APPLICATION:** Use to secure non-metallic sheathed, armored or SEU cable to wood surfaces. Indoors only.



	SIZE	PART #	PCS / PKG	TOTAL CTN QTY	CTN WT
BULK	#14 to #12-2	<b>61010</b>	100 / BOX	1 BOX	1.00
	#14 to #12-2	<b>61050</b>	500 / BOX	1 BOX	4.00
	#14 ro #10-3	<b>62510</b>	100 / BOX	1 BOX	2.00

## PLASTIC INSULATING STAPLES

Plastic with Steel Nails

- **APPLICATION:** Use to secure non-metallic sheathed cable or UF cable to wood surfaces. Indoors only.



<sup>1</sup> NM cable #14 - #12 and UF cable #14/2 - #12/2  
<sup>2</sup> NM cable #10/2 - #8/2 and UF cable #10/2 - #8/2; #14/3 - #12/3

Contact us for Canadian regulatory listings



	SIZE	PART #	PCS / PKG	TOTAL CTN QTY	CTN WT
UPC	1/2"	<b>27209<sup>1</sup></b>	50 / BAG	25 BAGS	7.66
	3/4"	<b>27309<sup>2</sup></b>	50 / BAG	25 BAGS	8.40

## STRAIN RELIEF CORD CONNECTOR

Zinc Die Cast

- **APPLICATION:** Use to connect S, SO, ST, SJ, SJO, and SJT cord to a steel outlet box or other metal enclosure. For round ca ble. Indoors only.



Fits wire range: .220 - .260 1      Fits wire range: . 500 - . 625 7  
 Fits wire range: .300 - .375 2      Fits wire range: . 580 - . 625 8  
 Fits wire range: .375 - .500 3      Fits wire range: . 625 - . 750 9  
 Fits wire range: .400 - .500 4      Fits wire range: . 630 - . 720 10  
 Fits wire range: .440 - .500 5      Fits wire range: . 650 - . 740 11  
 Fits wire range: .450 - .500 6      Fits wire range: . 750 - . 850 12

Contact us for Canadian regulatory listings



	SIZE	PART #	PCS / PKG	TOTAL CTN QTY	CTN WT
BULK	1/2"	<b>16911B<sup>1</sup></b>	25 / BOX	10 BOXES	22.83
	1/2"	<b>16912B<sup>2</sup></b>	25 / BOX	10 BOXES	22.83
	1/2"	<b>16913B<sup>2</sup></b>	25 / BOX	10 BOXES	26.08
	3/4"	<b>16921B<sup>6</sup></b>	1 / BOX	10 BOXES	33.75
	3/4"	<b>19623B<sup>1</sup></b>	25 / BOX	10 BOXES	33.75
	1"	<b>16933B<sup>10</sup></b>	10 / BOX	10 BOXES	20.01
	1"	<b>16934B<sup>12</sup></b>	10 / BOX	10 BOXES	36.25

## NON-METALLIC STRAIN RELIEF CORD CONNECTOR

PVC

- **APPLICATION:** Used to connect cord to a steel outlet box or other metal enclosure. For round cable. Indoor and outdoor. Liquid tight.



1 Fits wire range: .235 - .400  
 2 Fits wire range: .410 - .740

Contact us for Canadian regulatory listings



	SIZE	PART #	PCS / PKG	TOTAL CTN QTY	CTN WT
BULK	1/2"	<b>76913B<sup>1</sup></b>	25 / BOX	1 BOX	2.06
	3/4"	<b>16921B</b>	1 / BOX	1 BOX	
	3/4"	<b>76923B<sup>2</sup></b>	10 /BOX	1 BOX	1.68

## KNOCKOUT SEALS

Steel

- APPLICATION:** Use to cover exposed knockout holes in steel outlet boxes and other metal enclosures. Indoors only.

	SIZE	PART #	PCS / PKG	TOTAL CTN QTY	CTN WT
CCP	1/2"	<b>60704B</b>	150 / CCP	4 CCP's	2.28
	3/4"	<b>60797B</b>	100 / CCP	4 CCP's	2.30
BULK	1/2"	<b>60705B</b>	250 / BOX	4 BOXES	3.16
	3/4"	<b>60707B</b>	250 / BOX	4 BOXES	5.66
	1"	<b>60710B</b>	50 / BOX	10 BOXES	1.84
	1 1/4"	<b>60712B</b>	50 / BOX	1 BOX	
	1 1/2"	<b>60715B</b>	50 / BOX	1 BOX	
	2"	<b>60720B</b>	10 / BOX	1 BOX	



## 3-PIECE KNOCKOUT SEALS

Steel

- APPLICATION:** Use to cover exposed knockout holes in steel outlet boxes and other metal enclosures. Indoors only.

	SIZE	PART #	PCS / PKG	TOTAL CTN QTY	CTN WT
CCP	1/2"	<b>60605B</b>	75 / CCP	4 CCP's	7.4
	3/4"	<b>60607B</b>	50 / CPP	4 CCP's	6.6
	1/2"	<b>60610B</b>	50 / CCP	4 CCP's	9.0
	1 1/4"	<b>60612B</b>	25 / CCP	4 CCP's	1.4
BULK	1 1/4"	<b>60615B</b>	1 / BOX	20 BOXES	1.8
	3/4"	<b>60707B</b>	1 / BOX	20 BOXES	1.4



## SWITCH BOX SUPPORTS

Steel

- APPLICATION:** Use to support attachment of an outlet box in drywall in the absence of a structure member. Indoors only.

	SIZE	PART #	PCS / PKG	TOTAL CTN QTY	CTN WT
BULK	-	<b>62700B</b>	500 PAIRS / BOX	1 BOX	



## SNAP-IN BUSHINGS

Plastic

- APPLICATION:** Use to protect non-metallic cable from damage when running cable through metal studs. Indoors only.

	SIZE	PART #	PCS / PKG	TOTAL CTN QTY	CTN WT
BULK	1/2"	<b>72505B</b>	100 / BOX	1 BOX	1.34
	3/4"	<b>72507B</b>	100 / BOX	1 BOX	1.59
	1"	<b>72510B</b>	100 / BOX	1 BOX	1.49
	1 1/2"	<b>72515B</b>	100 / BOX	1 BOX	0.64
	2"	<b>72520B</b>	25 / BOX	1 BOX	1.23



## UNIVERSAL SNAP-IN BUSHINGS

*Polypropylene*



- APPLICATION:** Use to protect non-metallic cable from damage when running cable through metal studs. Indoors only.



Contact us for Canadian regulatory listings

	SIZE	PART #	PCS / PKG	TOTAL CTN QTY	CTN WT
<b>BULK</b>	Universal	<b>276972</b>	25 / BOX	10 BOXES	1.67

## NAIL PLATES

*Steel*



- APPLICATION:** Use to protect internal wire runs from nail punctures. Indoors only. Plate thickness 0.06"

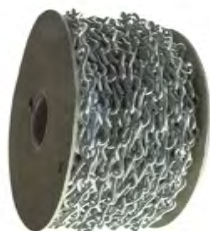


Contact us for Canadian regulatory listings

	SIZE	PART #	PCS / PKG	TOTAL CTN QTY	CTN WT
<b>CCP</b>	1 1/2" x 2 1/2"	<b>62897</b>	200 / CCP	4 CCP's	14.13
	1 1/2" x 2 1/2"	<b>62899</b>	50 / CCP	4 CCP's	4.32
<b>BULK</b>	1 1/2" x 2 1/2"	<b>62897B</b>	200 / BOX	1 BOX	
	1 1/2" x 5"	<b>62851B</b>	100 / BOX	1 BOX	12.28

## JACK CHAIN

*Steel*



- APPLICATION:** Supports up to 29lbs. Sold by the foot.

	SIZE	PART #	PCS / PKG	TOTAL CTN QTY	CTN WT
<b>BULK</b>	12GA	<b>60010</b>	100FT / BOX	1 SPOOL	9.20
	10GA	<b>60020</b>	100FT / BOX	1 SPOOL	15.05

## "S" HOOK

*Steel*



- APPLICATION:** Use to suspend light fixtures. Indoors only.

	SIZE	PART #	PCS / PKG	TOTAL CTN QTY	CTN WT
<b>BULK</b>	12GA	<b>60199</b>	100 / BOX	1 BOX	0.94

## "SKY TIE" CABLE CLAMPS

*Steel*



- APPLICATION:** Supports and anchors bus-drop cable at a 90 degree angle.

	SIZE	PART #	PCS / PKG	TOTAL CTN QTY	CTN WT
<b>BULK</b>	1 1/8" - 1 11/16"	<b>25716B</b>	5 / BOX	1 BOX	8.15
	1/2" - 3/4"	<b>66207B</b>	10 / BOX	1 BOX	4.45
	3/4" - 1 1/8"	<b>66211B</b>	10 / BOX	1 BOX	8.20



## EXTENSION SPRINGS

Steel

- **APPLICATION:** Use to suspend "Sky-Tie" cable to clamp. Indoors only.

	SIZE	PART #	PCS / PKG	TOTAL CTN QTY	CTN WT
BULK	10 - 60 LBS	<b>66377B</b>	10 / BOX	1 BOX	2.20
	10 - 70 LBS	<b>66388B</b>	10 / BOX	1 BOX	2.70
	25 - 200 LBS	<b>66399B</b>	5 / BOX	1 BOX	5.23



## DUCT SEAL

Steel

- **APPLICATION:** Use to seal around junction boxes, flashings, and service entrance locations. Indoors or outdoors.

	SIZE	PART #	PCS / PKG	TOTAL CTN QTY	CTN WT
BULK	1 LB	<b>79910B</b>	1 / BOX	1 BOX	1.00
	5 LB	<b>79950B</b>	1 / BOX	1 BOX	



## FIXTURE HANGERS

Steel

- **APPLICATION:** Use to secure and suspend light fixture. Indoors or outdoors

	SIZE	PART #	PCS / PKG	TOTAL CTN QTY	CTN WT
BULK	4"	<b>69699B</b>	25 / BOX	1 BOX	16.70



## CONDUIT HANGERS

Steel

- **APPLICATION:** Use to secure and suspend conduit from overhead supports. Indoors or outdoors. Faster and easy installation, captive screw is included. Indoors or outdoors. Refer to chart below to match the appropriate conduit size with the corresponding product trade size.



Contact us for Canadian regulatory listings



	SIZE	PART #	PCS / PKG	TOTAL CTN QTY	CTN WT	CONDUIT SIZE	
						EMT	RGD
BULK	#0	<b>67800B</b>	100 / BOX	1 BOX	7.39	1/2"	1/2"
	#1	<b>67810B</b>	100 / BOX	1 BOX	8.09	3/4"	3/4"
	#2	<b>67820B</b>	100 / BOX	1 BOX	10.32	1"	1"
	#2	<b>67821B</b>	100 / BOX	1 BOX	10.30		
	#2 1/2	<b>67825B</b>	100 / BOX	1 BOX			
	#3	<b>67830B</b>	100 / BOX	1 BOX	11.56	1 1/2"	1 1/2"
	#4	<b>67840B</b>	100 / BOX	1 BOX	13.99		1 1/2"
	#5	<b>67850B</b>	50 / BOX	1 BOX	10.37	2"	2"
	#6	<b>67860B</b>	50 / BOX	1 BOX	18.11	2 1/2"	2 1/2"
	#7	<b>67870B</b>	50 / BOX	1 BOX	20.41	3 1/2"	3 1/2"
	#8	<b>67880B</b>	25 / BOX	1 BOX	10.99		
#9	<b>67890B</b>	10 / BOX	1 BOX	6.04	4"	4"	



## SPEED THREAD™

### CONDUIT HANGERS SPEED THREAD

Steel



Contact us for Canadian regulatory listings

- **APPLICATION:** Use to secure and suspend conduit from overhead supports. Faster and easy installation, captive screw is included. Indoors or outdoors. Refer to chart below to match the appropriate conduit size with the corresponding product trade size.

CONDUIT SIZE

	SIZE	PART #	PCS / PKG	TOTAL CTN QTY	CTN WT	EMT	RGD
CCP	0	67801B	45 / CCP	4 CCP's	4.24	1/2"	1/2"
	2	67822B	25 / CCP	4 CCP's	3.52	1"	1"



### BEAM CLAMPS

Steel



Contact us for Canadian regulatory listings

- **APPLICATION:** Use to secure conduit to a metal beam. Indoors or outdoors.

	OPENING / THREAD SIZE	PART #	PCS / PKG	TOTAL CTN QTY	CTN WT
BULK	.59" / 1/4-20	65600B	25 / BOX	1 BOX	4.09
	1"	65610B	100	1 BOX	



### BEAM CLAMPS

Malleable Iron



Contact us for Canadian regulatory listings

- **APPLICATION:** Use to secure conduit to a metal beam. Indoors or outdoors.

	OPENING / THREAD SIZE	PART #	PCS / PKG	TOTAL CTN QTY	CTN WT
BULK	0.79" / 1/4 - 20	35600B	25 / BOX	1 BOX	6.49
	1.00" / 3/8 -16	35610B	10 / BOX	1 BOX	7.23
	3/4"	35607B	50 / BOX	1 BOX	
	7/8"	35608B	50 / BOX	1 BOX	
	1 1/8"	35611B	25 / BOX	1 BOX	



- *Ground Clamps* ..... 90-92
- *Ground Screws* ..... 92
- *Ground Wires* ..... 92
- *Ground Clips* ..... 93
- *Split Bolt  
Connectors* ..... 93
- *Solderless  
Terminal Lugs* ..... 93

## **GROUND FITTINGS**



### GROUND CLAMPS (BARE WIRE)

Bronze

- APPLICATION:** Use to secure bare copper ground wire to 3/8" rebar through 1" pipe. Indoors or outdoors.



Contact us for Canadian regulatory listings

	SIZE	PART #	PCS / PKG	TOTAL CTN QTY	CTN WT
BULK	3/8" - 1"	<b>36910B</b>	100 / BOX	1 BOX	27.37



### GROUND CLAMPS (BARE WIRE)

Bronze

- APPLICATION:** Use to secure the bare copper ground wire to a 1/2" through 1" pipe. Indoors or outdoors.



Contact us for Canadian regulatory listings

	SIZE	PART #	PCS / PKG	TOTAL CTN QTY	CTN WT
BULK	1/2" - 1"	<b>36010B</b>	25 / BOX	10 BOXES	47.13



### GROUND CLAMPS (BARE WIRE)

Bronze

- APPLICATION:** Use to secure the bare copper ground wire to a 1 1/4" through 2" pipe. Indoors or outdoors.



Contact us for Canadian regulatory listings

	SIZE	PART #	PCS / PKG	TOTAL CTN QTY	CTN WT
BULK	1 1/4" - 2"	<b>36020B</b>	25 / BOX	1 BOX	10.57



### GROUND CLAMPS (BARE WIRE)

Bronze

- APPLICATION:** Use to secure the bare copper ground wire to a 1 1/4" through 2" pipe. Indoors or outdoors.



Contact us for Canadian regulatory listings

	SIZE	PART #	PCS / PKG	TOTAL CTN QTY	CTN WT
UPC	1 1/4" - 2"	<b>36029</b>	1 / BOX	25 BOXES	10.78

GROUND CLAMPS (ARMORED CABLE)

Bronze

- **APPLICATION:** Use to secure the grounding wire to a 1/2" through 1" pipe. Indoors or outdoors.



Contact us for Canadian regulatory listings



	SIZE	PART #	PCS / PKG	TOTAL CTN QTY	CTN WT
UPC	1/2" - 1"	36110	1 / BAG	15 BAGS	3.69

GROUND CLAMPS (BARE WIRE) - FOR DIRECT BURIAL

Bronze

- **APPLICATION:** Use to secure the bare copper ground wire to a 1/2" through 1" pipe. Indoors or outdoors. Embedded in concrete.



Contact us for Canadian regulatory listings



	SIZE	PART #	PCS / PKG	TOTAL CTN QTY	CTN WT
UPC	1/2" - 1"	36019	1 / BAG	15 / BAGS	2.97

GROUND CLAMPS (ARMORED CABLE)

Bronze

- **APPLICATION:** Use to secure the bare copper ground wire to a 1/2" through 1" pipe. Indoors or outdoors. Embedded in concrete.



Contact us for Canadian regulatory listings



	SIZE	PART #	PCS / PKG	TOTAL CTN QTY	CTN WT
UPC	1/2" - 1"	36110	1 / BAG	15 BAGS	3.69

GROUND CLAMPS (BARE WIRE)

Zinc

- **APPLICATION:** Use to secure the bare copper ground wire to a 1/2" through 1" pipe. Indoors or outdoors.



Contact us for Canadian regulatory listings



	SIZE	PART #	PCS / PKG	TOTAL CTN QTY	CTN WT
BULK	1/2" - 1"	16010B	25 / BOX	10 BOXES	49.43

GROUND CLAMPS (ARMORED CABLE)

Zinc

- **APPLICATION:** Use to secure the grounding wire to a 1/2" through 1" pipe. Indoors or outdoors.



Contact us for Canadian regulatory listings



	SIZE	PART #	PCS / PKG	TOTAL CTN QTY	CTN WT
UPC	1/2" - 1"	16110	1 / BAG	15 BAGS	3.25

### GROUND ROD CLAMPS

Bronze



- **APPLICATION:** Use to connect bare copper ground wire to a drive ground rod. Indoors or outdoors.

Contact us for Canadian regulatory listings



	SIZE	PART #	PCS / PKG	TOTAL CTN QTY	CTN WT
BULK	1/2"	<b>35905B</b>	50 / BOX	10 BOXES	66.83
	5/8"	<b>35906B</b>	50 / BOX	10 BOXES	50.97

### GROUND SCREWS

Steel

- **APPLICATION:** Use to ground a wiring device to a steel outlet box.



	SIZE	PART #	PCS / PKG	TOTAL CTN QTY	CTN WT
BULK	#10-32	<b>63299</b>	100 / BOX	10 BOXES	5.39

### GROUND WIRES

Copper

- **APPLICATION:** Use to ground the branch wire to the wall of a steel outlet box.

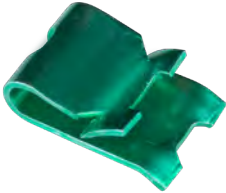


	SIZE	PART #	PCS / PKG	TOTAL CTN QTY	CTN WT
BULK	#14 AWG SOL	<b>63188</b>	100 / BOX	1 BOX	1.3

## GROUND CLIPS

Steel

**APPLICATION:** Use to connect the grounding wire to the sidewall of a steel outlet box.



	SIZE	PART #	PCS / PKG	TOTAL CTN QTY	CTN WT
<b>BULK</b>	#14 - #12	<b>63099</b>	100 / BOX	10 BOXES	4.23

## SPLIT BOLT CONNECTORS

Copper

- APPLICATION:** Used to join two copper conductors together when tapping, splicing or terminating. Indoors or outdoors.

  
Contact us for Canadian regulatory listings




	SIZE	PART #	PCS / PKG	TOTAL CTN QTY	CTN WT
<b>BULK</b>	16 STR - 8 STR	<b>32408B</b>	100 / BOX	1 BOX	3.11
	6 SOL - 2 STR	<b>32402B</b>	100 / BOX	1 BOX	14.14
	2 SOL - 2/0 STR	<b>32320B</b>	25 / BOX	1 BOX	8.11
	2 SOL - 3/0	<b>32330B</b>	25 / BOX	1 BOX	10.16

## SPLIT BOLT CONNECTORS

Tin Plated Copper

- APPLICATION:** Used to join two copper conductors together when tapping, splicing or terminating. Indoors or outdoors. Use oxide-inhibiting compound when connecting aluminum ACSR or aluminum to copper conductors.

  
Contact us for Canadian regulatory listings



	SIZE	PART #	PCS / PKG	TOTAL CTN QTY	CTN WT
<b>WITH SPACER BAR</b>					
<b>BULK</b>	10 STR - 6STR	<b>32004B</b>	25 / BOX	1 BOX	3.11
	16 STR - 8STR	<b>32008B</b>	1 / BOX	1 BOX	

## SOLDERLESS TERMINAL LUGS

Copper

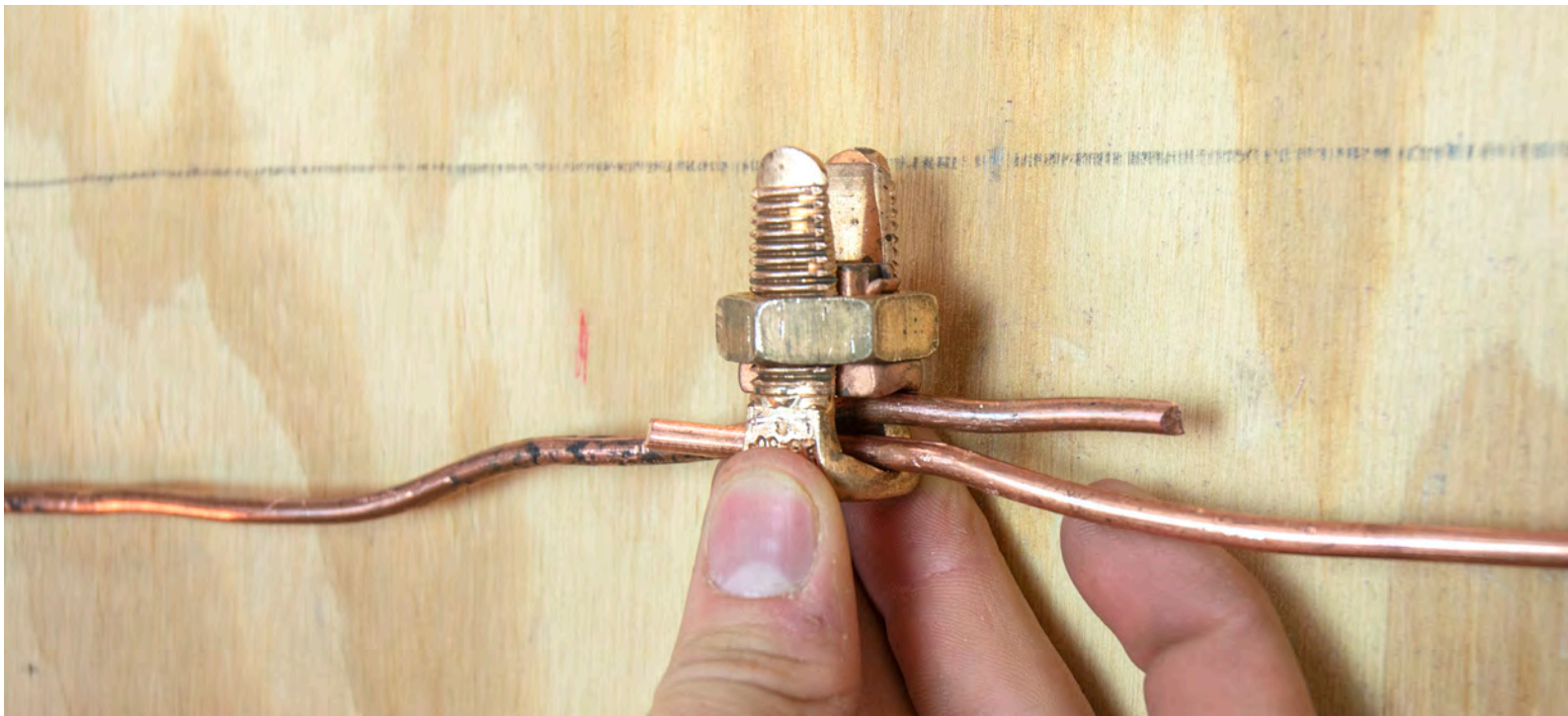
- APPLICATION:** Use to connect a wire or wires to a metal enclosure. Indoors or outdoors.

  
Contact us for Canadian regulatory listings



	SIZE	PART #	PCS / PKG	TOTAL CTN QTY	CTN WT
<b>BULK</b>	#8 - #2	<b>32602B</b>	200 / BOX	1 BOX	10.14
	#6 - 1/0	<b>32510B</b>	100 / BOX	1 BOX	11.16
	#2 - 4/0	<b>32540B</b>	10 / BOX	1 BOX	2.51

GND

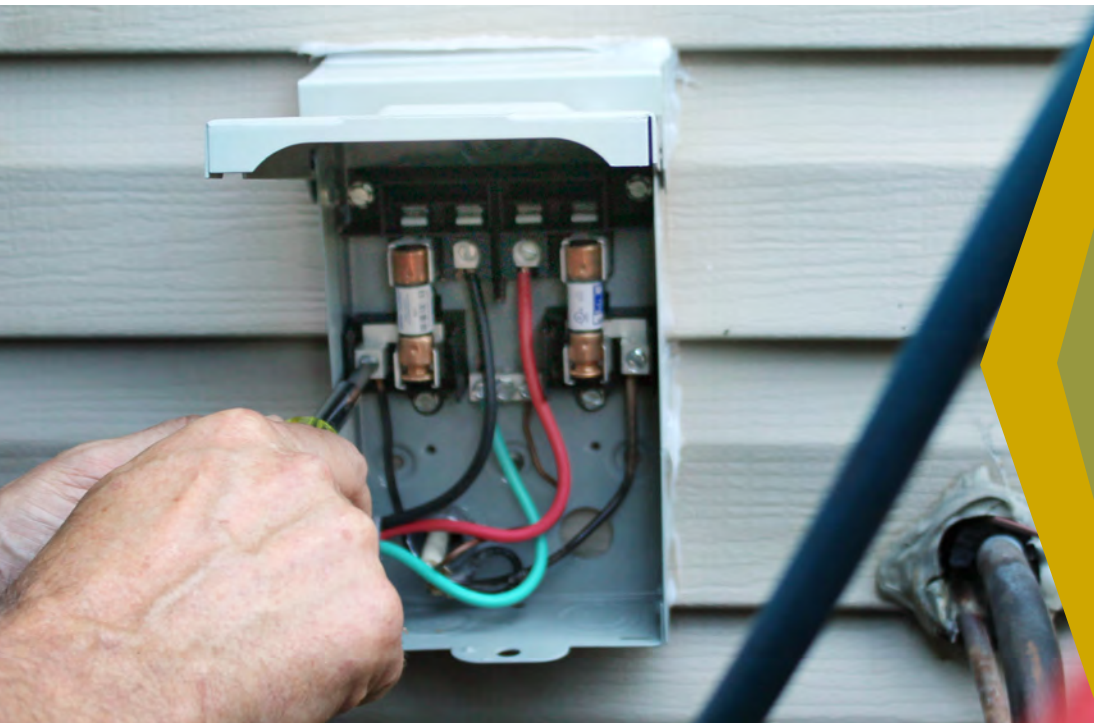






**HALEX**

BEYOND THE CURRENT



- *Non-Fused  
AC Disconnects ..... 96*
- *AC Whips ..... 96*

## **AC DISSCONNECTS**

1.800.749.3261  
[halexco.com](http://halexco.com)



### FUSED AC DISCONNECTS

Steel

- APPLICATION:** Used to stop the power from going to an air conditioner unit to allow for safe working conditions. 120/240 VOLTS



Contact us for Canadian regulatory listings

	SIZE	PART #	PCS / PKG	TOTAL CTN QTY	CTN WT
UPC	1/2" x 6'	<b>HF30R</b>	1 / BOX	1 BOX	2.70
	3/4" x 6'	<b>HF60R</b>	1 / BOX	1 BOX	2.80



### NON-FUSED AC DISCONNECTS

Steel

- APPLICATION:** Used to stop the power from going to an air conditioner unit to allow for safe working conditions. 120/240 VOLTS



Contact us for Canadian regulatory listings

	SIZE	PART #	PCS / PKG	TOTAL CTN QTY	CTN WT
UPC	60 AMP	<b>HNF60R</b>	1 / BOX	1 BOX	2.30



### NON-METALLIC AC DISCONNECTS

PPE-PS

- APPLICATION:** Used to stop the power from going to an air conditioner unit to allow for safe working conditions in coastal applications. 120/240 VOLTS



Contact us for Canadian regulatory listings

	SIZE	PART #	PCS / PKG	TOTAL CTN QTY	CTN WT
UPC	60 AMP	<b>NMHN60R</b>	1 / BOX	1 BOX	1.00
BULK	60 AMP	<b>NMHN60R10</b>	10 / BOX	1 BOX	10.00

### AC WHIPS

PVC

- APPLICATION:** Use to connect AC disconnects to AC compressor. Indoors or outdoors.



Contact us for Canadian regulatory listings



	SIZE	PART #	PCS / PKG	TOTAL CTN QTY	CTN WT
UPC	1/2" x 6'	<b>69126</b>	1 / BAG	6 BAGS	12.0
	3/4" x 6'	<b>69346</b>	1 / BAG	6 BAGS	16.4

**To place an order please contact our customer service team  
800-749-3261 or [CS@halexco.com](mailto:CS@halexco.com)**

**In your order please include the following information:**

- Your name
- Company Name
- Phone Number
- Sales Representative group (if applicable)
- Part Numbers
- Payment Method
- Expected Delivery Date

## Electrical Distributors



101 Production Drive • Harrison, OH 45030

1-800-749-3261 • [halexco.com](http://halexco.com)

PRINTED IN THE USA

HALEX is a registered trademark of Halex/Scott Fetzer Company. Trade names and corporate references herein are for identification purposes only and are not intended for promotion purposes. All product or specification information is subject to change without notice. Copyright © 2023 Halex/Scott Fetzer. All Rights Reserved.