



HALEX[®]

BEYOND THE CURRENT

a Scott Fetzer company



PRODUCT CATALOG

BEYOND THE CURRENT

CONTRACTOR CLEAR PACKS®

BRAND NEW CCP DESIGN

PATENTED INNOVATION TO DRIVE SALES!

Introducing a new innovative way to merchandise and sell our most popular products in higher quantities. Our new Contractor Clear Packs (CCPs) are more durable, easier to stack, and come with theft resistant closures. They protect the product and your profits! The new CCP design is heading to stores in 2023.

- EASY TO STOCK
- EASY TO ORGANIZE
- EASY TO SELL

Available throughout these select categories!



EMT

FLEX

NM

RGD

ACC



HALEX®

BEYOND THE CURRENT

a Scott Fetzer company

101 Production Drive • Harrison, OH 45030
1-800-749-3261 • halexco.com

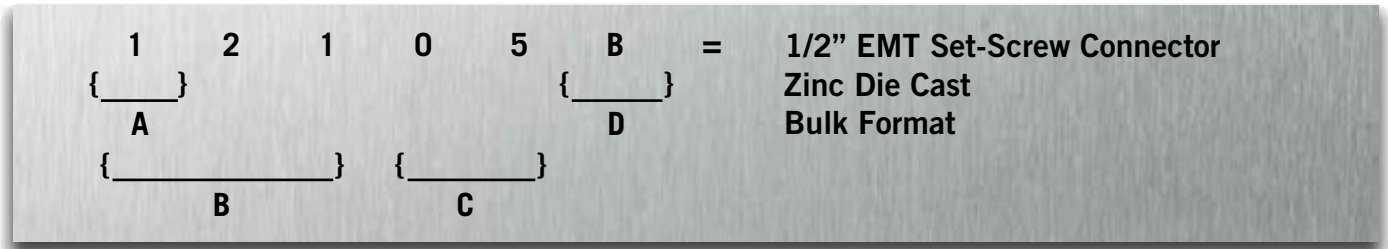
TABLE OF CONTENTS

Catalog Parts Numbering System	1	90° Liquid Tight Connectors - One-Piece	43	Service Drop Brackets	76
Online Features	2	90° Liquid Tight Connectors - Multi-Piece	43	Fork Bolts	77
UNIVERSAL STRAPS		Straight Liquid Tight Connectors	44	Adjustable Porcelain Wireholder	77
One and Two Hole Straps	4	45° Liquid Tight Connectors	44	Porcelain Wireholders	77
ELECTRICAL METALLIC TUBING FITTINGS		90° Liquid Tight Connectors	45	Service Clevis	77
Set-Screw Connectors	6-7	Straight Quick-Set Liquid Tight Connectors	45	Service Entrance ELL	78
Set-Screw Couplings	8-9	90° Quick-Set Liquid Tight Connectors	46	Wedge Clamp Connectors	78
Compression Connectors	10-11	Screw-In Couplings	46	Roof Flashings	78
Compression Couplings	12-13	RIGID CONDUIT FITTINGS		Electric Pane Washers	78
Rain Tight Compression Connectors	14	AC Whip	46	ACCESSORIES	
Rain Tight Compression Couplings	15	Set-Screw Connectors	48	Cable Staples For SEU and Range Cable	80
EMT-To-Flex Combination Couplings	16	Set-Screw Couplings	49	Plastic Insulating Staples	80
EMT Insulation Bushings	16	Compression Connectors	49-50	Strain Relief Cord Connector	81
EMT-To-Rigid Combination Couplings	16	Compression Couplings	50-51	Non-Metallic Strain Relief Cord Connector	81
EMT-To-Non-Metallic Combination Couplings	17	Rigid-To-EMT Couplings	51	Knockout Seals	82
EMT-To-Box Offset Connectors - Set-Screw Type	17	Rigid Three-Piece Couplings	51	3 Piece Knockout Seals	82
EMT-To-Box Offset Connectors - Compression Type	17	Aluminum Couplings	52	Switch Box Supports	82
EMT-To-EMT Pull Elbows	18	Rigid Couplings	52	Snap In Bushings	83
EMT-To-Box Pull Elbows	18	Rigid To Rigid Pull Elbows	52	Universal Snap In Bushings	83
EMT / Rigid-To-EMT / Rigid Combination Elbows	18	EMT/Rigid-To-EMT/Rigid Combo Elbows	52	Nail Plates	83
EMT / Rigid-To-Box Combination Elbows	18	EMT/Rigid-To-Box Combo Elbow	53	Jack Chain	84
EMT-To-EMT Inside-Corner Pull Elbows	19	Rigid-To-Box Pull Elbows	53	"S" Hook	84
90° Compression Elbows - Short Radius	19	90° Large Radius Elbows	53	"Sky Tie" Cable Clamps	84
90° Compression Elbows - Large Radius	19	90° Short Radius Elbows	53	Extension Springs	84
90° Set-Screw Elbows - Large Radius	19	45° Rigid Elbows	54	Duct Seal	84
90° Elbows	20	90° Rigid Elbows	54	Fixture Hangers	85
45° Elbows	20	90° Elbows - Aluminum	54	Conduit Hangers	85
Speed Thread One Hole Strap	21	Offset Nipples	55	Beam Clamps	86
One-Hole Straps	22	Chase Nipples	55	GROUNDING AND BONDING FITTINGS	
Two-Hole Straps	23	Conduit Nipples	56-57	Ground Clamps (Bare Wire)	88-89
Drive Straps	24	Water-Tight Conduit Hubs	58	Ground Clamps (Bare Wire) - For Direct Burial	88
EMT / Rigid Combo Conduit Bodies	25-26	Box Spacers	58	Ground Clamps (Armored Cable)	89
FLEXIBLE METALLIC CONDUIT FITTINGS		Conduit Bushings	58	Ground Rod Clamps	90
Screw-In Connectors	28	Plastic Bushings	59	Ground Screws	90
Screw-In Couplings	29	Insulated Metallic Grounding Bushing	60	Ground Wires	90
Set-Screw Connectors	29	Conduit Locknuts	61-62	Ground Clips	91
Saddle Connectors	29	Sealing Conduit Locknuts	62	Split Bolt Connectors	92
Squeeze Connectors	30	Grounding Locknuts	62	Split Bolt Connectors (With Spacer Bar)	92
AC (BX) Connectors	31	Reducing Washers	63	Solderless Terminal Lugs	92
Clamp-Combination Connectors	31	Reducing Bushings	64	DISCONNECT	
Duplex Connectors	31	One-Hole Strap Malleable Iron	64	Non-Fused AC Disconnects	94
Flex-To-EMT Combination Couplings	32	Clamp Backs	64	AC Whips	94
MC Snap-In Connectors	32	Clamp Back And One Hole Strap	65	INDEX	
MC Snap-In Duplex Connector	32	Speed Thread One Hole Strap	65	96-100
Cut-In Snap Lock Connector	32	One-Hole Straps	66		
MC-AC-Flex Double Snap Connector	33	Two-Hole Straps	66		
90° Connectors	33	Rigid / EMT Combo Conduit Bodies	67		
AC / MC One-Hole Strap	34	Mogul Pulling Elbows - Type LB	67		
Anti-Short Bushings	34	Threaded Conduit Bodies - No Cover	68		
NON-METALLIC SHEATHED CABLE FITTINGS		Threaded Conduit Bodies - With Stamped Cover	68-69		
Push-In Cable Connectors	36	Service Entrance ELL	70		
Plastic Cable Connectors	36	Conduit Body Covers	70		
Clamp Connectors	37	Conduit Body Gaskets	70		
Clamp Connectors - Service Entrance	37	SERVICE ENTRANCE FITTINGS			
Clamp Connectors - Snap-In	38	One Hole Ground Strap	72		
Clamp Connectors - Two-Piece	38	One-Hole Straps (SE & SEU Cable)	72		
Clamp Connectors - Combination	38	Two-Hole Straps (SE & SEU Cable)	72		
Saddle Connectors	39	Water-Tight Connectors	73		
Duplex Connectors	39	Service Entrance Caps	73-74		
Water-Tight UF Connectors	39	Oval Service Entrance Cable Hoods	74		
EMT-To-Non-Metallic Combination Couplings	40	Slip-Fit Mast Heads	75		
One-Hole Straps	40	Service Cable Sill Plates	75		
LIQUID-TIGHT CONDUIT FITTINGS		Conduit Sill Plates	75		
Straight Liquid Tight Connectors - One-Piece	42	Clamp Connectors - Service Entrance	75		
Straight Liquid Tight Connectors - Multi-Piece	42	Offset Bottom Reducers	76		
		Conduit Supports (Lag Screw)	76		
		Conduit Supports (Bolt Nut Washer)	76		

INTRODUCTION: PARTS NUMBERING SYSTEM

Halex has adopted an Item Numbering System that allows the reader to quickly distinguish the material type, product type, package type and size of electrical fittings and accessories in our

product line. To familiarize yourself with the numbering system, please note the example and information provided below:



A= First Numeral = Indicates the **Material Type and Pack Format** of an item. When an item is sold in a **Bulk Format**, the **first digit signifies the Material Type**:

0, 1	=	Zinc
3	=	Brass, Bronze, Copper, Malleable Iron
5	=	Die Cast or Stamped Aluminum
6	=	Steel
7	=	Plastic
8, 9	=	Zinc, with an Insulated Throat or Gasket

B = First three numerals = Indicates the actual Product Type of an item.

When used as the first three digits: **121** = E.M.T. Set-Screw Connector that is made of Zinc Die Cast

C= Last two numerals = Indicates the **Size** of an item in inches.

When these digit combinations are used:

03	=	3/8"	12	=	1 1/4"	30	=	3"
05	=	1/2"	15	=	1 1/2"	35	=	3 1/2"
07	=	3/4"	20	=	2"	40	=	4"
10	=	1"	25	=	2 1/2"			

D = Pack Format i.e. **B** = Bulk Packed

ONLINE FEATURES INCLUDE:

- A dedicated area for Electrical Distributors and Sales Reps
- **Product Category**
View product photos and information according to category: EMT, FLEX, Non-Metallic, Liquid-Tight, Rigid, Service Entrance, Ground and Accessories.
- **Find A Part**
 - Halex Parts – Enter a Halex part number to instantly get the product name, size and available link to additional details, from material, application and carton type, to Master Carton information.
 - Search for Other Manufacturer Parts – Enter a competitive part number to receive details on parts made by nine different manufacturers.
- **What's New**
Connect to application/usage information on some of our latest products or technologies.
- **Rep Locator**
Point and click selection by state provides immediate access to all our available rep contact information.
- **Links**
Key industry Web site links are organized by industry inspection; professional contractor and electrical distributor association; codes, regulatory and standards; and other categories.
- **Collateral Ordering**
Order any of our available literature and materials online at any time and on any day. To request a User ID and Password, go to www.halexco.com and click on the Contact tab where you can submit your complete contact information and message.



Visit us online today.



- *Universal Straps.....4*

UNIVERSAL ONE AND TWO HOLE STRAPS

UNIVERSAL ONE AND TWO HOLE STRAPS

UNV

UNIVERSAL ONE-HOLE STRAPS

Steel

- **APPLICATION:** Use to support EMT, RGD, FMC, or LQD conduit. Indoors or outdoors.
- **FEATURES:**
 - 1/2" Fits - EMT, RGD, FMC, LQD
 - 3/4" Fits - EMT, RGD, FMC, LQD



Contact us for Canadian regulatory listings.



	SIZE	PART #	PCS / PKG	TOTAL CTN QTY	CTN WT
UPC	1/2"	22105	4 / BAG	25 BAGS	2.6
	3/4"	22107	4 / BAG	20 BAGS	3.4
CCP	1/2"	62105B	75 / CCP	4 CCP's	8.4
	3/4"	62107B	50 / CCP	4 CCP's	9.6

UNIVERSAL TWO-HOLE STRAPS

Steel

- **APPLICATION:** Use to support EMT, RGD, FMC, or LQD conduit. Indoors or outdoors.
- **FEATURES:**
 - 1/2" Fits - EMT, RGD, FMC, LQD
 - 3/4" Fits - EMT, RGD, FMC, LQD



Contact us for Canadian regulatory listings.



	SIZE	PART #	PCS / PKG	TOTAL CTN QTY	CTN WT
UPC	1/2"	92205	4 / BAG	25 BAGS	1.8
	3/4"	92207	4 / BAG	20 BAGS	1.8
CCP	1/2"	62205B	80 / CCP	4 CCP's	7.0
	3/4"	62207B	80 / CCP	4 CCP's	8.4



- *Universal Straps*.....4
- *Set-Screw Connectors*6-7
- *Set-Screw Couplings*8-9
- *Compression Connectors / Couplings*10-15
- *Combination Couplings*16-17
- *Offset Connectors*.....17
- *Elbows*18-20
- *Straps*21-24
- *Conduit Bodies*25-26

ELECTRICAL METALLIC TUBING FITTINGS

SET-SCREW CONNECTORS

Zinc Die Cast

- **APPLICATION:** Used to connect EMT conduit to steel outlet box, load center, or other metal enclosure. Indoors only. Not rated for burial.
- **FEATURES:**
 - 1/2" and 3/4" Concrete tight
 - 1" - 4" Concrete tight when taped



Contact us for Canadian regulatory listings.



	SIZE	PART #	PCS / PKG	TOTAL CTN QTY	CTN WT
UPC	1/2"	23210	5 / BAG	30 BAGS	8.60
	3/4"	23212	5 / BAG	10 BAGS	4.38
	1"	12310	1	15	2.29
	1 1/4"	12312	1	8	2.34
	1 1/2"	12315	1	5	1.89
	2"	12320	1	4	2.03
	3"	12130	1	12	9.94
CCP	1/2"	12101B	50 / CCP	4 CCP's	32.71
	3/4"	12301B	25 / CCP	4 CCP's	28.21
	1"	12111B	20 / CCP	4 CCP's	28.76
BULK	1"	12110B	20 / BOX	10 BOXES	31.25
	1 1/4"	12112B	25 / BOX	4 BOXES	26.29
	1 1/2"	12115B	15 / BOX	4 BOXES	22.51
	2"	12120B	10 / BOX	4 BOXES	21.57
	2 1/2"	12125B	12 / BOX	1 BOX	9.82
	3"	12130B	12 / BOX	1 BOX	12.73
	3 1/2"	12135B	10 / BOX	1 BOX	12.29
	4"	12140B	6 / BOX	1 BOX	9.24



WITH INSULATED THROAT

UPC	1/2"	99105	1/BAG	20 BAGS	1.33
	3/4"	99107	1/BAG	15 BAGS	1.57
BULK	1/2"	92105B	50 / BOX	10 BOXES	31.55
	1"	92110B	20 / BOX	10 BOXES	23.31
	1 1/2"	92115B	15 / BOX	4 BOXES	16.95
	3 1/2"	92135B	10 / BOX	1 BOX	12.35

SET-SCREW CONNECTORS

Steel

- **APPLICATION:** Used to connect EMT conduit to steel outlet box, load center, or other metal enclosure. Indoors only.
- **FEATURES:** Concrete tight when taped



Contact us for Canadian regulatory listings.

	SIZE	PART #	PCS / PKG	TOTAL CTN QTY	CTN WT
UPC	1/2"	96271	1 / BAG	25 BAGS	2.17
	1/2"	26270	5 / BAG	15 BAGS	6.80
	1/2"	26271	10 / BAG	5 BAGS	4.94
	3/4"	26272	5 / BAG	10 BAGS	5.97
	1"	62710	1	10	2.00
	1 1/4"	62712	1	3	1.17
	1 1/2"	62715	1	2	0.98
	2"	62720	1	2	1.28
	2 1/2"	62725	1	3	3.95
CCP	1/2"	62705B	50 / CCP	4 CCP's	48.98
	3/4"	62707B	25 / CCP	4 CCP's	28.52
	1"	62711B	20 / CCP	4 CCP's	37.56
BULK	1"	62710B	20 / BOX	10 BOXES	45.41
	1 1/4"	62712B	25 / BOX	1 BOX	9.12
	1 1/2"	62715B	25 / BOX	1 BOX	6.32
	2"	62720B	20 / BOX	1 BOX	12.70
	2 1/2"	62725B	12 / BOX	1 BOX	15.22
	3 1/2"	62735B	6 / BOX	1 BOX	10.64
	4"	62740B	6 / BOX	1 BOX	15.19



WITH INSULATED THROAT

UPC	1/2"	28271	3 / BAG	15 BAGS	3.98
	3/4"	28272	3 / BAG	6 BAGS	2.33
	1"	82710	1	12	2.74
	1 1/4"	82712	1	3	1.32
	1 1/2"	82715	1	3	1.52
	2"	82720	1	3	1.79
CCP	1/2"	82705B	50 / CCP	4 CCP's	51.66
	3/4"	82707B	25 / CCP	4 CCP's	39.66
BULK	1"	82710B	20 / BOX	10 BOXES	45.41
	1 1/4"	82712B	25 / BOX	1 BOX	9.09
	1 1/2"	82715B	25 / BOX	1 BOX	11.52
	4"	82740B	6 / BOX	1 BOX	15.16



SET-SCREW COUPLINGS

Zinc Die Cast

- **APPLICATION:** Used to join two lengths of EMT conduit together. Indoors only.
- **FEATURES:**
 - 1/2" and 3/4" Concrete tight
 - 1" - 4" Concrete tight when taped



Contact us for Canadian regulatory listings.



	SIZE	PART #	PCS / PKG	TOTAL CTN QTY	CTN WT
UPC	1/2"	23220	5 / BAG	25 BAGS	8.04
	3/4"	23222	5 / BAG	10 BAGS	4.48
	1"	12410	1	20	2.80
	1 1/4"	12412	1	10	2.93
	1 1/2"	12415	1	5	1.95
	2"	12420	1	4	2.09
CCP	1/2"	12201B	50 / CCP	4 CCP's	34.81
	3/4"	12401B	25 / CCP	4 CCP's	26.91
	1"	12211B	15 / CCP	4 CCP's	22.36
BULK	1"	12210B	20 / BOX	10 BOXES	29.65
	1 1/4"	12212B	25 / BOX	4 BOXES	30.14
	1 1/2"	12215B	15 / BOX	4 BOXES	23.95
	2"	12220B	5 / BOX	4 BOXES	12.92
	2 1/2"	12225B	12 / BOX	1 BOX	10.28
	3"	12230B	12 / BOX	1 BOX	13.10
	4"	12240B	6 / BOX	1 BOX	10.43

SET-SCREW COUPLINGS

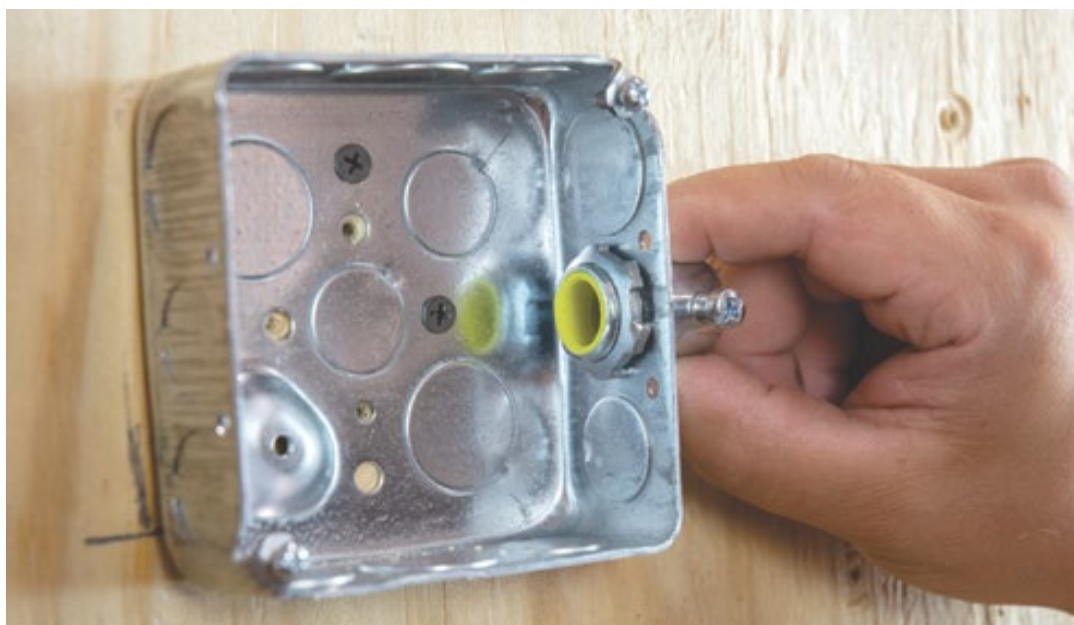
Steel

- **APPLICATION:** Used to join two lengths of EMT conduit together. Indoors only.
- **FEATURES:** Concrete tight when taped



Contact us for Canadian regulatory listings.

	SIZE	PART #	PCS / PKG	TOTAL CTN QTY	CTN WT
UPC	1/2"	26280	5 / BAG	15 BAGS	5.78
	1/2"	26281	10 / BAG	5 BAGS	4.18
	3/4"	26282	5 / BAG	6 BAGS	3.01
	1"	62810	1	12	2.19
	1 1/4"	62812	1	5	2.37
	1 1/2"	62815	1	3	1.82
	2"	62820	1	3	2.18
	2 1/2"	62825	1	3	5.33
	3"	62830	1	3	5.45
CCP	1/2"	62805B	50 / CCP	4 CCP's	43.10
	3/4"	62807B	25 / CCP	4 CCP's	36.66
	1"	62809B	10 / CCP	4 CCP's	19.96
BULK	1"	62810B	10 / BOX	10 BOXES	27.20
	1"	62811B	10 / BOX	10 BOXES	27.20
	1 1/4"	62812B	25 / BOX	1 BOX	11.02
	1 1/2"	62815B	25 / BOX	1 BOX	14.14
	2"	62820B	20 / BOX	1 BOX	13.78
	2 1/2"	62825B	12 / BOX	1 BOX	20.74
	3"	62830B	12 / BOX	1 BOX	21.93
	3 1/2"	62835B	6 / BOX	1 BOX	13.64



COMPRESSION CONNECTORS

Zinc Die Cast

- **APPLICATION:** Used to connect EMT conduit to steel outlet box, load center, or other metal enclosure. Indoors only.
- **FEATURES:** Concrete tight



Contact us for Canadian regulatory listings.



	SIZE	PART #	PCS / PKG	TOTAL CTN QTY	CTN WT
UPC	1/2"	22210	5 / BAG	20 BAGS	8.65
	3/4"	22212	5 / BAG	10 BAGS	6.35
	1"	02310	1	15	3.36
	1 1/4"	02312	1	8	2.89
	1 1/2"	02315	1	5	2.82
	2"	02320	1	4	3.15
CCP	1/2"	02101B	50 / CCP	4 CCP's	46.56
	3/4"	02301B	25 / CCP	4 CCP's	34.31
	1"	02111B	20 / CCP	4 CCP's	45.76
BULK	1"	02110B	20 / BOX	10 BOXES	45.45
	1 1/4"	02112B	25 / BOX	4 BOXES	36.66
	1 1/2"	02115B	15 / BOX	4 BOXES	34.36
	2"	02120B	10 / BOX	4 BOXES	32.03
	2 1/2"	02125B	12 / BOX	1 BOX	13.84
	3"	02130B	12 / BOX	1 BOX	16.86
	3 1/2"	02135B	10 / BOX	1 BOX	17.63
	4"	02140B	6 / BOX	1 BOX	12.49



WITH INSULATED THROAT

UPC	1/2"	28211	3 / BAG	15 BAGS	4.24
	3/4"	28212	3 / BAG	10 BAGS	3.97
	1"	82110	1	15	3.33
	1 1/4"	82112	1	8	2.83
	2"	82120	1	4	3.03
BULK	1/2"	82105B	50 / BOX	10 BOXES	46.10



2-PIECE DESIGN

UPC	1/2"	02005	1 / BAG	10 BAGS	1.04
	3/4"	02007	1 / BAG	10 BAGS	1.04
BULK	3/4"	02007B	25 / BOX	1 BOX	2.37

COMPRESSION CONNECTORS

Steel

- **APPLICATION:** Used to connect EMT conduit to steel outlet box, load center, or other metal enclosure. Indoors only.
- **FEATURES:** Concrete tight



Contact us for Canadian regulatory listings.

	SIZE	PART #	PCS / PKG	TOTAL CTN QTY	CTN WT
UPC	1/2"	26230	5 / BAG	15 BAGS	10.45
	3/4"	26232	5 / BAG	5 BAGS	4.59
	1"	62310	1	5	1.67
	1 1/4"	62312	1	3	1.50
	1 1/2"	62315	1	2	1.14
	2"	62320	1	2	1.63
CCP	1/2"	62305B	25 / CCP	4 CCP's	33.68
	3/4"	62307B	25 / CCP	4 CCP's	51.76
	1"	62311B	10 / CCP	4 CCP's	27.86
BULK	1"	62310B	10 / BOX	10 BOXES	21.45
	1 1/4"	62312B	25 / BOX	1 BOX	5.34
	1 1/2"	62315B	20 / BOX	1 BOX	11.25
	2"	62320B	15 / BOX	1 BOX	11.44
	2 1/2"	62325B	12 / BOX	1 BOX	21.96



WITH INSULATED THROAT

UPC	1/2"	28231	3 / BAG	15 BAGS	4.67
	3/4"	28232	3 / BAG	10 BAGS	5.84
	1"	82310	1	15	3.84
	1 1/4"	82312	1	4	1.95
	1 1/2"	82315	1	5	2.56
	2"	82320	1	4	3.07
	2 1/2"	82325	1	3	5.77
CCP	1/2"	82305B	25 / CCP	4 CCP's	28.42
	3/4"	82307B	25 / CCP	4 CCP's	51.76
BULK	1"	82310B	10 / BOX	10 BOXES	21.45
	1 1/4"	82312B	25 / BOX	1 BOX	5.34
	1 1/2"	82315B	20 / BOX	1 BOX	11.25
	2"	82320B	15 / BOX	1 BOX	11.44
	2 1/2"	82325B	12 / BOX	1 BOX	22.52
	3"	82330B	12 / BOX	1 BOX	23.04



COMPRESSION COUPLINGS

Zinc Die Cast

- **APPLICATION:** Used to join two lengths of EMT conduit together. Indoors only.
- **FEATURES:** Concrete tight



Contact us for Canadian regulatory listings.



	SIZE	PART #	PCS / PKG	TOTAL CTN QTY	CTN WT
UPC	1/2"	22221	5 / BAG	15 BAGS	8.73
	3/4"	22222	5 / BAG	5 BAGS	4.43
	1"	02410	1	10	2.97
	1 1/4"	02412	1	6	2.83
	1 1/2"	02415	1	5	3.51
	2"	02420	1	4	3.42
CCP	1/2"	22205B	45 / CCP	4 CCP's	55.78
	3/4"	02401B	25 / CCP	4 CCP's	46.19
	1"	02211B	12 / CCP	4 CCP's	36.40
BULK	1"	02210B	20 / BOX	10 BOXES	54.15
	1 1/4"	02212B	25 / BOX	4 BOXES	46.08
	1 1/2"	02215B	15 / BOX	4 BOXES	42.14
	2"	02220B	10 / BOX	4 BOXES	36.07
	2 1/2"	02225B	12 / BOX	1 BOX	15.95
	3"	02230B	12 / BOX	1 BOX	21.11
	4"	02240B	6 / BOX	1 BOX	15.12

COMPRESSION COUPLINGS

Steel

- **APPLICATION:** Used to join two lengths of EMT conduit together. Indoors only.
- **FEATURES:** Concrete tight



Contact us for Canadian regulatory listings.

	SIZE	PART #	PCS / PKG	TOTAL CTN QTY	CTN WT
UPC	1/2"	62641	5 / BAG	6 BAGS	4.91
	3/4"	62642	5 / BAG	3 BAGS	3.09
	1"	62410	1	4	1.38
	1 1/4"	62412	1	2	1.23
	1 1/2"	62415	1	2	1.35
	2"	62420	1	2	1.64
CCP	1/2"	62401B	35 / CCP	4 CCP's	55.91
	3/4"	62402B	20 / CCP	4 CCP's	41.71
	1"	62411B	10 / CCP	4 CCP's	31.16
BULK	1"	62410B	10 / BOX	10 BOXES	33.60
	1 1/4"	62412B	25 / BOX	1 BOX	12.28
	1 1/2"	62415B	20 / BOX	1 BOX	11.75
	2"	62420B	15 / BOX	1 BOX	11.41
	2 1/2"	62425B	12 / BOX	1 BOX	31.22
	3"	62430B	6 / BOX	1 BOX	16.59
	4"	62440B	6 / BOX	1 BOX	28.91



RAIN TIGHT COMPRESSION CONNECTORS

Steel

- **APPLICATION:** Use to connect EMT conduit to steel outlet box, load center, or other metal enclosure in a wet location. Outdoors.



Contact us for Canadian regulatory listings.



	SIZE	PART #	PCS / PKG	TOTAL CTN QTY	CTN WT
UPC	1/2"	6250	5 / BAG	15 BAGS	10.00
	3/4"	6252	5 / BAG	5 BAGS	4.50
	1"	62511	1	5	1.48
	1 1/4"	62512	1	3	1.52
	1 1/2"	62515	1	2	1.12
	2"	62520	1	2	1.47
CCP	1/2"	62501B	40 / CCP	4 CCP's	44.56
	3/4"	62502B	20 / CCP	4 CCP's	35.44
	1"	62503B	15 / CCP	4 CCP's	39.91
BULK	1/2"	62505B	50 / BOX	1 BOX	6.43
	3/4"	62507B	25 / BOX	1 BOX	4.14
	1"	62510B	15 / BOX	1 BOX	4.06
	1 1/4"	62512B	20 / BOX	1 BOX	8.58
	1 1/2"	62515B	10 / BOX	1 BOX	4.95
	2"	62520B	10 / BOX	1 BOX	6.52
	2 1/2"	62525B	6 / BOX	1 BOX	11.74
	3"	62530B	6 / BOX	1 BOX	11.87
4"	62540B	6 / BOX	1 BOX	16.04	

WITH INSULATED THROAT



UPC	1/2"	29251	3 / BAG	15 BAGS	5.94
	3/4"	29252	3 / BAG	10 BAGS	5.41
	1"	92510	1	15	3.57
	1 1/4"	92512	1	4	1.81
	1 1/2"	92515	1	5	2.49
	2"	92520	1	4	2.71
	3"	92530	1	3	6.13
BULK	1/2"	92505B	50 / BOX	1 BOX	6.43
	3/4"	92507B	25 / BOX	1 BOX	4.28
	1"	92510B	15 / BOX	1 BOX	4.06
	1 1/2"	92515B	10 / BOX	1 BOX	4.95

RAIN TIGHT COMPRESSION COUPLINGS

Steel

- **APPLICATION:** Use to connect two lengths of EMT conduit together in a wet location. Outdoors.



Contact us for Canadian regulatory listings.

	SIZE	PART #	PCS / PKG	TOTAL CTN QTY	CTN WT
UPC	1/2"	26261	5 / BAG	6 BAGS	5.18
	3/4"	26262	5 / BAG	3 BAGS	3.55
	1"	62610	1	4	1.48
	1 1/4"	62612	1	2	1.17
	1 1/2"	62615	1	2	1.34
	2"	62620	1	2	1.66
	3"	62630	1	3	7.49
CCP	1/2"	62601B	35 / CCP	4 CCP's	59.55
	3/4"	62602B	20 / CCP	4 CCP's	36.56
	1"	62603B	10 / CCP	4 CCP's	33.16
BULK	1"	62610B	15 / BOX	1 BOX	4.91
	1 1/4"	62612B	20 / BOX	1 BOX	9.30
	1 1/2"	62615B	10 / BOX	1 BOX	5.54
	2"	62620B	10 / BOX	1 BOX	7.29
	2 1/2"	62625B	6 / BOX	1 BOX	12.21
	3"	62630B	6 / BOX	1 BOX	14.84
	4"	62640B	6 / BOX	1 BOX	21.88



EMT-TO-FLEX COMBINATION COUPLINGS

Zinc Die Cast

- **APPLICATION:** Used to join EMT conduit to flexible metallic conduit. Indoors only.



Contact us for Canadian regulatory listings.

	SIZE	PART #	PCS / PKG	TOTAL CTN QTY	CTN WT
COMPRESSION TO SCREW-IN TYPE					
UPC	1/2"	20491	2 / BAG	10 BAGS	1.83
	3/4"	20492	2 / BAG	8 BAGS	1.99
	1" - 1"	04910	1	10	0.96
BULK	1/2" - 1/2"	04905B	50 / BOX	10 BOXES	41.95
	3/4" - 3/4"	04907B	25 / BOX	10 BOXES	28.95



EMT-TO-FLEX COMBINATION COUPLINGS

Zinc Die Cast

- **APPLICATION:** Used to join EMT conduit to flexible metallic conduit. Indoors only.



Contact us for Canadian regulatory listings.



	SIZE	PART #	PCS / PKG	TOTAL CTN QTY	CTN WT
SET-SCREW TYPE					
UPC	1/2" - 1/2"	91531	1 / BAG	15 BAGS	1.51
	3/4" - 3/4"	91532	1	10	1.15
BULK	1/2" - 1/2"	15305B	25 / BOX	10 BOXES	21.75
	3/4" - 3/4"	15307B	25 / BOX	10 BOXES	27.51

EMT INSULATION BUSHINGS

PVC

- **APPLICATION:** Use to protect cables from abrasion from edge of EMT. Installed directly onto conduit. Indoors only.



	SIZE	PART #	PCS / PKG	TOTAL CTN QTY	CTN WT
UPC	1/2"	27501	4 / BAG	20 BAGS	0.51
	3/4"	27502	4 / BAG	15 BAGS	0.55
	1"	27503	2 / BAG	15 BAGS	0.46
	1 1/4"	27504	2 / BAG	15 BAGS	0.49
	1 1/2"	27505	2 / BAG	10 BAGS	0.44
	2"	27506	2 / BAG	10 BAGS	0.44
BULK	1/2"	75005B	100 / BOX	10 BOXES	5.63
	3/4"	75007B	75 / BOX	10 BOXES	5.13
	1"	75010B	50 / BOX	10 BOXES	4.15
	1 1/4"	75012B	25 / BOX	10 BOXES	3.20
	1 1/2"	75015B	25 / BOX	10 BOXES	3.20
	2"	75020B	25 / BOX	10 BOXES	3.46

EMT-TO-RIGID COMBINATION COUPLINGS

Steel

- **APPLICATION:** Use to join EMT conduit to Rigid metal conduit. Indoors only.



Contact us for Canadian regulatory listings.



	SIZE	PART #	PCS / PKG	TOTAL CTN QTY	CTN WT
UPC	1/2" - 1/2"	91534	1 / BAG	10 BAGS	1.68
	3/4" - 3/4"	91536	1 / BAG	10 BAGS	2.70
BULK	1/2" - 1/2"	15304B	25 / BOX	1 BOX	3.96
	3/4" - 3/4"	15306B	25 / BOX	1 BOX	5.06

EMT-TO-NON-METALLIC COMBINATION COUPLINGS

Zinc Die Cast

- **APPLICATION:** Use to join EMT conduit to non-metallic sheathed cable. Indoors only.



Contact us for Canadian regulatory listings.



	SIZE	PART #	PCS / PKG	TOTAL CTN QTY	CTN WT
UPC	1/2" - NM	91530	1 / BAG	15 BAGS	1.25
CCP	1/2" - NM	15301B	25 / CCP	4 CCP's	17.58
BULK	1/2" - NM	15303B	50 / BOX	10 BOXES	32.25

EMT-TO-BOX OFFSET CONNECTORS - SET-SCREW TYPE

Zinc Die Cast

- **APPLICATION:** Use to connect EMT conduit to a metal outlet box or enclosure where an offset is desired. Indoors only.



Contact us for Canadian regulatory listings.



	SIZE	PART #	PCS / PKG	TOTAL CTN QTY	CTN WT
UPC	1/2"	90371	1	20	2.11
	3/4"	90372	1	10	1.99
BULK	1/2"	03705B	10 / BOX	10 BOXES	12.27
	3/4"	03707B	10 / BOX	10 BOXES	17.85

EMT-TO-BOX OFFSET CONNECTORS - COMPRESSION TYPE

Zinc Die Cast

- **APPLICATION:** Use to connect EMT conduit to a metal outlet box or enclosure where an offset is desired. Indoors or outdoors. Not rated for wet locations.



Contact us for Canadian regulatory listings.



	SIZE	PART #	PCS / PKG	TOTAL CTN QTY	CTN WT
UPC	1/2"	03905	1	20	2.50
	3/4"	03907	1	10	2.22

EMT-TO-EMT PULL ELBOWS

Zinc Die Cast

- APPLICATION:** Use to connect EMT conduit together at a 90° bend. Dry location.



Contact us for Canadian regulatory listings.



	SIZE	PART #	PCS / PKG	TOTAL CTN QTY	CTN WT
WITHOUT GASKET					
UPC	1/2"	14405	1	15	2.92
	3/4"	14407	1	10	3.11
WITH NEOPRENE GASKET					
UPC	1/2"	94405	1	10	2.10
	3/4"	94407	1	5	1.72
	1"	94410	1	5	3.36

EMT-TO-BOX PULL ELBOWS

Zinc Die Cast

- APPLICATION:** Use to connect EMT conduit to a metal box or enclosure to form a 90° bend. Dry location.



Contact us for Canadian regulatory listings.



	SIZE	PART #	PCS / PKG	TOTAL CTN QTY	CTN WT
WITHOUT NEOPRENE GASKET					
UPC	1/2"	14305	1	10	2.12
	3/4"	14307	1	5	1.39

EMT / RIGID-TO-EMT / RIGID COMBINATION ELBOWS

Zinc Die Cast

- APPLICATION:** Use as a wire pulling elbow to facilitate wire pulling through a sharp bend in a run of threaded Rigid or IMC conduit. Rain tight when used with rigid conduit. Indoors or outdoors.



Contact us for Canadian regulatory listings.



	SIZE	PART #	PCS / PKG	TOTAL CTN QTY	CTN WT
UPC	1/2"	94505	1	10	1.85
	3/4"	94507	1	10	3.01
	1"	94510	1	5	3.03

EMT / RIGID-TO-BOX COMBINATION ELBOWS

Zinc Die Cast

- APPLICATION:** Use to connect a run of threaded Rigid or IMC conduit to an outlet box or other metal enclosure. Suitable for outdoor locations when protected by overhead cover. Indoors or outdoors.



Contact us for Canadian regulatory listings.



	SIZE	PART #	PCS / PKG	TOTAL CTN QTY	CTN WT
UPC	1/2"	94705	1	10	1.99
	3/4"	94707	1	5	1.54

EMT-TO-EMT INSIDE-CORNER PULL ELBOWS

Zinc Die Cast

- APPLICATION:** Use to connect EMT conduit together on a 90° inside corner. Indoors only.



Contact us for Canadian regulatory listings.



	SIZE	PART #	PCS / PKG	TOTAL CTN QTY	CTN WT
UPC	1/2"	14605	1	15	2.82
	3/4"	14607	1	8	2.07

90° COMPRESSION ELBOWS - SHORT RADIUS

Zinc Die Cast

- APPLICATION:** Use to connect EMT conduit to a steel outlet box or enclosure where a close radius is desired. Indoors or outdoors.



Contact us for Canadian regulatory listings.



	SIZE	PART #	PCS / PKG	TOTAL CTN QTY	CTN WT
UPC	1/2"	90291	1	15	3.09
	3/4"	90292	1	10	2.89
	1"	02910	1	5	2.38
BULK	1/2"	02905B	25 / BOX	10 BOXES	50.88
	3/4"	02907B	20 / BOX	10 BOXES	55.21

90° COMPRESSION ELBOWS - LARGE RADIUS

Zinc Die Cast

- APPLICATION:** Use to connect EMT conduit to a steel outlet box or enclosure where a close radius is desired. Indoors or outdoors.



Contact us for Canadian regulatory listings.



	SIZE	PART #	PCS / PKG	TOTAL CTN QTY	CTN WT
UPC	1/2"	90281	1 / BAG	15 BAGS	2.10
	3/4"	90282	1 / BAG	10 BAGS	2.14
BULK	1/2"	02805B	20 / BOX	10 BOXES	29.77
	3/4"	02807B	10 / BOX	10 BOXES	22.19

90° SET-SCREW ELBOWS - LARGE RADIUS

Zinc Die Cast

- APPLICATION:** Use to connect EMT conduit to steel outlet box enclosure where large radius 90° bend is desired. Indoors only.



Contact us for Canadian regulatory listings.



	SIZE	PART #	PCS / PKG	TOTAL CTN QTY	CTN WT
UPC	1/2"	90271	1 / BAG	10 BAGS	1.25
BULK	1/2"	02705B	20 / BOX	10 BOXES	24.43
	3/4"	02707B	10 / BOX	10 BOXES	19.59

90° ELBOWS

Steel

- **APPLICATION:** Use to connect EMT conduit together to allow for 90° bends. Indoors or outdoors.



Contact us for Canadian regulatory listings.



	SIZE	PART #	PCS / PKG	TOTAL CTN QTY	CTN WT
UPC	1/2"	64405	1	20	5.74
	3/4"	64407	1	10	4.99
	1"	64410	1	10	9.47
	1 1/4"	64412	1	5	8.48
	1 1/2"	64415	1	4	8.99
	2"	64420	1	2	7.09
	2 1/2"	64425	1	1	5.34
	3"	64430	1	1	9.00
	3 1/2"	64435	1	1	10.58
BULK	4"	64440	1	1	13.00
	1/2"	64405B	50 / BOX	1 BOX	14.09
	3/4"	64407B	50 / BOX	1 BOX	25.91
	1"	64410B	25 / BOX	1 BOX	13.41
	1 1/4"	64412B	20 / BOX	1 BOX	15.55
	1 1/2"	64415B	15 / BOX	1 BOX	31.26
	2"	64420B	10 / BOX	1 BOX	33.67

45° ELBOWS

Steel

- **APPLICATION:** Use to connect EMT conduit together to allow for 45° bends. Indoors or outdoors.



Contact us for Canadian regulatory listings.



	SIZE	PART #	PCS / PKG	TOTAL CTN QTY	CTN WT
UPC	1/2"	64505	1	10	1.90
	3/4"	64507	1	10	3.56
	1"	64510	1	25	14.79
	1 1/4"	64512	1	20	27.59
	1 1/2"	64515	1	15	20.37
	2"	64520	1	10	28.85
	2 1/2"	64525	1	1	3.58
	3"	64530	1	1	4.33
	3 1/2"	64535	1	1	8.50
	4"	64540	1	1	10.00

SPEED THREAD™

EMT ONE HOLE STRAP SPEED THREAD

Steel

- **APPLICATION:** Use to connect two lengths of EMT conduit together in a dry location. Indoors.



Contact us for Canadian regulatory listings.



	SIZE	PART #	PCS / PKG	TOTAL CTN QTY	CTN WT
UPC	1/2"	21305	4 / BAG	25 BAGS	3.5
	3/4"	21307	4 / BAG	20 BAGS	3.7
CCP	1/2"	61305B	50 / CCP	4 CCP's	6.3
	3/4"	61307B	40 / CCP	4 CCP's	7.8

ONE-HOLE STRAPS

Steel

- **APPLICATION:** To support EMT conduit where greater load bearing is required. Indoors or outdoors.



Contact us for Canadian regulatory listings.

	SIZE	PART #	PCS / PKG	TOTAL CTN QTY	CTN WT
UPC	1/2"	96151	4 / BAG	25 BAGS	2.75
	1/2"	26151	25 / BAG	20 BAGS	12.59
	3/4"	96152	4 / BAG	15 BAGS	2.47
	3/4"	26152	20 / BAG	15 BAGS	11.50
	1"	26153	4 / BAG	20 BAGS	5.23
	1 1/4"	26154	4 / BAG	10 BAGS	4.39
	1 1/2"	91515	1 / BAG	10 BAGS	1.66
	1 1/2"	26155	2 / BAG	10 BAGS	3.18
	2"	26156	2 / BAG	5 BAGS	2.31
	2 1/2"	61125*	1	10	4.38
3"	61130*	1	10	5.08	
CCP	1/2"	61505B	100 / CCP	4 CCP's	48.28
	3/4"	61507B	100 / CCP	4 CCP's	34.40
	1"	61511B	50 / CCP	4 CCP's	26.08
BULK	1 1/4"	61512B	50 / BOX	10 BOXES	41.81
	1 1/2"	61515B	25 / BOX	10 BOXES	38.91
	2"	61520B	20 / BOX	10 BOXES	47.83
	3 1/2"	61135B*	25 / BOX	1 BOX	20.23
	4"	61140B*	20 / BOX	1 BOX	16.33

*Both EMT and RGD



TWO-HOLE STRAPS

Steel

- **APPLICATION:** To support EMT conduit where greater load bearing is required. Indoors or outdoors.



Contact us for Canadian regulatory listings.

	SIZE	PART #	PCS / PKG	TOTAL CTN QTY	CTN WT
UPC	1/2"	96161	4 / BAG	15 BAGS	1.18
	1/2"	26161	25 / BAG	15 BAGS	6.44
	3/4"	96162	4 / BAG	10 BAGS	1.11
	3/4"	26162	20 / BAG	10 BAGS	5.02
	1"	26163	4 / BAG	15 BAGS	2.20
	1 1/4"	26164	4 / BAG	10 BAGS	2.49
	1 1/2"	26165	2 / BAG	15 BAGS	2.63
	2"	26166	2 / BAG	15 BAGS	4.18
	2 1/2"	61225	1	7	1.68
	3"	61230	1	10	2.69
	4"	61240	1	6	2.21
CCP	1/2"	61605B	100 / CCP	4 CCP's	19.58
	1"	61610B	50 / CCP	4 CCP's	14.70
BULK	1 1/4"	61612B	25 / BOX	10 BOXES	16.80
	1 1/2"	61615B	25 / BOX	10 BOXES	16.93
	2"	61620B	50 / BOX	4 BOXES	26.39
	2 1/2"	61225B	25 / BOX	1 BOX	4.07
	3 1/2"	61235B	25 / BOX	1 BOX	7.00
	4"	61240B	20 / BOX	1 BOX	6.60



DRIVE STRAPS

Steel

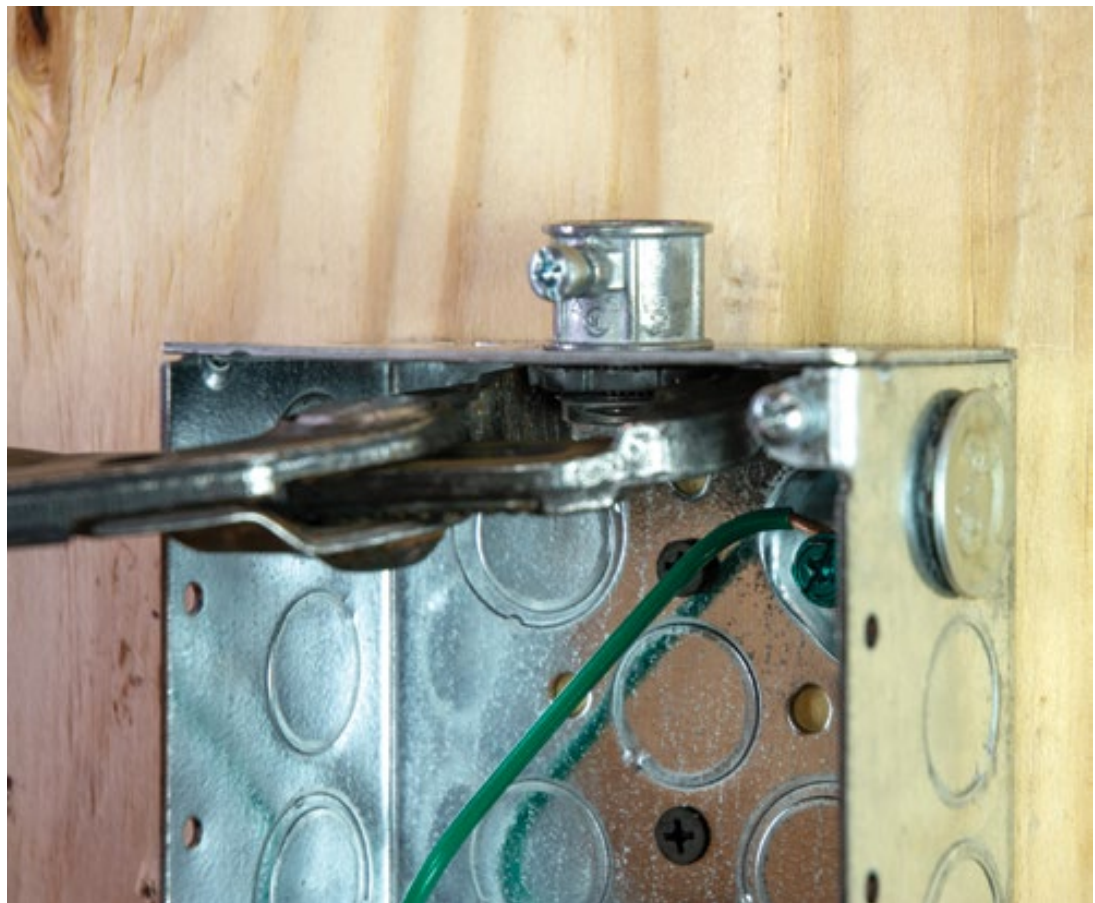


- **APPLICATION:** To secure EMT conduit to a wood or masonry surface. Indoors or outdoors.

Contact us for Canadian regulatory listings.



	SIZE	PART #	PCS / PKG	TOTAL CTN QTY	CTN WT
UPC	1/2"	91405	3 / BAG	75 BAGS	2.48
	1/2"	96141	4 / BAG	75 BAGS	3.23
	1/2"	26141	25 / BAG	20 BAGS	6.96
	3/4"	91407	3 / BAG	75 BAGS	4.73
	3/4"	96142	4 / BAG	75 BAGS	3.98
	3/4"	26142	25 / BAG	15 BAGS	7.37
CCP	1/2"	61401B	200 / CCP	4 CCP's	74.16
	3/4"	61402B	150 / CCP	4 CCP's	61.96
BULK	1"	61410B	100 / BOX	10 BOXES	21.83



EMT / RIGID COMBO CONDUIT BODIES

Aluminum

WITH COVER AND GASKET ASSEMBLED



- **APPLICATION:** Use to gain access to the interior of a raceway for wire pulling, splicing (with limitations as specified by the NEC), and maintenance. Suitable for outdoor locations when protected by overhead cover. Gasket and cover not included on bulk version.

Contact us for Canadian regulatory listings.

	SIZE	PART #	PCS / PKG	TOTAL CTN QTY	CTN WT
--	------	--------	-----------	---------------	--------

TYPE: LL

UPC	1/2"	56305	1	10	3.34
	3/4"	56307	1	6	2.70
BULK	1/2"	57305B	10 / BOX	1 BOX	2.83
	3/4"	57307B	10 / BOX	1 BOX	4.06
	2"	57320B	1 / BOX	1 BOX	3.01

TYPE: C

UPC	1/2"	56405	1	10	3.24
	3/4"	56407	1	6	2.70

TYPE: LB

UPC	1/2"	56605	1	10	3.12
	3/4"	56607	1	10	4.68
BULK	1/2"	57605B	10 / BOX	1 BOX	3.08
	3/4"	57607B	10 / BOX	1 BOX	4.49
	1"	57610B	5 / BOX	1 BOX	3.32
	1 1/4"	57612B	2 / BOX	1 BOX	1.56
	2"	57620B	1 / BOX	1 BOX	2.79

TYPE: T

UPC	1/2"	56805	1	10	3.48
	3/4"	56807	1	5	2.35



CONTINUATION OF CHART PROVIDED ON NEXT PAGE.

CONTINUATION OF CHART FROM PREVIOUS PAGE.

EMT / RIGID COMBO CONDUIT BODIES

Aluminum



- APPLICATION:** Use to gain access to the interior of a raceway for wire pulling, splicing (with limitations as specified by the NEC), and maintenance. Suitable for outdoor locations when protected by overhead cover. Gasket and cover not included on bulk version.

Contact us for Canadian regulatory listings.

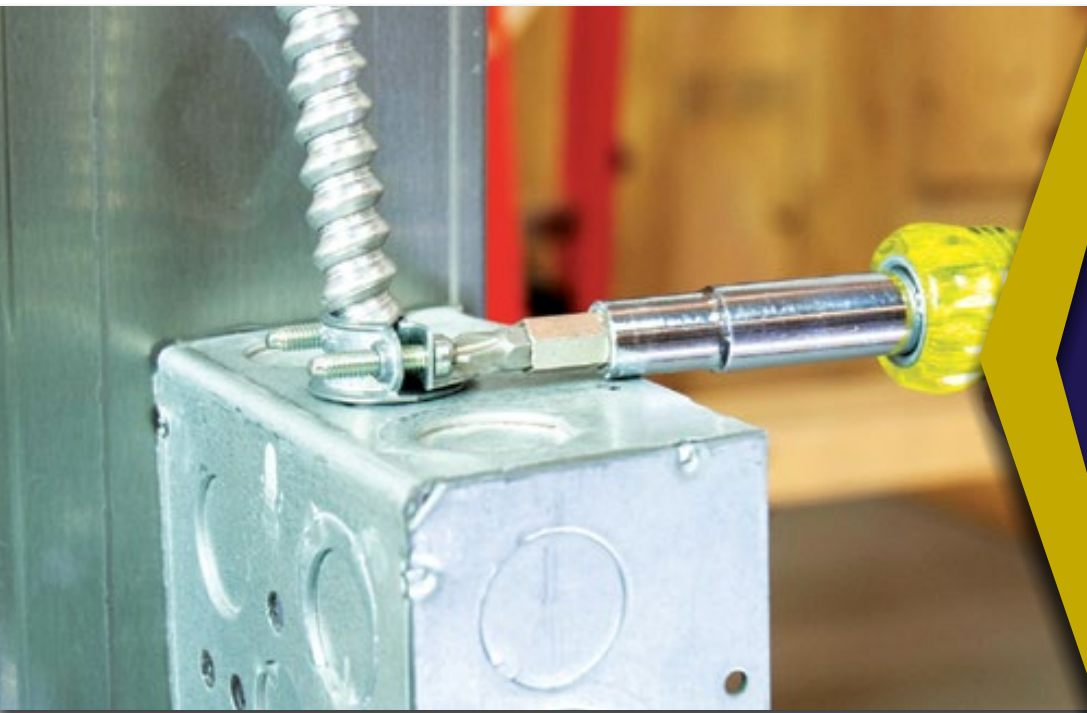
	SIZE	PART #	PCS / PKG	TOTAL CTN QTY	CTN WT
TYPE: LR					
UPC	1/2"	56905	1	10	3.34
BULK	3/4"	57707B	10 / BOX	1 BOX	4.48
	1 1/4"	57712B	2 / BOX	1 BOX	3.05
	2"	57720B	2 / BOX	1 BOX	5.28
	2 1/2"	58525B	1 / BOX	1 BOX	6.13



TYPE: LB					
UPC	1/2"	58705*	1	5	1.78
	3/4"	58707*	1	3	1.14
BULK	2 1/2"	58725B*	1 / BOX	1	6.06



*Gasket included.



FLEXIBLE METALLIC CONDUIT FITTINGS

- *Screw-In Connectors*28
- *Screw-In Couplings*29
- *Set-Screw Connectors*29
- *Saddle Connectors*.....29
- *Squeeze Connectors*30
- *AC (BX) Connectors*31
- *Clamp-Combination Connectors*31
- *Duplex Connectors*.....31
- *Flex-To-EMT Combination Couplings*32
- *MC Snap-In Connectors*32
- *MC Snap-In Duplex Connector*.....32
- *Cut-In Snap Lock Connector*.....32
- *MC-AC-FLEX Double Snap Connector*.....33
- *90° Connectors*33
- *AC / MC One-Hole Strap*34
- *Anti-Short Bushings*.....34

SCREW-IN CONNECTORS

Zinc Die Cast

- **APPLICATION:** Used to connect flexible metallic conduit to steel outlet box, load center or other metal enclosure. Indoors only.
- **SUITABLE FOR:**
 - 1/2" - steel, reduced wall steel and aluminum flexible metal conduit
 - 3/8", 3/4" to 1 1/4" and 2" - flexible metal conduit
 - 1 1/2" - steel and reduced wall flexible metal conduit



Contact us for Canadian regulatory listings.



	SIZE	PART #	PCS / PKG	TOTAL CTN QTY	CTN WT
UPC	3/8" (1/2" KO)	90440	1 / BAG	25 BAGS	1.53
	1/2"	20440	5 / BAG	20 BAGS	4.85
	3/4"	20442	5 / BAG	10 BAGS	4.71
	1"	04410	1	15	2.64
	1 1/4"	04412	1	10	2.80
	1 1/2"	04415	1	5	2.06
	2"	04420	1	4	2.41
CCP	3/8" (1/2" KO)	04403B	50 / CCP	4 CCP's	28.08
	1/2"	04405B	50 / CCP	4 CCP's	28.90
BULK	3/4"	04407B	25 / BOX	10 BOXES	24.81
	1"	04410B	25 / BOX	10 BOXES	41.19
	1 1/4"	04412B	10 / BOX	10 BOXES	28.99
	1 1/2"	04415B	10 / BOX	4 BOXES	15.19
	2"	04420B	10 / BOX	4 BOXES	24.31



WITH INSULATED THROAT

UPC	3/8" (1/2" KO)	28440	5 / BAG	15 BAGS	3.98
	1/2"	28441	5 / BAG	30 BAGS	7.82
	3/4"	28442	5 / BAG	15 BAGS	7.00
	1"	84410	1	15	2.68
BULK	3/8" (1/2" KO)	84403B	50 / BOX	10 BOXES	27.35
	1/2"	84405B	50 / BOX	10 BOXES	27.25

SCREW-IN COUPLINGS

Zinc Die Cast

- **APPLICATION:** Used to join two pieces of flexible metallic conduit. Indoors only.
- **SUITABLE FOR:**
 - 1/2" - steel, reduced wall steel and aluminum flexible metal conduit
 - 3/8", 3/4" to 1 1/4" and 2" - flexible metal conduit
 - 1 1/2" - steel and reduced wall flexible metal conduit



Contact us for Canadian regulatory listings.



	SIZE	PART #	PCS / PKG	TOTAL CTN QTY	CTN WT
UPC	1/2"	90451	1 / BAG	25 BAGS	1.57
	3/4"	90452	1 / BAG	15 BAGS	1.44
	1"	04510	1	15	2.11
	1 1/4"	04512	1	10	2.49
	1 1/2"	04515	1	5	1.85
	2"	04520	1	4	2.07
BULK	1/2"	04505B	50 / BOX	10 BOXES	28.45
	3/4"	04507B	25 / BOX	10 BOXES	21.50

SET-SCREW CONNECTORS

Zinc Die Cast

- **APPLICATION:** Used to connect steel or aluminum flexible metallic conduit to a steel outlet box or other metal enclosure. Indoors only.



Contact us for Canadian regulatory listings.



	SIZE	PART #	PCS / PKG	TOTAL CTN QTY	CTN WT
UPC	1/2"	90481	1 / BAG	15 BAGS	1.60
BULK	1/2"	04805B	25 / BOX	10 BOXES	26.08
	3/4"	04807B	25 / BOX	10 BOXES	40.01

WITH INSULATED THROAT

BULK	1/2"	84805B	25 / BOX	10 BOXES	27.25
	3/4"	84807B	25 / BOX	10 BOXES	40.01

SADDLE CONNECTORS

Zinc Die Cast

- **APPLICATION:** Used to connect flexible metallic conduit, AC, MC and NM sheathed cable to a steel outlet box or other metal enclosure. Indoors only.
- **SUITABLE FOR:**
 - #14-2 to the largest size fittable NM sheathed cable
 - #14-2 with ground steel and aluminum armored cable -.470" diameter,
 - 3/8" steel flexible metal conduit, aluminum cont. corrugated metal clad cable 0.510-0.620" diameter
 - Aluminum smooth sheath metal clad cable 0.410-0.500" diameter
 - Aluminum interlocked metal clad cable 0.462-0.548" diameter
 - Steel interlocked metal clad cable 0.422-0.552" diameter



Contact us for Canadian regulatory listings.



	SIZE	PART #	PCS / PKG	TOTAL CTN QTY	CTN WT
UPC	3/8" (1/2" KO)	20670	5 / BAG	10 BAGS	3.58
CCP	3/8" (1/2" KO)	06703B	50 / CCP	4 CCP's	37.06

WITH INSULATED THROAT

BULK	3/8" (1/2" KO)	86703B	50 / BOX	10 BOXES	37.15
------	----------------	--------	----------	----------	-------

FLEXIBLE METALLIC CONDUIT FITTINGS

FLEX

SQUEEZE CONNECTORS

Zinc Die Cast

- **APPLICATION:** Used to connect flexible metallic conduit and steel AC cable to a steel outlet box, load center or other metal enclosure. Indoors only.
- **SUITABLE FOR:**
 - 3/8" steel flexible conduit, .561 steel and .538 - .599
 - Aluminum interlocked metal clad cable
 - 1/2" steel flexible metal conduit and #4-2 wire steel armored cable
 - 3/4" steel flexible metal conduit and #6-3 wire steel armored cable
 - 1" steel and reduced wall steel flexible metal conduit and #2-2 wire steel armored cable
 - 1 1/4" - 4" steel flexible metal conduit



Contact us for Canadian regulatory listings.



	SIZE	PART #	PCS / PKG	TOTAL CTN QTY	CTN WT
UPC	3/8" (1/2" KO)	20420	3 / BAG	10 BAGS	2.05
	1/2"	20421	3 / BAG	15 BAGS	3.86
	3/4"	20422	3 / BAG	5 BAGS	2.03
	1"	04210	1	10	1.91
	1 1/4"	04212	1	5	1.52
	1 1/2"	04215	1	10	3.40
	2"	04220	1	4	1.96
CCP	1/2"	04205B	25 / CCP	4 CCP's	23.60
BULK	3/8" (1/2" KO)	04203B	50 / BOX	10 BOXES	32.86
	3/4"	04207B	25 / BOX	10 BOXES	33.30
	1"	04210B	10 / BOX	10 BOXES	20.54
	1 1/4"	04212B	10 / BOX	10 BOXES	28.63
	1 1/2"	04215B	5 / BOX	10 BOXES	19.47
	2"	04220B	10 / BOX	4 BOXES	20.76
	2 1/2"	04225B	10 / BOX	1 BOX	9.57
	3"	04230B	5 / BOX	1 BOX	7.00
	3 1/2"	04235B	2 / BOX	1 BOX	3.37
	4"	04240B	1 / BOX	1 BOX	2.16

WITH INSULATED THROAT

BULK	3/4"	84207B	25 / BOX	10 BOXES	28.50
	1"	84210B	10 / BOX	10 BOXES	22.25
	1-1/2"	84215B	5 / BOX	10 BOXES	22.25
	2"	84220B	10 / BOX	4 BOXES	20.59

AC (BX) CONNECTORS

Zinc Die Cast

- **APPLICATION:** Used to connect AC (BX) cable to a steel outlet box or other metal enclosure. Indoors only.
- **SUITABLE FOR:**
 - #14-2 steel armored cable



Contact us for Canadian regulatory listings.



	SIZE	PART #	PCS / PKG	TOTAL CTN QTY	CTN WT
UPC	3/8" (1/2" KO)	20581	5 / BAG	30 BAGS	7.47
CCP	3/8" (1/2" KO)	05803B	100 / CCP	4 CCP's	49.62

CLAMP-COMBINATION CONNECTORS

Zinc Die Cast

- **APPLICATION:** In a dry location, use to connect flexible metallic conduit, AC, MC, or NM cable to steel outlet box or other enclosure. Indoors only.
- **SUITABLE FOR:**
 - #14/2 thru 12/3 with ground NM sheathed cable
 - #14-2 wire steel armored cable
 - 3/8" steel flexible metal conduit, aluminum continuous corrugated metal clad cable 0.365-0.519" diameter
 - Aluminum smooth sheath metal clad cable 0.345-0.525" diameter
 - Aluminum interlocked metal clad cable 0.455-0.575" diameter
 - Rectangular aluminum continuous corrugated metal clad cable 0.277" x 0.375", steel interlocked metal clad cable 0.435-0.547" diameter



Contact us for Canadian regulatory listings.



	SIZE	PART #	PCS / PKG	TOTAL CTN QTY	CTN WT
UPC	3/8" (1/2" KO)	20570	5 / BAG	30 BAGS	7.61
CCP	3/8" (1/2" KO)	05711B	50 / CCP	4 CCP's	26.18

DUPLEX CONNECTORS

Zinc Die Cast

- **APPLICATION:** Used to connect two pieces of flexible metallic conduit, AC, MC, or NM sheathed cable, to a steel outlet box or other metal enclosure when using only one knockout opening. Indoors only.
- **SUITABLE FOR:**
 - #14-2 thru #12-3 wire with ground NM sheathed cable
 - #14-2 wire steel armored cable
 - #14-2 wire with ground aluminum armored cable
 - 3/8" FMC, aluminum smooth sheath metal clad cable 0.410-0.500" diameter
 - 3/8" FMC, aluminum interlocked metal clad cable 0.460-0.538" diameter
 - 3/8" FMC, steel interlocked metal clad cable 0.438-0.560" diameter



Contact us for Canadian regulatory listings.



	SIZE	PART #	PCS / PKG	TOTAL CTN QTY	CTN WT
UPC	3/8" (1/2" KO)	21580	2 / BAG	10 BAGS	2.44
CCP	3/8" (1/2" KO)	15803B	25 / CCP	4 CCP's	30.84

FLEX-TO-EMT COMBINATION COUPLINGS

Zinc Die Cast

- **APPLICATION:** Used to join EMT conduit to flexible metal conduit. Indoors only.
- **SUITABLE FOR:**
 - 1/2" steel, steel reduced wall and aluminum flexible metal conduit to EMT
 - 3/4" - 1" flexible metal conduit to EMT



Contact us for Canadian regulatory listings.



	SIZE	PART #	PCS / PKG	TOTAL CTN QTY	CTN WT
SET-SCREW TYPE					
UPC	1/2" - 1/2"	91531	1 / BAG	15 BAGS	1.51
BULK	1/2" - 1/2"	15305B	25 / BOX	10 BOXES	21.75
	3/4" - 3/4"	15307B	25 / BOX	10 BOXES	27.51

	SIZE	PART #	PCS / PKG	TOTAL CTN QTY	CTN WT
COMPRESSION TO SCREW-IN TYPE					
UPC	1/2"	20491	2 / BAG	10 BAGS	1.83
	3/4"	20492	2 / BAG	8 BAGS	1.99
	1"	04910	1	10	0.96
BULK	1/2"	04905B	50 / BOX	10 BOXES	41.95
	3/4"	04907B	25 / BOX	10 BOXES	28.95

MC SNAP-IN CONNECTORS

Steel

- **APPLICATION:** Used to connect aluminum or steel AC, aluminum MC, and steel flexible metal conduit. Indoors only.
- **SUITABLE FOR:**
 - Aluminum and steel armored cable with #14/2 - #10/2 wire, steel flexible metal conduit, .45 diameter aluminum interlocked MC cable.



Contact us for Canadian regulatory listings.



	SIZE	PART #	PCS / PKG	TOTAL CTN QTY	CTN WT
UPC	3/8" (1/2" KO)	26571	5 / BAG	10 BAGS	4.09
BULK	3/8" (1/2" KO)	65705B	50 / BOX	10 BOXES	43.25

MC SNAP-IN DUPLEX CONNECTOR

Steel

- **APPLICATION:** Used to connect aluminum or steel AC and MC cables. Indoors only.
- **SUITABLE FOR:**
 - Aluminum and steel armored cable with #14-2 - #12-4 wire; steel MC cable with #14-2 - #10-2 wire; aluminum MC cable with #14-2 - #12-4 wire.



Contact us for Canadian regulatory listings.



	SIZE	PART #	PCS / PKG	TOTAL CTN QTY	CTN WT
BULK	3/8" (1/2" KO)	65805B	25 / BOX	10 BOXES	32.65

CUT-IN SNAP LOCK CONNECTOR

Steel

- **APPLICATION:** These connectors provide significant labor savings when connecting metal clad or armored cable in old work electrical box installations. Indoors only.



Contact us for Canadian regulatory listings.



	SIZE	PART #	PCS / PKG	TOTAL CTN QTY	CTN WT
UPC	3/8" (1/2" KO)	25803	5 / BAG	25 BAGS	3.17
BULK	3/8" (1/2" KO)	85803NB	25 / BOX	10 BOXES	8.75



HALEX®

BEYOND THE CURRENT

HALEX, a Scott Fetzer company | halexco.com

MC-AC-FLEX DOUBLE SNAP CONNECTOR

Zinc Die Cast

- **APPLICATION:** Used for installing metal clad or armored cable to steel boxes or enclosures. Indoors only.
- **SUITABLE FOR:**
 - AL and steel AC 14-2 to 10-3
 - AL and steel MC / MCI - A / HCF 14-2 to 10-3
 - AL and steel 3/8" FMC / RWFMC



Contact us for Canadian regulatory listings.



	SIZE	PART #	PCS / PKG	TOTAL CTN QTY	CTN WT
UPC	3/8" (1/2" KO)	25703	5 / BAG	20 BAGS	6.26
CCP	3/8" (1/2" KO)	85703NB	50 / CCP	4 CCP's	33.66

90° CONNECTORS

Zinc Die Cast

- **APPLICATION:** Used to connect flexible metal conduit, aluminum and steel AC and MC cable to a steel outlet box or other metal enclosure. Indoors only.
- **SUITABLE FOR:**
 - 3/8" - 3/4" steel and aluminum armored cable, steel and aluminum interlocked metal clad cable, flexible cord, and flexible metal conduit
 - 1" - 4" flexible metal conduit



Contact us for Canadian regulatory listings.

	SIZE	PART #	PCS / PKG	TOTAL CTN QTY	CTN WT
UPC	3/8" (1/2" KO)	91100	1 / BAG	25 BAGS	2.36
	1/2"	91101	1 / BAG	20 BAGS	2.74
	3/4"	91102	1 / BAG	10 BAGS	2.03
	1"	11010	1	5	1.70
	1 1/4"	11012	1	3	1.53
	1 1/2"	11015	1	4	4.63
CCP	3/8" (1/2" KO)	11001B	35 / CCP	4 CCP's	33.30
BULK	1/2"	11005B	25 / BOX	10 BOXES	33.75
	3/4"	11007B	10 / BOX	10 BOXES	21.48
	1"	11010B	5 / BOX	10 BOXES	17.25
	1 1/4"	11012B	10 / BOX	4 BOXES	20.01
	1 1/2"	11015B	5 / BOX	1 BOXES	5.39
	2"	11020B	5 / BOX	1 BOXES	6.07
	2 1/2"	11025B	2 / BOX	1 BOXES	6.43
	3"	11030B	1 / BOX	1 BOXES	3.66
4"	11040B	1 / BOX	1 BOXES	7.88	



WITH INSULATED THROAT

UPC	3/8" (1/2" KO)	91003	1 / BAG	25 BAGS	1.33
	1/2"	29101	5 / BAG	5 BAGS	3.21
	3/4"	29102	5 / BAG	5 BAGS	5.28
	1"	91010	1	5	1.63
BULK	3/8" (1/2" KO)	91003B	25 / BOX	10 BOXES	21.75
	1/2"	91005B	25 / BOX	10 BOXES	37.51
	3/4"	91007B	10 / BOX	10 BOXES	22.25



AC / MC ONE-HOLE STRAP

Steel



- **APPLICATION:** Used to secure AC / MC cable range of .475 to .580 to a wood, masonry or similar surface. 0.196in hole size. Indoors only.



Contact us for Canadian regulatory listings.

	SIZE	PART #	PCS / PKG	TOTAL CTN QTY	CTN WT
UPC	3/8"	26211	10 / BAG	20 BAGS	2.39
CCP	3/8"	62180B	200 / CCP	4 CCP's	50.00

ANTI-SHORT BUSHINGS

Polyethylene

- **APPLICATION:** Used to protect wire within flexible metallic conduit. Indoors only.

¹ Fits cable range: 14/2, 14/3, 12/2

² Fits cable range: 14/2, 12/3, 6/1, 4/1

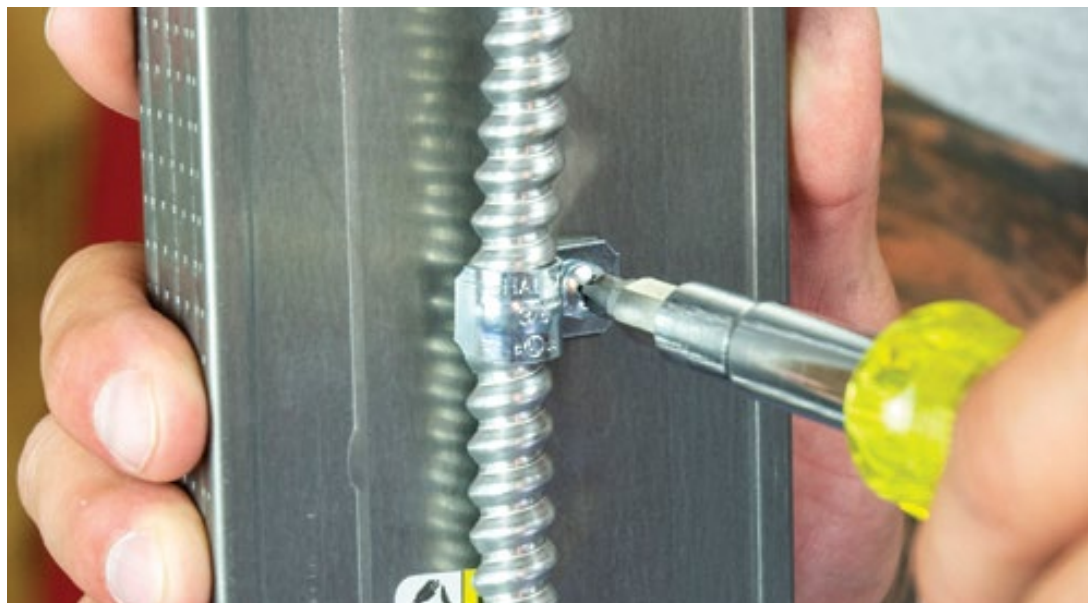
³ Fits cable range: 12/4, 10/2, 10/3, 2/1



Contact us for Canadian regulatory listings.



	SIZE	PART #	PCS / PKG	TOTAL CTN QTY	CTN WT
UPC	0 (5/16")	75400 ¹	35 / BAG	10 BAGS	0.56
	1 (3/8")	75401 ²	35 / BAG	10 BAGS	0.60
	2 (7/16")	75402 ³	35 / BAG	5 BAGS	0.48
	3 (1/2")	75403 ³	20 / BAG	5 BAGS	0.58
	4 (3/4")	75404 ³	16 / BAG	4 BAGS	0.42
BULK	0 (5/16")	75400BP ¹	1000 / BOX	1 BOX	0.88
	1 (3/8")	75401BP ²	1000 / BOX	1 BOX	2.28
	2 (7/16")	75402BP ³	500 / BOX	1 BOX	1.28
	3 (1/2")	75403BP ³	250 / BOX	1 BOX	1.64
	4 (3/4")	75404BP ³	250 / BOX	1 BOX	1.28



HALEX®

BEYOND THE CURRENT

HALEX, a Scott Fetzer company | halexco.com



- *Push-In Cable Connectors36*
- *Plastic Cable Connectors36*
- *Clamp Connectors..... 37*
- *Clamp Connectors Service Entrance37*
- *Clamp Connectors Snap-In38*
- *Clamp Connectors Two-Piece38*
- *Clamp Connectors Combination38*
- *Saddle Connectors.....39*
- *Duplex Connectors.....39*
- *Water-Tight UF Connectors39*
- *EMT-To-Non-Metallic Combination Couplings40*
- *One-Hole Straps40*

NON-METALLIC SHEATHED CABLE FITTINGS

PUSH-IN CABLE CONNECTORS

Nylon

- APPLICATION:** Used to connect non-metallic sheathed cable to a steel outlet box or other metal enclosure. Quick, easy two-step installation. Snap-in style. No screws or locknuts required. Dry location.



Contact us for Canadian regulatory listings.



	SIZE	PART #	PCS / PKG	TOTAL CTN QTY	CTN WT
UPC	3/8" (1/2" KO)	27511	5 / BAG	15 BAGS	0.70
	3/8" (1/2" KO)	27500	10 / BAG	10 BAGS	0.55
	3/8" (1/2" KO)	27510	25 / BAG	5 BAGS	0.65
	3/4"	27512	5 / BAG	10 BAGS	0.66
	3/4"	27507	10 / BAG	5 BAGS	0.65
CCP	3/8" (1/2" KO)	75105B	100 / CCP	4 CCP's	8.08

PLASTIC CABLE CONNECTORS

PVC

- APPLICATION:** Used to connect non-metallic sheathed cable to a steel outlet box or other metal enclosure. Snap-in design. Dry location.



Contact us for Canadian regulatory listings.



	SIZE	PART #	PCS / PKG	TOTAL CTN QTY	CTN WT
UPC	1/2"	27515	5 / BAG	10 BAGS	1.40
	3/4"	27516	5 / BAG	10 BAGS	0.37
CCP	1/2"	75111B	35 / CCP	4 CCP's	11.54
BULK	3/4"	75102B	25 / BOX	10 BOXES	8.07



CLAMP CONNECTORS

Zinc Die Cast

- **APPLICATION:** Used to connect non-metallic sheathed cable to a steel outlet box or other metal enclosure. Dry location.



Contact us for Canadian regulatory listings.

¹ Fits NM cable: #14/2, 12/2, 12/3, AWG or 2 #14/2 AWG

² Fits NM cable: #12/3 - 8/3 AWG or flex cord .460 - .720" diameter

³ Fits NM cable: #14/2 - 6/3 AWG or 3 #10/3 AWG or flex cord .450 - .730" diameter

⁴ Fits NM cable: #6/3 - 2/3 AWG or flex cord .800 - 1.350" diameter; or SE cable 3 conductor or 3 #1/0 min; 3 conductor or 3 #2/0 max

⁵ Fits NM cable, flex cords, multi-flex cords; fitting range .835 - 1.520" diameter or SE cable 2 conductor 4/0

⁶ Fits NM cable, flex cords, multi-flex cords; fitting range 1.085 - 1.520" diameter

	SIZE	PART #	PCS / PKG	TOTAL CTN QTY	CTN WT
UPC	3/8" (1/2" KO)	20511 ¹	5 / BAG	75 BAGS	17.86
	3/4"	20512 ²	5 / BAG	15 BAGS	6.63
	1"	90513 ³	1 / BAG	15 BAGS	2.28
	1 1/4"	90514 ⁴	1 / BAG	10 BAGS	2.23
	1 1/2"	05115 ⁵	1	5	1.68
	2"	05120 ⁶	1	5	2.13
CCP	3/8" (1/2" KO)	05103B ¹	100 / CCP	4 CCP's	47.72
	3/4"	05107B ²	50 / CCP	4 CCP's	41.36
	1"	05110B ³	25 / CCP	4 CCP's	33.10
BULK	1 1/4"	05112B ⁴	10 / BOX	10 BOXES	21.49
	1 1/2"	05115B ⁵	5 / BOX	10 BOXES	22.25
	2"	05120B ⁶	10 / BOX	10 BOXES	45.83



CLAMP CONNECTORS - SERVICE ENTRANCE

Zinc / Steel

- **APPLICATION:** Used to connect oval service cable to steel outlet box or other metal enclosure. Dry location.



Contact us for Canadian regulatory listings.

¹ Fits SE oval cable: 1.065 x 0.635 - 1.250" x 0.740

² Fits SE oval cable: 1.405 x 0.875 - 1.450" x 0.857

	SIZE	PART #	PCS / PKG	TOTAL CTN QTY	CTN WT
UPC	1 1/4"	05312 ¹	1	10	2.06
	1 1/2"	05315 ¹	1	5	1.08
	2"	05320 ²	1	5	4.49
BULK	1 1/4"	05312B ¹	10 / BOX	10 BOXES	21.49
	1 1/2"	05315B ¹	5 / BOX	10 BOXES	11.64
	2"	05320B ²	10 / BOX	4 BOXES	18.88



CLAMP CONNECTORS - SNAP-IN

Zinc

- APPLICATION:** Used to connect non-metallic sheathed cable to a steel outlet box or other metal enclosure. Snap-in design for quick, easy installation and no locknuts required. Dry location.

¹ Fits NM cable: #14/2 - 12/2 or flex cord .209 - .450" diameter

² Fits NM cable: #10/3 - 8/2, SE oval 0.36 x 0.61 - 0.51 x 0.80 or SER cable 0.05 - 0.75" diameter



Contact us for Canadian regulatory listings.



	SIZE	PART #	PCS / PKG	TOTAL CTN QTY	CTN WT
UPC	3/8" (1/2" KO)	20517¹	2 / BAG	25 BAGS	2.20
	3/8" (1/2" KO)	20515¹	10 / BAG	10 BAGS	4.28
	3/4"	20518²	2 / BAG	10 BAGS	1.00
CCP	3/8" (1/2" KO)	85103NB¹	100 / CCP	4 CCP's	44.76
BULK	3/4"	85107NB²	50 / BOX	10 BOXES	38.75

CLAMP CONNECTORS - TWO-PIECE

Zinc Electro-Plated Steel

- APPLICATION:** Used to secure #14 - #10 non-metallic sheathed cable to a steel outlet box or other metal enclosure. No locknut is required. Dry location.

¹ NM cable wire range .160 - .560

² NM cable wire range .200 - .850

³ NM cable wire range .250 - 1.000

⁴ NM cable wire range .312 - 1.200



	SIZE	PART #	PCS / PKG	TOTAL CTN QTY	CTN WT
UPC	3/8" (1/2" KO)	26510¹	5 / BAG	10 BAGS	2.08
	3/4" - 1"	26512²	5 / BAG	10 BAGS	2.99
	1 1/4"	26514³	2 / BAG	5 BAGS	1.45
	1 1/2"	26515⁴	2 / BAG	5 BAGS	1.64
BULK	3/8" (1/2" KO)	65103B¹	100 / BOX	10 BOXES	38.51
	3/4" - 1"	65110B²	50 / BOX	10 BOXES	37.51
	1 1/4"	65112B³	25 / BOX	10 BOXES	30.23

CLAMP CONNECTORS - COMBINATION

Zinc Die Cast

- APPLICATION:** Used to connect flexible metallic conduit, AC, MC, or NM cable to steel outlet box or other enclosure. Miscellaneous: 3/8" size fits 1/2" knockout. Dry location.

Fits AC cable - steel 14/2 - 10/2, 0.463 - 0.59 and aluminum 14/2 - 10/2, 0.47 - 0.552;

MCI cable - steel 14/2 - 10/3, 0.46 - 0.55 and aluminum 14/2 - 10/3 0.465 - 0.585; MCI-A cable -

aluminum 12/2 - 10/2, 0.435 - 0.518; HCF MCI-A cable - aluminum 12/2-10/2, 0.416 - 0.495; FMC steel and aluminum 3/8"



Contact us for Canadian regulatory listings.



	SIZE	PART #	PCS / PKG	TOTAL CTN QTY	CTN WT
UPC	3/8" (1/2" KO)	20570	5 / BAG	30 BAGS	7.61
CCP	3/8" (1/2" KO)	05711B	50 / CCP	10 CCP's	26.18

SADDLE CONNECTORS

Zinc Die Cast

- APPLICATION:** Used to connect flexible metallic conduit, AC, MC and NM sheathed cable to a steel outlet box or other metal enclosure. Dry location.



Contact us for Canadian regulatory listings.



	SIZE	PART #	PCS / PKG	TOTAL CTN QTY	CTN WT
UPC	3/8" (1/2" KO)	20670	5 / BAG	10 BAGS	3.58
CCP	3/8" (1/2" KO)	06703B	50 / CCP	4 CCP's	37.06

INSULATED THROAT

BULK	3/8" (1/2" KO)	86703B	50 / BOX	10 BOXES	37.15
------	----------------	--------	----------	----------	-------

DUPLEX CONNECTORS

Zinc Die Cast

- APPLICATION:** Used to connect two pieces of flexible metallic conduit, AC, MC, or NM sheathed cable, to a steel outlet box or other metal enclosure when using only one knockout opening. Dry location.



Contact us for Canadian regulatory listings.

- SUITABLE FOR:**
 - #14-2 thru #12-3 wire with ground NM sheathed cable
 - #14-2 wire steel armored cable
 - #14-2 wire with ground aluminum armored cable
 - 3/8" FMC, aluminum smooth sheath metal clad cable 0.410 - 0.500" diameter
 - 3/8" FMC, aluminum interlocked metal clad cable 0.460 - 0.538" diameter
 - 3/8" FMC, steel interlocked metal clad cable 0.438 - 0.560" diameter



	SIZE	PART #	PCS / PKG	TOTAL CTN QTY	CTN WT
UPC	3/8" (1/2" KO)	21580	2 / BAG	10 BAGS	2.44
CCP	3/8" (1/2" KO)	15803B	25 / CCP	4 CCP's	30.84

WATER-TIGHT UF CONNECTORS

Zinc Die Cast

- APPLICATION:** Used to secure #14 - #12 UF cable to a waterproof box with threaded hub. Dry location.



Contact us for Canadian regulatory listings.



	SIZE	PART #	PCS / PKG	TOTAL CTN QTY	CTN WT
UPC	1/2"	90661	1 / BAG	5 BAGS	0.65
	3/4"	90662	1 / BAG	10 BAGS	1.68
BULK	1/2"	06605B	25 / BOX	10 BOXES	25.83
	3/4"	06607B	25 / BOX	10 BOXES	37.83



EMT-TO-NON-METALLIC COMBINATION COUPLINGS

Zinc Die Cast

- **APPLICATION:** Used to join EMT conduit to non-metallic sheathed cable. Dry location.



Contact us for Canadian regulatory listings.

	SIZE	PART #	PCS / PKG	TOTAL CTN QTY	CTN WT
UPC	1/2"	91530	1 / BAG	15 BAGS	1.25
CCP	1/2"	15301B	25 / CCP	4 CCP's	17.58
BULK	1/2"	15303B	50 / BOX	10 BOXES	32.25

ONE-HOLE STRAPS

Steel

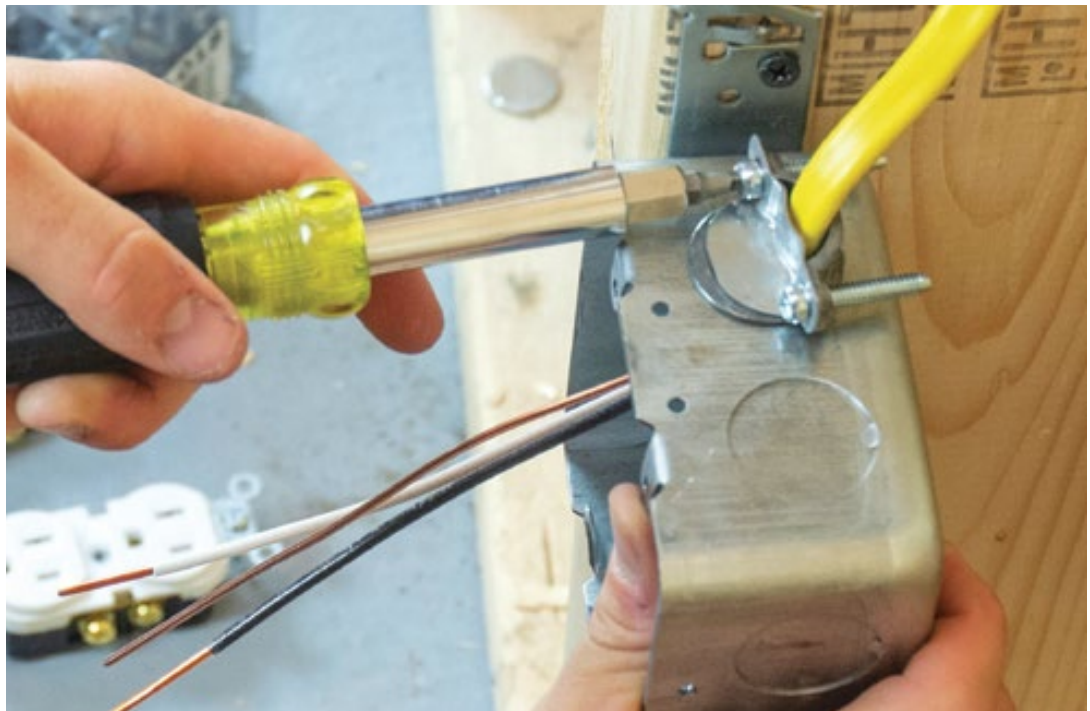
- **APPLICATION:** Used to secure non-metallic sheathed cable or service entrance cable (SEU, SE) to a wood, masonry or similar surface. Dry location.



Contact us for Canadian regulatory listings.



	SIZE	PART #	PCS / PKG	TOTAL CTN QTY	CTN WT
UPC	#12/2 - #14/2	26210	10 / BAG	10 BAGS	1.29
BULK	#12/2 - #14/2	62171B	100 / BOX	10 BOXES	13.83





LIQUID-TIGHT CONDUIT FITTINGS

- *Straight Liquid-Tight Connectors
One-Piece.....42*
- *Straight Liquid-Tight Connectors
Multi-Piece.....42*
- *90 Degree Liquid-Tight Connectors
One-Piece.....43*
- *90 Degree Liquid-Tight Connectors
Multi-Piece.....43*
- *Straight Liquid-Tight Connectors
Malleable Iron.....44*
- *45 Degree Liquid-Tight Connectors
Malleable Iron.....44*
- *90 Degree Liquid-Tight Connectors
Malleable Iron.....45*
- *Straight Quick-Set Liquid Tight
Connectors45*
- *90 Degree Quick-Set Liquid Tight
Connectors46*
- *Screw-In Couplings.....46*
- *AC Whips.....46*

STRAIGHT LIQUID TIGHT CONNECTORS - ONE-PIECE

Zinc Die Cast

- **APPLICATION:** Use to connect flexible metallic or type B non-metallic liquid tight conduit to a steel outlet box or other metal enclosure or hub. Indoors or outdoors.
- **FEATURES:** Straight connection. One-piece design allows for quick and easy installation.



Contact us for Canadian regulatory listings.



	SIZE	PART #	PCS / PKG	TOTAL CTN QTY	CTN WT
UPC	3/4"	90362	1 / BAG	10 BAGS	2.25
BULK	1/2"	06305B	25 / BOX	4 BOXES	15.14
	3/4"	06307B	10 / BOX	10 BOXES	22.83

WITH INSULATED THROAT

BULK	3/4"	86307B	10 / BOX	10 BOXES	22.83
------	------	---------------	----------	----------	-------

STRAIGHT LIQUID TIGHT CONNECTORS - MULTI-PIECE

Zinc Die Cast

- **APPLICATION:** Use to connect flexible metallic or type B non-metallic liquid tight conduit to a steel outlet box or other metal enclosure or hub. Indoors or outdoors.
- **FEATURES:** Multi-piece straight connection



Contact us for Canadian regulatory listings.



	SIZE	PART #	PCS / PKG	TOTAL CTN QTY	CTN WT
UPC	1/2"	91625	1	20	3.09
	3/4"	91627	1	15	3.48
	1"	16210	1	10	3.59
BULK	3/8"	16203B	25 / BOX	4 BOXES	16.14
	1/2"	16205B	25 / BOX	4 BOXES	14.20
	3/4"	16207B	10 / BOX	10 BOXES	19.25
	1"	16210B	10 / BOX	10 BOXES	28.95
	1 1/4"	16212B	4 / BOX	10 BOXES	25.05
	1 1/2"	16215B	2 / BOX	10 BOXES	15.83
	2"	16220B	2 / BOX	10 BOXES	18.39

WITH INSULATED THROAT

BULK	3/4"	96207B	10 / BOX	10 BOXES	22.83
	1 1/4"	96212B	4 / BOX	10 BOXES	25.05
	1 1/2"	96215B	2 / BOX	10 BOXES	16.51
	2 1/2"	96225B	1 / BOX	1 BOX	2.21
	3"	96230B	1 / BOX	1 BOX	3.22



90° LIQUID TIGHT CONNECTORS - ONE-PIECE

Zinc Die Cast

- **APPLICATION:** Use to connect flexible metallic or type B non-metallic conduit to a steel outlet box or other metal enclosure. Indoors or outdoors.
- **FEATURES:** 90 degree connection. One-piece design allows for quick and easy installation.



Contact us for Canadian regulatory listings.



	SIZE	PART #	PCS / PKG	TOTAL CTN QTY	CTN WT
UPC	1/2"	90681	1 / BAG	15 BAGS	2.94
	3/4"	90682	1 / BAG	10 BAGS	2.98
BULK	1/2"	06805B	25 / BOX	4 BOXES	19.54

90° LIQUID TIGHT CONNECTORS - MULTI-PIECE

Zinc Die Cast

- **APPLICATION:** Use to connect flexible metallic or type B non-metallic liquid tight conduit to a steel outlet box or other metal enclosure or hub. Indoors or outdoors.
- **FEATURES:** Multi-piece 90 degree connection



Contact us for Canadian regulatory listings.



	SIZE	PART #	PCS / PKG	TOTAL CTN QTY	CTN WT
UPC	1/2"	91695	1	15	3.27
	3/4"	91697	1	10	2.86
	1"	16910	1	5	2.38
BULK	3/8"	16903B	25 / BOX	4 BOXES	21.14
	1/2"	16905B	25 / BOX	4 BOXES	22.38
	3/4"	16907B	10 / BOX	10 BOXES	28.25
	1"	16910B	5 / BOX	10 BOXES	35.25
	1 1/4"	16914B	4 / BOX	10 BOXES	44.51
	1 1/2"	16915B	2 / BOX	10 BOXES	28.51
	2"	16920B	2 / BOX	10 BOXES	41.71

WITH INSULATED THROAT

BULK	2"	96920B	2 / BOX	10 BOXES	41.71
	2 1/2"	96925B	1 / BOX	1 BOX	3.80



STRAIGHT LIQUID TIGHT CONNECTORS

Malleable Iron

- **APPLICATION:** Use to connect flexible metallic liquid tight conduit to a steel outlet box or other metal enclosure or hub. Indoors or outdoors.
- **FEATURES:** Straight connection



Contact us for Canadian regulatory listings.



	SIZE	PART #	PCS / PKG	TOTAL CTN QTY	CTN WT
UPC	1/2"	66205	1 / BAG	15 BAGS	2.80
	3/4"	66206	1 / BAG	10 BAGS	2.20
	1"	66210	1 / BAG	5 BAGS	1.60
BULK	3/8"	66203B	25 / BOX	4 BOXES	15.56
	1/2"	66205B	25 / BOX	4 BOXES	16.34
	3/4"	66206B	10 / BOX	10 BOXES	31.83
	1"	66210B	5 / BOX	4 BOXES	11.68
	1 1/4"	66212B	5 / BOX	4 BOXES	12.34
	1 1/2"	66215B	2 / BOX	10 BOXES	16.23
	2"	66220B	2 / BOX	10 BOXES	28.85

WITH INSULATED THROAT



UPC	1/2"	86205	1 / BAG	15 BAGS	2.80
	3/4"	86207	1 / BAG	10 BAGS	2.20
BULK	1/2"	86205B	25 / BOX	4 BOXES	16.34
	3/4"	86207B	10 / BOX	10 BOXES	24.15
	1"	86210B	5 / BOX	4 BOXES	8.79
	1 1/4"	86212B	5 / BOX	4 BOXES	12.34
	1 1/2"	86215B	2 / BOX	10 BOXES	16.23
	2"	86220B	2 / BOX	10 BOXES	28.85
	2 1/2"	86225B	1 / BOX	1 BOX	2.62
	3"	86230B	1 / BOX	1 BOX	3.91
	4"	86240B	1 / BOX	1 BOX	6.56

45° LIQUID TIGHT CONNECTORS

Malleable Iron

- **APPLICATION:** Use to connect flexible metallic liquid tight conduit to a steel outlet box or other metal enclosure or hub. Indoors or outdoors.
- **FEATURES:** 45 degree connection



Contact us for Canadian regulatory listings.



	SIZE	PART #	PCS / PKG	TOTAL CTN QTY	CTN WT
BULK	3/8"	66503B	10 / BOX	10 BOXES	29.25
	1/2"	66505B	10 / BOX	10 BOXES	27.96
	3/4"	66507B	10 / BOX	4 BOXES	14.64
	1"	66510B	5 / BOX	4 BOXES	13.94
	1 1/4"	66512B	5 / BOX	4 BOXES	19.79
	1 1/2"	66515B	2 / BOX	10 BOXES	24.25
	2"	66520B	2 / BOX	10 BOXES	37.89

WITH INSULATED THROAT

BULK	2 1/2"	86525B	1 / BOX	1 BOX	4.94
------	--------	---------------	---------	-------	------

90° LIQUID TIGHT CONNECTORS

Malleable Iron

- **APPLICATION:** Use to connect flexible metallic liquid tight conduit to a steel outlet box or other metal enclosure or hub. Indoors or outdoors.
- **FEATURES:** 90 degree connection



Contact us for Canadian regulatory listings.



	SIZE	PART #	PCS / PKG	TOTAL CTN QTY	CTN WT
UPC	1/2"	66905	1 / BAG	15 BAGS	4.0
	3/4"	66907	1 / BAG	10 BAGS	4.0
	1"	66910	1 / BAG	5 BAGS	2.8
BULK	1/2"	66905B	10 / BOX	10 BOXES	30.75
	3/4"	66907B	10 / BOX	4 BOXES	19.14
	1"	66910B	5 / BOX	4 BOXES	16.34
	1 1/4"	66912B	5 / BOX	4 BOXES	24.83
	1 1/2"	66915B	2 / BOX	10 BOXES	31.89
	2"	66920B	2 / BOX	10 BOXES	42.51

WITH INSULATED THROAT

UPC	1/2"	86905	1 / BAG	15 BAGS	2.8
	3/4"	86907	1 / BAG	10 BAGS	2.2
BULK	1/2"	86905B	10 / BOX	10 BOXES	31.25
	3/4"	86907B	10 / BOX	4 BOXES	19.14
	1"	86910B	5 / BOX	4 BOXES	16.34
	1 1/4"	86912B	5 / BOX	4 BOXES	24.83
	1 1/2"	86915B	2 / BOX	10 BOXES	27.25
	2 1/2"	86925B	1 / BOX	1 BOX	6.12
	3"	86930B	1 / BOX	1 BOX	8.73



STRAIGHT QUICK-SET LIQUID TIGHT CONNECTORS

Nylon

- **APPLICATION:** Use to connect type B non-metallic liquid tight conduit to a weatherproof outlet box, pool/spa equipment motor, central air conditioning unit or various other electrical enclosures or hubs. Indoors or outdoors.
- **FEATURES:** Straight connection



Contact us for Canadian regulatory listings.



	SIZE	PART #	PCS / PKG	TOTAL CTN QTY	CTN WT
UPC	3/8"	27620	1 / BAG	25 BAGS	1.87
	1/2"	27621	1	30	1.72
	3/4"	27622	1	20	1.54
	1"	97623	1	15	0.93
BULK	1/2"	76205B	25 / BOX	4 BOXES	7.52
	3/4"	76207B	10 / BOX	10 BOXES	11.59
	1"	76210B	5 / BOX	10 BOXES	8.25
	1 1/4"	76212B	5 / BOX	1 BOX	1.24
	1 1/2"	76215B	2 / BOX	1 BOX	0.64
	2"	76220B	2 / BOX	1 BOX	1.01

90° QUICK-SET LIQUID TIGHT CONNECTORS

Nylon

- **APPLICATION:** Use to connect type B non-metallic liquid tight conduit to a weatherproof outlet box, pool/spa equipment motor, central air conditioning unit or various other electrical enclosures or hubs. Indoors or outdoors.
- **FEATURES:** 90 degree connection



Contact us for Canadian regulatory listings.



	SIZE	PART #	PCS / PKG	TOTAL CTN QTY	CTN WT
UPC	3/8"	27690	1 / BAG	15 BAGS	1.61
	1/2"	27691	1	20	1.51
	3/4"	27692	1	15	1.23
	1"	97693	1	10	1.03
BULK	1/2"	76905B	10 / BOX	10 BOXES	9.45
	3/4"	76907B	10 / BOX	10 BOXES	12.51
	1"	76910B	5 / BOX	10 BOXES	10.60
	1 1/4"	76912B	5 / BOX	5 BOXES	9.47
	1 1/2"	76915B	2 / BOX	5 BOXES	5.13
	2"	76920B	2 / BOX	5 BOXES	8.18

SCREW-IN COUPLINGS

PVC

- **APPLICATION:** Use to connect two lengths of type B non-metallic liquid tight conduit. Indoors or outdoors.



Contact us for Canadian regulatory listings.



	SIZE	PART #	PCS / PKG	TOTAL CTN QTY	CTN WT
UPC	1/2"	97451	1 / BAG	10 BAGS	0.72
	3/4"	97452	1 / BAG	10 BAGS	0.86
BULK	1/2"	74505B	30 / BOX	1 BOX	1.81
	3/4"	74507B	25 / BOX	1 BOX	1.92

AC WHIPS

PVC

- **APPLICATION:** Use to connect AC disconnects to AC compressors. Indoors or outdoors.



Contact us for Canadian regulatory listings.



	SIZE	PART #	PCS / PKG	TOTAL CTN QTY	CTN WT
UPC	1/2" x 6'	69126	1 / BAG	6 BAGS	12.0
	3/4" x 6'	69346	1 / BAG	6 BAGS	16.4



- *Set-Screw Compression Connectors and Couplings*48-52
- *Elbows*52-54
- *Nipples*55-57
- *Water-Tight Conduit Hubs*.....58
- *Spacers and Bushings*.....58-60
- *Locknuts*61-62
- *Washers*.....63
- *Reducing Bushings*.....64
- *Straps*64-66
- *Conduit Bodies*67-69
- *Conduit Body Covers and Gaskets*.....70

RIGID CONDUIT FITTINGS

SET-SCREW CONNECTORS

Zinc Die Cast

- **APPLICATION:** Used to connect EMT, Rigid or IMC conduit to steel outlet box, load center, or other metal enclosure. Indoors only.



Contact us for Canadian regulatory listings.



	SIZE	PART #	PCS / PKG	TOTAL CTN QTY	CTN WT
UPC	3"	12130	1	12	9.94
BULK	2 1/2"	12125B	12 / BOX	1 BOX	9.82
	3"	12130B	12 / BOX	1 BOX	12.73
	3 1/2"	12135B	10 / BOX	1 BOX	12.29
	4"	12140B	6 / BOX	1 BOX	9.24

WITH INSULATED THROAT

BULK	3 1/2"	92135B	10 / BOX	1 BOX	12.35
------	--------	---------------	----------	-------	-------

SET-SCREW CONNECTORS

Steel

- **APPLICATION:** Used to connect EMT, Rigid or IMC conduit to steel outlet box, load center, or other metal enclosure. Indoors only.



Contact us for Canadian regulatory listings.



	SIZE	PART #	PCS / PKG	TOTAL CTN QTY	CTN WT
UPC	2 1/2"	62725	1	3	3.95
BULK	2 1/2"	62725B	12 / BOX	1 BOX	15.22
	3 1/2"	62735B	6 / BOX	1 BOX	10.64
	4"	62740B	6 / BOX	1 BOX	15.19

WITH INSULATED THROAT

BULK	4"	82740B	6 / BOX	1 BOX	15.16
------	----	---------------	---------	-------	-------



SET-SCREW COUPLINGS

Zinc Die Cast

- **APPLICATION:** Use to join two lengths of EMT, Rigid or IMC conduit together. Indoors only.



Contact us for Canadian regulatory listings.



	SIZE	PART #	PCS / PKG	TOTAL CTN QTY	CTN WT
BULK	2 1/2"	12225B	12 / BOX	1 BOX	10.28
	3"	12230B	12 / BOX	1 BOX	13.10
	4"	12240B	6 / BOX	1 BOX	10.43

SET-SCREW COUPLINGS

Steel

- **APPLICATION:** Use to join two lengths of EMT, Rigid or IMC conduit together. Indoors only.



Contact us for Canadian regulatory listings.



	SIZE	PART #	PCS / PKG	TOTAL CTN QTY	CTN WT
UPC	2 1/2"	62825	1	3	5.33
	3"	62830	1	3	5.45
BULK	2 1/2"	62825B	12 / BOX	1 BOX	20.74
	3"	62830B	12 / BOX	1 BOX	21.93
	3 1/2"	62835B	6 / BOX	1 BOX	13.64

COMPRESSION CONNECTORS

Zinc Die Cast

- **APPLICATION:** Use to connect EMT, threadless Rigid or IMC conduit to a steel outlet box, load center, or other metal enclosure. Indoors only.



Contact us for Canadian regulatory listings.



	SIZE	PART #	PCS / PKG	TOTAL CTN QTY	CTN WT
BULK	2 1/2"	02125B	12 / BOX	1 BOX	13.84
	3"	02130B	12 / BOX	1 BOX	16.86
	3 1/2"	02135B	10 / BOX	1 BOX	17.63
	4"	02140B	6 / BOX	1 BOX	12.49

COMPRESSION CONNECTORS

Steel

- **APPLICATION:** Use to join threadless Rigid or IMC conduit to a steel outlet box or other metal enclosure. Indoors only.



Contact us for Canadian regulatory listings.



	SIZE	PART #	PCS / PKG	TOTAL CTN QTY	CTN WT
UPC	1/2"	26351	2 /BAG	8 BAGS	2.20
	3/4"	26352	2 /BAG	2 BAGS	2.00
	1"	63510	1	10	3.13
	1 1/4"	63512	1	3	2.41
	1 1/2"	63515	1	3	2.17
	2"	63520	1	3	3.07
	2 1/2"	63525	1	2	2.81
	3"	63530	1	2	3.09
BULK	1/2"	63505B	25 / BOX	4 BOXES	37.14
	3/4"	63507B	25 / BOX	4 BOXES	37.14
	1"	63510B	5 / BOX	1 BOX	1.60
	1 1/4"	63512B	5 / BOX	1 BOX	2.48
	1 1/2"	63515B	2 / BOX	1 BOX	1.51
	2"	63520B	2 / BOX	1 BOX	2.11
	2 1/2"	62325B	12 / BOX	1 BOX	21.96



WITH INSULATED THROAT

UPC	2 1/2"	82325	1	3	5.77
BULK	2 1/2"	82325B	12 / BOX	1 BOX	22.52
	3"	82330B	12 / BOX	1 BOX	23.04

COMPRESSION COUPLINGS

Zinc Die Cast

- **APPLICATION:** Use to join two lengths of EMT, threadless Rigid or IMC conduit together. Indoors only.



Contact us for Canadian regulatory listings.



	SIZE	PART #	PCS / PKG	TOTAL CTN QTY	CTN WT
BULK	2-1/2"	02225B	12 / BOX	1 BOX	15.95
	3"	02230B	12 / BOX	1 BOX	21.11
	4"	02240B	6 / BOX	1 BOX	15.12

COMPRESSION COUPLINGS

Steel

- **APPLICATION:** Use to join two lengths of threadless Rigid or IMC conduit together. Indoors only.



Contact us for Canadian regulatory listings.

	SIZE	PART #	PCS / PKG	TOTAL CTN QTY	CTN WT
UPC	1/2"	96361	1	10	1.74
	3/4"	96362	1	2	2.18
	1"	63610	1	10	4.45
	1 1/4"	63612	1	3	2.38
	1 1/2"	63615	1	3	2.68
	2"	63620	1	3	3.22
	2 1/2"	63625	1	3	4.68
	3"	63630	1	2	4.32
BULK	1/2"	63605B	10 / BOX	1 BOX	1.41
	3/4"	63607B	10 / BOX	1 BOX	2.14
	1"	63610B	5 / BOX	1 BOX	2.26
	1 1/4"	63612B	5 / BOX	1 BOX	3.99
	1 1/2"	63615B	2 / BOX	1 BOX	1.85
	2"	63620B	2 / BOX	1 BOX	2.24
	2 1/2"	62425B	12 / BOX	1 BOX	31.22
	3"	62430B	6 / BOX	1 BOX	16.59
4"	62440B	6 / BOX	1 BOX	28.91	



RIGID-TO-EMT COUPLINGS

Steel

- **APPLICATION:** Use to join EMT conduit to Rigid metal conduit. Indoors only.



Contact us for Canadian regulatory listings.

	SIZE	PART #	PCS / PKG	TOTAL CTN QTY	CTN WT
UPC	1/2" - 1/2"	91534	1 / BAG	10 BAGS	1.68
	3/4" - 3/4"	91536	1 / BAG	10 BAGS	2.70
BULK	1/2"	15304B	25 / BOX	1 BOX	3.96
	3/4"	15306B	25 / BOX	1 BOX	5.06



RIGID THREE-PIECE COUPLINGS

Malleable Iron

- **APPLICATION:** Use as a threaded coupling between lengths of threaded Rigid or IMC conduit, when neither can be rotated. Indoors or outdoors.



Contact us for Canadian regulatory listings.

	SIZE	PART #	PCS / PKG	TOTAL CTN QTY	CTN WT
BULK	3/4"	65507B	25 / BOX	1 BOX	6.64





ALUMINUM COUPLINGS

Aluminum



- **APPLICATION:** Use to join threaded Rigid or IMC conduit together. Indoors or outdoors.

Contact us for Canadian regulatory listings.

	SIZE	PART #	PCS / PKG	TOTAL CTN QTY	CTN WT
UPC	1 1/4"	54012	1	5	1.08
	2"	54020	1	3	1.09

RIGID COUPLINGS

Steel



- **APPLICATION:** Use to join threaded Rigid or IMC conduit together. Indoors or outdoors.

Contact us for Canadian regulatory listings.



	SIZE	PART #	PCS / PKG	TOTAL CTN QTY	CTN WT
UPC	1/2"	96401	1 / BAG	40 BAGS	5.32
	1/2"	64005	1	25	3.21
	3/4"	96402	1 / BAG	25 BAGS	4.81
	3/4"	64007	1	20	3.69
	1"	64010	1	10	2.88
	1 1/4"	64012	1	5	2.03
	1 1/2"	64015	1	5	2.89
	2"	64020	1	4	2.94
	2 1/2"	64025	1	1	1.79
	3"	64030	1	1	2.10
	3 1/2"	64035	1	1	3.89
BULK	1/2"	64001B	100 / BOX	1 BOX	12.37
	1/2"	64005B	100 / BOX	1 BOX	12.28
	3/4"	64007B	50 / BOX	1 BOX	9.23

RIGID TO RIGID PULL ELBOWS

Zinc Die Cast



- **APPLICATION:** Use as a wire pulling elbow to facilitate wire pulling through a sharp bend in a run of threaded Rigid or IMC conduit. Indoors or outdoors.

Contact us for Canadian regulatory listings.



	SIZE	PART #	PCS / PKG	TOTAL CTN QTY	CTN WT
UPC	1/2"	94105	1	15	2.75
	3/4"	94107	1	8	2.34
	1"	94110	1	5	2.68
BULK	1/2"	94105B	10 / BOX	10 BOXES	19.66
	3/4"	94107B	5 / BOX	10 BOXES	16.27

EMT/RIGID-TO-EMT/RIGID COMBO ELBOWS

Zinc Die Cast



- **APPLICATION:** Use as a wire pulling elbow to facilitate wire pulling through a sharp bend in a run of threaded Rigid or IMC conduit. RGD Indoors or outdoors. EMT indoor only.

Contact us for Canadian regulatory listings.



	SIZE	PART #	PCS / PKG	TOTAL CTN QTY	CTN WT
UPC	1/2"	94505	1	10	1.85
	3/4"	94507	1	10	3.01
	1"	94510	1	5	3.03



HALEX®

BEYOND THE CURRENT

HALEX, a Scott Fetzer company | halexco.com

EMT/RIGID-TO-BOX COMBO ELBOW

Zinc Die Cast

- APPLICATION:** Use to connect a run of threaded Rigid or IMC conduit to an outlet box or other metal enclosure. RGD Indoors or outdoors. EMT indoor only.



Contact us for Canadian regulatory listings.



	SIZE	PART #	PCS / PKG	TOTAL CTN QTY	CTN WT
UPC	1/2"	94705	1	10	1.99
	3/4"	94707	1	5	1.54

RIGID-TO-BOX PULL ELBOWS

Zinc Die Cast

- APPLICATION:** Use to connect a run of threaded Rigid or IMC conduit to an outlet box or other metal enclosure. Indoors or outdoors.



Contact us for Canadian regulatory listings.



	SIZE	PART #	PCS / PKG	TOTAL CTN QTY	CTN WT
WITHOUT GASKET					
UPC	1/2"	14205	1	10	2.09
	3/4"	14207	1	5	1.36
WITH GASKET					
BULK	1/2"	94205B	10 / BOX	10 BOXES	21.05
	3/4"	94207B	5 / BOX	10 BOXES	12.13

90° LARGE RADIUS ELBOWS

Zinc Die Cast

- APPLICATION:** Use to connect Rigid or IMC conduit to an outlet box where a large radius is desired, for example to accommodate larger gauge wire. Indoors or outdoors.



Contact us for Canadian regulatory listings.



	SIZE	PART #	PCS / PKG	TOTAL CTN QTY	CTN WT
BULK	1/2"	19205B	25 / BOX	1 BOX	3.06
	3/4"	19207B	10 / BOX	1 BOX	1.80

90° SHORT RADIUS ELBOWS

Zinc Die Cast

- APPLICATION:** Use to connect Rigid or IMC conduit to an outlet box where a close radius is desired. Indoors or outdoors.



Contact us for Canadian regulatory listings.



	SIZE	PART #	PCS / PKG	TOTAL CTN QTY	CTN WT
UPC	1/2"	19005	1 / BAG	20 BAGS	2.26
	3/4"	19007	1 / BAG	10 BAGS	1.90

45° RIGID ELBOWS

Steel

- **APPLICATION:** Use to allow a 45° change of direction in a run of Rigid or IMC conduit. Indoors or outdoors.



Contact us for Canadian regulatory listings.

	SIZE	PART #	PCS / PKG	TOTAL CTN QTY	CTN WT
BULK	1/2"	64205	10	1 BOX	4.46
	3/4"	64207	10	1 BOX	7.68
	1"	64210	25	1 BOX	48.65
	1 1/4"	64212	20	1 BOX	64.85
	1 1/2"	64215	15	1 BOX	62.80
	2"	64220	10	1 BOX	68.83
	3"	64230	1	1 BOX	14.00
	4"	64240	1	1 BOX	24.00



90° RIGID ELBOWS

Steel

- **APPLICATION:** Use to allow a 90° change of direction in a run of Rigid or IMC conduit. Indoors or outdoors.



Contact us for Canadian regulatory listings.

	SIZE	PART #	PCS / PKG	TOTAL CTN QTY	CTN WT
UPC	1/2"	64105	1	10	6.78
	3/4"	64107	1	5	5.12
	1"	64110	1	10	18.86
	1 1/4"	64112	1	5	15.91
	1 1/2"	64115	1	3	12.53
	2"	64120	1	1	6.16
	2 1/2"	64125	1	1	13.00
	3"	64130	1	1	19.31
BULK	4"	64140	1	1	33.40
	1/2"	64105B	50 / BOX	1 BOX	36.35
	3/4"	64107B	50 / BOX	1 BOX	55.85
	1"	64110B	20 / BOX	1 BOX	40.30
	1 1/4"	64112B	20 / BOX	1 BOX	62.00
	1 1/2"	64115B	10 / BOX	1 BOX	44.60
2"	64120B	10 / BOX	1 BOX	67.50	



90° ELBOWS - ALUMINUM

Aluminum

- **APPLICATION:** Use to allow a 90° change of direction in a run of Rigid or IMC conduit. Indoors or outdoors.



Contact us for Canadian regulatory listings.

	SIZE	PART #	PCS / PKG	TOTAL CTN QTY	CTN WT
UPC	1 1/4"	54112	1	5	6.39
	2"	54120	1	2	5.21



OFFSET NIPPLES

Zinc Die Cast

- **APPLICATION:** Use as an offset connector between two enclosures. Offsets the axis of the raceway by 3/4". Indoors or outdoors.



Contact us for Canadian regulatory listings.

	SIZE	PART #	PCS / PKG	TOTAL CTN QTY	CTN WT
UPC	1/2"	90401	1	15	1.62
	3/4"	90402	1	10	1.70
	1"	04010	1	10	2.15
	1 1/4"	04012	1	5	1.69
	1 1/2"	04015	1	4	1.82
	2"	04020	1	3	1.84
BULK	1/2"	04005B	10 / BOX	10 BOXES	11.73
	3/4"	04007B	10 / BOX	10 BOXES	17.12
	1"	04010B	10 / BOX	10 BOXES	21.49
	1 1/4"	04012B	5 / BOX	10 BOXES	16.71
	1 1/2"	04015B	5 / BOX	10 BOXES	22.66
	2"	04020B	2 / BOX	10 BOXES	12.57
	2 1/2"	04025B	2 / BOX	1 BOXES	2.87
3"	04030B	1 / BOX	1 BOXES	2.16	



CHASE NIPPLES

Zinc Die Cast

- **APPLICATION:** Use with a Rigid coupling to terminate threaded conduit to a knockout box or enclosure, where space within the box is limited. Used with a locknut to provide a short raceway between boxes or enclosures. Indoors or outdoors.



Contact us for Canadian regulatory listings.

	SIZE	PART #	PCS / PKG	TOTAL CTN QTY	CTN WT
UPC	1/2"	20701	2 / BAG	25 BAGS	1.91
	3/4"	90702	1 / BAG	20 BAGS	1.38
	1"	90703	1 / BAG	15 BAGS	1.59
	1 1/4"	07012	1	15	1.98
	1 1/2"	07015	1	10	1.87
	2"	07020	1	8	2.20
BULK	3"	07030	1	3	1.56
	1/2"	07005B	100 / BOX	10 BOXES	35.69
	3/4"	07007B	50 / BOX	10 BOXES	30.90
	1"	07010B	25 / BOX	10 BOXES	24.98
	1 1/4"	07012B	25 / BOX	10 BOXES	30.25
	1 1/2"	07015B	25 / BOX	1 BOX	4.54
	2"	07020B	10 / BOX	4 BOXES	11.88
	2 1/2"	07025B	10 / BOX	4 BOXES	17.20
3"	07030B	10 / BOX	4 BOXES	20.60	
4"	07040B	5 / BOX	4 BOXES	16.68	



CONDUIT NIPPLES

Steel

- **APPLICATION:** Use to connect two steel outlet boxes or other metal enclosures; use to extend a length of threaded Rigid or IMC conduit. Indoors or outdoors.



Contact us for Canadian regulatory listings.



	TRADE SIZE X LENGTH	PART #	PCS / PKG	TOTAL CTN QTY	CTN WT
UPC	1/2" x CLOSE	64305	1	20	1.31
	1/2" x 1-1/2"	64311	1 / BAG	25 BAGS	2.15
	1/2" x 2"	64325	1	15	2.10
	1/2" x 3"	64331	1	25	5.18
	1/2" x 4"	64341	1	15	4.05
	1/2" x 6"	64361	1	10	3.85
	3/4" x CLOSE	64307	1	20	2.09
	3/4" x 2"	64327	1	15	2.39
	3/4" x 3"	64332	1	20	5.78
	3/4" x 4"	64342	1	15	5.25
	3/4" x 6"	64362	1	10	5.26
	1" x CLOSE	64310	1	15	2.27
	1" x 2"	64313	1	10	2.03
	1" x 3"	64333	1	25	9.32
	1" x 5"	64353	1	10	6.63
	1" x 6"	64363	1	6	4.34
	1-1/4" x CLOSE	64312	1	10	2.35
	1-1/4" x 2"	64314	1	10	2.70
	1-1/4" x 3"	64334	1	5	2.50
	1-1/4" x 5"	64354	1	6	5.19
	1-1/4" x 6"	64364	1	6	5.84
	1-1/2" x CLOSE	64315	1	5	1.55
	1-1/2" x 2"	64615	1	5	1.85
	1-1/2" x 3"	64335	1	10	5.83
	1-1/2" x 6"	64365	1	4	4.54
2" x CLOSE	64320	1	4	2.32	
2" x 3"	64336	1	6	4.29	
2" x 5"	64356	1	6	8.40	
2" x 6"	64366	1	5	7.88	
2" x 7"	64676	1	3	6.64	
2" x 8"	64386	1	4	8.69	
BULK	1/2" x 5"	64351B	25 / BOX	1 BOX	8.49
	1/2" x 8"	64381B	1	1	0.52
	1/2" x 10"	64391B	1	1	0.70
	1/2" x 12"	64301B	1	1	0.80
	3/4" x 5"	64352B	25 / BOX	1 BOX	10.97
	3/4" x 8"	64382B	1	1	0.72
	3/4" x 10"	64392B	1	1	0.90
	3/4" x 12"	64302B	1	1	1.08

CONTINUATION OF CHART PROVIDED ON NEXT PAGE.

CONDUIT NIPPLES

CONTINUATION OF CHART FROM PREVIOUS PAGE.

TRADE SIZE X LENGTH	PART #	PCS / PKG	TOTAL CTN QTY	CTN WT
1" x 4"	64343B	25 / BOX	1 BOX	12.64
1" x 8"	64383B	1	1	1.10
1" x 10"	64393B	1	1	1.30
1" x 12"	64303B	1	1	3.80
1-1/4" x 8"	64384B	1	1	1.25
1-1/4" x 10"	64394B	1	1	1.80
1-1/2" x 4"	64345B	25 / BOX	1 BOX	20.53
1-1/2" x 5"	64355B	25 / BOX	1 BOX	26.37
1-1/2" x 8"	64385B	1	1	1.50
1-1/2" x 10"	64395B	1	1	2.00
2" x 4"	64346B	25 / BOX	1 BOX	24.66
2" x 10"	64396B	1	1	2.70
2" x 12"	64306B	1	1	3.06
2-1/2" x CLOSE	64617B	1	1	1.00
2-1/2" x 4"	64347B	1	1	1.50
2-1/2" x 5"	64357B	1	1	1.97
2-1/2" x 6"	64367B	1	1	2.40
2-1/2" x 8"	64387B	1	1	3.29
2-1/2" x 12"	64607B	1	1	5.05
BULK 3" x CLOSE	64618B	1	1	11.64
3" x 4"	64348B	1	1	2.00
3" x 5"	64358B	1	1	2.60
3" x 6"	64368B	1	1	3.00
3" x 8"	64388B	1	1	4.11
3" x 10"	64398B	1	1	5.28
3" x 12"	64608B	1	1	6.30
3-1/2" x CLOSE	64619B	1	1	19.20
3-1/2" x 6"	64369B	1	1	3.73
3-1/2" x 10"	64399B	1	1	6.55
4" x CLOSE	64620B	1	1	21.60
4" x 4"	64340B	1	1	2.85
4" x 5"	64350B	1	1	3.80
4" x 6"	64360B	1	1	4.40
4" x 8"	64380B	1	1	6.00
4" x 10"	64390B	1	1	7.75
4" x 12"	64300B	1	1	9.25



WATER-TIGHT CONDUIT HUBS

Zinc Die Cast

- **APPLICATION:** Use to connect Rigid or IMC conduit to a load center or other metal enclosure where a water-tight joint is required at knockouts or slip-fit holes. Indoors or outdoors.



Contact us for Canadian regulatory listings.



	SIZE	PART #	PCS / PKG	TOTAL CTN QTY	CTN WT
UPC	1/2"	91631	1	10	2.03
	3/4"	91632	1	10	2.85
	1"	16310	1	5	1.83
	1 1/4"	16312	1	5	2.83
	1 1/2"	16315	1	4	2.38
	2"	16320	1	3	3.09
BULK	2 1/2"	16325B	2 / BOX	1 BOX	3.35
	3 1/2"	16335B	1 / BOX	1 BOX	2.82
	4"	16340B	1 / BOX	1 BOX	3.26

BOX SPACERS

Zinc Die Cast

- **APPLICATION:** Use as a raceway between two steel outlet boxes or other metal enclosures. Indoors only.



Contact us for Canadian regulatory listings.



	SIZE	PART #	PCS / PKG	TOTAL CTN QTY	CTN WT
UPC	1/2"	91641	1 / BAG	25 BAGS	2.15
	3/4"	21642	2 / BAG	15 BAGS	3.63
BULK	1/2"	16405B	50 / BOX	10 BOXES	45.00
	3/4"	16407B	50 / BOX	10 BOXES	61.16

CONDUIT BUSHINGS

Steel

- **APPLICATION:** Use with locknut to terminate threaded Rigid or IMC conduit to an outlet box. Indoors or outdoors.



Contact us for Canadian regulatory listings.



	SIZE	PART #	PCS / PKG	TOTAL CTN QTY	CTN WT
BULK	1/2"	05205B	100 / BOX	10 BOXES	32.25
	2"	05220B	25 / BOX	10 BOXES	37.85
	4"	05240B	5 / BOX	10 BOXES	25.91

PLASTIC BUSHINGS

Thermoplastic

- **APPLICATION:** Use with locknut to terminate threaded Rigid or IMC conduit to an outlet box. Indoors or outdoors.



Contact us for Canadian regulatory listings.

	SIZE	PART #	PCS / PKG	TOTAL CTN QTY	CTN WT
UPC	1/2"	27520	4 / BAG	20 BAGS	0.58
	1/2"	27521	10 / BAG	15 BAGS	1.68
	3/4"	27527	4 / BAG	15 BAGS	0.64
	3/4"	27522	10 / BAG	10 BAGS	1.18
	1"	27528	2 / BAG	15 BAGS	0.65
	1 1/4"	27529	2 / BAG	15 BAGS	0.76
	1 1/2"	97525	1 / BAG	15 BAGS	0.51
	1 1/2"	27525	4 / BAG	5 BAGS	0.68
	2"	97526	1 / BAG	15 BAGS	0.72
	2"	27526	4 / BAG	5 BAGS	0.99
	2 1/2"	75225	1	8	0.62
	3"	75230	1	5	0.85
BULK	1/2"	75205B	100 / BOX	10 BOXES	7.03
	3/4"	75207B	100 / BOX	10 BOXES	12.25
	1"	75210B	50 / BOX	10 BOXES	10.55
	1 1/4"	75212B	25 / BOX	10 BOXES	7.70
	1 1/2"	75215B	25 / BOX	10 BOXES	8.20
	2"	75220B	25 / BOX	10 BOXES	10.41
	2 1/2"	75225B	10 / BOX	10 BOXES	13.51
	3"	75230B	10 / BOX	10 BOXES	16.30
	3 1/2"	75235B	5 / BOX	10 BOXES	13.25
4"	75240B	5 / BOX	10 BOXES	14.01	



INSULATED METALLIC GROUNDING BUSHING

Zinc Die Cast

- **APPLICATION:** Use with locknut to terminate service conduit to a cabinet. Lug provided for bonding jumper to a neutral bus bar. Indoors or outdoors.



Contact us for Canadian regulatory listings.



	SIZE	PART #	PCS / PKG	TOTAL CTN QTY	CTN WT
UPC	1/2"	29521	2 / BAG	10 BAGS	1.35
	3/4"	29522	2 / BAG	10 BAGS	1.88
	1"	29523	2 / BAG	10 BAGS	2.11
	1 1/2"	29525	2 / BAG	5 BAGS	1.91
	1 1/4"	99524	1 / BAG	10 BAGS	1.49
	2"	99526	1 / BAG	5 BAGS	1.19
	2 1/2"	95225	1	5	2.13
BULK	1/2"	95205B	25 / BOX	1 BOX	1.61
	3/4"	95207B	25 / BOX	1 BOX	1.86
	1"	95210B	25 / BOX	4 BOXES	10.14
	1 1/4"	95212B	20 / BOX	1 BOX	2.74
	1 1/2"	95215B	20 / BOX	1 BOX	3.62
	2"	95220B	10 / BOX	1 BOX	2.09
	2 1/2"	95225B	10 / BOX	4 BOXES	17.23
	3"	95230B	10 / BOX	4 BOXES	19.99
	3 1/2"	95235B	5 / BOX	4 BOXES	15.59
	4"	95240B	5 / BOX	4 BOXES	13.63



CONDUIT LOCKNUTS

Steel

- **APPLICATION:** Use to secure Rigid, IMC conduit or various threaded fittings to a steel outlet box or other metal enclosure. Indoors or outdoors.



Contact us for Canadian regulatory listings.



	SIZE	PART #	PCS / PKG	TOTAL CTN QTY	CTN WT
UPC	1/2"	26190	4 / BAG	30 BAGS	1.41
	1/2"	26191	20 / BAG	10 BAGS	2.12
	3/4"	26197	4 / BAG	25 BAGS	1.89
	3/4"	26192	20 / BAG	8 BAGS	2.83
	1"	96193	2 / BAG	25 BAGS	1.72
	1 1/4"	96194	2 / BAG	25 BAGS	2.14
	1 1/4"	26194	10 / BAG	5 BAGS	2.28
	1 1/2"	96195	2 / BAG	20 BAGS	2.24
	1 1/2"	26195	10 / BAG	5 BAGS	2.65
	2"	96196	2 / BAG	15 BAGS	2.18
	2"	26196	10 / BAG	5 BAGS	3.40
	2-1/2"	61925	1 / BAG	15 BAGS	2.05
	3"	61930	1 / BAG	10 BAGS	2.02
	4"	61940	1 / BAG	5 BAGS	2.85
BULK	1/2"	61905B	200 / BOX	10 BOXES	22.31
	3/4"	61907B	100 / BOX	10 BOXES	16.33
	1"	61910B	100 / BOX	10 BOXES	28.61
	1 1/4"	61912B	50 / BOX	10 BOXES	18.71
	1 1/2"	61915B	50 / BOX	10 BOXES	32.25
	2"	61920B	50 / BOX	4 BOXES	14.74
	2 1/2"	61925B	25 / BOX	1 BOX	1.91
	3"	61930B	25 / BOX	1 BOX	4.53
	3 1/2"	61935B	10 / BOX	4 BOXES	10.34
4"	61940B	10 / BOX	4 BOXES	11.56	

SEALING CONDUIT LOCKNUTS

Steel

- **APPLICATION:** Use to secure Rigid, IMC conduit or various threaded fittings to a steel outlet box or other metal enclosures, when moisture proof protection is desired. Indoors or outdoors.



Contact us for Canadian regulatory listings.



	SIZE	PART #	PCS / PKG	TOTAL CTN QTY	CTN WT
UPC	1/2"	96181	2 / BAG	10 BAGS	6.15
	3/4"	96182	2 / BAG	100 BAGS	10.73
	1"	96183	2 / BAG	75 BAGS	6.23
	1-1/4"	96184	2 / BAG	75 BAGS	12.32
	1-1/2"	96185	2 / BAG	50 BAGS	8.73
	2"	96186	2 / BAG	30 BAGS	7.43
BULK	1/2"	61805B	50 / BOX	10 BOXES	11.83
	3/4"	61807B	25 / BOX	10 BOXES	9.33
	1"	61810B	25 / BOX	10 BOXES	11.83
	1 1/4"	61812B	10 / BOX	10 BOXES	9.83
	1 1/2"	61815B	10 / BOX	10 BOXES	9.83
	2"	61820B	10 / BOX	10 BOXES	13.83

CONDUIT LOCKNUTS

Zinc Die Cast

- **APPLICATION:** Use to secure Rigid, IMC conduit or various threaded fittings to a steel outlet box or other metal enclosures. Indoors or outdoors.



Contact us for Canadian regulatory listings.



	SIZE	PART #	PCS / PKG	TOTAL CTN QTY	CTN WT
BULK	1/2"	01905B	200 / BOX	10 BOXES	19.31
	3/4"	01907B	100 / BOX	10 BOXES	15.83
	1"	01910B	100 / BOX	10 BOXES	24.45
	1 1/4"	01912B	50 / BOX	10 BOXES	20.45
	1 1/2"	01915B	50 / BOX	10 BOXES	25.20
	2"	01920B	50 / BOX	4 BOXES	13.60
	2 1/2"	01925B	25 / BOX	1 BOX	3.55
	3"	01930B	25 / BOX	1 BOX	5.26
	4"	01940B	10 / BOX	4 BOXES	10.63

GROUNDING LOCKNUTS

Zinc Die Cast

- **APPLICATION:** Use to secure Rigid, IMC conduit or various threaded fittings to a steel outlet box or other metal enclosures. Indoors or outdoors.



Contact us for Canadian regulatory listings.



	SIZE	PART #	PCS / PKG	TOTAL CTN QTY	CTN WT
BULK	2"	01820	25 / BOX	1 BOX	3.18

REDUCING WASHERS

Steel

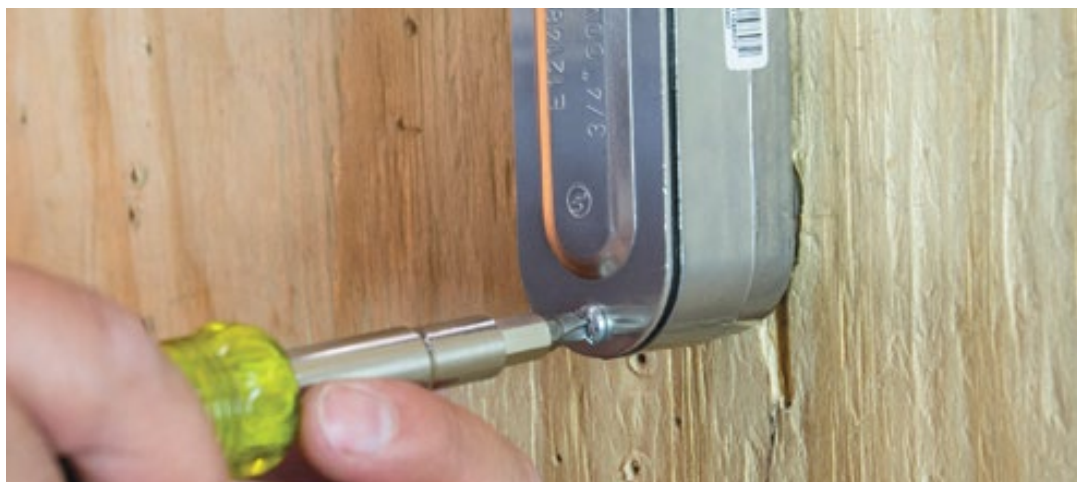
- APPLICATION:** Use to reduce the size of the knockout in a steel outlet box or other metal enclosure. Must use one inside the enclosure opening and one on the outside. Indoors or outdoors.



Contact us for Canadian regulatory listings.



	SIZE	PART #	PCS / PKG	TOTAL CTN QTY	CTN WT
UPC	3/4" x 1/2"	26820	4 / BAG	30 BAGS	1.50
	1" x 1/2"	96831	2 / BAG	40 BAGS	1.81
	1" x 3/4"	96832	2 / BAG	40 BAGS	1.56
	1 1/4" x 1/2"	96841	2 / BAG	25 BAGS	1.65
	1 1/4" x 3/4"	96842	2 / BAG	25 BAGS	1.65
	1 1/4" x 1"	96843	2 / BAG	25 BAGS	1.50
	1 1/2" x 1/2"	96851	2 / BAG	50 BAGS	9.25
	1 1/2" x 3/4"	96852	2 / BAG	50 BAGS	4.15
	1 1/2" x 1"	68510	1 / BAG	50 BAGS	3.75
	1 1/2" x 1"	26853	4 / BAG	20 BAGS	2.95
	2" x 3/4"	26862	4 / BAG	10 BAGS	5.03
	2" x 1"	26863	4 / BAG	20 BAGS	4.94
	2" x 1 1/4"	26864	4 / BAG	20 BAGS	3.92
	2" x 1 1/2"	68615	1 / BAG	50 BAGS	3.15
2-1/2" x 2"	68720	1 / BAG	10 BAGS	2.15	
BULK	3/4" x 1/2"	68205B	250 / BOX	10 BOXES	25.63
	1" x 1/2"	68305B	250 / BOX	10 BOXES	52.25
	1" x 3/4"	68307B	250 / BOX	10 BOXES	37.53
	1 1/4" x 1/2"	68405B	100 / BOX	1 BOX	3.14
	1 1/4" x 3/4"	68407B	100 / BOX	1 BOX	3.14
	1 1/4" x 1"	68410B	100 / BOX	1 BOX	2.14
	1 1/2" x 1/2"	68505B	100 / BOX	1 BOX	4.14
	1 1/2" x 3/4"	68507B	100 / BOX	1 BOX	4.14
	1 1/2" x 1 1/4"	68512B	100 / BOX	1 BOX	3.14
	2" x 1/2"	68605B	50 / BOX	1 BOX	4.14
	2" x 3/4"	68607B	50 / BOX	1 BOX	4.14
	2" x 1"	68610B	50 / BOX	1 BOX	3.64
	2" x 1 1/4"	68612B	50 / BOX	1 BOX	3.14



REDUCING BUSHINGS

Steel

- APPLICATION:** Use to reduce the entry size of a run of threaded conduit. Dry locations only.



Contact us for Canadian regulatory listings.



	SIZE	PART #	PCS / PKG	TOTAL CTN QTY	CTN WT
UPC	3/4" x 1/2"	91321	1 / BAG	25 BAGS	1.06
	1" x 1/2"	91331	1 / BAG	25 BAGS	3.08
	1" x 3/4"	91332	1 / BAG	20 BAGS	1.57
	1 1/2" x 1"	13510	1	25	6.15
	1 1/2" x 1 1/4"	13512	1	25	2.90
	2" x 3/4"	13607	1	10	6.95
	2" x 1"	13610	1	10	5.55
	2" x 1 1/4"	13612	1	10	4.70
	2" x 1 1/2"	13615	1	10	3.39
	2 1/2" x 2"	13720	1	5	2.66
BULK	3/4" x 1/2"	13205B	50 / BOX	10 BOXES	20.00
	1" x 1/2"	13305B	50 / BOX	4 BOXES	24.61
	1" x 3/4"	13307B	50 / BOX	4 BOXES	14.40
	1 1/4" x 1/2"	13405B	25 / BOX	4 BOXES	25.76
	1 1/4" x 1"	13410B	25 / BOX	4 BOXES	13.56
	1 1/2" x 1/2"	13505B	25 / BOX	4 BOXES	39.14
	1 1/2" x 3/4"	13507B	25 / BOX	4 BOXES	33.14
	2" x 1/2"	13605B	10 / BOX	1 BOX	8.65
	2 1/2" x 1 1/2"	13715B	5 / BOX	1 BOX	5.65

ONE-HOLE STRAPS

Malleable Iron

- APPLICATION:** Use to secure Rigid or IMC conduit to wood, masonry or similar surfaces where load bearing is required. Indoors or outdoors.



Contact us for Canadian regulatory listings.



	SIZE	PART #	PCS / PKG	TOTAL CTN QTY	CTN WT
BULK	1/2"	31205B	50 / BOX	10 BOXES	27.25
	3/4"	31207B	50 / BOX	10 BOXES	32.25

CLAMP BACKS

Malleable Iron

- APPLICATION:** Use to provide spacing between mounting surface and Rigid conduit. Indoors or outdoors.



Contact us for Canadian regulatory listings.



	SIZE	PART #	PCS / PKG	TOTAL CTN QTY	CTN WT
BULK	1/2"	33205B	25 / BOX	10 BOXES	29.75

CLAMP BACK AND ONE HOLE STRAP

Malleable Iron

- APPLICATION:** Use to secure Rigid or IMC conduit to mounting surface, and to provide space between conduit and mounting surface. Indoors or outdoors.



Contact us for Canadian regulatory listings.



	SIZE	PART #	PCS / PKG	TOTAL CTN QTY	CTN WT
UPC	1 1/4"	53212	1 / BAG	10 BAGS	3.66
	2"	53220	1 / BAG	10 BAGS	8.74

SPEED THREAD™

RGD ONE HOLE STRAP SPEED THREAD

Steel

- APPLICATION:** Use to join RGD conduit to flexible metallic conduit in a dry or wet location. Outdoors or Indoors.



Contact us for Canadian regulatory listings.



	SIZE	PART #	PCS / PKG	TOTAL CTN QTY	CTN WT
UPC	1/2"	21705	4 / BAG	25 BAGS	4.4
	3/4"	21707	4 / BAG	20 BAGS	3.9
CCP	1/2"	61705B	40 / CCP	4 CCP's	7.4
	3/4"	61707B	20 / CCP	4 CCP's	5.3

ONE-HOLE STRAPS

Steel

- **APPLICATION:** Use to secure Rigid or IMC conduit to wood, masonry or similar surfaces where load bearing is required. Indoors or outdoors.



Contact us for Canadian regulatory listings.



	SIZE	PART #	PCS / PKG	TOTAL CTN QTY	CTN WT
UPC	1/2"	96111	4 / BAG	15 BAGS	2.28
	3/4"	96112	4 / BAG	10 BAGS	2.54
	1"	96113	1 / BAG	15 BAGS	1.63
	1 1/4"	96114	1	10	1.12
	1 1/2"	96115	1	10	1.73
	2"	61120	1	10	2.42
	2 1/2"	61125*	1	10	4.38
	3"	61130*	1	10	5.08
CCP	1/2"	61105B	100 / CCP	4 CCP's	33.50
	3/4"	61107B	100 / CCP	4 CCP's	54.90
BULK	1"	61110B	50 / BOX	10 BOXES	43.25
	1 1/4"	61112B	50 / BOX	1 BOX	5.23
	1 1/2"	61115B	25 / BOX	10 BOXES	41.96
	3 1/2"	61135B*	25 / BOX	1 BOX	20.23
	4"	61140B*	20 / BOX	1 BOX	16.33

*Both EMT and RGD

TWO-HOLE STRAPS

Steel

- **APPLICATION:** Use to secure Rigid or IMC conduit to wood, masonry or similar surfaces where load bearing is required. Indoors or outdoors.



Contact us for Canadian regulatory listings.



	SIZE	PART #	PCS / PKG	TOTAL CTN QTY	CTN WT
UPC	1/2"	26121	10 / BAG	10 BAGS	1.96
	3/4"	26122	10 / BAG	5 BAGS	1.61
	1"	26123	4 / BAG	10 BAGS	2.48
	1 1/4"	26124	4 / BAG	10 BAGS	3.22
	1 1/2"	26125	2 / BAG	10 BAGS	2.67
	2"	26126	2 / BAG	10 BAGS	3.14
	2 1/2"	61225	1	7	1.68
	3"	61230	1	10	2.69
BULK	4"	61240	1	6	2.21
	1/2"	61205B	100 / BOX	10 BOXES	20.55
	3/4"	61207B	100 / BOX	10 BOXES	24.61
	1"	61210B	50 / BOX	10 BOXES	23.43
	1 1/4"	61212B	25 / BOX	10 BOXES	16.39
	1 1/2"	61215B	25 / BOX	10 BOXES	29.14
	2"	61220B	50 / BOX	4 BOXES	23.09
	2 1/2"	61225B	25 / BOX	1 BOX	4.07
3 1/2"	61235B	25 / BOX	1 BOX	7.73	
4"	61240B	20 / BOX	1 BOX	7.33	

RIGID / EMT COMBO CONDUIT BODIES

Aluminum

- **APPLICATION:** Use to gain access to the interior of a raceway for wire pulling, splicing (with limitations as specified by the NEC), and maintenance. Rigid indoor or outdoor. EMT indoor only.



Contact us for Canadian regulatory listings.

	SIZE	PART #	PCS / PKG	TOTAL CTN QTY	CTN WT
--	------	--------	-----------	---------------	--------

TYPE: LR

UPC	1/2"	56905	1	10	3.34
-----	------	-------	---	----	------

TYPE: LL

UPC	1/2"	56305	1	10	3.34
	3/4"	56307	1	6	2.70

TYPE: C

UPC	1/2"	56405	1	10	3.24
	3/4"	56407	1	6	2.70

TYPE: LB

UPC	1/2"	56605	1	10	3.12
	3/4"	56607	1	10	4.68

TYPE: T

UPC	1/2"	56805	1	10	3.48
	3/4"	56807	1	5	2.35



MOGUL PULLING ELBOWS - TYPE LB

Aluminum

- **APPLICATION:** Use to gain access to the interior of a raceway for wire pulling, splicing (with limitations as specified by the NEC), and maintenance. Indoors or outdoors.



Contact us for Canadian regulatory listings.

	SIZE	PART #	PCS / PKG	TOTAL CTN QTY	CTN WT
--	------	--------	-----------	---------------	--------

UPC	1 1/4"	58212	1	1	1.63
	2"	58220	1	1	4.15
BULK	2"	58220B	2 / BOX	1 BOX	8.46



THREADED CONDUIT BODIES - NO COVER OR GASKET

Aluminum

- APPLICATION:** Use to gain access to the interior of a raceway for wire pulling, splicing (with limitations as specified by the NEC), and maintenance. Indoors or outdoors when gasket and cover are installed.



Contact us for Canadian regulatory listings.

	SIZE	PART #	PCS / PKG	TOTAL CTN QTY	CTN WT
--	------	--------	-----------	---------------	--------

TYPE: LB

BULK	1 1/4"	59612B	2 / BOX	1 BOX	2.92
-------------	--------	---------------	---------	-------	------

TYPE: T

BULK	1/2"	59805B	10 / BOX	1 BOX	3.52
	3/4"	59807B	10 / BOX	1 BOX	5.12



THREADED CONDUIT BODIES - WITH STAMPED COVER

Aluminum

- APPLICATION:** Use to gain access to the interior of a raceway for wire pulling, splicing (with limitations as specified by the NEC), and maintenance. Indoors or outdoors.



Contact us for Canadian regulatory listings.

	SIZE	PART #	PCS / PKG	TOTAL CTN QTY	CTN WT
--	------	--------	-----------	---------------	--------

TYPE: LB

UPC	1/2"	58605	1	5	1.56
	3/4"	58607	1	10	4.50
	1"	58610	1	3	1.96
	1 1/4"	58612	1	2	2.74
	1 1/2"	58615	1	2	2.88
	2"	58620	1	1	2.79
	2 1/2"	58625	1	1	6.56
BULK	3"	58630B	1 / BOX	1 BOX	5.59
	3 1/2"	58635B	1 / BOX	1 BOX	11.00
	4"	58640B	1 / BOX	1 BOX	12.85



CONTINUATION OF CHART PROVIDED ON NEXT PAGE.

THREADED CONDUIT BODIES - WITH STAMPED COVER

CONTINUATION OF CHART FROM PREVIOUS PAGE.

	SIZE	PART #	PCS / PKG	TOTAL CTN QTY	CTN WT
TYPE: T					
UPC	1/2"	58805	1	5	1.73
	3/4"	58807	1	3	1.50
	1"	58810	1	2	1.50
	1-1/4"	58812	1	2	4.13
	1-1/2"	58815	1	2	3.93
	2"	58820	1	1	3.03
BULK	2-1/2"	58825B	1 / BOX	1 BOX	6.94
	3"	58830B	1 / BOX	1 BOX	7.50
	4"	58840B	1 / BOX	1 BOX	11.53



TYPE: C					
UPC	1/2"	58405	1	5	1.57
	3/4"	58407	1	3	1.45
	1"	58410	1	2	1.40
	1 1/4"	58412	1	2	2.84
	1 1/2"	58415	1	2	3.73
	2"	58420	1	1	3.23



TYPE: LR					
UPC	1/2"	58905	1	5	1.62
	3/4"	58907	1	3	1.51
	1"	58910	1	2	1.37
	1 1/4"	58912	1	2	3.53
	1 1/2"	58915	1	2	3.73
	2"	58920	1	1	3.28
BULK	2 1/2"	58925B	1 / BOX	1 BOX	3.91
	3"	58930B	1 / BOX	1 BOX	7.71
	4"	58940B	1 / BOX	1 BOX	11.24



TYPE: LL					
UPC	1/2"	58305	1	5	1.66
	3/4"	58307	1	3	1.48
	1"	58310	1	2	1.35
	1 1/2"	58315	1	2	3.73
	2"	58320	1	1	2.71
	BULK	2 1/2"	58325B	1 / BOX	1 BOX
3"		58330B	1 / BOX	1 BOX	7.31
4"		58340B	1 / BOX	1 BOX	10.71



SERVICE ENTRANCE ELL

Aluminum

- **APPLICATION:** Use to gain access to the interior of a raceway for wire pulling, inspections, and maintenance. Indoors or outdoors.



Contact us for Canadian regulatory listings.



	SIZE	PART #	PCS / PKG	TOTAL CTN QTY	CTN WT
UPC	1/2"	59505	1	10	2.16
	3/4"	59507	1	5	1.74
	1"	59510	1	3	1.46
	1 1/4"	59512	1	2	1.72
	1 1/2"	59515	1	2	1.99
	2"	59520	1	1	1.49

CONDUIT BODY COVERS

Aluminum

- **APPLICATION:** Use to cover all styles of metallic conduit bodies. Indoors or outdoors.



Contact us for Canadian regulatory listings.



	SIZE	PART #	PCS / PKG	TOTAL CTN QTY	CTN WT
BULK	1/2"	59205B	50 / BOX	1 BOX	3.16
	3/4"	59207B	50 / BOX	1 BOX	4.16
	1"	59210B	50 / BOX	1 BOX	4.82
	1 1/4" - 1 1/2"	59215B	50 / BOX	1 BOX	8.82
	2"	59220B	25 / BOX	1 BOX	7.37

CONDUIT BODY GASKETS

Neoprene

- **APPLICATION:** Use in conjunction with cover to provide a dust-tight seal to all types of metallic conduit bodies. Indoors or outdoors.



Contact us for Canadian regulatory listings.



	SIZE	PART #	PCS / PKG	TOTAL CTN QTY	CTN WT
BULK	1/2"	59105B	25 / BOX	1 BOX	0.36
	3/4"	59107B	25 / BOX	1 BOX	0.36
	1"	59110B	25 / BOX	1 BOX	0.36
	1 1/4" - 1 1/2"	59115B	20 / BOX	1 BOX	0.56
	2"	59120B	20 / BOX	1 BOX	1.32
	2 1/2" - 3"	59130B	10 / BOX	1 BOX	0.87
	3 1/2" - 4"	59140B	10 / BOX	1 BOX	1.06



- Straps72
- Water-Tight Connectors 73
- Service Entrance Caps.....73-75
- Straps, Reducers, and Supports75-76
- Brackets, Bolts and Wireholders76-77
- ELL, Clamp Connectors, Flashings and Pane Washers78

SERVICE ENTRANCE FITTINGS



ONE-HOLE GROUNDED STRAP

Steel

- **APPLICATION:** Use to secure bare solid copper wire to a working surface. Indoors or outdoors.



Contact us for Canadian regulatory listings.

	SIZE	PART #	PCS / PKG	TOTAL CTN QTY	CTN WT
UPC	3/16"	26212	50 / BAG	20 BAGS	2.58
	1/4"	26214	50 / BAG	10 BAGS	2.72

ONE-HOLE STRAPS (SE & SEU CABLE)

Steel

- **APPLICATION:** Use to secure service entrance cable to a wood, masonry or similar surface. Indoors or outdoors. For insulated wire.



Contact us for Canadian regulatory listings.

	SIZE	PART #	PCS / PKG	TOTAL CTN QTY	CTN WT
UPC	#12/2 - #14/2	26210	10 / BAG	10 BAGS	1.29
	3#8 - 3#4	92191	3 / BAG	10 BAGS	0.83
	3#8 - 3#4	26213	10 / BAG	10 BAGS	2.23
	3#3 - 3#2	46213	6 / BAG	10 BAGS	1.76
	3#1 - 3#2/0	26218	10 / BAG	10 BAGS	5.12
	3#3 - 3#4/0	26219	10 / BAG	10 BAGS	3.99
BULK	#12/2 - #14/2	62171B	100 / BOX	10 BOXES	13.83
	3#8 - 3#4	62191B	100 / BOX	10 BOXES	21.83
	3#3 - 3#2	62192B	100 / BOX	10 BOXES	23.43
	3#1 - 3#2/0	62193B	25 / BOX	10 BOXES	19.33
	3#3/0 - 3#4/0	62194B	25 / BOX	10 BOXES	22.25

TWO-HOLE STRAPS (SE & SEU CABLE)

Steel

- **APPLICATION:** Use to secure service entrance cable (SEU, SER) to a wood, masonry or similar surface. Indoors or outdoors. For insulated wire.



Contact us for Canadian regulatory listings.

	SIZE	PART #	PCS / PKG	TOTAL CTN QTY	CTN WT
UPC	3#8 - 3#4	26222	10 / BAG	10 BAGS	2.74
	3#3 - 3#2	26223	6 / BAG	10 BAGS	0.83
	3#1 - 3#2/0	26224	6 / BAG	5 BAGS	1.44
	3#3/0 - 3#4/0	26225	6 / BAG	5 BAGS	1.51
BULK	3#8 - 3#4	62291B	100 / BOX	10 BOXES	22.25
	3#3 - 3#2	62292B	100 / BOX	10 BOXES	22.25
	3#1 - 3#2/0	62293B	25 / BOX	10 BOXES	6.83
	3#3/0 - 3#4/0	62294B	25 / BOX	10 BOXES	6.83



HALEX®

BEYOND THE CURRENT

HALEX, a Scott Fetzer company | halexco.com

WATER-TIGHT CONNECTORS

Zinc Die Cast

- **APPLICATION:** Use to secure SE/SEU cable to a metal enclosure. Use to connect UF cable to a waterproof box with threaded hub. Indoors or outdoors.



Contact us for Canadian regulatory listings.

	SIZE	PART #	PCS / PKG	TOTAL CTN QTY	CTN WT
UPC	1/2" / #14-2, #12-2	90661	1 / BAG	5 BAGS	0.65
	3/4" / #12-2, #12-3	90662	1 / BAG	10 BAGS	1.65
	1" / 3#6	07210	1	10	1.92
	1" / 3#4	07310	1	10	2.37
	1 1/4" / 3#2	08212	1	10	3.93
	1 1/2" / 3#2/0	09215	1	5	3.08
	2" / 3#2/0	10220	1	5	4.74
	2" / 3#4/0	10520	1	5	4.60
BULK	1/2" / #14-2, #12-2	06605B	25 / BOX	10 BOXES	25.83
	3/4" / #12-2, #12-3	06607B	25 / BOX	10 BOXES	37.83
	1" / 3#4	07310B	10 / BOX	10 BOXES	19.91
	1 1/4" / 3#3	08112B	10 / BOX	10 BOXES	31.91
	1 1/4" / 3#2	08212B	10 / BOX	10 BOXES	40.93
	2" / 3#2/0	10220B	5 / BOX	10 BOXES	46.01
	2" / 3#4/0	10420B	5 / BOX	10 BOXES	45.51
	2" / 3#4/0	10520B	5 / BOX	10 BOXES	45.51



SERVICE ENTRANCE CAPS

Aluminum

- **APPLICATION:** Use in an overhead service entrance. Mounts on top of EMT, Rigid, or IMC conduit. Indoors or outdoors.



Contact us for Canadian regulatory listings.

	SIZE	PART #	PCS / PKG	TOTAL CTN QTY	CTN WT
UPC	1/2"	58005	1	5	1.47
	3/4"	58007	1	5	1.75
	1"	58010	1	3	1.31
	1 1/4"	58012	1	5	2.80
	1 1/2"	58015	1	3	2.58
	2"	58020	1	5	7.18
	2 1/2"	58025	1	1	4.55
	3"	58030	1	1	4.99
BULK	1 1/4"	58012B	5 / BOX	1 BOX	2.92
	2"	58020B	5 / BOX	1 BOX	7.08
	3"	58030B	1 / BOX	1 BOX	4.84
	3 1/2"	58035B	1 / BOX	1 BOX	7.20
	4"	58040B	1 / BOX	1 BOX	7.20





SERVICE ENTRANCE CAPS

Aluminum

- **APPLICATION:** Use in overhead services that utilize SEU cable. Indoors or outdoors.



Contact us for Canadian regulatory listings.

	SIZE	PART #	PCS / PKG	TOTAL CTN QTY	CTN WT
UPC	3#8 - #1	57499	1	5	1.44
	3#1/0 - 4/0	57699	1	2	1.39



OVAL SERVICE ENTRANCE CABLE HOODS

PVC

- **APPLICATION:** Use in overhead services that utilize SEU cable. Indoors or outdoors.

	SIZE	PART #	PCS / PKG	TOTAL CTN QTY	CTN WT
UPC	2/0	77602	1	2	0.97
	4/0	77604	1	4	2.44



SERVICE ENTRANCE CAPS

PVC

- **APPLICATION:** Use in overhead service entrance. Mounts on top of PVC conduit. Serves as connecting point for service entrance wires. Outdoors..



Contact us for Canadian regulatory listings.

	SIZE	PART #	PCS / PKG	TOTAL CTN QTY	CTN WT
UPC	1"	77910	1	5	1.28
	2"	77920	1	2	2.32

SLIP-FIT MAST HEADS

Aluminum

- **APPLICATION:** Use in an overhead service entrance. Mounts on top of EMT, Rigid, or IMC conduit. Indoors or outdoors.



Contact us for Canadian regulatory listings.



	SIZE	PART #	PCS / PKG	TOTAL CTN QTY	CTN WT
UPC	2 1/2"	57925	1	2	2.23

SERVICE CABLE SILL PLATES

Aluminum

- **APPLICATION:** In conjunction with sealing compound, use to protect the service entrance cable and cover the hole where it enters the dwelling. Outdoors only.

	SIZE	PART #	PCS / PKG	TOTAL CTN QTY	CTN WT
UPC	3#4	50599	1	10	2.08
	3#1/0 - 2/0	50699	1	3	2.21
	3#3/0 - 4/0	50799	1	4	3.80



CONDUIT SILL PLATES

Aluminum

- **APPLICATION:** In conjunction with sealing compound, use to protect the service entrance cable and cover the hole where it enters the dwelling. Outdoors only.

	SIZE	PART #	PCS / PKG	TOTAL CTN QTY	CTN WT
UPC	3/4"	50507	1	15	2.71
	1"	50610	1	5	2.15
	1 1/4"	50612	1	5	2.25
	1 1/2"	50615	1	3	1.35
	2"	50720	1	5	4.03



CLAMP CONNECTORS - SERVICE ENTRANCE

Zinc Die Cast

- **APPLICATION:** In a dry location, use to connect oval service cable to steel outlet box or other metal enclosure. Indoors only.



Contact us for Canadian regulatory listings.



	SIZE	PART #	PCS / PKG	TOTAL CTN QTY	CTN WT
UPC	1 1/4"	05312	1	10	2.23
	1 1/2"	05315	1	5	1.68
	2"	05320	1	5	2.13
BULK	1 1/4"	05312B	10 / BOX	10 BOXES	21.49
	1 1/2"	05315B	5 / BOX	10 BOXES	11.64
	2"	05320B	10 / BOX	4 BOXES	18.88

OFFSET BOTTOM REDUCERS

Aluminum



- **APPLICATION:** Use to connect Rigid or IMC conduit to a metal base hub. Indoors or outdoors.



Contact us for Canadian regulatory listings.

	SIZE	PART #	PCS / PKG	TOTAL CTN QTY	CTN WT
UPC	2"	50920	1	15	8.12

CONDUIT SUPPORTS (LAG SCREW)

Malleable Iron



- **APPLICATION:** Use to secure SE conduit to surface of building. Indoors or outdoors.

	SIZE	PART #	PCS / PKG	TOTAL CTN QTY	CTN WT
UPC	2"	51320	1	5	1.73
	2 1/2"	51325	1	5	4.54

CONDUIT SUPPORTS (BOLT NUT WASHER)

Malleable Iron



- **APPLICATION:** Use to secure service entrance conduit to the surface of a building. Indoors or outdoors.

	SIZE	PART #	PCS / PKG	TOTAL CTN QTY	CTN WT
UPC	2"	33520	1	6	8.02
	2 1/2"	33525	1	6	8.32

SERVICE DROP BRACKETS

Steel



- **APPLICATION:** Use to secure service entrance pipe to the house. Outdoors..

	SIZE	PART #	PCS / PKG	TOTAL CTN QTY	CTN WT
UPC	19/32"	58050	1	10	19.28

FORK BOLTS

Steel

- **APPLICATION:** Used to secure service entrance cables to a structure. Outdoors only.

	SIZE	PART #	PCS / PKG	TOTAL CTN QTY	CTN WT
UPC	12" Bolt	58060	1	4	6.63



ADJUSTABLE PORCELAIN WIREHOLDER

Porcelain

- **APPLICATION:** Use as a holding device for the incoming service entrance wires. Mounts below the overhead service entrance cap. Holds less than 100 lbs. Indoors or outdoors.

	SIZE	PART #	PCS / PKG	TOTAL CTN QTY	CTN WT
UPC	1 1/4" - 3"	60525	1	10	15.71



PORCELAIN WIREHOLDERS

Porcelain

- **APPLICATION:** Use in overhead services to secure the incoming service entrance wires. Indoors or outdoors.

	SIZE	PART #	PCS / PKG	TOTAL CTN QTY	CTN WT
--	------	--------	-----------	---------------	--------

Light Duty

UPC	1 11/16"	60416	1	10	2.94
-----	----------	-------	---	----	------

Medium Duty

UPC	2 1/4"	60322	1	10	6.31
-----	--------	-------	---	----	------

Heavy Duty

UPC	2 1/4"	60222	1	10	6.96
-----	--------	-------	---	----	------

With Pipe Hanger

UPC	2"	60645	1	1	1.00
	2 1/2"	60646	1	1	1.06



SERVICE CLEVIS

Porcelain

- **APPLICATION:** Used to dead-end service entrance drops at either end. Holds a lot of weight. 500 lbs. Indoors or outdoors.

	SIZE	PART #	PCS / PKG	TOTAL CTN QTY	CTN WT
UPC	3/16" x 3"	60625	1	1	4.01



SERVICE ENTRANCE ELL

Aluminum

- **APPLICATION:** Use to gain access to the interior of a raceway for wire pulling, inspections, and maintenance. Indoors or outdoors.



Contact us for Canadian regulatory listings.



	SIZE	PART #	PCS / PKG	TOTAL CTN QTY	CTN WT
UPC	1/2"	59505	1	10	2.16
	3/4"	59507	1	5	1.74
	1"	59510	1	3	1.46
	1 1/4"	59512	1	2	1.72
	1 1/2"	59515	1	2	1.99
	2"	59520	1	1	1.49

WEDGE CLAMP CONNECTORS

Aluminum

- **APPLICATION:** Use to connect a triplex overhead service entrance cable to a mounting device or building. Indoors or outdoors. In order of parts: 300 lbs, 400 lbs, 500 lbs.



	SIZE	PART #	PCS / PKG	TOTAL CTN QTY	CTN WT
UPC	6 - 2	51061	1	4	0.75
	4 - 1/0	51062	1	10	2.86
	2/0 - 4/0	51063	1	10	2.90

ROOF FLASHINGS

Steel

- **APPLICATION:** Use to prevent water leaks in overhead services where conduit mast penetrates the roof surface. Outdoors.



	SIZE	PART #	PCS / PKG	TOTAL CTN QTY	CTN WT
UPC	1 1/4"	60812	1	10	10.85
	2"	60820	1	5	1.22
	2 1/2"	60825	1	5	1.25

ELECTRIC PANE WASHERS

Steel

- **APPLICATION:** Used to secure a panel to a wall. Indoors only.



	SIZE	PART #	PCS / PKG	TOTAL CTN QTY	CTN WT
UPC	1 1/4" Dia.	96312	1	10	0.93



- Cable Staples.....80
- Plastic Insulating Staples.....80
- Strain Relief Cord Connector81
- Non-Metallic Strain Relief Cord Connector81
- Switch Box Supports....82
- Snap In Bushings.....83
- Nail Plates.....83
- Jack Chain.....84
- "S" Hook.....84
- "Sky Tie" Cable Clamps.....84
- Extension Springs.....84
- Duct Seal84
- Fixture Hangers.....85
- Conduit Hangers.....85
- Beam Clamps86

ACCESSORIES

CABLE STAPLES FOR SEU AND RANGE CABLE

Steel

- **APPLICATION:** Use to secure non-metallic sheathed, armored or SEU cable to wood surfaces. Indoors only.



	SIZE	PART #	PCS / PKG	TOTAL CTN QTY	CTN WT
BULK	#14 to #12-2	61010	100 / Box	1 Box	1.00
	#14 to #12-2	61050	500 / Box	1 Box	4.00
	#14 to #10-3	62510	100 / Box	1 Box	2.00

PLASTIC INSULATING STAPLES

Plastic with Steel Nails

- **APPLICATION:** Use to secure non-metallic sheathed cable or UF cable to wood surfaces. Indoors only.



Contact us for Canadian regulatory listings.

¹ NM cable #14 - #12 and UF cable #14/2 - #12/2

² NM cable #10/2 - #8/2 and UF cable #10/2 - #8/2; #14/3 - #12/3



	SIZE	PART #	PCS / PKG	TOTAL CTN QTY	CTN WT
UPC	1/2"	27209¹	50 / BAG	25 BAGS	7.66
	3/4"	27309²	50 / BAG	25 BAGS	8.40



STRAIN RELIEF CORD CONNECTOR

Zinc Die Cast

- APPLICATION:** Use to connect S, SO, ST, SJ, SJO, and SJT cord to a steel outlet box or other metal enclosure. For round cable. Indoors only.

Fits wire range: .220 - .260 ¹	Fits wire range: .500 - .625 ⁷
Fits wire range: .300 - .375 ²	Fits wire range: .580 - .625 ⁸
Fits wire range: .375 - .500 ³	Fits wire range: .625 - .750 ⁹
Fits wire range: .400 - .500 ⁴	Fits wire range: .630 - .720 ¹⁰
Fits wire range: .440 - .500 ⁵	Fits wire range: .650 - .740 ¹¹
Fits wire range: .450 - .500 ⁶	Fits wire range: .750 - .850 ¹²



Contact us for Canadian regulatory listings.

	SIZE	PART #	PCS / PKG	TOTAL CTN QTY	CTN WT
UPC	1/2"	21691 ²	2 / BAG	8 BAGS	1.87
	1/2"	21692 ⁴	2 / BAG	8 BAGS	1.53
	3/4"	21694 ⁸	2 / BAG	8 BAGS	2.45
	1"	16932 ⁹	1	10	2.27
	1"	16933 ¹⁰	1 / BAG	10 BAGS	2.40
	1"	16934 ¹²	1 / BAG	10 BAGS	2.40
BULK	1/2"	16911B ¹	25 / BOX	10 BOXES	22.83
	1/2"	16912B ²	25 / BOX	10 BOXES	22.83
	1/2"	16913B ²	25 / BOX	10 BOXES	26.08
	3/4"	16921B ⁵	25 / BOX	10 BOXES	33.75
	3/4"	16923B ¹¹	25 / BOX	10 BOXES	33.75
	1"	16933B ¹⁰	10 / BOX	10 BOXES	20.01
	1"	16934B ¹²	10 / BOX	10 BOXES	36.25



NON-METALLIC STRAIN RELIEF CORD CONNECTOR

PVC

- APPLICATION:** Used to connect cord to a steel outlet box or other metal enclosure. For round cable. Indoor and outdoor. Liquid tight.

¹ Fits wire range: .235 - .400
² Fits wire range: .410 - .740



Contact us for Canadian regulatory listings.

	SIZE	PART #	PCS / PKG	TOTAL CTN QTY	CTN WT
UPC	1/2"	27693 ¹	1	20	0.96
	3/4"	27697 ²	1	10	0.76
BULK	1/2"	76913B ¹	25 / BOX	1 BOX	2.06
	3/4"	76923B ²	10 / BOX	1 BOX	1.68



KNOCKOUT SEALS

Steel

- **APPLICATION:** Use to cover exposed knockout holes in steel outlet boxes and other metal enclosures. Indoors only.



	SIZE	PART #	PCS / PKG	TOTAL CTN QTY	CTN WT
UPC	1/2"	26071	4 / BAG	30 BAGS	2.01
	3/4"	26072	4 / BAG	20 BAGS	1.42
	1"	96073	2 / BAG	15 BAGS	0.89
	1 1/4"	60712	1	25	0.97
	1 1/2"	60715	1	25	1.24
	2"	60720	1	15	1.05
CCP	1/2"	60704B	150 / CCP	4 CCP's	2.28
	3/4"	60797B	100 / CCP	4 CCP's	2.30
BULK	1/2"	60705B	250 / BOX	4 BOXES	3.16
	3/4"	60707B	250 / BOX	4 BOXES	5.66
	1"	60710B	50 / BOX	10 BOXES	1.84

3 PIECE KNOCKOUT SEALS

Steel

- **APPLICATION:** Use to cover exposed knockout holes in steel outlet boxes and other metal enclosures. Indoors only.



	SIZE	PART #	PCS / PKG	TOTAL CTN QTY	CTN WT
UPC	1/2"	20605	4 / BAG	30 BAGS	3.0
	3/4"	20607	4 / BAG	20 BAGS	2.4
	1"	20610	2 / BAG	15 BAGS	1.2
	1 1/4"	20612	1 / BAG	25 BAGS	1.6
	1 1/2"	20615	1	25	2.2
	2"	20620	1	15	2.5
CCP	1/2"	60605B	75 / CCP	4 CCP's	7.4
	3/4"	60607B	50 / CCP	4 CCP's	6.6
	1/2"	60610B	50 / CCP	4 CCP's	9.0
	1 1/4"	60612B	25 / CCP	4 CCP's	1.4
BULK	1 1/4"	60615B	1	20	1.8
	3/4"	60707B	1	20	1.4

SWITCH BOX SUPPORTS

Steel

- **APPLICATION:** Use to support attachment of an outlet box in drywall in the absence of a structure member. Indoors only.



	SIZE	PART #	PCS / PKG	TOTAL CTN QTY	CTN WT
UPC		26279	1 PAIR	25	1.45

SNAP IN BUSHINGS

Plastic

- **APPLICATION:** Use to protect non-metallic cable from damage when running cable through metal studs. Indoors only.

	SIZE	PART #	PCS / PKG	TOTAL CTN QTY	CTN WT
UPC	1/2"	27251	10 / BAG	10 BAGS	0.56
	3/4"	27252	10 / BAG	10 BAGS	0.78
	1"	27253	10 / BAG	10 BAGS	0.58
	2 1/2"	72525	1	10	0.55
BULK	1/2"	72505B	100 / BOX	1 BOX	1.34
	3/4"	72507B	100 / BOX	1 BOX	1.59
	1"	72510B	100 / BOX	1 BOX	1.49
	1 1/2"	72515B	100 / BOX	1 BOX	0.64
	2"	72520B	25 / BOX	1 BOX	1.23



UNIVERSAL SNAP IN BUSHINGS

Polypropylene

- **APPLICATION:** Use to protect non-metallic cable from damage when running cable through metal studs. Indoors only.



Contact us for Canadian regulatory listings.

	SIZE	PART #	PCS / PKG	TOTAL CTN QTY	CTN WT
UPC	Universal	27259	25 / BAG	6 BAGS	3.52
BULK	Universal	72599B	25 / BOX	10 BOXES	1.67



NAIL PLATES

Steel

- **APPLICATION:** Use to protect internal wire runs from nail punctures. Indoors only. Plate thickness 0.06"



Contact us for Canadian regulatory listings.

	SIZE	PART #	PCS / PKG	TOTAL CTN QTY	CTN WT
UPC	1 1/2" x 2 1/2"	62800	1	200	10.20
	1 1/2" x 5"	62850	1	100	15.20
CCP	1 1/2" x 2 1/2"	62897	200 / CCP	4 CCP's	14.13
	1 1/2" x 2 1/2"	62899	50 / CCP	4 CCP's	4.32
BULK	1 1/2" x 5"	62851B	100 / BOX	1 BOX	12.28





JACK CHAIN

Steel

- **APPLICATION:** Supports up to 29lbs. Sold by the foot.

	SIZE	PART #	PCS / PKG	TOTAL CTN QTY	CTN WT
BULK	12GA	60010	100ft / BOX	1 Spool	9.20
	10GA	60020	100ft / BOX	1 Spool	15.05



“S” HOOK

Steel

- **APPLICATION:** Use to suspend light fixtures. Indoors only.

	SIZE	PART #	PCS / PKG	TOTAL CTN QTY	CTN WT
BULK	12GA	60199	100 / BOX	1 BOX	0.94



“SKY TIE” CABLE CLAMPS

Steel

- **APPLICATION:** Supports and anchors bus-drop cable at a 90 degree angle.

	SIZE	PART #	PCS / PKG	TOTAL CTN QTY	CTN WT
BULK	1 1/8" - 1 11/16"	25716B	5 / BOX	1 BOX	8.15
	1/2" - 3/4"	66207B	10 / BOX	1 BOX	4.45
	3/4" - 1 1/8"	66211B	10 / BOX	1 BOX	8.20



EXTENSION SPRINGS

Steel

- **APPLICATION:** Use to suspend “Sky-Tie cable to clamp. Indoors only.

	SIZE	PART #	PCS / PKG	TOTAL CTN QTY	CTN WT
BULK	10 - 60 LBS	66377B	10 / BOX	1 BOX	2.20
	10 - 70 LBS	66388B	10 / BOX	1 BOX	2.70
	25 - 200 LBS	66399B	5 / BOX	1 BOX	5.23



DUCT SEAL

- **APPLICATION:** Use to seal around junction boxes, flashings, and service entrance locations. Indoors or outdoors.

	SIZE	PART #	PCS / PKG	TOTAL CTN QTY	CTN WT
BULK	1 LB SLUG	79910B	1 SLUG	1 SLUG	1.00

FIXTURE HANGERS

Steel

- **APPLICATION:** Use to secure and suspend light fixture. Indoors or outdoors.



	SIZE	PART #	PCS / PKG	TOTAL CTN QTY	CTN WT
BULK	4"	69699B	25 / BOX	1 BOX	16.70

CONDUIT HANGERS

Steel

- **APPLICATION:** Use to secure and suspend conduit from overhead supports. Indoors or outdoors.



Contact us for Canadian regulatory listings.

	TRADE SIZE	PART #	PCS / PKG	TOTAL CTN QTY	CTN WT
UPC	0	26780*	5 / BAG	10 / BAGS	3.27
	1	26781*	5 / BAG	10 / BAGS	3.62
	2	67820	1	20	2.21
	2 1/2	67825	1	15	1.85
	3	67830	1	15	1.97
	4	67840	1	10	1.49
	5	67850	1	20	4.21
	6	67860	1	10	3.71
CCP	0	67801B*	45 / CCP	4 CCP's	4.24
	2	67822B*	25 / CCP	4 CCP's	3.52
BULK	0	67800B	100 / BOX	1 BOX	7.39
	1	67810B	100 / BOX	1 BOX	8.09
	2	67820B	100 / BOX	1 BOX	10.32
	2	67821B	100 / BOX	1 BOX	10.30
	3	67830B	100 / BOX	1 BOX	11.56
	4	67840B	100 / BOX	1 BOX	13.99
	5	67850B	50 / BOX	1 BOX	10.37
	6	67860B	50 / BOX	1 BOX	18.11
	7	67870B	50 / BOX	1 BOX	20.41
	8	67880B	25 / BOX	1 BOX	10.99
9	67890B	10 / BOX	1 BOX	6.04	



SPEED THREAD ///



*Speedthread Conduit Hanger.





BEAM CLAMPS

Steel

- **APPLICATION:** Use to secure conduit to a metal beam. Indoors or outdoors.



Contact us for Canadian regulatory listings.

	Opening/ Thread Size	PART #	PCS / PKG	TOTAL CTN QTY	CTN WT
UPC	.59" / 1/4-20	96560	1 / BAG	15 BAGS	2.00
BULK	.59" / 1/4-20	65600B	25 / BOX	1 BOX	4.09



BEAM CLAMPS

Malleable Iron

- **APPLICATION:** Use to secure conduit to a metal beam. Indoors or outdoors.



Contact us for Canadian regulatory listings.

	Opening/ Thread Size	PART #	PCS / PKG	TOTAL CTN QTY	CTN WT
	.79" / 1/4-20	35600	25 / BOX	1 BOX	4.68
BULK	.79" / 1/4-20	35600B	25 / BOX	1 BOX	6.49
	1.00" / 3/8-16	35610B	10 / BOX	1 BOX	7.23





- *Ground Clamps*88-90
- *Ground Screws*.....90
- *Ground Wires*90
- *Ground Clips*.....91
- *Split Bolt Connectors*...92
- *Solderless Terminal Lugs* 92

GROUNDING AND BONDING FITTINGS



GROUND CLAMPS (BARE WIRE)

Bronze

- **APPLICATION:** Use to secure bare copper ground wire to 3/8" rebar through 1" pipe. Indoors or outdoors.



Contact us for Canadian regulatory listings.

	SIZE	PART #	PCS / PKG	TOTAL CTN QTY	CTN WT
UPC	3/8" - 1"	36910	1 / BAG	25 BAGS	5.17
BULK	3/8" - 1"	36910B	100 / BOX	1 BOX	27.37



GROUND CLAMPS (BARE WIRE)

Zinc

- **APPLICATION:** Use to secure the bare copper ground wire to a 1/2" through 1" pipe. Indoors or outdoors.



Contact us for Canadian regulatory listings.

	SIZE	PART #	PCS / PKG	TOTAL CTN QTY	CTN WT
UPC	1/2" - 1"	16010	1 / BAG	25 BAGS	4.85
BULK	1/2" - 1"	16010B	25 / BOX	10 BOXES	49.43



GROUND CLAMPS (BARE WIRE)

Bronze

- **APPLICATION:** Use to secure the bare copper ground wire to a 1/2" through 1" pipe. Indoors or outdoors.



Contact us for Canadian regulatory listings.

	SIZE	PART #	PCS / PKG	TOTAL CTN QTY	CTN WT
UPC	1/2" - 1"	36010	1 / BAG	25 BAGS	4.73
BULK	1/2" - 1"	36010B	25 / BOX	10 BOXES	47.13



GROUND CLAMPS (BARE WIRE) - FOR DIRECT BURIAL

Bronze

- **APPLICATION:** Use to secure the bare copper ground wire to a 1/2" through 1" pipe. Indoors or outdoors. Embedded in concrete.



Contact us for Canadian regulatory listings.

	SIZE	PART #	PCS / PKG	TOTAL CTN QTY	CTN WT
UPC	1/2" - 1"	36019	1 / BAG	15 BAGS	2.97

GROUND CLAMPS (BARE WIRE)

Bronze

- **APPLICATION:** Use to secure the bare copper ground wire to a 1 1/4" through 2" pipe. Indoors or outdoors.



Contact us for Canadian regulatory listings.



	SIZE	PART #	PCS / PKG	TOTAL CTN QTY	CTN WT
UPC	1 1/4" - 2"	36020	1	10	4.21
BULK	1 1/4" - 2"	36020B	25 / BOX	1 BOX	10.57

GROUND CLAMPS (BARE WIRE)

Bronze

- **APPLICATION:** Use to secure the bare copper ground wire to a 1 1/4" through 2" pipe. Indoors or outdoors.



Contact us for Canadian regulatory listings.



	SIZE	PART #	PCS / PKG	TOTAL CTN QTY	CTN WT
UPC	1 1/4" - 2"	36029	1	25	10.78

GROUND CLAMPS (ARMORED CABLE)

Bronze

- **APPLICATION:** Use to secure the grounding wire to a 1/2" through 1" pipe. Indoors or outdoors.



Contact us for Canadian regulatory listings.



	SIZE	PART #	PCS / PKG	TOTAL CTN QTY	CTN WT
UPC	1/2" - 1"	36110	1 / BAG	15 BAGS	3.69

GROUND CLAMPS (ARMORED CABLE)

Zinc

- **APPLICATION:** Use to secure the grounding wire to a 1/2" through 1" pipe. Indoors or outdoors.



Contact us for Canadian regulatory listings.



	SIZE	PART #	PCS / PKG	TOTAL CTN QTY	CTN WT
UPC	1/2" - 1"	16110	1 / BAG	15 BAGS	3.25

GROUND ROD CLAMPS

Bronze

- **APPLICATION:** Use to connect bare copper ground wire to a drive ground rod. Indoors or outdoors.



Contact us for Canadian regulatory listings.



	SIZE	PART #	PCS / PKG	TOTAL CTN QTY	CTN WT
UPC	1/2"	93591	1 / BAG	30 BAGS	2.95
	5/8"	93592	1 / BAG	30 BAGS	3.20
	3/4"	35907	1 / BAG	10 BAGS	1.47
BULK	1/2"	35905B	50 / BOX	10 BOXES	66.83
	5/8"	35906B	50 / BOX	10 BOXES	50.97

GROUND SCREWS

Steel

- **APPLICATION:** Use to ground a wiring device to a steel outlet box.



	SIZE	PART #	PCS / PKG	TOTAL CTN QTY	CTN WT
UPC	#10-32	26329	10 / BAG	10 BAGS	0.76
BULK	#10-32	63299	100 / BOX	10 BOXES	5.39

GROUND WIRES

Copper

- **APPLICATION:** Use to ground the branch wire to the wall of a steel outlet box.



	SIZE	PART #	PCS / PKG	TOTAL CTN QTY	CTN WT
UPC	#12 AWG STR	46319	2 / BAG	10 BAGS	0.82
BULK	#14 AWG SOL	63188	100 / BOX	1 BOX	1.3

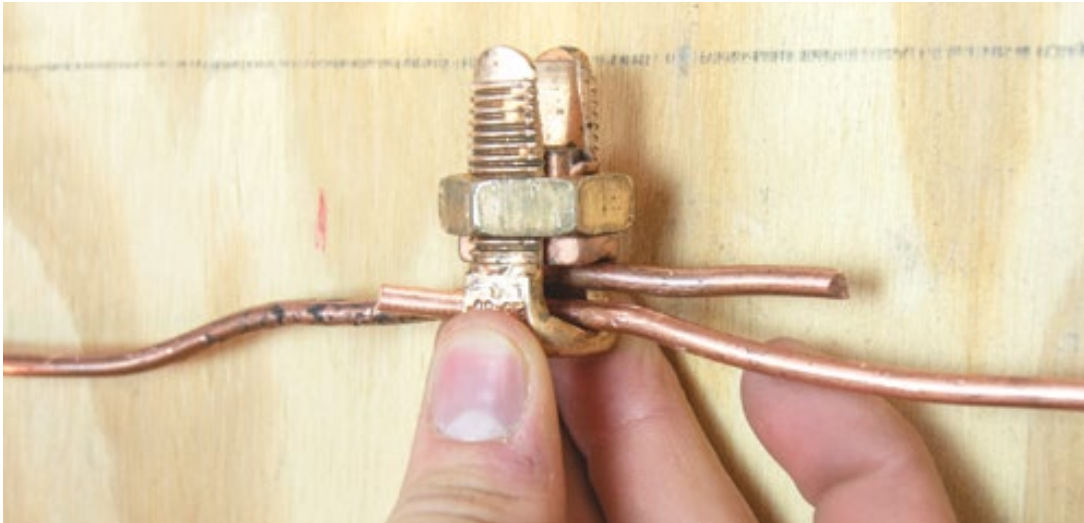
GROUND CLIPS

Steel

- **APPLICATION:** Use to connect the grounding wire to the sidewall of a steel outlet box.



	SIZE	PART #	PCS / PKG	TOTAL CTN QTY	CTN WT
UPC	#14 - #12	26309	10 / BAG	10 BAGS	0.53
BULK	#14 - #12	63099	100 / BOX	10 BOXES	4.23



SPLIT BOLT CONNECTORS

Copper

- APPLICATION:** Used to join two copper conductors together when tapping, splicing or terminating. Indoors or outdoors.



Contact us for Canadian regulatory listings.



	SIZE	PART #	PCS / PKG	TOTAL CTN QTY	CTN WT
BULK	16 STR - 8 STR	32408B	100 / BOX	1 BOX	3.11
	6 SOL - 2 STR	32402B	100 / BOX	1 BOX	14.14
	2 SOL - 2/0 STR	32320B	25 / BOX	1 BOX	8.11
	2 SOL - 3/0	32330B	25 / BOX	1 BOX	10.16

SPLIT BOLT CONNECTORS (WITH SPACER BAR)

Tin Plated Copper

- APPLICATION:** Used to join two copper conductors together when tapping, splicing or terminating. Indoors or outdoors. Use oxide-inhibiting compound when connecting aluminum or ACSR or aluminum to copper conductors.



Contact us for Canadian regulatory listings.



	SIZE	PART #	PCS / PKG	TOTAL CTN QTY	CTN WT
BULK	10 STR - 6 STR	32004B	25 / BOX	1 BOX	3.11

SOLDERLESS TERMINAL LUGS

Copper

- APPLICATION:** Use to connect a wire or wires to a metal enclosure. Indoors or outdoors.



Contact us for Canadian regulatory listings.



	SIZE	PART #	PCS / PKG	TOTAL CTN QTY	CTN WT
BULK	#8 - #2	32602B	200 / BOX	1 BOX	10.14
	#6 - 1/0	32510B	100 / BOX	1 BOX	11.16
	#2 - 4/0	32540B	10 / BOX	1 BOX	2.51



- *Non-Fused AC Disconnects.....94*
- *AC Whips.....94*

AC DISCONNECTS



NON-FUSED AC DISCONNECTS

Steel

- APPLICATION:** Used to stop the power going to an air conditioning unit to allow for safe working conditions. Outdoors only.
² 14400 WATT



Contact us for Canadian regulatory listings.

	SIZE	PART #	PCS / PKG	TOTAL CTN QTY	CTN WT
UPC	60 AMP	HNF60R ²	1	1	2.64

AC WHIPS

PVC

- APPLICATION:** Use to connect AC disconnects to AC compressors. Indoors or outdoors.



Contact us for Canadian regulatory listings.



	SIZE	PART #	PCS / PKG	TOTAL CTN QTY	CTN WT
UPC	1/2" x 6'	69126	1 / BAG	6 BAGS	12.0
	3/4" x 6'	69346	1 / BAG	6 BAGS	16.4





CATALOG INDEX

1.800.749.3261
halexco.com

INDEX

ITEM NO.	PAGE NO.	ITEM NO.	PAGE NO.	ITEM NO.	PAGE NO.	ITEM NO.	PAGE NO.	ITEM NO.	PAGE NO.	ITEM NO.	PAGE NO.
01820	62	04015B	55	05320	37, 75	12140B	6, 48	16210B	42	21705	65
01905B	62	04020	55	05320B	37, 75	12201B	8	16212B	42	21707	65
01907B	62	04020B	55	05711B	31, 38	12210B	8	16215B	42	22105	4
01910B	62	04025B	55	05803B	31	12211B	8	16220B	42	22107	4
01912B	62	04030B	55	06305B	42	12212B	8	16310	58	22205B	13
01915B	62	04203B	30	06307B	42	12215B	8	16312	58	22210	10
01920B	62	04205B	30	06605B	39, 73	12220B	8	16315	58	22212	10
01925B	62	04207B	30	06607B	39, 73	12225B	8, 49	16320	58	22221	12
01930B	62	04210	30	06703B	29, 39	12230B	8, 49	16325B	58	22222	12
01940B	62	04210B	30	06805B	43	12240B	8, 49	16335B	58	23210	6
02005	11	04212	30	07005B	55	12301B	6	16340B	58	23212	6
02007	10	04212B	30	07007B	55	12310	6	16405B	58	23220	8
02007B	10	04215	30	07010B	55	12312	6	16407B	58	23222	8
02101B	10	04215B	30	07012	55	12315	6	16903B	43	25703	33
02110B	10	04220	30	07012B	55	12320	6	16905B	43	25716B	84
02111B	10	04220B	30	07015	55	12401B	8	16907B	43	25803	32
02112B	10	04225B	30	07015B	55	12410	8	16910	43	26071	82
02115B	10	04230B	30	07020	55	12412	8	16910B	43	26072	82
02120B	10	04230B	30	07020B	55	12415	8	16911B	81	26121	66
02125B	10, 49	04235B	30	07025B	55	12420	8	16912B	81	26122	66
02130B	10, 49	04240B	30	07030	55	13205B	64	16913B	81	26123	66
02135B	10, 49	04403B	28	07030B	55	13305B	64	16914B	43	26124	66
02140B	10, 49	04405B	28	07040B	55	13307B	64	16915B	43	26125	66
02210B	12	04407B	28	07210	73	13405B	64	16920B	43	26126	66
02211B	12	04410	28	07310	73	13410B	64	16921B	81	26141	24
02211B	12	04410B	28	07310B	73	13505B	64	16923B	81	26142	24
02212B	12	04412	28	08112B	73	13507B	64	16932	81	26151	22
02215B	12	04412B	28	08212	73	13510	64	16933	81	26152	22
02220B	12	04415	28	08212B	73	13512	64	16933B	81	26153	22
02225B	12, 50	04415B	28	09215	73	13605B	64	16934	81	26154	22
02230B	12, 50	04420	28	10220	73	13607	64	16934B	81	26155	22
02240B	12, 50	04420B	28	10220B	73	13610	64	19005	53	26156	22
02301B	10	04505B	29	10420B	73	13612	64	19007	53	26161	23
02310	10	04507B	29	10520	73	13615	64	19205B	53	26162	23
02312	10	04510	29	10520B	73	13715B	64	19207B	53	26163	23
02315	10	04512	29	11001B	33	13720	64	20420	30	26164	23
02320	10	04515	29	11005B	33	14205	53	20421	30	26165	23
02401B	12	04520	29	11007B	33	14207	53	20422	30	26166	23
02410	12	04805B	29	11010	33	14305	18	20440	28	26190	61
02412	12	04807B	29	11010B	33	14307	18	20442	28	26191	61
02415	12	04905B	15, 32	11012	33	14405	18	20491	15, 32	26192	61
02420	12	04907B	15, 32	11012B	33	14407	18	20492	15, 32	26194	61
02705B	19	04910	15, 32	11015	33	14605	19	20511	37	26195	61
02707B	19	05103B	37	11015B	33	14607	19	20512	37	26196	61
02805B	19	05107B	37	11020B	33	15301B	17, 40	20515	38	26197	61
02807B	19	05110B	37	11025B	33	15303B	17, 40	20517	38	26210	40, 72
02905B	19	05112B	37	11030B	33	15304B	16, 51	20518	38	26211	34
02907B	19	05115	37	11040B	33	15305B	16, 32	20570	31, 38	26212	72
02910	19	05115B	37	12101B	6	15306B	16, 51	20581	31	26213	72
03705B	17	05120	37	12110B	6	15307B	16, 32	20670	29, 39	26214	72
03707B	17	05120B	37	12111B	6	15803B	31, 39	20701	55	26218	72
03905	17	05205B	58	12112B	6	16010	88	21305	21	26219	72
03907	17	05220B	58	12115B	6	16010B	88	21307	21	26222	72
04005B	55	05240B	58	12120B	6	16110	89	21580	31, 39	26223	72
04007B	55	05312	37, 75	12125B	6, 48	16203B	42	21642	58	26224	72
04010	55	05312B	37, 75	12130	6, 48	16205B	42	21691	81	26225	72
04010B	55	05315	37, 75	12130B	6, 48	16207B	42	21692	81	26230	11
04015	55	05315B	37, 75	12135B	6, 48	16210	42	21694	81	26232	11

INDEX

ITEM NO.	PAGE NO.	ITEM NO.	PAGE NO.	ITEM NO.	PAGE NO.	ITEM NO.	PAGE NO.	ITEM NO.	PAGE NO.	ITEM NO.	PAGE NO.
26241	13	27621	45	50615	75	58307	69	59507	70, 78	61505B	22
26242	13	27622	45	50699	75	58310	69	59510	70, 78	61507B	22
26250	14	27690	46	50720	75	58315	69	59512	70, 78	61511B	22
26252	14	27691	46	50799	75	58320	69	59515	70, 78	61512B	22
26261	15	27692	46	50920	76	58325B	69	59520	70, 78	61515B	22
26262	15	27693	81	51061	78	58330B	69	596126	68	61520B	22
26270	7	27697	81	51062	78	58340B	69	59805B	68	61605B	23
26271	7	28211	10	51063	78	58405	69	59807B	68	61610B	23
26272	7	28212	10	51320	76	58407	69	60010	84	61612B	23
26279	82	28231	11	51325	76	58410	69	60020	84	61615B	23
26280	9	28232	11	53212	65	58412	69	60199	84	61620B	23
26281	9	28271	7	53220	65	58415	69	60222	77	61705B	65
26282	9	28272	7	54012	52	58420	69	60322	77	61707B	65
26309	91	28440	28	54020	52	58525B	26	60416	77	61805B	62
26329	90	28441	28	54112	54	58605	68	60525	77	61807B	62
26351	50	28442	28	54120	54	58607	68	60625	77	61810B	62
26352	50	29101	33	56305	25, 67	58610	68	60645	77	61812B	62
26510	38	29102	33	56307	25, 67	58612	68	60646	77	61815B	62
26512	38	29251	14	56405	25, 67	58615	68	60704B	82	61820B	62
26514	38	29252	14	56407	25, 67	58620	68	60705B	82	61905B	61
26515	38	29521	60	56605	25, 67	58625	68	60707B	82	61907B	61
26571	32	29522	60	56607	25, 67	58630B	68	60710B	82	61910B	61
26780	85	29523	60	56805	25, 67	58635B	68	60712	82	61912B	61
26781	85	29525	60	56807	25, 67	58640B	68	60715	82	61915B	61
26820	63	31205B	64	56905	26, 67	58705	26	60720	82	61920B	61
26853	63	31207B	64	57305B	25	58707	26	60797B	82	61925	61
26862	63	32004B	92	57307B	25	58725B	26	60812	78	61925B	61
26863	63	32320B	92	57320B	25	58805	69	60820	78	61930	61
26864	63	32330B	92	57499	74	58807	69	60825	78	61930B	61
27209	80	32402B	92	57605B	25	58810	69	61010	80	61935B	61
27251	83	32408B	92	57607B	25	58812	69	61050	80	61940	61
27252	83	32510B	92	57610B	25	58815	69	61105B	65	61940B	61
27253	83	32540B	92	57612B	25	58820	69	61107B	65	62105B	4
27259	83	32602B	92	57620B	25	58825B	69	61110B	65	62107B	4
27309	80	33205B	64	57699	74	58830B	69	61112B	65	62171B	40, 72
27500	36	33520	76	57707B	26	58840B	69	61115B	65	62180B	34
27501	16	33525	76	57712B	26	58905	69	61120	65	62191B	72
27502	16	35600	86	57720B	26	58907	69	61125	22, 65	62192B	72
27503	16	35600B	86	57925	75	58910	69	61130	22, 65	62193B	72
27504	16	35610B	86	58005	73	58912	69	61135B	22, 65	62194B	72
27505	16	35905B	90	58007	73	58915	69	61140B	22, 65	62205B	4
27506	16	35906B	90	58010	73	58920	69	61205B	66	62207B	4
27507	36	35907	90	58012	73	58925B	69	61207B	66	62291B	72
27510	36	36010	88	58012B	73	58930B	69	61210B	66	62292B	72
27511	36	36010B	88	58015	73	58940B	69	61212B	66	62293B	72
27512	36	36019	88	58020	73	59105B	70	61215B	66	62294B	72
27514	36	36020	89	58020B	73	59107B	70	61220B	66	62305B	11
27515	36	36020B	89	58025	73	59110B	70	61225	23, 66	62307B	11
27516	36	36029	89	58030	73	59115B	70	61225B	23, 66	62310	11
27520	59	36110	89	58030B	73	59120B	70	61230	23, 66	62310B	11
27521	59	36910	88	58035B	73	59130B	70	61235B	23, 66	62311B	11
27522	59	36910B	88	58040B	73	59140B	70	61240	23, 66	62312	11
27525	59	46213	72	58050	76	59205B	70	61240B	23, 66	62312B	11
27526	59	46319	90	58060	77	59207B	70	61401B	24	62315	11
27527	59	50507	75	58212	67	59210B	70	61402B	24	62315B	11
27528	59	50599	75	58220	67	59215B	70	61305B	21	62320	11
27529	59	50610	75	58220B	67	59220B	70	61307B	21	62320B	11
27620	45	50612	75	58305	69	59505	70, 78	61410B	24	62325B	11, 50

INDEX

ITEM NO.	PAGE NO.	ITEM NO.	PAGE NO.	ITEM NO.	PAGE NO.	ITEM NO.	PAGE NO.	ITEM NO.	PAGE NO.	ITEM NO.	PAGE NO.
62401B	13	62725B	7, 48	64012	52	64347B	57	64512	20	67821B	85
62402B	13	62735B	7, 48	64015	52	64348B	57	64515	20	67822B	85
62410	13	62740B	7, 48	64020	52	64350B	57	64520	20	67825	85
62410B	13	62800	83	64025	52	64351B	56	64525	20	67830	85
62411B	13	62805B	9	64030	52	64352B	56	64530	20	67830B	85
62412	13	62807B	9	64035	52	64353	56	64535	20	67840	85
62412B	13	62809B	9	64040	52	64354	56	64540	20	67840B	85
62415	13	62810	9	64105	54	64355B	57	64607B	57	67850	85
62415B	13	62810B	9	64105B	54	64356	56	64608B	57	67850B	85
62420	13	62811B	9	64107	54	64357B	57	64615	56	67860	85
62420B	13	62812	9	64107B	54	64358B	57	64617B	57	67860B	85
62425B	13, 51	62812B	9	64110	54	64360B	57	64618B	57	67870	85
62430B	13, 51	62815	9	64110B	54	64361	56	64619B	57	67870B	85
62440B	13, 51	62815B	9	64112	54	64362	56	64620B	57	67880B	85
62501B	14	62820	9	64112B	54	64363	56	64676	56	67890B	85
62502B	14	62820B	9	64115	54	64364	56	65103B	38	68205B	63
62503B	14	62825	9, 49	64115B	54	64365	56	65110B	38	68305B	63
62505B	14	62825B	9, 49	64120	54	64366	56	65112B	38	68307B	63
62507B	14	62830	9, 49	64120B	54	64367B	57	65507B	51	68405B	63
62510	80	62830B	9, 49	64125	54	64368B	57	65600B	86	68407B	63
62510B	14	62835B	9, 49	64130	54	64369B	57	65705B	32	68410B	63
62511	14	62850	83	64140	54	64380B	57	65805B	32	68505B	63
62512	14	62851B	83	64205	54	64381B	56	66203B	44	68507B	63
62512B	14	62897	83	64207	54	64382B	56	66205	44	68510	63
62515	14	62899	83	64210	54	64383B	57	66205B	44	68512B	63
62515B	14	63099	91	64212	54	64384B	57	66206	44	68605B	63
62520	14	63188	90	64215	54	64385B	57	66206B	44	68607B	63
62520B	14	63299	90	64220	54	64386	56	66207B	84	68610B	63
62525B	14	63505B	50	64230	54	64387B	57	66210B	44	68612B	63
62530B	14	63507B	50	64240	54	64388B	57	66210	44	68615	63
62540B	14	63510	50	64300B	57	64390B	57	66211B	84	68720	63
62601B	15	63510B	50	64301B	56	64391B	56	66212B	44	69126	46, 94
62602B	15	63512	50	64302B	56	64392B	56	66215B	44	69346	46, 94
62603B	15	63512B	50	64303B	57	64393B	57	66220B	44	69699B	85
62610	15	63515	50	64305	56	64394B	57	66377B	84	72505B	83
62610B	15	63515B	50	64306B	57	64395B	57	66388B	84	72507B	83
62612	15	63520	50	64307	56	64396B	57	66399B	84	72510B	83
62612B	15	63520B	50	64310	56	64398B	57	66503B	44	72515B	83
62615	15	63525	50	64311	56	64399B	57	66505B	44	72520B	83
62615B	15	63530	50	64312	56	64405	20	66507B	44	72525	83
62620	15	63605B	51	64313	56	64405B	20	66510B	44	72599B	83
62620B	15	63607B	51	64314	56	64407	20	66512B	44	74505B	46
62625B	15	63610	51	64315	56	64407B	20	66515B	44	74507B	46
62630	15	63610B	51	64320	56	64410	20	66520B	44	75005B	16
62630B	15	63612	51	64325	56	64410B	20	66905	45	75007B	16
62640B	15	63612B	51	64327	56	64412	20	66905B	45	75010B	16
62705B	7	63615	51	64331	56	64412B	20	66907	45	75012B	16
62707B	7	63615B	51	64332	56	64415	20	66907B	45	75015B	16
62710	7	63620	51	64333	56	64415B	20	66910	45	75020B	16
62710B	7	63620B	51	64334	56	64420	20	66910B	45	75102B	36
62711B	7	63625	51	64335	56	64420B	20	66912B	45	75105B	36
62712	7	63630	51	64336	56	64425	20	66915B	45	75111B	36
62712B	7	64001B	52	64340B	57	64430	20	66920B	45	75205B	59
62715	7	64005	52	64341	56	64435	20	67800B	85	75207B	59
62715B	7	64005B	52	64342	56	64440	20	67801B	85	75210B	59
62720	7	64007	52	64343B	57	64505	20	67810B	85	75212B	59
62720B	7	64007B	52	64345B	57	64507	20	67820	85	75215B	59
62725	7, 48	64010	52	64346B	57	64510	20	67820B	85	75220B	59

INDEX

ITEM NO.	PAGE NO.	ITEM NO.	PAGE NO.	ITEM NO.	PAGE NO.	ITEM NO.	PAGE NO.	ITEM NO.	PAGE NO.	ITEM NO.	PAGE NO.
75225	59	82715	7	90681	43	94705	18, 53	97525	59		
75225B	59	82715B	7	90682	43	94707	18, 53	97526	59		
75230	59	82720	7	90702	55	95205B	60	97623	45		
75230B	59	82740B	7, 48	90703	55	95207B	60	97693	46		
75235B	59	84207B	30	91003	33	95210B	60	99105	6		
75240B	59	84210B	30	91003B	33	95212B	60	99107	6		
75400	34	84215B	30	91005B	33	95215B	60	99524	60		
75400BP	34	84220B	30	91007B	33	95220B	60	99526	60		
75401	34	84403B	28	91010	33	95225	60	HNF60R	94		
75401BP	34	84405B	28	91100	33	95225B	60				
75402	34	84410	28	91101	33	95230B	60				
75402BP	34	84805B	29	91102	33	95235B	60				
75403	34	84807B	29	91321	64	95240B	60				
75403BP	34	85103NB	38	91331	64	96073	82				
75404	34	85107NB	38	91332	64	96111	65				
75404BP	34	85703NB	33	91405	24	96112	65				
76205B	45	85803NB	32	91407	24	96113	65				
76207B	45	86205	44	91530	17, 40	96114	65				
76210B	45	86205B	44	91531	16, 32	96115	65				
76212B	45	86207	44	91532	16	96141	24				
76215B	45	86207B	44	91534	16, 51	96142	24				
76220B	45	86210B	44	91536	16, 51	96151	22				
76905B	46	86212B	44	91625	42	96152	22				
76907B	46	86215B	44	91627	42	96161	23				
76910B	46	86220B	44	91631	58	96162	23				
76912B	46	86225B	44	91632	58	96181	62				
76913B	81	86230B	44	91641	58	96182	62				
76915B	46	86240B	44	91695	43	96183	62				
76920B	46	86307B	42	91697	43	96184	62				
76923B	81	86525B	44	92105B	6	96185	62				
77602	74	86703B	29, 39	92110B	6	96186	62				
77604	74	86905	45	92115B	6	96193	61				
77910	74	86905B	45	92135B	6, 48	96194	61				
77920	74	86907	45	92191	72	96195	61				
79910B	84	86907B	45	92505B	15	96196	61				
82105B	10	86910B	45	92507B	15	96207B	42				
82110	10	86912B	45	92510	15	96212B	42				
82112	10	86915B	45	92510B	15	96215B	42				
82120	10	86925B	45	92512	15	96225B	42				
82305B	11	86930B	45	92515	15	96230B	42				
82307B	11	90271	19	92515B	15	96271	7				
82310	11	90281	19	92520	15	96312	78				
82310B	11	90282	19	92530	15	96361	51				
82312	11	90291	19	93591	90	96362	51				
82312B	11	90292	19	93592	90	96401	52				
82315	11	90362	42	94105	52	96402	52				
82315B	11	90371	17	94105B	52	96560	86				
82320	11	90372	17	94107	52	96831	63				
82320B	11	90401	55	94107B	52	96832	63				
82325	11, 50	90402	55	94110	52	96841	63				
82325B	11, 50	90440	28	94205B	53	96842	63				
82330B	11, 50	90451	29	94207B	53	96843	63				
82705B	7	90452	29	94405	18	96851	63				
82707B	7	90481	29	94407	18	96852	63				
82710	7	90513	37	94410	18	96920B	43				
82710B	7	90514	37	94505	18, 52	96925B	43				
82712	7	90661	39, 73	94507	18, 52	97451	46				
82712B	7	90662	39, 73	94510	18, 52	97452	46				

NOTES

A series of 20 horizontal gray bars, evenly spaced, intended for writing notes. The bars are uniform in length and height, providing a structured space for text entry.



101 Production Drive • Harrison, OH 45030
1-800-749-3261 • halexco.com

PRINTED IN THE USA

HALEX is a registered trademark of Halex/Scott Fetzer Company. Trade names and corporate references herein are for identification purposes only and are not intended for promotion purposes. All product or specification information is subject to change without notice. Copyright © 2023 Halex/Scott Fetzer. All Rights Reserved.